

Converting Colors

XYZ(46.0892, 43.0031, 42.4402)

Have a look what the booklet for
XYZ(46.0892, 43.0031, 42.4402)
contains.

XYZ(46.1623, 42.9657, 42.4194)	3
<i>Conversions</i>	4
<i>Details</i>	6
<i>Harmonies</i>	12
<i>Previews</i>	24
<i>Color Blindness Simulation</i>	28
<i>CSS Examples</i>	31

Color

**XYZ(46.1623, 42.9657,
42.4194)**

Conversions

Conversions Part 1

Format	Color
Hex	CFA5A7
RGB	207, 165, 167
RGB Percent	81%, 65%, 65%
CMY	0.1882, 0.3529, 0.3451
CMYK	0.00, 0.20, 0.19, 0.19
HSL	357°, 30%, 73%
HSV	357°, 20%, 81%
XYZ	46.1623, 42.9657, 42.4194
YIQ	177.7860, 24.3900, 9.5260

Conversions

Conversions Part 2

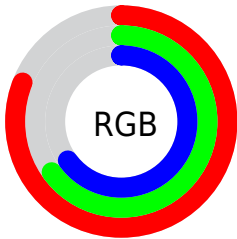
Format	Color
R _Y B	207, 165, 167
Decimal	13608359
CIE Lab	71.53, 15.73, 4.85
CIE LCh	72, 16.462, 17.118
Yxy	42.9657, 0.3509, 0.3266
Android (android.graphics.Color)	4291798439 (0xFFCFA5A7)
YUV	177.7860, -5.3175, 25.6207
Hunter-Lab	65.5482, 10.9991, 7.5144

Details

The XYZ color **46.1623, 42.9657, 42.4194** is a light color, and the websafe version is hex **CC9999**. A complement of this color would be **48.8510, 57.0338, 66.1943**, and the grayscale version is **42.2230, 44.4219, 48.3754**.

A 20% lighter version of the original color is **80.0180, 77.7203, 79.8914**, and **21.9485, 19.7235, 18.8699** is the 20% darker color. If you saturate the color by 10%, you get **41.0407, 35.4201, 32.3948**, and if you desaturate by 10%, it is **52.1685, 51.8350, 54.1108**.

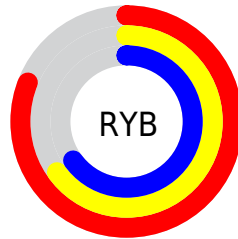
Distribution



Red (81%)

Green (65%)

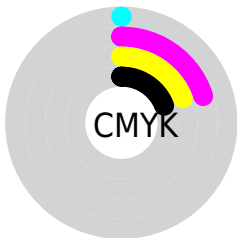
Blue (65%)



Red (81%)

Yellow (65%)

Blue (65%)

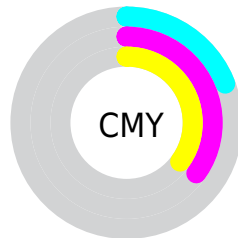


Cyan (0%)

Magenta (20%)

Yellow (19%)

Black (19%)



Cyan (19%)


Magenta (35%)


Yellow (35%)

Brightness & Saturation Gradients


These gradients show how the XYZ color 46.1623, 42.9657, 42.4194 changes by changing the brightness by 10 percent. The first figure shows a shift by +10% for each color and the second figure -10%.


Similar to the brightness gradients but the following saturation gradients show a change of the XYZ color 46.1623, 42.9657, 42.4194 by changing the saturation by 10% instead.


 46.1623, 42.9657,
42.4194


 46.1623, 42.9657,
42.4194


362.1658,
358.4707, 372.0694

 32.5791, 29.8582,
29.1018


 83.6882, 79.6591,
80.1109

 21.9619, 19.7310,
18.9116


 108.3616,
104.0138, 105.3219

 13.9453, 12.1996,
11.4303


137.4625,
132.8863, 135.3345

 8.1641, 6.8798,
6.2392

171.3561,
166.6611, 170.5671

 4.2528, 3.3870,
2.9200

210.4079,
205.7226, 211.4384

 1.8461, 1.3370,
1.0539

254.9832,

 0.5452, 0.1696,

250.4550, 258.3668

0.0000

305.4474,
301.2430, 311.7710

■ 0.0000, 0.0000,
0.0000

■ 46.1623, 42.9657,
42.4194

■ 46.1623, 42.9657,
42.4194

■ 41.0407, 35.4201,
32.3948

■ 52.1685, 51.8350,
54.1108

■ 36.7585, 29.1292,
23.9587

■ 59.0946, 62.0808,
67.5372

■ 33.2720, 24.0266,
17.0302

■ 66.9782, 73.7605,
82.7663

■ 30.5321, 20.0379,
11.5206

■ 75.8538, 86.9262,
99.8614

■ 28.4843, 17.0796,
7.3317

■ 79.5423, 92.0055,
108.1742

■ 27.0666, 15.0571,
4.3528

■ 26.2059, 13.8581,
2.4553

■ 25.7862, 13.2870,
1.4881

Harmonies

Analogous

The Analogous color harmony consists of three colors that are next to each other on the color wheel.



46.2734, 42.9657, 50.2791



46.1623, 42.9657, 42.4194



44.5843, 42.9657, 36.4372

Triad

The Triadic color harmony groups three colors that are evenly spaced from another and form a triangle on the color wheel.



46.1623, 42.9657, 42.4194



37.0446, 42.9657, 37.1188



39.6574, 42.9657, 63.3493

Complementary

The Complementary color scheme is a pair of colors which are on the opposite of each other on the color wheel.



46.1623, 42.9657, 42.4194



48.8510, 57.0338, 66.1943

Split Complementary

Split-complementary colors differ from the complementary color scheme. The scheme consists of three colors, the original color and two neighbors of the complement color.



37.3070, 42.9657, 58.9207



46.1623, 42.9657, 42.4194



35.8452, 42.9657, 43.4516

Square

The Square scheme is like the rectangle color scheme, but the four colors are evenly spaced on the color wheel.



46.1623, 42.9657, 42.4194



39.2843, 42.9657, 33.6237



35.9390, 42.9657, 51.4346



42.4313, 42.9657, 62.9915

Rectangle

The Rectangle color scheme consists of four colors that form a rectangle on the color wheel.



46.1623, 42.9657, 42.4194



42.9516, 42.9657, 34.0479



35.9390, 42.9657, 51.4346



38.7941, 42.9657, 62.3517

Sweetspot

The Sweet Spot groups the original color and five complimentary colors.



46.1635, 42.9677, 42.4203



88.1036, 89.7204, 95.4454



49.8681, 44.3822, 64.9701



18.7031, 18.9751, 20.1293



0.0000, 0.0000, 0.0000



20.3446, 21.4041, 23.3091

Same Dimension

The Same Dimension uses a secret algorithm to generate beautiful new colors.



46.1635, 42.9677, 42.4203



70.5320, 63.7725, 61.2404



49.6446, 50.2230, 42.6772



11.8312, 11.8172, 12.3869



16.2562, 8.3753, 0.9895



0.9171, 0.4716, 0.0984

Inverse Universe

The Inverse Universe completely reimagines the original color for something new.



46.1635, 42.9677, 42.4203



70.5320, 63.7725, 61.2404



44.7858, 48.5152, 66.0357



11.8312, 11.8172, 12.3869



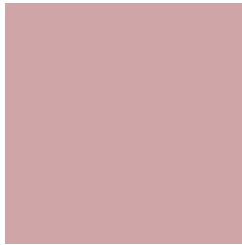
16.2562, 8.3753, 0.9895



0.9171, 0.4716, 0.0984

Previews

White Background



This preview shows how the XYZ color 46.1623, 42.9657, 42.4194 looks on a white background.

Color Contrast Check

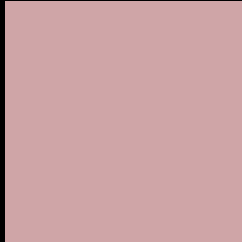
Large Text (above 18pt) WCAG AA × Fail

Any Text WCAG AA × Fail

Large Text (above 18pt) WCAG AAA × Fail

Any Text WCAG AAA × Fail

Black Background



This preview shows how the XYZ color 46.1623, 42.9657, 42.4194 looks on a black background.

Color Contrast Check

Large Text (above 18pt) WCAG AA ✓ Pass

Any Text WCAG AA ✓ Pass

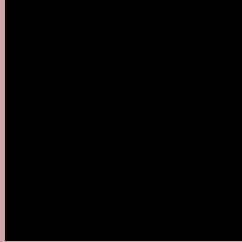
Large Text (above 18pt) WCAG AAA ✓ Pass

Any Text WCAG AAA ✓ Pass

If you want to check with other color combinations, try the [Color Contrast Checker](#).

XYZ 46.1623, 42.9657, 42.4194

Background



This preview shows how black text looks on a background with the XYZ color 46.1623, 42.9657, 42.4194.



This preview shows how white text looks on a background with the XYZ color 46.1623, 42.9657,

Color Blindness Simulation

Color vision deficiency is a very complex topic, and I could not describe the different causes any better than Wikipedia does, so if you want to learn more, you should check out their [article about color blindness](#).

Dichromacy



Original Color

46.1623, 42.9657, 42.4194

Protanopia

41.3668, 43.2222, 45.1922

Deuteranopia

43.8359, 42.8649, 42.0397



Tritanopia

47.1244, 43.0954, 46.9088

Trichromacy



Original Color

46.1623, 42.9657, 42.4194

Protanomaly

42.8049, 42.8469, 44.0444

Deuteranomaly

44.7050, 43.0378, 42.0273

Tritanomaly

46.8307, 42.9779, 45.3625

Monochromacy



Original Color

46.1623, 42.9657, 42.4194

Achromatopsia

42.3164, 44.5201, 48.4824

Achromatomaly

43.5698, 43.7619, 46.1949

CSS Examples

Text

The CSS property to change the color of the text to XYZ 46.1623, 42.9657, 42.4194 is called "color". The color property can be set on classes, ids or directly on the HTML element.

This example shows how text in the color `rgb(207, 165, 167)` looks like.

```
.text, #text, p{  
    color:rgb(207, 165, 167)  
}
```

If you want to add a text shadow in that color use the text-shadow property, you can generate a text shadow directly with our [CSS Text Shadow Generator](#).

Here you see how black text with a 4 pixel rgb(207, 165, 167) colored shadow looks like.

```
.shadow{ text-shadow: 4px 4px 2px rgb(207, 165, 167) }
```

Border

The CSS property to change the border of an element to XYZ 46.1623, 42.9657, 42.4194 is called "border". The border property can be set on classes, ids or directly on the HTML element.

This example shows the color as border, it can be applied via the CSS property "border" or "border-color".

```
.border, #border, table{ border:4px solid rgb(207, 165, 167) }
```


If only the border color should be changed use the property `border-color`.

```
.border{ border-color:rgb(207, 165, 167) }
```

If you want to add a box shadow in that color use:

Here you see how a box with a 4 pixel `rgb(207, 165, 167)` colored shadow looks like.

```
.boxshadow{ -moz-box-shadow:4px 4px 4px  
4px rgb(207, 165, 167); -webkit-box-  
shadow:4px 4px 4px 4px rgb(207, 165, 167);  
box-shadow:4px 4px 4px 4px rgb(207, 165,  
167) }
```

Background

The CSS property to change the background color of an element to XYZ 46.1623, 42.9657, 42.4194 is called "background". The background property can be set on classes, ids or directly on the HTML element.

```
.background, #background, body{  
background: rgb(207, 165, 167) }
```

If only the background color should be changed can be used:

```
.background{ background-color: rgb(207,  
165, 167) }
```

This example shows the color as background, it is applied via the CSS property "background".

To optimize and compress your CSS code, you can use our [online CSS compressor and optimizer](#) based on csstidy. If you want to create a linear or radial gradient as background or border, check our [CSS Gradient Generator](#).

Hey! You found this booklet interesting? Support Converting Colors with the new Membership Option!

The pro membership hides all ads, plus gives you double the colors in the color bucket, and more awesome pro features!

[Learn more, Memberships starting at \\$2.50/m!](#)

**Follow me
on Twitter!**

@ConvertingColor