

# Converting Colors

XYZ(46.0935, 43.5104, 42.1069)

Have a look what the booklet for  
XYZ(46.0935, 43.5104, 42.1069)  
contains.

<b>XYZ(46.1552, 43.5124, 42.0425)</b> .....	3
<b><i>Conversions</i></b> .....	4
<b><i>Details</i></b> .....	6
<b><i>Harmonies</i></b> .....	12
<b><i>Previews</i></b> .....	24
<b><i>Color Blindness Simulation</i></b> .....	28
<b><i>CSS Examples</i></b> .....	31

# Color

**XYZ(46.1552, 43.5124,  
42.0425)**

# Conversions

## Conversions Part 1

Format	Color
Hex	CEA7A6
RGB	206, 167, 166
RGB Percent	81%, 65%, 65%
CMY	0.1922, 0.3451, 0.3490
CMYK	0.00, 0.19, 0.19, 0.19
HSL	2°, 29%, 73%
HSV	2°, 19%, 81%
XYZ	46.1552, 43.5124, 42.0425
YIQ	178.5470, 23.5650, 7.9570

# Conversions

## Conversions Part 2

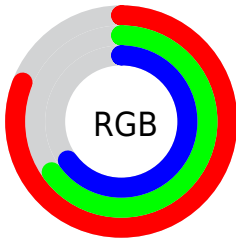
Format	Color
R <sub>Y</sub> B	206, 167, 166
Decimal	13543334
CIE Lab	71.90, 14.12, 5.92
CIE LCh	72, 15.309, 22.736
Yxy	43.5124, 0.3504, 0.3304
Android (android.graphics.Color)	4291733414 (0xFFCEA7A6)
YUV	178.5470, -6.1857, 24.0763
Hunter-Lab	65.9639, 9.4602, 8.3859

# Details

The XYZ color **46.1552, 43.5124, 42.0425** is a light color, and the websafe version is hex **CC9999**. A complement of this color would be **48.6973, 56.2243, 66.6785**, and the grayscale version is **42.6308, 44.8509, 48.8427**.

A 20% lighter version of the original color is **80.4124, 78.7230, 79.3635**, and **21.9305, 20.0557, 18.6349** is the 20% darker color. If you saturate the color by 10%, you get **41.0171, 36.0218, 31.7416**, and if you desaturate by 10%, it is **52.1697, 52.2707, 54.1298**.

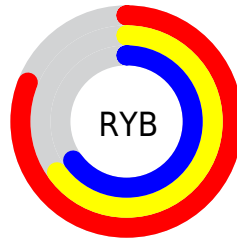
# Distribution



Red (81%)

Green (65%)

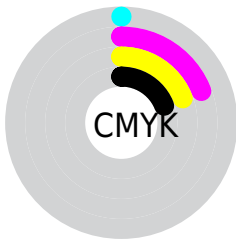
Blue (65%)



Red (81%)

Yellow (65%)

Blue (65%)

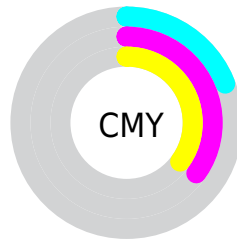


Cyan (0%)

Magenta (19%)

Yellow (19%)

Black (19%)



Cyan (19%)

Magenta (35%)


Yellow (35%)


# Brightness & Saturation Gradients

These gradients show how the XYZ color 46.1552, 43.5124, 42.0425 changes by changing the brightness by 10 percent. The first figure shows a shift by +10% for each color and the second figure -10%.

Similar to the brightness gradients but the following saturation gradients show a change of the XYZ color 46.1552, 43.5124, 42.0425 by changing the saturation by 10% instead.





 46.1552, 43.5124,  
42.0425


 46.1552, 43.5124,  
42.0425


362.1377,  
360.7148, 370.4639

 32.5735, 30.2874,  
28.8088


 83.6777, 80.4835,  
79.5347

 21.9575, 20.0568,  
18.6919


 108.3491,  
104.9984, 104.6303

 13.9421, 12.4363,  
11.2733


137.4478,  
134.0453, 134.5169

 8.1619, 7.0416,  
6.1345

171.3391,  
168.0087, 169.6130

 4.2514, 3.4881,  
2.8569

210.3884,  
207.2730, 210.3372

 1.8453, 1.3916,  
1.0220

254.9610,

 0.5447, 0.2105,

252.2225, 257.1081

0.0000

305.4224,  
303.2416, 310.3442

0.0000, 0.0000,  
0.0000

46.1552, 43.5124,  
42.0425

46.1552, 43.5124,  
42.0425

41.0171, 36.0218,  
31.7416

52.1697, 52.2707,  
54.1298

36.7113, 29.7346,  
23.1400

59.0951, 62.3454,  
68.0798

33.1949, 24.5900,  
16.1471

66.9684, 73.7896,  
83.9675

30.4201, 20.5193,  
10.6631

75.8233, 86.6521,  
101.8630

28.3338, 17.4465,  
6.5769

79.2637, 91.8619,  
108.1612

■ 26.8757, 15.2857,  
3.7622

■ 25.9755, 13.9367,  
2.0700

■ 25.5291, 13.2621,  
1.2488

■ 25.5098, 13.2341,  
1.2099

# Harmonies

## Analogous

The Analogous color harmony consists of three colors that are next to each other on the color wheel.



46.5321, 43.5124, 49.2161



46.1552, 43.5124, 42.0425



44.4674, 43.5124, 36.8453

# Triad

The Triadic color harmony groups three colors that are evenly spaced from another and form a triangle on the color wheel.



46.1552, 43.5124, 42.0425



37.4944, 43.5124, 39.2055



40.7266, 43.5124, 63.0942

# Complementary

The Complementary color scheme is a pair of colors which are on the opposite of each other on the color wheel.



46.1552, 43.5124, 42.0425



48.6973, 56.2243, 66.6785

# Split Complementary

Split-complementary colors differ from the complementary color scheme. The scheme consists of three colors, the original color and two neighbors of the complement color.



38.3955, 43.5124, 59.7470



46.1552, 43.5124, 42.0425



36.5810, 43.5124, 45.5855

# Square

The Square scheme is like the rectangle color scheme, but the four colors are evenly spaced on the color wheel.



46.1552, 43.5124, 42.0425



39.4498, 43.5124, 35.3315



36.9039, 43.5124, 53.1460



43.3252, 43.5124, 61.8910



# Rectangle

The Rectangle color scheme consists of four colors that form a rectangle on the color wheel.



46.1552, 43.5124, 42.0425



42.8629, 43.5124, 34.9473



36.9039, 43.5124, 53.1460



39.8873, 43.5124, 62.4530

# Sweetspot

The Sweet Spot groups the original color and five complimentary colors.



46.1564, 43.5144, 42.0434



88.1085, 89.9031, 94.9138



50.1499, 44.8187, 63.9767



18.7043, 19.0181, 20.0043



0.0000, 0.0000, 0.0000



20.3446, 21.4041, 23.3091



# Same Dimension

The Same Dimension uses a secret algorithm to generate beautiful new colors.



46.1564, 43.5144, 42.0434



71.3971, 65.5683, 61.3266



50.0366, 51.2748, 43.3368



11.2345, 11.2580, 11.6603



15.7187, 8.1703, 0.7486



0.8190, 0.4377, 0.0413

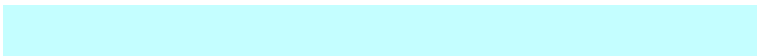


# Inverse Universe

The Inverse Universe completely reimagines the original color for something new.



48.6973, 56.2243, 66.6785



76.1983, 89.5872, 107.8837



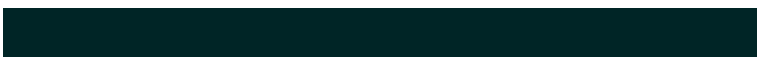
44.2857, 47.4013, 65.2080



11.5182, 12.6768, 14.4102



19.7083, 28.4405, 40.4071

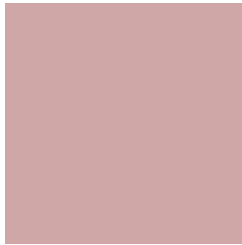


1.0245, 1.4828, 2.0872



# Previews

## White Background



This preview shows how the XYZ color 46.1552, 43.5124, 42.0425 looks on a white background.

## Color Contrast Check

Large Text (above 18pt) WCAG AA × Fail

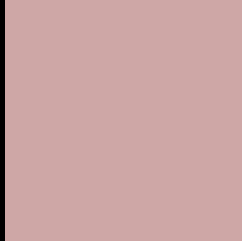
Any Text WCAG AA × Fail

Large Text (above 18pt) WCAG AAA × Fail

Any Text WCAG AAA × Fail



# Black Background



This preview shows how the XYZ color 46.1552, 43.5124, 42.0425 looks on a black background.

## Color Contrast Check

Large Text (above 18pt) WCAG AA ✓ Pass

Any Text WCAG AA ✓ Pass

Large Text (above 18pt) WCAG AAA ✓ Pass

Any Text WCAG AAA ✓ Pass

If you want to check with other color combinations, try the [Color Contrast Checker](#).

**XYZ 46.1552, 43.5124, 42.0425**

## **Background**



This preview shows how black text looks on a background with the XYZ color 46.1552, 43.5124, 42.0425.



This preview shows how white text looks on a background with the XYZ color 46.1552, 43.5124,



# Color Blindness Simulation

Color vision deficiency is a very complex topic, and I could not describe the different causes any better than Wikipedia does, so if you want to learn more, you should check out their [article about color blindness](#).

## Dichromacy



### Original Color

46.1552, 43.5124, 42.0425

### Protanopia

41.9321, 43.8147, 44.7751

### Deuteranopia

44.4550, 43.4718, 41.6452



## Tritanopia

47.2231, 43.3900, 48.0057

# Trichromacy



## Original Color

46.1552, 43.5124, 42.0425

## Protanomaly

43.3402, 43.6989, 43.6866

## Deuteranomaly

45.0669, 43.5101, 41.6203

## Tritanomaly

47.0083, 43.5938, 45.9812

# Monochromacy



## Original Color

46.1552, 43.5124, 42.0425

## Achromatopsia

42.8472, 45.0786, 49.0906

## Achromatomaly

43.9562, 44.5348, 46.3237

# CSS Examples

## Text

The CSS property to change the color of the text to XYZ 46.1552, 43.5124, 42.0425 is called "color". The color property can be set on classes, ids or directly on the HTML element.

This example shows how text in the color rgb(206, 167, 166) looks like.

```
.text, #text, p{  
    color:rgb(206, 167, 166)  
}
```

If you want to add a text shadow in that color use the text-shadow property, you can generate a text shadow directly with our [CSS Text Shadow Generator](#).

Here you see how black text with a 4 pixel rgb(206, 167, 166) colored shadow looks like.

```
.shadow{ text-shadow: 4px 4px 2px rgb(206, 167, 166) }
```

## Border

The CSS property to change the border of an element to XYZ 46.1552, 43.5124, 42.0425 is called "border". The border property can be set on classes, ids or directly on the HTML element.

This example shows the color as border, it can be applied via the CSS property "border" or "border-color".

```
.border, #border, table{ border:4px solid rgb(206, 167, 166) }
```



If only the border color should be changed use the property `border-color`.

```
.border{ border-color:rgb(206, 167, 166) }
```

If you want to add a box shadow in that color use:

Here you see how a box with a 4 pixel `rgb(206, 167, 166)` colored shadow looks like.

```
.boxshadow{ -moz-box-shadow:4px 4px 4px  
4px rgb(206, 167, 166); -webkit-box-  
shadow:4px 4px 4px 4px rgb(206, 167, 166);  
box-shadow:4px 4px 4px 4px rgb(206, 167,  
166) }
```

# Background

The CSS property to change the background color of an element to XYZ 46.1552, 43.5124, 42.0425 is called "background". The background property can be set on classes, ids or directly on the HTML element.

```
.background, #background, body{  
background: rgb(206, 167, 166) }
```

If only the background color should be changed can be used:

```
.background{ background-color: rgb(206,  
167, 166) }
```

This example shows the color as background, it is applied via the CSS property "background".

To optimize and compress your CSS code, you can use our [online CSS compressor and optimizer](#) based on csstidy. If you want to create a linear or radial gradient as background or border, check our [CSS Gradient Generator](#).

Hey! You found this booklet interesting? Support Converting Colors with the new Membership Option!

The pro membership hides all ads, plus gives you double the colors in the color bucket, and more awesome pro features!

**[Learn more, Memberships starting at \\$2.50/m!](#)**

**Follow me  
on Twitter!**

@ConvertingColor