

Converting Colors

XYZ(46.0988, 45.1318, 43.3274)

Have a look what the booklet for
XYZ(46.0988, 45.1318, 43.3274)
contains.

XYZ(46.0988, 45.1318, 43.3274)	3
<i>Conversions</i>	4
<i>Details</i>	6
<i>Harmonies</i>	12
<i>Previews</i>	24
<i>Color Blindness Simulation</i>	28
<i>CSS Examples</i>	31

Color

**XYZ(46.0988, 45.1318,
43.3274)**

Conversions

Conversions Part 1

Format	Color
Hex	C9ADA8
RGB	201, 173, 168
RGB Percent	79%, 68%, 66%
CMY	0.2118, 0.3215, 0.3412
CMYK	0.00, 0.14, 0.16, 0.21
HSL	9°, 23%, 72%
HSV	9°, 16%, 79%
XYZ	46.0988, 45.1318, 43.3274
YIQ	180.8020, 18.2930, 4.3810

Conversions

Conversions Part 2

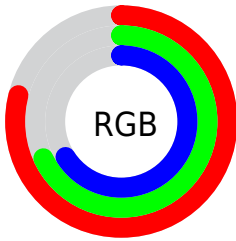
Format	Color
RYP	201, 174, 168
Decimal	13217192
CIELab	72.98, 9.32, 6.31
CIElCh	73, 11.249, 34.091
Yxy	45.1318, 0.3426, 0.3354
Android (android.graphics.Color)	4291407272 (0xFFC9ADA8)
YUV	180.8020, -6.3114, 17.7136
Hunter-Lab	67.1802, 4.9207, 8.7875

Details

The XYZ color **46.0988, 45.1318, 43.3274** is a light color, and the websafe version is hex **CC9999**. A complement of this color would be **46.4305, 52.0204, 62.8524**, and the grayscale version is **43.8411, 46.1243, 50.2293**.

A 20% lighter version of the original color is **82.3027, 82.0745, 81.3162**, and **22.0224, 21.1387, 19.4425** is the 20% darker color. If you saturate the color by 10%, you get **41.3055, 38.3137, 33.1942**, and if you desaturate by 10%, it is **51.6014, 52.9045, 55.1261**.

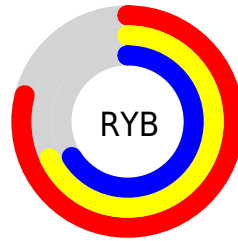
Distribution



Red (79%)

Green (68%)

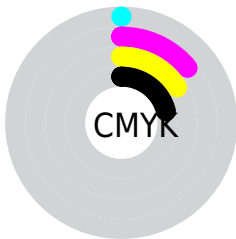
Blue (66%)



Red (79%)

Yellow (68%)

Blue (66%)

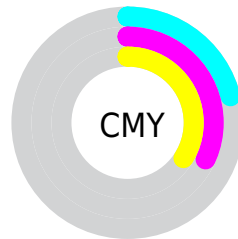


Cyan (0%)

Magenta (14%)

Yellow (16%)

Black (21%)



Cyan (21%)


Magenta (32%)

Yellow (34%)

Brightness & Saturation Gradients


These gradients show how the XYZ color 46.0988, 45.1318, 43.3274 changes by changing the brightness by 10 percent. The first figure shows a shift by +10% for each color and the second figure -10%.


Similar to the brightness gradients but the following saturation gradients show a change of the XYZ color 46.0988, 45.1318, 43.3274 by changing the saturation by 10% instead.


 46.0988, 45.1318,
43.3274


 46.0988, 45.1318,
43.3274


361.9150,
367.3071, 375.9172

 32.5287, 31.5613,
29.8088


 83.5938, 82.9182,
81.4963

 21.9232, 21.0266,
19.4427


 108.2495,
107.9028, 106.9837

 13.9168, 13.1434,
11.8105


137.3310,
137.4608, 137.2978

 8.1441, 7.5274,
6.4938

171.2039,
171.9768, 172.8571

 4.2399, 3.7941,
3.0740

210.2333,
211.8350, 214.0801

 1.8387, 1.5590,
1.1326

254.7848,

 0.5408, 0.3297,

257.4198, 261.3855

0.0000

305.2235,
309.1157, 315.1916

■ 0.0000, 0.0000,
0.0000

■ 46.0988, 45.1318,
43.3274

■ 46.0988, 45.1318,
43.3274

■ 41.3055, 38.3137,
33.1942

■ 51.6014, 52.9045,
55.1261

■ 37.1889, 32.4073,
24.6487

■ 57.8368, 61.6602,
68.6577

■ 33.7193, 27.3758,
17.6109

■ 64.8321, 71.4340,
83.9894

■ 30.8633, 23.1772,
11.9931

■ 72.6118, 82.2571,
101.1839

■ 28.5845, 19.7663,
7.6981

■ 77.8975, 91.1576,
108.0973

■ 26.8424, 17.0934,
4.6165

■ 25.5913, 15.1030,
2.6216

■ 24.7758, 13.7309,
1.5513

■ 24.5640, 13.3705,
1.2861

Harmonies

Analogous

The Analogous color harmony consists of three colors that are next to each other on the color wheel.



46.7725, 45.1318, 48.3737



46.0988, 45.1318, 43.3274



44.5669, 45.1318, 40.0447

Triad

The Triadic color harmony groups three colors that are evenly spaced from another and form a triangle on the color wheel.



46.0988, 45.1318, 43.3274



39.5901, 45.1318, 44.5673



43.1663, 45.1318, 60.7310

Complementary

The Complementary color scheme is a pair of colors which are on the opposite of each other on the color wheel.



46.0988, 45.1318, 43.3274



46.4305, 52.0204, 62.8524

Split Complementary

Split-complementary colors differ from the complementary color scheme. The scheme consists of three colors, the original color and two neighbors of the complement color.



41.2682, 45.1318, 59.5197



46.0988, 45.1318, 43.3274



39.2406, 45.1318, 49.9161

Square

The Square scheme is like the rectangle color scheme, but the four colors are evenly spaced on the color wheel.



46.0988, 45.1318, 43.3274



40.8154, 45.1318, 40.7213



39.8459, 45.1318, 55.4524



45.0470, 45.1318, 58.6476

Rectangle

The Rectangle color scheme consists of four colors that form a rectangle on the color wheel.



46.0988, 45.1318, 43.3274



43.2862, 45.1318, 39.1536



39.8459, 45.1318, 55.4524



42.5090, 45.1318, 60.6966

Sweetspot

The Sweet Spot groups the original color and five complimentary colors.



46.1000, 45.1338, 43.3283



89.7105, 92.4976, 97.3270



48.0599, 44.4111, 58.2939



19.0467, 19.5801, 20.4971



0.0000, 0.0000, 0.0000



20.3446, 21.4041, 23.3091

Same Dimension

The Same Dimension uses a secret algorithm to generate beautiful new colors.



46.1000, 45.1338, 43.3283



75.6159, 72.5734, 67.1494



49.4502, 51.8342, 44.4451



10.7615, 10.8922, 11.0980



15.4875, 8.4921, 0.8229



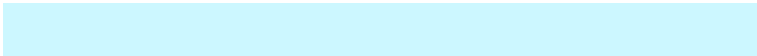
0.7759, 0.4872, 0.0531

Inverse Universe

The Inverse Universe completely reimagines the original color for something new.



46.4305, 52.0204, 62.8524



76.2942, 86.7421, 107.3295



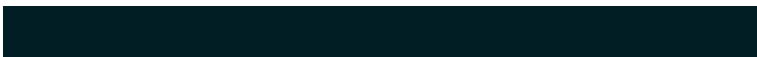
42.9221, 45.0035, 61.6829



10.8044, 11.7829, 13.6224



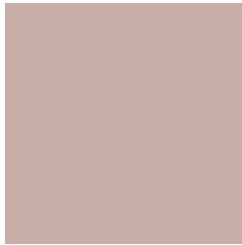
15.7825, 20.9589, 37.9580



0.7854, 1.0687, 1.8100

Previews

White Background



This preview shows how the XYZ color 46.0988, 45.1318, 43.3274 looks on a white background.

Color Contrast Check

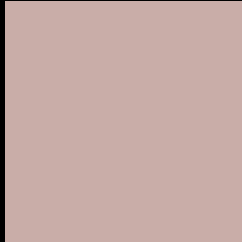
Large Text (above 18pt) WCAG AA × Fail

Any Text WCAG AA × Fail

Large Text (above 18pt) WCAG AAA × Fail

Any Text WCAG AAA × Fail

Black Background



This preview shows how the XYZ color 46.0988, 45.1318, 43.3274 looks on a black background.

Color Contrast Check

Large Text (above 18pt) WCAG AA ✓ Pass

Any Text WCAG AA ✓ Pass

Large Text (above 18pt) WCAG AAA ✓ Pass

Any Text WCAG AAA ✓ Pass

If you want to check with other color combinations, try the [Color Contrast Checker](#).

XYZ 46.0988, 45.1318, 43.3274

Background



This preview shows how black text looks on a background with the XYZ color 46.0988, 45.1318, 43.3274.



This preview shows how white text looks on a background with the XYZ color 46.0988, 45.1318,

43.3274.

Color Blindness Simulation

Color vision deficiency is a very complex topic, and I could not describe the different causes any better than Wikipedia does, so if you want to learn more, you should check out their [article about color blindness](#).

Dichromacy



Original Color

46.0988, 45.1318, 43.3274

Protanopia

43.2379, 45.3708, 45.0066

Deuteranopia

46.0988, 45.1318, 43.3274



Tritanopia

47.8432, 45.2830, 51.5663

Trichromacy



Original Color

46.0988, 45.1318, 43.3274

Protanomaly

44.2130, 45.2937, 44.4425

Deuteranomaly

46.0988, 45.1318, 43.3274

Tritanomaly

47.1455, 45.2760, 48.3738

Monochromacy



Original Color

46.0988, 45.1318, 43.3274

Achromatopsia

43.9204, 46.2077, 50.3202

Achromatomaly

44.4959, 45.6667, 47.5437

CSS Examples

Text

The CSS property to change the color of the text to XYZ 46.0988, 45.1318, 43.3274 is called "color". The color property can be set on classes, ids or directly on the HTML element.

This example shows how text in the color `rgb(201, 173, 168)` looks like.

```
.text, #text, p{  
    color:rgb(201, 173, 168)  
}
```

If you want to add a text shadow in that color use the text-shadow property, you can generate a text shadow directly with our [CSS Text Shadow Generator](#).

Here you see how black text with a 4 pixel rgb(201, 173, 168) colored shadow looks like.

```
.shadow{ text-shadow: 4px 4px 2px rgb(201, 173, 168) }
```

Border

The CSS property to change the border of an element to XYZ 46.0988, 45.1318, 43.3274 is called "border". The border property can be set on classes, ids or directly on the HTML element.

This example shows the color as border, it can be applied via the CSS property "border" or "border-color".

```
.border, #border, table{ border:4px solid rgb(201, 173, 168) }
```


If only the border color should be changed use the property `border-color`.

```
.border{ border-color:rgb(201, 173, 168) }
```

If you want to add a box shadow in that color use:

Here you see how a box with a 4 pixel `rgb(201, 173, 168)` colored shadow looks like.

```
.boxshadow{ -moz-box-shadow:4px 4px 4px  
4px rgb(201, 173, 168); -webkit-box-  
shadow:4px 4px 4px 4px rgb(201, 173, 168);  
box-shadow:4px 4px 4px 4px rgb(201, 173,  
168) }
```

Background

The CSS property to change the background color of an element to XYZ 46.0988, 45.1318, 43.3274 is called "background". The background property can be set on classes, ids or directly on the HTML element.

```
.background, #background, body{  
background: rgb(201, 173, 168) }
```

If only the background color should be changed can be used:

```
.background{ background-color: rgb(201,  
173, 168) }
```

This example shows the color as background, it is applied via the CSS property "background".

To optimize and compress your CSS code, you can use our [online CSS compressor and optimizer](#) based on csstidy. If you want to create a linear or radial gradient as background or border, check our [CSS Gradient Generator](#).

Hey! You found this booklet interesting? Support Converting Colors with the new Membership Option!

The pro membership hides all ads, plus gives you double the colors in the color bucket, and more awesome pro features!

[Learn more, Memberships starting at \\$2.50/m!](#)

**Follow me
on Twitter!**

@ConvertingColor