

Converting Colors

XYZ(46.1102, 45.3603, 46.4011)

Have a look what the booklet for
XYZ(46.1102, 45.3603, 46.4011)
contains.

XYZ(46.0647, 45.3339, 46.3668)	3
<i>Conversions</i>	4
<i>Details</i>	6
<i>Harmonies</i>	12
<i>Previews</i>	24
<i>Color Blindness Simulation</i>	28
<i>CSS Examples</i>	31

Color

**XYZ(46.0647, 45.3339,
46.3668)**

Conversions

Conversions Part 1

Format	Color
Hex	C6AEAE
RGB	198, 174, 174
RGB Percent	78%, 68%, 68%
CMY	0.2235, 0.3176, 0.3176
CMYK	0.00, 0.12, 0.12, 0.22
HSL	0°, 17%, 73%
HSV	0°, 12%, 78%
XYZ	46.0647, 45.3339, 46.3668
YIQ	181.1760, 14.3040, 5.0880

Conversions

Conversions Part 2

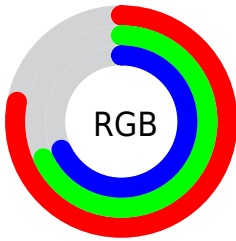
Format	Color
RYB	198, 174, 174
Decimal	13020846
CIELab	73.11, 8.65, 3.17
CIELCh	73, 9.211, 20.141
Yxy	45.3339, 0.3344, 0.3291
Android (android.graphics.Color)	4291210926 (0xFFC6AEAE)
YUV	181.1760, -3.5378, 14.7546
Hunter-Lab	67.3305, 4.2940, 6.3015

Details

The XYZ color **46.0647, 45.3339, 46.3668** is a light color, and the websafe version is hex **CC9999**. A complement of this color would be **47.8423, 53.4627, 61.2242**, and the grayscale version is **44.0303, 46.3234, 50.4461**.

A 20% lighter version of the original color is **83.4022, 82.9558, 85.7450**, and **21.9740, 21.2535, 21.3565** is the 20% darker color. If you saturate the color by 10%, you get **40.7283, 37.5256, 35.7563**, and if you desaturate by 10%, it is **52.2519, 54.3874, 58.6658**.

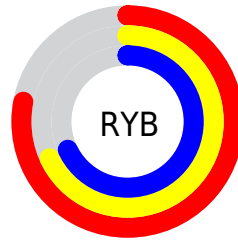
Distribution



Red (78%)

Green (68%)

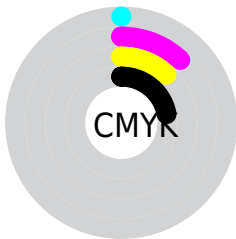
Blue (68%)



Red (78%)

Yellow (68%)

Blue (68%)

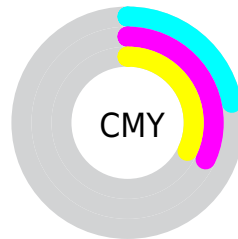


Cyan (0%)

Magenta (12%)

Yellow (12%)

Black (22%)



Cyan (22%)


Magenta (32%)


Yellow (32%)

Brightness & Saturation Gradients

These gradients show how the XYZ color 46.0647, 45.3339, 46.3668 changes by changing the brightness by 10 percent. The first figure shows a shift by +10% for each color and the second figure -10%.


Similar to the brightness gradients but the following saturation gradients show a change of the XYZ color 46.0647, 45.3339, 46.3668 by changing the saturation by 10% instead.


 46.0647, 45.3339,
46.3668

 46.0647, 45.3339,
46.3668


361.7803,
368.1242, 388.6017

 32.5017, 31.7205,
32.1846


 83.5431, 83.2212,
86.1077

 21.9024, 21.1481,
21.2366


108.1892,
108.2640, 112.5036

 13.9014, 13.2323,
13.1041


137.2604,
137.8853, 143.8077

 8.1334, 7.5887,
7.3687

171.1221,
172.4696, 180.4387

 4.2329, 3.8329,
3.6118

210.1395,
212.4012, 222.8150

 1.8347, 1.5805,
1.4149

254.6782,

 0.5385, 0.3444,

258.0646, 271.3553

0.1533

305.1033,
309.8441, 326.4780

■ 0.0000, 0.0000,
0.0000

■ 46.0647, 45.3339,
46.3668

■ 46.0647, 45.3339,
46.3668

■ 40.7283, 37.5256,
35.7563

■ 52.2519, 54.3874,
58.6658

■ 36.2020, 30.9024,
26.7579

■ 59.3207, 64.7308,
72.7194

■ 32.4473, 25.4082,
19.2936

■ 67.3053, 76.4141,
88.5938

■ 29.4211, 20.9800,
13.2780

■ 76.2367, 89.4828,
106.3506

■ 27.0763, 17.5488,
8.6169

■ 77.0989, 90.7458,
108.0599

■ 25.3601, 15.0373,
5.2056

■ 24.2119, 13.3569,
2.9235

■ 23.5593, 12.4018,
1.6268

■ 23.2892, 12.0065,
1.0900

Harmonies

Analogous

The Analogous color harmony consists of three colors that are next to each other on the color wheel.



46.2152, 45.3339, 50.8966



46.0647, 45.3339, 46.3668



45.1058, 45.3339, 42.8552

Triad

The Triadic color harmony groups three colors that are evenly spaced from another and form a triangle on the color wheel.



46.0647, 45.3339, 46.3668



40.7526, 45.3339, 43.8872



42.5599, 45.3339, 58.6340

Complementary

The Complementary color scheme is a pair of colors which are on the opposite of each other on the color wheel.



46.0647, 45.3339, 46.3668



47.8423, 53.4627, 61.2242

Split Complementary

Split-complementary colors differ from the complementary color scheme. The scheme consists of three colors, the original color and two neighbors of the complement color.



41.1323, 45.3339, 56.4938



46.0647, 45.3339, 46.3668



40.1061, 45.3339, 47.8564

Square

The Square scheme is like the rectangle color scheme, but the four colors are evenly spaced on the color wheel.



46.0647, 45.3339, 46.3668



42.0300, 45.3339, 41.4867



40.2434, 45.3339, 52.4812



44.1647, 45.3339, 58.1733

Rectangle

The Rectangle color scheme consists of four colors that form a rectangle on the color wheel.



46.0647, 45.3339, 46.3668



44.1501, 45.3339, 41.4734



40.2434, 45.3339, 52.4812



42.0441, 45.3339, 58.1900

Sweetspot

The Sweet Spot groups the original color and five complimentary colors.



46.0660, 45.3359, 46.3678



90.2833, 93.0252, 99.4234



48.6182, 46.3556, 59.8115



19.1386, 19.6395, 20.9115



0.0000, 0.0000, 0.0000



20.3446, 21.4041, 23.3091

Same Dimension

The Same Dimension uses a secret algorithm to generate beautiful new colors.



46.0660, 45.3359, 46.3678



78.4819, 75.7568, 75.9614



48.4880, 50.1801, 47.1751



10.6340, 10.6372, 11.0555



15.1455, 7.8082, 0.7089



0.7172, 0.3698, 0.0336

Inverse Universe

The Inverse Universe completely reimagines the original color for something new.



47.8423, 53.4627, 61.2242



82.3491, 93.4495, 108.3050



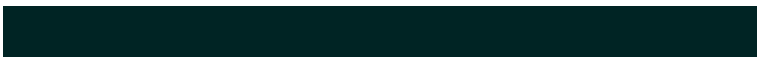
45.2080, 48.1942, 60.3461



10.9466, 12.0673, 13.6698



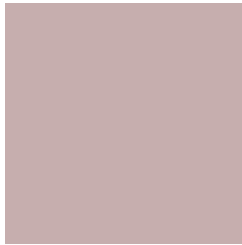
19.7569, 28.9077, 39.2828



0.9355, 1.3689, 1.8601

Previews

White Background



This preview shows how the XYZ color 46.0647, 45.3339, 46.3668 looks on a white background.

Color Contrast Check

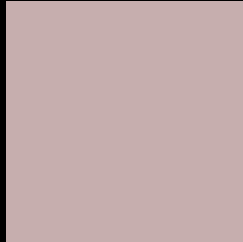
Large Text (above 18pt) WCAG AA × Fail

Any Text WCAG AA × Fail

Large Text (above 18pt) WCAG AAA × Fail

Any Text WCAG AAA × Fail

Black Background



This preview shows how the XYZ color 46.0647, 45.3339, 46.3668 looks on a black background.

Color Contrast Check

Large Text (above 18pt) WCAG AA ✓ Pass

Any Text WCAG AA ✓ Pass

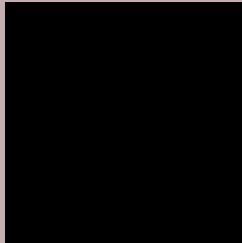
Large Text (above 18pt) WCAG AAA ✓ Pass

Any Text WCAG AAA ✓ Pass

If you want to check with other color combinations, try the [Color Contrast Checker](#).

XYZ 46.0647, 45.3339, 46.3668

Background



This preview shows how black text looks on a background with the XYZ color 46.0647, 45.3339, 46.3668.



This preview shows how white text looks on a background with the XYZ color 46.0647, 45.3339,

Color Blindness Simulation

Color vision deficiency is a very complex topic, and I could not describe the different causes any better than Wikipedia does, so if you want to learn more, you should check out their [article about color blindness](#).

Dichromacy



Original Color

46.0647, 45.3339, 46.3668

Protanopia

43.5844, 45.4818, 48.0767

Deuteranopia

46.3292, 45.4702, 46.3792



Tritanopia

47.4349, 45.3296, 52.7038

Trichromacy



Original Color

46.0647, 45.3339, 46.3668

Protanomaly

44.2977, 45.2702, 47.4776

Deuteranomaly

46.3292, 45.4702, 46.3792

Tritanomaly

46.9403, 45.4067, 50.5463

Monochromacy



Original Color

46.0647, 45.3339, 46.3668

Achromatopsia

43.9204, 46.2077, 50.3202

Achromatomaly

44.4498, 45.6199, 48.5823

CSS Examples

Text

The CSS property to change the color of the text to XYZ 46.0647, 45.3339, 46.3668 is called "color". The color property can be set on classes, ids or directly on the HTML element.

This example shows how text in the color `rgb(198, 174, 174)` looks like.

```
.text, #text, p{  
    color:rgb(198, 174, 174)  
}
```

If you want to add a text shadow in that color use the text-shadow property, you can generate a text shadow directly with our [CSS Text Shadow Generator](#).

Here you see how black text with a 4 pixel rgb(198, 174, 174) colored shadow looks like.

```
.shadow{ text-shadow: 4px 4px 2px rgb(198, 174, 174) }
```

Border

The CSS property to change the border of an element to XYZ 46.0647, 45.3339, 46.3668 is called "border". The border property can be set on classes, ids or directly on the HTML element.

This example shows the color as border, it can be applied via the CSS property "border" or "border-color".

```
.border, #border, table{ border:4px solid rgb(198, 174, 174) }
```


If only the border color should be changed use the property `border-color`.

```
.border{ border-color:rgb(198, 174, 174) }
```

If you want to add a box shadow in that color use:

Here you see how a box with a 4 pixel `rgb(198, 174, 174)` colored shadow looks like.

```
.boxshadow{ -moz-box-shadow:4px 4px 4px  
4px rgb(198, 174, 174); -webkit-box-  
shadow:4px 4px 4px 4px rgb(198, 174, 174);  
box-shadow:4px 4px 4px 4px rgb(198, 174,  
174) }
```

Background

The CSS property to change the background color of an element to XYZ 46.0647, 45.3339, 46.3668 is called "background". The background property can be set on classes, ids or directly on the HTML element.

```
.background, #background, body{  
background: rgb(198, 174, 174) }
```

If only the background color should be changed can be used:

```
.background{ background-color: rgb(198,  
174, 174) }
```

This example shows the color as background, it is applied via the CSS property "background".

To optimize and compress your CSS code, you can use our [online CSS compressor and optimizer](#) based on csstidy. If you want to create a linear or radial gradient as background or border, check our [CSS Gradient Generator](#).

Hey! You found this booklet interesting? Support Converting Colors with the new Membership Option!

The pro membership hides all ads, plus gives you double the colors in the color bucket, and more awesome pro features!

[Learn more, Memberships starting at \\$2.50/m!](#)

**Follow me
on Twitter!**

@ConvertingColor