

Converting Colors

XYZ(46.3090, 45.7850, 48.2507)

Have a look what the booklet for
XYZ(46.3090, 45.7850, 48.2507)
contains.

XYZ(46.2917, 45.7046, 47.9770)	3
<i>Conversions</i>	4
<i>Details</i>	6
<i>Harmonies</i>	12
<i>Previews</i>	24
<i>Color Blindness Simulation</i>	28
<i>CSS Examples</i>	31

Color

**XYZ(46.2917, 45.7046,
47.9770)**

Conversions

Conversions Part 1

Format	Color
Hex	C5AFB1
RGB	197, 175, 177
RGB Percent	77%, 69%, 69%
CMY	0.2274, 0.3137, 0.3059
CMYK	0.00, 0.11, 0.10, 0.23
HSL	355°, 16%, 73%
HSV	355°, 11%, 77%
XYZ	46.2917, 45.7046, 47.9770
YIQ	181.8060, 12.4700, 5.2860

Conversions

Conversions Part 2

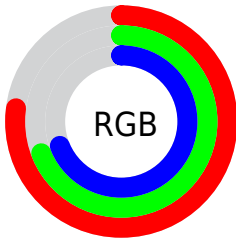
Format	Color
RYB	197, 175, 177
Decimal	12955569
CIELab	73.35, 8.25, 1.87
CIELCh	73, 8.456, 12.756
Yxy	45.7046, 0.3307, 0.3265
Android (android.graphics.Color)	4291145649 (0xFFC5AFB1)
YUV	181.8060, -2.3694, 13.3251
Hunter-Lab	67.6052, 3.9163, 5.2476

Details

The XYZ color **46.2917, 45.7046, 47.9770** is a light color, and the websafe version is hex **CCCCCC**. A complement of this color would be **47.4975, 52.9876, 59.3565**, and the grayscale version is **44.3667, 46.6772, 50.8315**.

A 20% lighter version of the original color is **84.1569, 84.1059, 88.8893**, and **22.0487, 21.4608, 22.0490** is the 20% darker color. If you saturate the color by 10%, you get **41.0640, 37.9210, 37.9966**, and if you desaturate by 10%, it is **52.3157, 54.7047, 59.3801**.

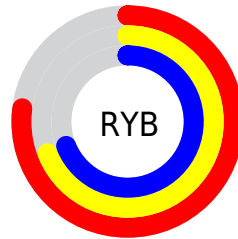
Distribution



Red (77%)

Green (69%)

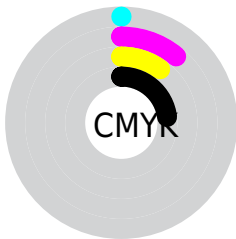
Blue (69%)



Red (77%)

Yellow (69%)

Blue (69%)

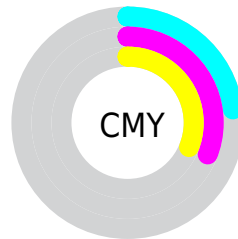


Cyan (0%)

Magenta (11%)

Yellow (10%)

Black (23%)



Cyan (23%)

Magenta (31%)

Yellow (31%)

Brightness & Saturation Gradients

These gradients show how the XYZ color 46.2917, 45.7046, 47.9770 changes by changing the brightness by 10 percent. The first figure shows a shift by +10% for each color and the second figure -10%.

Similar to the brightness gradients but the following saturation gradients show a change of the XYZ color 46.2917, 45.7046, 47.9770 by changing the saturation by 10% instead.

■ 46.2917, 45.7046,
47.9770

■ 46.2917, 45.7046,
47.9770

362.6765,
369.6198, 395.2070

■ 32.6817, 32.0128,
33.4488

■ 83.8806, 83.7767,
88.5354

■ 22.0408, 21.3713,
22.1966

108.5901,
108.9258, 115.4026

■ 14.0036, 13.3956,
13.8017

137.7302,
138.6628, 147.2199

■ 8.2049, 7.7016,
7.8457

171.6662,
173.3721, 184.4059

■ 4.2792, 3.9046,
3.9100

210.7635,
213.4380, 227.3791

■ 1.8613, 1.6203,
1.5761

255.3874,

■ 0.5542, 0.3712,

259.2450, 276.5580

0.2737

305.9033,
311.1775, 332.3611

■ 0.0000, 0.0000,
0.0000

■ 46.2917, 45.7046,
47.9770

■ 46.2917, 45.7046,
47.9770

■ 41.0640, 37.9210,
37.9966

■ 52.3157, 54.7047,
59.3801

■ 36.5956, 31.2960,
29.3804

■ 59.1634, 64.9640,
72.2557

■ 32.8523, 25.7759,
22.0697

■ 66.8656, 76.5306,
86.6547

■ 29.7957, 21.3007,
16.0010

■ 75.4504, 89.4481,
102.6247

■ 27.3838, 17.8044,
11.1049

■ 76.8361, 90.6104,
108.0476

■ 25.5703, 15.2136,
7.3055

■ 24.3022, 13.4445,
4.5179

■ 23.5174, 12.3978,
2.6446

■ 23.1343, 11.9137,
1.6474

Harmonies

Analogous

The Analogous color harmony consists of three colors that are next to each other on the color wheel.



46.2312, 45.7046, 52.2334



46.2917, 45.7046, 47.9770



45.5758, 45.7046, 44.4062

Triad

The Triadic color harmony groups three colors that are evenly spaced from another and form a triangle on the color wheel.



46.2917, 45.7046, 47.9770



41.5272, 45.7046, 43.9870



42.5982, 45.7046, 58.0082

Complementary

The Complementary color scheme is a pair of colors which are on the opposite of each other on the color wheel.



46.2917, 45.7046, 47.9770



47.4975, 52.9876, 59.3565

Split Complementary

Split-complementary colors differ from the complementary color scheme. The scheme consists of three colors, the original color and two neighbors of the complement color.



41.3736, 45.7046, 55.5375



46.2917, 45.7046, 47.9770



40.7651, 45.7046, 47.3747

Square

The Square scheme is like the rectangle color scheme, but the four colors are evenly spaced on the color wheel.



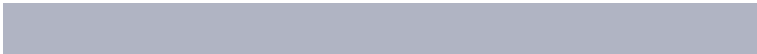
46.2917, 45.7046, 47.9770



42.8121, 45.7046, 42.1925



40.7095, 45.7046, 51.5959



44.0757, 45.7046, 58.1923

Rectangle

The Rectangle color scheme consists of four colors that form a rectangle on the color wheel.



46.2917, 45.7046, 47.9770



44.7639, 45.7046, 42.8288



40.7095, 45.7046, 51.5959



42.1441, 45.7046, 57.4113

Sweetspot

The Sweet Spot groups the original color and five complimentary colors.



46.2930, 45.7066, 47.9780



91.5581, 94.7759, 102.3109



47.8633, 46.2687, 59.2318



19.4024, 19.9946, 21.5307



0.0000, 0.0000, 0.0000



20.3446, 21.4041, 23.3091

Same Dimension

The Same Dimension uses a secret algorithm to generate beautiful new colors.



46.2930, 45.7066, 47.9780



80.8928, 78.8514, 82.0895



47.8641, 49.1650, 47.5270



10.6723, 10.6523, 11.2577



15.2301, 7.8416, 1.1558



0.7349, 0.3768, 0.1270

Inverse Universe

The Inverse Universe completely reimagines the original color for something new.



46.2930, 45.7066, 47.9780



80.8928, 78.8514, 82.0895



45.7849, 49.1987, 59.9069



10.6723, 10.6523, 11.2577



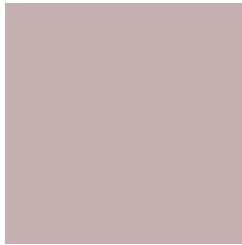
15.2301, 7.8416, 1.1558



0.7349, 0.3768, 0.1270

Previews

White Background



This preview shows how the XYZ color 46.2917, 45.7046, 47.9770 looks on a white background.

Color Contrast Check

Large Text (above 18pt) WCAG AA × Fail

Any Text WCAG AA × Fail

Large Text (above 18pt) WCAG AAA × Fail

Any Text WCAG AAA × Fail

Black Background



This preview shows how the XYZ color 46.2917, 45.7046, 47.9770 looks on a black background.

Color Contrast Check

Large Text (above 18pt) WCAG AA ✓ Pass

Any Text WCAG AA ✓ Pass

Large Text (above 18pt) WCAG AAA ✓ Pass

Any Text WCAG AAA ✓ Pass

If you want to check with other color combinations, try the [Color Contrast Checker](#).

XYZ 46.2917, 45.7046, 47.9770

Background



This preview shows how black text looks on a background with the XYZ color 46.2917, 45.7046, 47.9770.



This preview shows how white text looks on a background with the XYZ color 46.2917, 45.7046,

47.9770.

Color Blindness Simulation

Color vision deficiency is a very complex topic, and I could not describe the different causes any better than Wikipedia does, so if you want to learn more, you should check out their [article about color blindness](#).

Dichromacy



Original Color

46.2917, 45.7046, 47.9770

Protanopia

43.7852, 45.5622, 49.1345

Deuteranopia

46.6251, 45.5885, 47.9370



Tritanopia

47.2019, 45.4808, 53.3046

Trichromacy



Original Color

46.2917, 45.7046, 47.9770

Protanomaly

44.6953, 45.7465, 48.5937

Deuteranomaly

46.3606, 45.4522, 47.9247

Tritanomaly

46.9720, 45.6968, 51.1444

Monochromacy



Original Color

46.2917, 45.7046, 47.9770

Achromatopsia

44.4628, 46.7784, 50.9417

Achromatomaly

44.8518, 46.1003, 49.7143

CSS Examples

Text

The CSS property to change the color of the text to XYZ 46.2917, 45.7046, 47.9770 is called "color". The color property can be set on classes, ids or directly on the HTML element.

This example shows how text in the color `rgb(197, 175, 177)` looks like.

```
.text, #text, p{  
    color:rgb(197, 175, 177)  
}
```

If you want to add a text shadow in that color use the text-shadow property, you can generate a text shadow directly with our [CSS Text Shadow Generator](#).

Here you see how black text with a 4 pixel rgb(197, 175, 177) colored shadow looks like.

```
.shadow{ text-shadow: 4px 4px 2px rgb(197, 175, 177) }
```

Border

The CSS property to change the border of an element to XYZ 46.2917, 45.7046, 47.9770 is called "border". The border property can be set on classes, ids or directly on the HTML element.

This example shows the color as border, it can be applied via the CSS property "border" or "border-color".

```
.border, #border, table{ border:4px solid rgb(197, 175, 177) }
```


If only the border color should be changed use the property border-color.

```
.border{ border-color:rgb(197, 175, 177) }
```

If you want to add a box shadow in that color use:

Here you see how a box with a 4 pixel rgb(197, 175, 177) colored shadow looks like.

```
.boxshadow{ -moz-box-shadow:4px 4px 4px  
4px rgb(197, 175, 177); -webkit-box-  
shadow:4px 4px 4px 4px rgb(197, 175, 177);  
box-shadow:4px 4px 4px 4px rgb(197, 175,  
177) }
```

Background

The CSS property to change the background color of an element to XYZ 46.2917, 45.7046, 47.9770 is called "background". The background property can be set on classes, ids or directly on the HTML element.

```
.background, #background, body{  
background: rgb(197, 175, 177) }
```

If only the background color should be changed can be used:

```
.background{ background-color: rgb(197,  
175, 177) }
```

This example shows the color as background, it is applied via the CSS property "background".

To optimize and compress your CSS code, you can use our [online CSS compressor and optimizer](#) based on csstidy. If you want to create a linear or radial gradient as background or border, check our [CSS Gradient Generator](#).

Hey! You found this booklet interesting? Support Converting Colors with the new Membership Option!

The pro membership hides all ads, plus gives you double the colors in the color bucket, and more awesome pro features!

[Learn more, Memberships starting at \\$2.50/m!](#)

**Follow me
on Twitter!**

@ConvertingColor