

Converting Colors

XYZ(46.3345, 43.8303, 41.5438)

Have a look what the booklet for
XYZ(46.3345, 43.8303, 41.5438)
contains.

XYZ(46.5263, 43.9873, 41.6355)	3
<i>Conversions</i>	4
<i>Details</i>	6
<i>Harmonies</i>	12
<i>Previews</i>	24
<i>Color Blindness Simulation</i>	28
<i>CSS Examples</i>	31

Color

**XYZ(46.5263, 43.9873,
41.6355)**

Conversions

Conversions Part 1

Format	Color
Hex	CFA8A5
RGB	207, 168, 165
RGB Percent	81%, 66%, 65%
CMY	0.1882, 0.3412, 0.3529
CMYK	0.00, 0.19, 0.20, 0.19
HSL	4°, 30%, 73%
HSV	4°, 20%, 81%
XYZ	46.5263, 43.9873, 41.6355
YIQ	179.3190, 24.2070, 7.3350

Conversions

Conversions Part 2

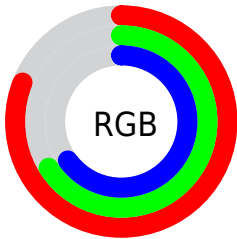
Format	Color
R _Y B	207, 168, 165
Decimal	13609125
CIE Lab	72.22, 13.80, 6.94
CIE LCh	72, 15.442, 26.696
Yxy	43.9873, 0.3521, 0.3329
Android (android.graphics.Color)	4291799205 (0xFFCFA8A5)
YUV	179.3190, -7.0593, 24.2762
Hunter-Lab	66.3229, 9.1547, 9.2056

Details

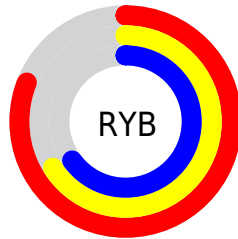
The XYZ color **46.5263, 43.9873, 41.6355** is a light color, and the websafe version is hex **CC9999**. A complement of this color would be **48.3719, 55.6886, 67.2313**, and the grayscale version is **43.0464, 45.2881, 49.3188**.

A 20% lighter version of the original color is **80.5459, 79.2027, 78.7526**, and **22.1749, 20.3584, 18.3836** is the 20% darker color. If you saturate the color by 10%, you get **41.5029, 36.7154, 31.4058**, and if you desaturate by 10%, it is **52.3815, 52.4340, 53.6480**.

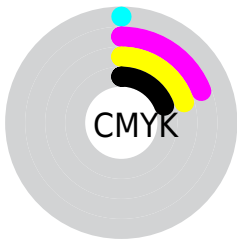
Distribution



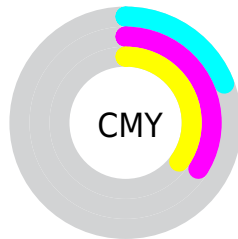
- Red (81%)
- Green (66%)
- Blue (65%)



- Red (81%)
- Yellow (66%)
- Blue (65%)



- Cyan (0%)
- Magenta (19%)
- Yellow (20%)
- Black (19%)





- Cyan (19%)
- Magenta (34%)
- Yellow (35%)

Brightness & Saturation Gradients


These gradients show how the XYZ color 46.5263, 43.9873, 41.6355 changes by changing the brightness by 10 percent. The first figure shows a shift by +10% for each color and the second figure -10%.


Similar to the brightness gradients but the following saturation gradients show a change of the XYZ color 46.5263, 43.9873, 41.6355 by changing the saturation by 10% instead.


 46.5263, 43.9873,
41.6355


 46.5263, 43.9873,
41.6355


363.6011,
362.6565, 368.7247

 32.8677, 30.6605,
28.4926


 84.2292, 81.1986,
78.9118

 22.1839, 20.3405,
18.4550

 109.0041,
105.8520, 103.8822

 14.1094, 12.6428,
11.1043


138.2153,
135.0496, 133.6322

 8.2790, 7.1830,
6.0220

172.2280,
169.1760, 168.5803

 4.3273, 3.5768,
2.7895

211.4075,
208.6155, 209.1451

 1.8889, 1.4398,
0.9882

256.1193,

 0.5704, 0.2458,

253.7524, 255.7450

0.0000

306.7287,
304.9713, 308.7987

0.0000, 0.0000,
0.0000

46.5263, 43.9873,
41.6355

46.5263, 43.9873,
41.6355

41.5029, 36.7154,
31.4058

52.3815, 52.4340,
53.6480

37.2702, 30.5607,
22.8712

59.1001, 62.0980,
67.5197

33.7889, 25.4696,
15.9412

66.7164, 73.0271,
83.3257

31.0149, 21.3817,
10.5152

75.2618, 85.2646,
101.1365

28.8995, 18.2306,
6.4816

79.5423, 92.0055,
108.1743

■ 27.3880, 15.9420,
3.7133

■ 26.4164, 14.4302,
2.0596

■ 25.9004, 13.6017,
1.2603

Harmonies

Analogous

The Analogous color harmony consists of three colors that are next to each other on the color wheel.



47.1026, 43.9873, 48.7404



46.5263, 43.9873, 41.6355



44.6682, 43.9873, 36.7081

Triad

The Triadic color harmony groups three colors that are evenly spaced from another and form a triangle on the color wheel.



46.5263, 43.9873, 41.6355



37.6944, 43.9873, 40.3232



41.5157, 43.9873, 63.9840

Complementary

The Complementary color scheme is a pair of colors which are on the opposite of each other on the color wheel.



46.5263, 43.9873, 41.6355



48.3719, 55.6886, 67.2313

Split Complementary

Split-complementary colors differ from the complementary color scheme. The scheme consists of three colors, the original color and two neighbors of the complement color.



39.0737, 43.9873, 61.1503



46.5263, 43.9873, 41.6355



36.9269, 43.9873, 47.0589

Square

The Square scheme is like the rectangle color scheme, but the four colors are evenly spaced on the color wheel.



46.5263, 43.9873, 41.6355



39.5618, 43.9873, 36.0085



37.4211, 43.9873, 54.7517



44.1389, 43.9873, 62.1451

Rectangle

The Rectangle color scheme consists of four colors that form a rectangle on the color wheel.



46.5263, 43.9873, 41.6355



42.9917, 43.9873, 35.0550



37.4211, 43.9873, 54.7517



40.6474, 43.9873, 63.5395

Sweetspot

The Sweet Spot groups the original color and five complimentary colors.



46.5275, 43.9893, 41.6364



88.3181, 90.3223, 94.9837



50.1108, 44.5454, 63.2100



18.7536, 19.1167, 20.0207



0.0000, 0.0000, 0.0000



20.3446, 21.4041, 23.3091

Same Dimension

The Same Dimension uses a secret algorithm to generate beautiful new colors.



46.5275, 43.9893, 41.6364



71.1898, 65.6153, 59.8342



50.6787, 52.2917, 43.0201



11.8757, 11.9421, 12.2912



16.3443, 8.6217, 0.8027



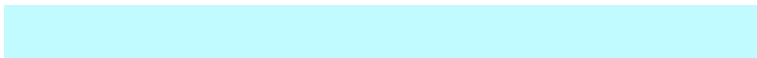
0.9382, 0.5307, 0.0530

Inverse Universe

The Inverse Universe completely reimagines the original color for something new.



48.3719, 55.6886, 67.2313



74.6263, 87.4218, 107.5486



43.7548, 46.4544, 65.6923



12.0830, 13.2563, 15.1655



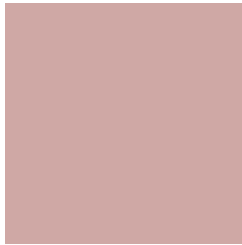
19.0284, 26.7035, 41.3439



1.0861, 1.5374, 2.3191

Previews

White Background



This preview shows how the XYZ color 46.5263, 43.9873, 41.6355 looks on a white background.

Color Contrast Check

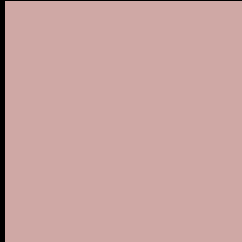
Large Text (above 18pt) WCAG AA × Fail

Any Text WCAG AA × Fail

Large Text (above 18pt) WCAG AAA × Fail

Any Text WCAG AAA × Fail

Black Background



This preview shows how the XYZ color 46.5263, 43.9873, 41.6355 looks on a black background.

Color Contrast Check

Large Text (above 18pt) WCAG AA ✓ Pass

Any Text WCAG AA ✓ Pass

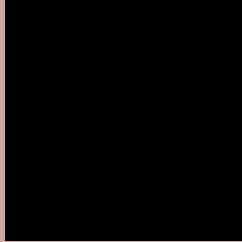
Large Text (above 18pt) WCAG AAA ✓ Pass

Any Text WCAG AAA ✓ Pass

If you want to check with other color combinations, try the [Color Contrast Checker](#).

XYZ 46.5263, 43.9873, 41.6355

Background



This preview shows how black text looks on a background with the XYZ color 46.5263, 43.9873, 41.6355.



This preview shows how white text looks on a background with the XYZ color 46.5263, 43.9873,

41.6355.

Color Blindness Simulation

Color vision deficiency is a very complex topic, and I could not describe the different causes any better than Wikipedia does, so if you want to learn more, you should check out their [article about color blindness](#).

Dichromacy



Original Color

46.5263, 43.9873, 41.6355

Protanopia

42.2692, 44.2916, 44.3515

Deuteranopia

44.8169, 43.9483, 41.2427



Tritanopia

48.0674, 44.0824, 48.6232

Trichromacy



Original Color

46.5263, 43.9873, 41.6355

Protanomaly

43.6898, 44.1756, 43.2698

Deuteranomaly

45.4327, 43.9863, 41.2176

Tritanomaly

47.4711, 44.1033, 46.0552

Monochromacy



Original Color

46.5263, 43.9873, 41.6355

Achromatopsia

42.8472, 45.0786, 49.0906

Achromatomaly

43.9562, 44.5348, 46.3237

CSS Examples

Text

The CSS property to change the color of the text to XYZ 46.5263, 43.9873, 41.6355 is called "color". The color property can be set on classes, ids or directly on the HTML element.

This example shows how text in the color `rgb(207, 168, 165)` looks like.

```
.text, #text, p{  
    color:rgb(207, 168, 165)  
}
```

If you want to add a text shadow in that color use the text-shadow property, you can generate a text shadow directly with our [CSS Text Shadow Generator](#).

Here you see how black text with a 4 pixel rgb(207, 168, 165) colored shadow looks like.

```
.shadow{ text-shadow: 4px 4px 2px rgb(207, 168, 165) }
```

Border

The CSS property to change the border of an element to XYZ 46.5263, 43.9873, 41.6355 is called "border". The border property can be set on classes, ids or directly on the HTML element.

This example shows the color as border, it can be applied via the CSS property "border" or "border-color".

```
.border, #border, table{ border:4px solid rgb(207, 168, 165) }
```


If only the border color should be changed use the property `border-color`.

```
.border{ border-color:rgb(207, 168, 165) }
```

If you want to add a box shadow in that color use:

Here you see how a box with a 4 pixel `rgb(207, 168, 165)` colored shadow looks like.

```
.boxshadow{ -moz-box-shadow:4px 4px 4px  
4px rgb(207, 168, 165); -webkit-box-  
shadow:4px 4px 4px 4px rgb(207, 168, 165);  
box-shadow:4px 4px 4px 4px rgb(207, 168,  
165) }
```

Background

The CSS property to change the background color of an element to XYZ 46.5263, 43.9873, 41.6355 is called "background". The background property can be set on classes, ids or directly on the HTML element.

```
.background, #background, body{  
background: rgb(207, 168, 165) }
```

If only the background color should be changed can be used:

```
.background{ background-color: rgb(207,  
168, 165) }
```

This example shows the color as background, it is applied via the CSS property "background".

To optimize and compress your CSS code, you can use our [online CSS compressor and optimizer](#) based on csstidy. If you want to create a linear or radial gradient as background or border, check our [CSS Gradient Generator](#).

Hey! You found this booklet interesting? Support Converting Colors with the new Membership Option!

The pro membership hides all ads, plus gives you double the colors in the color bucket, and more awesome pro features!

[Learn more, Memberships starting at \\$2.50/m!](#)

**Follow me
on Twitter!**

@ConvertingColor