

Converting Colors

XYZ(46.3378, 45.1644, 47.3472)

Have a look what the booklet for
XYZ(46.3378, 45.1644, 47.3472)
contains.

| | |
|--|----|
| XYZ(46.3332, 45.1638, 47.3498) | 3 |
| <i>Conversions</i> | 4 |
| <i>Details</i> | 6 |
| <i>Harmonies</i> | 12 |
| <i>Previews</i> | 24 |
| <i>Color Blindness Simulation</i> | 28 |
| <i>CSS Examples</i> | 31 |

Color

**XYZ(46.3332, 45.1638,
47.3498)**

Conversions

Conversions Part 1

| Format | Color |
|---------------|---------------------------|
| Hex | C7ADB0 |
| RGB | 199, 173, 176 |
| RGB Percent | 78%, 68%, 69% |
| CMY | 0.2196, 0.3216, 0.3098 |
| CMYK | 0.00, 0.13, 0.12, 0.22 |
| HSL | 353°, 19%, 73% |
| HSV | 353°, 13%, 78% |
| XYZ | 46.3332, 45.1638, 47.3498 |
| YIQ | 181.1160, 14.5330, 6.4450 |

Conversions

Conversions Part 2

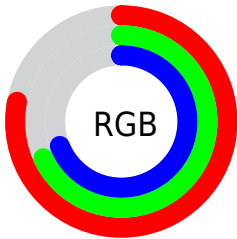
| Format | Color |
|-------------------------------------|-------------------------------|
| R _Y B | 199, 173, 176 |
| Decimal | 13086128 |
| CIE Lab | 73.00, 9.89, 1.92 |
| CIE LCh | 73, 10.075, 11.004 |
| Yxy | 45.1638, 0.3337, 0.3253 |
| Android (android.graphics.Color) | 4291276208 (0xFFC7ADB0) |
| YUV | 181.1160, -2.5222, 15.6843 |
| Hunter-Lab | 67.2040, 5.4582, 5.2690 |

Details

The XYZ color **46.3332, 45.1638, 47.3498** is a light color, and the websafe version is hex **CC9999**. A complement of this color would be **47.6225, 53.7177, 60.0856**, and the grayscale version is **43.9924, 46.2835, 50.4027**.

A 20% lighter version of the original color is **83.5489, 82.5730, 87.8786**, and **22.1525, 21.1497, 21.9835** is the 20% darker color. If you saturate the color by 10%, you get **41.1674, 37.4412, 37.5835**, and if you desaturate by 10%, it is **52.2959, 54.1175, 58.4975**.

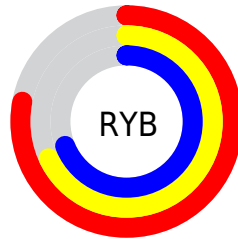
Distribution



Red (78%)

Green (68%)

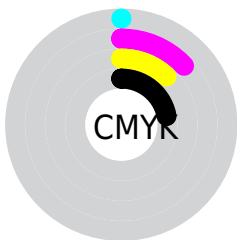
Blue (69%)



Red (78%)

Yellow (68%)

Blue (69%)

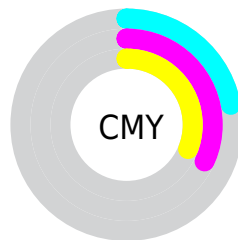


Cyan (0%)

Magenta (13%)

Yellow (12%)

Black (22%)



Cyan (22%)


Magenta (32%)


Yellow (31%)

Brightness & Saturation Gradients


These gradients show how the XYZ color 46.3332, 45.1638, 47.3498 changes by changing the brightness by 10 percent. The first figure shows a shift by +10% for each color and the second figure -10%.


Similar to the brightness gradients but the following saturation gradients show a change of the XYZ color 46.3332, 45.1638, 47.3498 by changing the saturation by 10% instead.


 46.3332, 45.1638,
47.3498

 46.3332, 45.1638,
47.3498


362.8401,
367.4365, 392.6432

 32.7146, 31.5865,
32.9559


 83.9423, 82.9662,
87.5910

 22.0661, 21.0458,
21.8219

108.6634,
107.9600, 114.2754

 14.0223, 13.1575,
13.5290


137.8161,
137.5281, 145.8937

 8.2180, 7.5371,
7.6588

171.7657,
172.0548, 182.8645

 4.2877, 3.8002,
3.7928

210.8775,
211.9247, 225.6063

 1.8662, 1.5624,
1.5124

255.5170,

 0.5571, 0.3321,

257.5220, 274.5377

0.2271

306.0494,
309.2311, 330.0771

■ 0.0000, 0.0000,
0.0000

■ 46.3332, 45.1638,
47.3498

■ 46.3332, 45.1638,
47.3498

■ 41.1674, 37.4412,
37.5835

■ 52.2959, 54.1175,
58.4975

■ 36.7610, 30.8902,
29.1419

■ 59.0833, 64.3465,
71.0746

■ 33.0792, 25.4552,
21.9688

■ 66.7265, 75.9002,
85.1302

■ 30.0829, 21.0739,
16.0027

■ 75.2541, 88.8236,
100.7103

■ 27.7294, 17.6779,
11.1768

■ 77.3634, 90.8822,
108.0723

■ 25.9712, 15.1907,
7.4181

■ 24.7540, 13.5243,
4.6448

■ 24.0134, 12.5733,
2.7632

■ 23.7074, 12.2038,
1.9135

Harmonies

Analogous

The Analogous color harmony consists of three colors that are next to each other on the color wheel.



46.2050, 45.1638, 52.3965



46.3332, 45.1638, 47.3498



45.5302, 45.1638, 43.0901

Triad

The Triadic color harmony groups three colors that are evenly spaced from another and form a triangle on the color wheel.



46.3332, 45.1638, 47.3498



40.7457, 45.1638, 42.2220



41.8353, 45.1638, 58.9150

Complementary

The Complementary color scheme is a pair of colors which are on the opposite of each other on the color wheel.



46.3332, 45.1638, 47.3498



47.6225, 53.7177, 60.0856

Split Complementary

Split-complementary colors differ from the complementary color scheme. The scheme consists of three colors, the original color and two neighbors of the complement color.



40.4247, 45.1638, 55.8088



46.3332, 45.1638, 47.3498



39.8076, 45.1638, 46.0897

Square

The Square scheme is like the rectangle color scheme, but the four colors are evenly spaced on the color wheel.



46.3332, 45.1638, 47.3498



42.2845, 45.1638, 40.2670



39.6917, 45.1638, 51.0479



43.5757, 45.1638, 59.3100

Rectangle

The Rectangle color scheme consists of four colors that form a rectangle on the color wheel.



46.3332, 45.1638, 47.3498



44.5873, 45.1638, 41.1806



39.6917, 45.1638, 51.0479



41.3081, 45.1638, 58.1439

Sweetspot

The Sweet Spot groups the original color and five complimentary colors.



46.3345, 45.1658, 47.3508



90.4628, 93.0962, 100.3707



48.0100, 45.7440, 60.3324



19.1838, 19.6573, 21.1500



0.0000, 0.0000, 0.0000



20.3446, 21.4041, 23.3091

Same Dimension

The Same Dimension uses a secret algorithm to generate beautiful new colors.



46.3345, 45.1658, 47.3508



78.1106, 74.5638, 77.2263



48.0239, 49.0141, 46.4671



10.6828, 10.6565, 11.3127



15.2612, 7.8540, 1.3193



0.7397, 0.3787, 0.1523

Inverse Universe

The Inverse Universe completely reimagines the original color for something new.



46.3345, 45.1658, 47.3508



78.1106, 74.5638, 77.2263



45.7488, 49.4188, 61.1609



10.6828, 10.6565, 11.3127



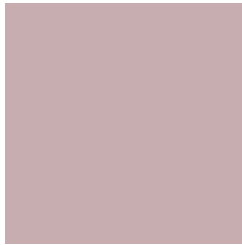
15.2612, 7.8540, 1.3193



0.7397, 0.3787, 0.1523

Previews

White Background



This preview shows how the XYZ color 46.3332, 45.1638, 47.3498 looks on a white background.

Color Contrast Check

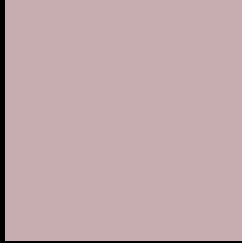
Large Text (above 18pt) WCAG AA × Fail

Any Text WCAG AA × Fail

Large Text (above 18pt) WCAG AAA × Fail

Any Text WCAG AAA × Fail

Black Background



This preview shows how the XYZ color 46.3332, 45.1638, 47.3498 looks on a black background.

Color Contrast Check

Large Text (above 18pt) WCAG AA ✓ Pass

Any Text WCAG AA ✓ Pass

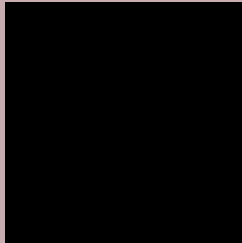
Large Text (above 18pt) WCAG AAA ✓ Pass

Any Text WCAG AAA ✓ Pass

If you want to check with other color combinations, try the [Color Contrast Checker](#).

XYZ 46.3332, 45.1638, 47.3498

Background



This preview shows how black text looks on a background with the XYZ color 46.3332, 45.1638, 47.3498.



This preview shows how white text looks on a background with the XYZ color 46.3332, 45.1638,

Color Blindness Simulation

Color vision deficiency is a very complex topic, and I could not describe the different causes any better than Wikipedia does, so if you want to learn more, you should check out their [article about color blindness](#).

Dichromacy



Original Color

46.3332, 45.1638, 47.3498

Protanopia

43.3485, 45.0405, 49.0568

Deuteranopia

46.0687, 45.0275, 47.3374



Tritanopia

47.3289, 45.2872, 52.1457

Trichromacy



Original Color

46.3332, 45.1638, 47.3498

Protanomaly

44.3003, 44.9564, 48.4621

Deuteranomaly

46.0687, 45.0275, 47.3374

Tritanomaly

47.0154, 45.1618, 50.4951

Monochromacy



Original Color

46.3332, 45.1638, 47.3498

Achromatopsia

43.9204, 46.2077, 50.3202

Achromatomaly

44.7961, 45.7868, 49.1246

CSS Examples

Text

The CSS property to change the color of the text to XYZ 46.3332, 45.1638, 47.3498 is called "color". The color property can be set on classes, ids or directly on the HTML element.

This example shows how text in the color `rgb(199, 173, 176)` looks like.

```
.text, #text, p{  
    color:rgb(199, 173, 176)  
}
```

If you want to add a text shadow in that color use the text-shadow property, you can generate a text shadow directly with our [CSS Text Shadow Generator](#).

Here you see how black text with a 4 pixel rgb(199, 173, 176) colored shadow looks like.

```
.shadow{ text-shadow: 4px 4px 2px rgb(199, 173, 176) }
```

Border

The CSS property to change the border of an element to XYZ 46.3332, 45.1638, 47.3498 is called "border". The border property can be set on classes, ids or directly on the HTML element.

This example shows the color as border, it can be applied via the CSS property "border" or "border-color".

```
.border, #border, table{ border:4px solid rgb(199, 173, 176) }
```


If only the border color should be changed use the property `border-color`.

```
.border{ border-color:rgb(199, 173, 176) }
```

If you want to add a box shadow in that color use:

Here you see how a box with a 4 pixel `rgb(199, 173, 176)` colored shadow looks like.

```
.boxshadow{ -moz-box-shadow:4px 4px 4px  
4px rgb(199, 173, 176); -webkit-box-  
shadow:4px 4px 4px 4px rgb(199, 173, 176);  
box-shadow:4px 4px 4px 4px rgb(199, 173,  
176) }
```

Background

The CSS property to change the background color of an element to XYZ 46.3332, 45.1638, 47.3498 is called "background". The background property can be set on classes, ids or directly on the HTML element.

```
.background, #background, body{  
background: rgb(199, 173, 176) }
```

If only the background color should be changed can be used:

```
.background{ background-color: rgb(199,  
173, 176) }
```

This example shows the color as background, it is applied via the CSS property "background".

To optimize and compress your CSS code, you can use our [online CSS compressor and optimizer](#) based on csstidy. If you want to create a linear or radial gradient as background or border, check our [CSS Gradient Generator](#).

Hey! You found this booklet interesting? Support Converting Colors with the new Membership Option!

The pro membership hides all ads, plus gives you double the colors in the color bucket, and more awesome pro features!

[Learn more, Memberships starting at \\$2.50/m!](#)

**Follow me
on Twitter!**

@ConvertingColor