

Converting Colors

XYZ(46.3973, 42.5621, 41.3897)

Have a look what the booklet for
XYZ(46.3973, 42.5621, 41.3897)
contains.

XYZ(46.4671, 42.6126, 41.3733)	3
<i>Conversions</i>	4
<i>Details</i>	6
<i>Harmonies</i>	12
<i>Previews</i>	24
<i>Color Blindness Simulation</i>	28
<i>CSS Examples</i>	31

Color

**XYZ(46.4671, 42.6126,
41.3733)**

Conversions

Conversions Part 1

Format	Color
Hex	D2A3A5
RGB	210, 163, 165
RGB Percent	82%, 64%, 65%
CMY	0.1765, 0.3608, 0.3529
CMYK	0.00, 0.22, 0.21, 0.18
HSL	357°, 34%, 73%
HSV	357°, 22%, 82%
XYZ	46.4671, 42.6126, 41.3733
YIQ	177.2810, 27.3700, 10.5860

Conversions

Conversions Part 2

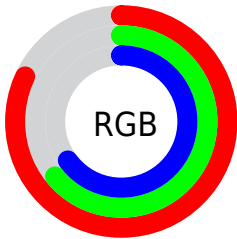
Format	Color
RYB	210, 163, 165
Decimal	13804453
CIELab	71.29, 17.63, 5.64
CIELCh	71, 18.513, 17.743
Yxy	42.6126, 0.3562, 0.3267
Android (android.graphics.Color)	4291994533 (0xFFD2A3A5)
YUV	177.2810, -6.0545, 28.6946
Hunter-Lab	65.2783, 12.8247, 8.1169

Details

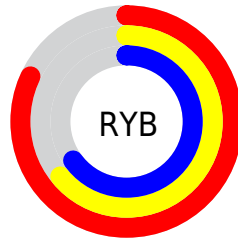
The XYZ color **46.4671, 42.6126, 41.3733** is a light color, and the websafe version is hex **CC9999**. A complement of this color would be **49.5378, 58.4349, 68.3455**, and the grayscale version is **41.9594, 44.1445, 48.0734**.

A 20% lighter version of the original color is **79.2297, 76.5701, 78.3138**, and **22.1826, 19.5297, 18.2232** is the 20% darker color. If you saturate the color by 10%, you get **41.3549, 35.0902, 31.3383**, and if you desaturate by 10%, it is **52.4886, 51.4922, 53.1320**.

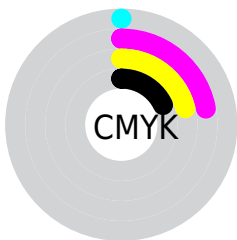
Distribution



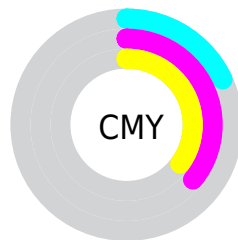
- Red (82%)
- Green (64%)
- Blue (65%)



- Red (82%)
- Yellow (64%)
- Blue (65%)



- Cyan (0%)
- Magenta (22%)
- Yellow (21%)
- Black (18%)




- Cyan (18%)
- Magenta (36%)
- Yellow (35%)

Brightness & Saturation Gradients


These gradients show how the XYZ color 46.4671, 42.6126, 41.3733 changes by changing the brightness by 10 percent. The first figure shows a shift by +10% for each color and the second figure -10%.


Similar to the brightness gradients but the following saturation gradients show a change of the XYZ color 46.4671, 42.6126, 41.3733 by changing the saturation by 10% instead.


 46.4671, 42.6126,
41.3733

 46.4671, 42.6126,
41.3733


363.3679,
357.0162, 367.6011

 32.8208, 29.5813,
28.2890


 84.1412, 79.1259,
78.5101

 22.1477, 19.5210,
18.3027


 108.8997,
103.3767, 103.3996

 14.0827, 12.0473,
10.9958


138.0929,
132.1361, 133.0613

 8.2603, 6.7759,
5.9499

172.0863,
165.7885, 167.9137

 4.3152, 3.3224,
2.7463

211.2451,
204.7184, 208.3754

 1.8819, 1.3023,
0.9666

255.9347,

 0.5663, 0.1429,

249.3100, 254.8648

0.0000

306.5206,
299.9478, 307.8005

■ 0.0000, 0.0000,
0.0000

■ 46.4671, 42.6126,
41.3733

■ 46.4671, 42.6126,
41.3733

■ 41.3549, 35.0902,
31.3383

■ 52.4886, 51.4922,
53.1320

■ 37.1045, 28.8528,
22.9437

■ 59.4568, 61.7851,
66.6873

■ 33.6694, 23.8303,
16.1029

■ 67.4114, 73.5513,
82.1110

■ 30.9975, 19.9434,
10.7205

■ 76.3886, 86.8456,
99.4703

■ 29.0304, 17.1038,
6.6908

■ 80.3885, 92.4417,
108.2139

■ 27.7015, 15.2097,
3.8935

■ 26.9313, 14.1394,
2.1873

■ 26.6274, 13.7213,
1.5012

Harmonies

Analogous

The Analogous color harmony consists of three colors that are next to each other on the color wheel.



46.6296, 42.6126, 50.1287



46.4671, 42.6126, 41.3733



44.6568, 42.6126, 34.8442

Triad

The Triadic color harmony groups three colors that are evenly spaced from another and form a triangle on the color wheel.



46.4671, 42.6126, 41.3733



36.2363, 42.6126, 35.8102



39.2460, 42.6126, 65.2212

Complementary

The Complementary color scheme is a pair of colors which are on the opposite of each other on the color wheel.



46.4671, 42.6126, 41.3733



49.5378, 58.4349, 68.3455

Split Complementary

Split-complementary colors differ from the complementary color scheme. The scheme consists of three colors, the original color and two neighbors of the complement color.



36.6133, 42.6126, 60.2590



46.4671, 42.6126, 41.3733



34.9362, 42.6126, 42.8569

Square

The Square scheme is like the rectangle color scheme, but the four colors are evenly spaced on the color wheel.



46.4671, 42.6126, 41.3733



38.7073, 42.6126, 31.9263



35.0706, 42.6126, 51.8136



42.3513, 42.6126, 64.6905

Rectangle

The Rectangle color scheme consists of four colors that form a rectangle on the color wheel.



46.4671, 42.6126, 41.3733



42.8089, 42.6126, 32.2873



35.0706, 42.6126, 51.8136



38.2795, 42.6126, 64.1164

Sweetspot

The Sweet Spot groups the original color and five complimentary colors.



46.4683, 42.6146, 41.3742



86.9868, 88.0829, 93.2352



50.6454, 44.2087, 66.8371



18.4775, 18.6448, 19.6815



0.0000, 0.0000, 0.0000



20.3446, 21.4041, 23.3091

Same Dimension

The Same Dimension uses a secret algorithm to generate beautiful new colors.



46.4683, 42.6146, 41.3742



68.0239, 60.1184, 56.2053



50.3622, 50.6909, 41.7826



11.8288, 11.8163, 12.3743



16.2516, 8.3735, 0.9650



0.9160, 0.4711, 0.0924

Inverse Universe

The Inverse Universe completely reimagines the original color for something new.



46.4683, 42.6146, 41.3742



68.0239, 60.1184, 56.2053



44.9041, 48.7721, 68.0205



11.8288, 11.8163, 12.3743



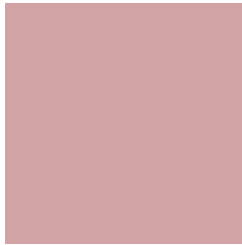
16.2516, 8.3735, 0.9650



0.9160, 0.4711, 0.0924

Previews

White Background



This preview shows how the XYZ color 46.4671, 42.6126, 41.3733 looks on a white background.

Color Contrast Check

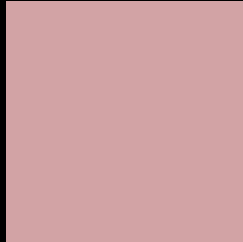
Large Text (above 18pt) WCAG AA × Fail

Any Text WCAG AA × Fail

Large Text (above 18pt) WCAG AAA × Fail

Any Text WCAG AAA × Fail

Black Background



This preview shows how the XYZ color 46.4671, 42.6126, 41.3733 looks on a black background.

Color Contrast Check

Large Text (above 18pt) WCAG AA ✓ Pass

Any Text WCAG AA ✓ Pass

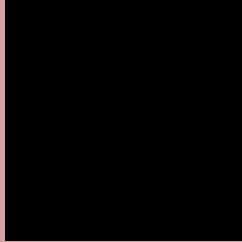
Large Text (above 18pt) WCAG AAA ✓ Pass

Any Text WCAG AAA ✓ Pass

If you want to check with other color combinations, try the [Color Contrast Checker](#).

XYZ 46.4671, 42.6126, 41.3733

Background



This preview shows how black text looks on a background with the XYZ color 46.4671, 42.6126, 41.3733.



This preview shows how white text looks on a background with the XYZ color 46.4671, 42.6126,

Color Blindness Simulation

Color vision deficiency is a very complex topic, and I could not describe the different causes any better than Wikipedia does, so if you want to learn more, you should check out their [article about color blindness](#).

Dichromacy



Original Color

46.4671, 42.6126, 41.3733

Protanopia

41.0771, 42.7961, 44.6235

Deuteranopia

43.6538, 42.7920, 41.0808



Tritanopia

47.4243, 42.7455, 45.7956

Trichromacy



Original Color

46.4671, 42.6126, 41.3733

Protanomaly

42.7714, 42.5612, 43.4970

Deuteranomaly

44.6070, 42.7353, 41.0197

Tritanomaly

47.1350, 42.6298, 44.2722

Monochromacy



Original Color

46.4671, 42.6126, 41.3733

Achromatopsia

41.7894, 43.9657, 47.8787

Achromatomaly

43.2816, 43.3410, 45.6196

CSS Examples

Text

The CSS property to change the color of the text to XYZ 46.4671, 42.6126, 41.3733 is called "color". The color property can be set on classes, ids or directly on the HTML element.

This example shows how text in the color `rgb(210, 163, 165)` looks like.

```
.text, #text, p{  
    color:rgb(210, 163, 165)  
}
```

If you want to add a text shadow in that color use the text-shadow property, you can generate a text shadow directly with our [CSS Text Shadow Generator](#).

Here you see how black text with a 4 pixel rgb(210, 163, 165) colored shadow looks like.

```
.shadow{ text-shadow: 4px 4px 2px rgb(210, 163, 165) }
```

Border

The CSS property to change the border of an element to XYZ 46.4671, 42.6126, 41.3733 is called "border". The border property can be set on classes, ids or directly on the HTML element.

This example shows the color as border, it can be applied via the CSS property "border" or "border-color".

```
.border, #border, table{ border:4px solid rgb(210, 163, 165) }
```


If only the border color should be changed use the property `border-color`.

```
.border{ border-color:rgb(210, 163, 165) }
```

If you want to add a box shadow in that color use:

Here you see how a box with a 4 pixel `rgb(210, 163, 165)` colored shadow looks like.

```
.boxshadow{ -moz-box-shadow:4px 4px 4px  
4px rgb(210, 163, 165); -webkit-box-  
shadow:4px 4px 4px 4px rgb(210, 163, 165);  
box-shadow:4px 4px 4px 4px rgb(210, 163,  
165) }
```

Background

The CSS property to change the background color of an element to XYZ 46.4671, 42.6126, 41.3733 is called "background". The background property can be set on classes, ids or directly on the HTML element.

```
.background, #background, body{  
background: rgb(210, 163, 165) }
```

If only the background color should be changed can be used:

```
.background{ background-color: rgb(210,  
163, 165) }
```

This example shows the color as background, it is applied via the CSS property "background".

To optimize and compress your CSS code, you can use our [online CSS compressor and optimizer](#) based on csstidy. If you want to create a linear or radial gradient as background or border, check our [CSS Gradient Generator](#).

Hey! You found this booklet interesting? Support Converting Colors with the new Membership Option!

The pro membership hides all ads, plus gives you double the colors in the color bucket, and more awesome pro features!

[Learn more, Memberships starting at \\$2.50/m!](#)

**Follow me
on Twitter!**

@ConvertingColor