

# Converting Colors

XYZ(46.4529, 42.9877, 39.5679)

Have a look what the booklet for  
XYZ(46.4529, 42.9877, 39.5679)  
contains.

<b>XYZ(46.2868, 42.8258, 39.5448)</b> .....	3
<b><i>Conversions</i></b> .....	4
<b><i>Details</i></b> .....	6
<b><i>Harmonies</i></b> .....	12
<b><i>Previews</i></b> .....	24
<b><i>Color Blindness Simulation</i></b> .....	28
<b><i>CSS Examples</i></b> .....	31

# Color

**XYZ(46.2868, 42.8258,  
39.5448)**

# Conversions

## Conversions Part 1

Format	Color
Hex	D2A4A1
RGB	210, 164, 161
RGB Percent	82%, 64%, 63%
CMY	0.1765, 0.3568, 0.3686
CMYK	0.00, 0.22, 0.23, 0.18
HSL	4°, 35%, 73%
HSV	4°, 23%, 82%
XYZ	46.2868, 42.8258, 39.5448
YIQ	177.4120, 28.3790, 8.8190

# Conversions

## Conversions Part 2

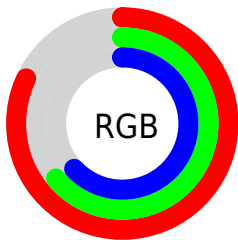
Format	Color
RYB	210, 164, 161
Decimal	13804705
CIELab	71.44, 16.50, 8.06
CIELCh	71, 18.359, 26.036
Yxy	42.8258, 0.3598, 0.3329
Android (android.graphics.Color)	4291994785 (0xFFD2A4A1)
YUV	177.4120, -8.0911, 28.5797
Hunter-Lab	65.4414, 11.7308, 9.9814

# Details

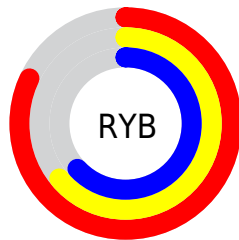
The XYZ color **46.2868, 42.8258, 39.5448** is a light color, and the websafe version is hex **CC9999**. A complement of this color would be **48.6429, 56.8540, 69.3831**, and the grayscale version is **42.0384, 44.2277, 48.1639**.

A 20% lighter version of the original color is **78.9662, 76.8809, 75.6433**, and **22.1262, 19.6827, 17.3848** is the 20% darker color. If you saturate the color by 10%, you get **41.3298, 35.6305, 29.5104**, and if you desaturate by 10%, it is **52.1040, 51.2430, 51.4013**.

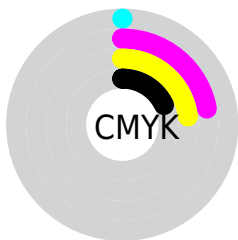
# Distribution



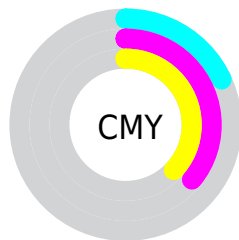
- Red (82%)
- Green (64%)
- Blue (63%)



- Red (82%)
- Yellow (64%)
- Blue (63%)



- Cyan (0%)
- Magenta (22%)
- Yellow (23%)
- Black (18%)




- Cyan (18%)
- Magenta (36%)
- Yellow (37%)


# Brightness & Saturation Gradients

These gradients show how the XYZ color 46.2868, 42.8258, 39.5448 changes by changing the brightness by 10 percent. The first figure shows a shift by +10% for each color and the second figure -10%.


Similar to the brightness gradients but the following saturation gradients show a change of the XYZ color 46.2868, 42.8258, 39.5448 by changing the saturation by 10% instead.





 46.2868, 42.8258,  
39.5448


 46.2868, 42.8258,  
39.5448

362.6571,  
357.8949, 359.6961

 32.6778, 29.7485,  
26.8727


 83.8733, 79.4479,  
75.6993

 22.0378, 19.6477,  
17.2461


 108.5815,  
103.7615, 100.0189

 14.0014, 12.1392,  
10.2463


137.7201,  
132.5893, 129.0580

 8.2034, 6.8386,  
5.4548

171.6545,  
166.3156, 163.2352

 4.2782, 3.3614,  
2.4531

210.7501,  
205.3250, 202.9691

 1.8607, 1.3232,  
0.8152

255.3721,

 0.5539, 0.1590,

250.0017, 248.6782

0.0000

305.8860,  
300.7302, 300.7810

■ 0.0000, 0.0000,  
0.0000

■ 46.2868, 42.8258,  
39.5448

■ 46.2868, 42.8258,  
39.5448

■ 41.3298, 35.6305,  
29.5104

■ 52.1040, 51.2430,  
51.4013

■ 37.1889, 29.5948,  
21.2054

■ 58.8158, 60.9289,  
65.1612

■ 33.8212, 24.6598,  
14.5328

■ 66.4590, 71.9352,  
80.9040

■ 31.1788, 20.7590,  
9.3850

■ 75.0673, 84.3089,  
98.7040

■ 29.2081, 17.8189,  
5.6415

■ 80.3884, 92.4417,  
108.2138

■ 27.8483, 15.7560,  
3.1636

■ 27.0275, 14.4730,  
1.7846

■ 26.7208, 13.9864,  
1.2913

# Harmonies

## Analogous

The Analogous color harmony consists of three colors that are next to each other on the color wheel.



46.9320, 42.8258, 47.8175



46.2868, 42.8258, 39.5448



44.1191, 42.8258, 33.8796

# Triad

The Triadic color harmony groups three colors that are evenly spaced from another and form a triangle on the color wheel.



46.2868, 42.8258, 39.5448



35.9677, 42.8258, 37.7454



40.2948, 42.8258, 65.7737

# Complementary

The Complementary color scheme is a pair of colors which are on the opposite of each other on the color wheel.



46.2868, 42.8258, 39.5448



48.6429, 56.8540, 69.3831

# Split Complementary

Split-complementary colors differ from the complementary color scheme. The scheme consists of three colors, the original color and two neighbors of the complement color.



37.4710, 42.8258, 62.2348



46.2868, 42.8258, 39.5448



35.0541, 42.8258, 45.4623

# Square

The Square scheme is like the rectangle color scheme, but the four colors are evenly spaced on the color wheel.



46.2868, 42.8258, 39.5448



38.1490, 42.8258, 32.9367



35.5904, 42.8258, 54.5147



43.3719, 42.8258, 63.6732



# Rectangle

The Rectangle color scheme consists of four colors that form a rectangle on the color wheel.



46.2868, 42.8258, 39.5448



42.1570, 42.8258, 31.9743



35.5904, 42.8258, 54.5147



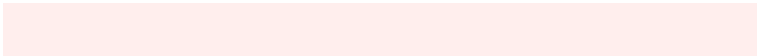
39.2860, 42.8258, 65.1935

# Sweetspot

The Sweet Spot groups the original color and five complimentary colors.



46.2880, 42.8278, 39.5457



87.1937, 88.6747, 92.7560



50.6534, 43.7238, 65.1546



18.5253, 18.7812, 19.5710



0.0000, 0.0000, 0.0000



20.3446, 21.4041, 23.3091



# Same Dimension

The Same Dimension uses a secret algorithm to generate beautiful new colors.



46.2880, 42.8278, 39.5457



67.8283, 60.6609, 53.2616



50.9842, 52.2203, 41.1111



11.8661, 11.9229, 12.2880



16.3244, 8.5818, 0.7961



0.9336, 0.5216, 0.0515

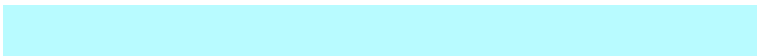


# Inverse Universe

The Inverse Universe completely reimagines the original color for something new.



48.6429, 56.8540, 69.3831



72.1008, 86.1196, 107.4304



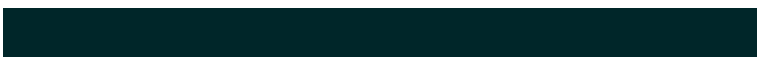
43.2750, 46.1182, 67.5938



12.0937, 13.2777, 15.1691



19.3195, 27.2856, 41.4409

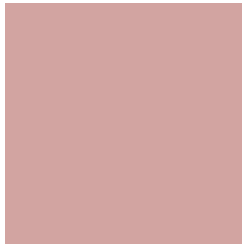


1.0995, 1.5641, 2.3235



# Previews

## White Background



This preview shows how the XYZ color 46.2868, 42.8258, 39.5448 looks on a white background.

## Color Contrast Check

Large Text (above 18pt) WCAG AA × Fail

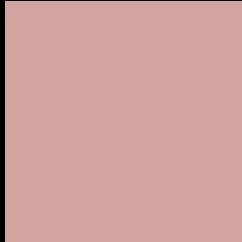
Any Text WCAG AA × Fail

Large Text (above 18pt) WCAG AAA × Fail

Any Text WCAG AAA × Fail



# Black Background



This preview shows how the XYZ color 46.2868, 42.8258, 39.5448 looks on a black background.

## Color Contrast Check

Large Text (above 18pt) WCAG AA ✓ Pass

Any Text WCAG AA ✓ Pass

Large Text (above 18pt) WCAG AAA ✓ Pass

Any Text WCAG AAA ✓ Pass

If you want to check with other color combinations, try the [Color Contrast Checker](#).

**XYZ 46.2868, 42.8258, 39.5448**

## **Background**



This preview shows how black text looks on a background with the XYZ color 46.2868, 42.8258, 39.5448.



This preview shows how white text looks on a background with the XYZ color 46.2868, 42.8258,

39.5448.

# Color Blindness Simulation

Color vision deficiency is a very complex topic, and I could not describe the different causes any better than Wikipedia does, so if you want to learn more, you should check out their [article about color blindness](#).

## Dichromacy



### Original Color

46.2868, 42.8258, 39.5448

### Protanopia

41.1274, 43.1533, 42.7210

### Deuteranopia

43.8218, 42.9198, 39.2324



## Tritanopia

47.7117, 42.8937, 45.8090

# Trichromacy



## Original Color

46.2868, 42.8258, 39.5448

## Protanomaly

42.8403, 42.9188, 41.6235

## Deuteranomaly

44.5210, 42.7321, 39.1593

## Tritanomaly

47.1226, 42.9078, 43.3345

# Monochromacy



## Original Color

46.2868, 42.8258, 39.5448

## Achromatopsia

41.7894, 43.9657, 47.8787

## Achromatomaly

43.0895, 43.2641, 44.6078

# CSS Examples

## Text

The CSS property to change the color of the text to XYZ 46.2868, 42.8258, 39.5448 is called "color". The color property can be set on classes, ids or directly on the HTML element.

This example shows how text in the color `rgb(210, 164, 161)` looks like.

```
.text, #text, p{  
    color:rgb(210, 164, 161)  
}
```

If you want to add a text shadow in that color use the text-shadow property, you can generate a text shadow directly with our [CSS Text Shadow Generator](#).

Here you see how black text with a 4 pixel rgb(210, 164, 161) colored shadow looks like.

```
.shadow{ text-shadow: 4px 4px 2px rgb(210, 164, 161) }
```

## Border

The CSS property to change the border of an element to XYZ 46.2868, 42.8258, 39.5448 is called "border". The border property can be set on classes, ids or directly on the HTML element.

This example shows the color as border, it can be applied via the CSS property "border" or "border-color".

```
.border, #border, table{ border:4px solid rgb(210, 164, 161) }
```



If only the border color should be changed use the property `border-color`.

```
.border{ border-color:rgb(210, 164, 161) }
```

If you want to add a box shadow in that color use:

Here you see how a box with a 4 pixel `rgb(210, 164, 161)` colored shadow looks like.

```
.boxshadow{ -moz-box-shadow:4px 4px 4px  
4px rgb(210, 164, 161); -webkit-box-  
shadow:4px 4px 4px 4px rgb(210, 164, 161);  
box-shadow:4px 4px 4px 4px rgb(210, 164,  
161) }
```

# Background

The CSS property to change the background color of an element to XYZ 46.2868, 42.8258, 39.5448 is called "background". The background property can be set on classes, ids or directly on the HTML element.

```
.background, #background, body{  
background: rgb(210, 164, 161) }
```

If only the background color should be changed can be used:

```
.background{ background-color: rgb(210,  
164, 161) }
```

This example shows the color as background, it is applied via the CSS property "background".

To optimize and compress your CSS code, you can use our [online CSS compressor and optimizer](#) based on csstidy. If you want to create a linear or radial gradient as background or border, check our [CSS Gradient Generator](#).

Hey! You found this booklet interesting? Support Converting Colors with the new Membership Option!

The pro membership hides all ads, plus gives you double the colors in the color bucket, and more awesome pro features!

**[Learn more, Memberships starting at \\$2.50/m!](#)**

**Follow me  
on Twitter!**

@ConvertingColor