

Converting Colors

XYZ(46.4654, 43.9281, 43.3422)

Have a look what the booklet for
XYZ(46.4654, 43.9281, 43.3422)
contains.

XYZ(46.6177, 43.9916, 43.5703)	3
<i>Conversions</i>	4
<i>Details</i>	6
<i>Harmonies</i>	12
<i>Previews</i>	24
<i>Color Blindness Simulation</i>	28
<i>CSS Examples</i>	31

Color

**XYZ(46.6177, 43.9916,
43.5703)**

Conversions

Conversions Part 1

Format	Color
Hex	CEA8A9
RGB	206, 168, 169
RGB Percent	81%, 66%, 66%
CMY	0.1922, 0.3412, 0.3373
CMYK	0.00, 0.18, 0.18, 0.19
HSL	358°, 28%, 73%
HSV	358°, 18%, 81%
XYZ	46.6177, 43.9916, 43.5703
YIQ	179.4760, 22.3270, 8.3670

Conversions

Conversions Part 2

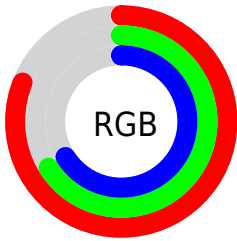
Format	Color
R _Y B	206, 168, 169
Decimal	13543593
CIE Lab	72.22, 14.04, 4.73
CIE LCh	72, 14.816, 18.609
Yxy	43.9916, 0.3474, 0.3279
Android (android.graphics.Color)	4291733673 (0xFFCEA8A9)
YUV	179.4760, -5.1647, 23.2615
Hunter-Lab	66.3262, 9.3889, 7.4801

Details

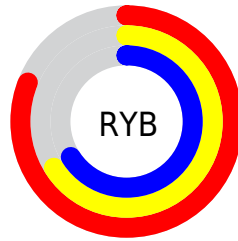
The XYZ color **46.6177, 43.9916, 43.5703** is a light color, and the websafe version is hex **CC9999**. A complement of this color would be **49.2410, 56.8764, 66.1435**, and the grayscale version is **43.1211, 45.3668, 49.4044**.

A 20% lighter version of the original color is **81.0822, 79.4172, 81.5766**, and **22.2188, 20.3544, 19.5874** is the 20% darker color. If you saturate the color by 10%, you get **41.3707, 36.2835, 33.2321**, and if you desaturate by 10%, it is **52.7585, 53.0242, 55.6329**.

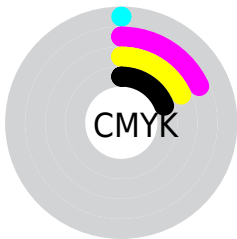
Distribution



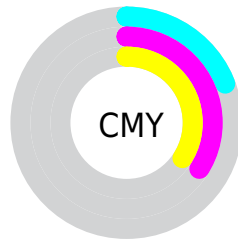
- Red (81%)
- Green (66%)
- Blue (66%)



- Red (81%)
- Yellow (66%)
- Blue (66%)



- Cyan (0%)
- Magenta (18%)
- Yellow (18%)
- Black (19%)



- Cyan (19%)
- Magenta (34%)
- Yellow (34%)

Brightness & Saturation Gradients


These gradients show how the XYZ color 46.6177, 43.9916, 43.5703 changes by changing the brightness by 10 percent. The first figure shows a shift by +10% for each color and the second figure -10%.


Similar to the brightness gradients but the following saturation gradients show a change of the XYZ color 46.6177, 43.9916, 43.5703 by changing the saturation by 10% instead.


 46.6177, 43.9916,
43.5703


 46.6177, 43.9916,
43.5703


363.9609,
362.6740, 376.9418

 32.9402, 30.6639,
29.9981


 84.3649, 81.2051,
81.8663

 22.2397, 20.3431,
19.5851


 109.1653,
105.8597, 107.4273

 14.1507, 12.6447,
11.9128


138.4041,
135.0587, 137.8215

 8.3080, 7.1843,
6.5625

172.4466,
169.1866, 173.4677

 4.3461, 3.5776,
3.1158

211.6582,
208.6276, 214.7842

 1.8997, 1.4402,
1.1540

256.4042,

 0.5767, 0.2461,

253.7663, 262.1897

0.0000

307.0500,
304.9869, 316.1028

■ 0.0000, 0.0000,
0.0000

■ 46.6177, 43.9916,
43.5703

■ 46.6177, 43.9916,
43.5703

■ 41.3707, 36.2835,
33.2321

■ 52.7585, 53.0242,
55.6329

■ 36.9726, 29.8321,
24.5371

■ 59.8283, 63.4330,
69.4906

■ 33.3797, 24.5725,
17.4013

■ 67.8646, 75.2744,
85.2138

■ 30.5433, 20.4318,
11.7327

■ 76.9020, 88.5998,
102.8678

■ 28.4093, 17.3290,
7.4293

■ 79.2639, 91.8619,
108.1612

■ 26.9165, 15.1723,
4.3761

■ 25.9931, 13.8538,
2.4395

■ 25.5353, 13.2102,
1.4487

■ 25.4835, 13.1338,
1.3471

Harmonies

Analogous

The Analogous color harmony consists of three colors that are next to each other on the color wheel.



46.7891, 43.9916, 50.7175



46.6177, 43.9916, 43.5703



45.1282, 43.9916, 38.1473

Triad

The Triadic color harmony groups three colors that are evenly spaced from another and form a triangle on the color wheel.



46.6177, 43.9916, 43.5703



38.2523, 43.9916, 39.2278



40.8548, 43.9916, 62.9726

Complementary

The Complementary color scheme is a pair of colors which are on the opposite of each other on the color wheel.



46.6177, 43.9916, 43.5703



49.2410, 56.8764, 66.1435

Split Complementary

Split-complementary colors differ from the complementary color scheme. The scheme consists of three colors, the original color and two neighbors of the complement color.



38.6637, 43.9916, 59.1861



46.6177, 43.9916, 43.5703



37.2023, 43.9916, 45.1876

Square

The Square scheme is like the rectangle color scheme, but the four colors are evenly spaced on the color wheel.



46.6177, 43.9916, 43.5703



40.2724, 43.9916, 35.8209



37.3498, 43.9916, 52.5061



43.3917, 43.9916, 62.4269

Rectangle

The Rectangle color scheme consists of four colors that form a rectangle on the color wheel.



46.6177, 43.9916, 43.5703



43.6208, 43.9916, 36.0129



37.3498, 43.9916, 52.5061



40.0553, 43.9916, 62.1499

Sweetspot

The Sweet Spot groups the original color and five complimentary colors.



46.6189, 43.9936, 43.5712



88.0551, 89.7010, 95.1899



50.2478, 45.4047, 64.5087



18.6917, 18.9706, 20.0692



0.0000, 0.0000, 0.0000



20.3446, 21.4041, 23.3091

Same Dimension

The Same Dimension uses a secret algorithm to generate beautiful new colors.



46.6189, 43.9936, 43.5712



72.1092, 66.2483, 63.8579



50.0256, 50.9561, 44.2470



11.2241, 11.2184, 11.7145



15.6973, 8.0895, 0.8589



0.8141, 0.4190, 0.0668

Inverse Universe

The Inverse Universe completely reimagines the original color for something new.



46.6189, 43.9936, 43.5712



72.1092, 66.2483, 63.8579



45.3310, 48.8633, 65.4355



11.2241, 11.2184, 11.7145



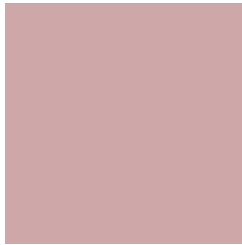
15.6973, 8.0895, 0.8589



0.8141, 0.4190, 0.0668

Previews

White Background



This preview shows how the XYZ color 46.6177, 43.9916, 43.5703 looks on a white background.

Color Contrast Check

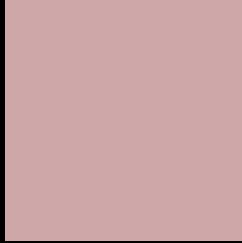
Large Text (above 18pt) WCAG AA × Fail

Any Text WCAG AA × Fail

Large Text (above 18pt) WCAG AAA × Fail

Any Text WCAG AAA × Fail

Black Background



This preview shows how the XYZ color 46.6177, 43.9916, 43.5703 looks on a black background.

Color Contrast Check

Large Text (above 18pt) WCAG AA ✓ Pass

Any Text WCAG AA ✓ Pass

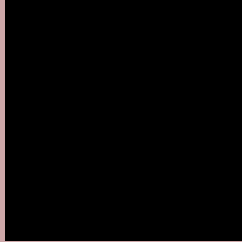
Large Text (above 18pt) WCAG AAA ✓ Pass

Any Text WCAG AAA ✓ Pass

If you want to check with other color combinations, try the [Color Contrast Checker](#).

XYZ 46.6177, 43.9916, 43.5703

Background



This preview shows how black text looks on a background with the XYZ color 46.6177, 43.9916, 43.5703.



This preview shows how white text looks on a background with the XYZ color 46.6177, 43.9916,

43.5703.

Color Blindness Simulation

Color vision deficiency is a very complex topic, and I could not describe the different causes any better than Wikipedia does, so if you want to learn more, you should check out their [article about color blindness](#).

Dichromacy



Original Color

46.6177, 43.9916, 43.5703

Protanopia

42.2214, 43.9304, 46.2985

Deuteranopia

44.9195, 43.9587, 43.1632



Tritanopia

47.5050, 43.7925, 48.5968

Trichromacy



Original Color

46.6177, 43.9916, 43.5703

Protanomaly

43.6252, 43.8128, 45.1872

Deuteranomaly

45.5300, 43.9941, 43.1378

Tritanomaly

47.2887, 43.9980, 46.5575

Monochromacy



Original Color

46.6177, 43.9916, 43.5703

Achromatopsia

42.8472, 45.0786, 49.0906

Achromatomaly

44.0541, 44.5739, 46.8392

CSS Examples

Text

The CSS property to change the color of the text to XYZ 46.6177, 43.9916, 43.5703 is called "color". The color property can be set on classes, ids or directly on the HTML element.

This example shows how text in the color `rgb(206, 168, 169)` looks like.

```
.text, #text, p{  
    color:rgb(206, 168, 169)  
}
```

If you want to add a text shadow in that color use the text-shadow property, you can generate a text shadow directly with our [CSS Text Shadow Generator](#).

Here you see how black text with a 4 pixel rgb(206, 168, 169) colored shadow looks like.

```
.shadow{ text-shadow: 4px 4px 2px rgb(206, 168, 169) }
```

Border

The CSS property to change the border of an element to XYZ 46.6177, 43.9916, 43.5703 is called "border". The border property can be set on classes, ids or directly on the HTML element.

This example shows the color as border, it can be applied via the CSS property "border" or "border-color".

```
.border, #border, table{ border:4px solid rgb(206, 168, 169) }
```


If only the border color should be changed use the property `border-color`.

```
.border{ border-color:rgb(206, 168, 169) }
```

If you want to add a box shadow in that color use:

Here you see how a box with a 4 pixel `rgb(206, 168, 169)` colored shadow looks like.

```
.boxshadow{ -moz-box-shadow:4px 4px 4px  
4px rgb(206, 168, 169); -webkit-box-  
shadow:4px 4px 4px 4px rgb(206, 168, 169);  
box-shadow:4px 4px 4px 4px rgb(206, 168,  
169) }
```

Background

The CSS property to change the background color of an element to XYZ 46.6177, 43.9916, 43.5703 is called "background". The background property can be set on classes, ids or directly on the HTML element.

```
.background, #background, body{  
background: rgb(206, 168, 169) }
```

If only the background color should be changed can be used:

```
.background{ background-color: rgb(206,  
168, 169) }
```

This example shows the color as background, it is applied via the CSS property "background".

To optimize and compress your CSS code, you can use our [online CSS compressor and optimizer](#) based on csstidy. If you want to create a linear or radial gradient as background or border, check our [CSS Gradient Generator](#).

Hey! You found this booklet interesting? Support Converting Colors with the new Membership Option!

The pro membership hides all ads, plus gives you double the colors in the color bucket, and more awesome pro features!

[Learn more, Memberships starting at \\$2.50/m!](#)

**Follow me
on Twitter!**

@ConvertingColor