

Converting Colors

XYZ(46.4671, 45.1536, 38.9258)

Have a look what the booklet for
XYZ(46.4671, 45.1536, 38.9258)
contains.

XYZ(46.4641, 45.1301, 39.0629)	3
<i>Conversions</i>	4
<i>Details</i>	6
<i>Harmonies</i>	12
<i>Previews</i>	24
<i>Color Blindness Simulation</i>	28
<i>CSS Examples</i>	31

Color

**XYZ(46.4641, 45.1301,
39.0629)**

Conversions

Conversions Part 1

Format	Color
Hex	CEAC9F
RGB	206, 172, 159
RGB Percent	81%, 67%, 62%
CMY	0.1922, 0.3255, 0.3765
CMYK	0.00, 0.17, 0.23, 0.19
HSL	17°, 32%, 72%
HSV	17°, 23%, 81%
XYZ	46.4641, 45.1301, 39.0629
YIQ	180.6840, 24.4370, 3.1650

Conversions

Conversions Part 2

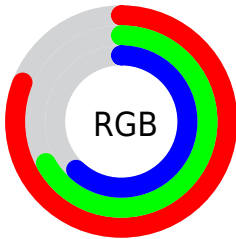
Format	Color
R _Y B	206, 177, 159
Decimal	13544607
CIE Lab	72.98, 10.36, 11.30
CIE LCh	73, 15.325, 47.490
Yxy	45.1301, 0.3556, 0.3454
Android (android.graphics.Color)	4291734687 (0xFFCEAC9F)
YUV	180.6840, -10.6902, 22.2021
Hunter-Lab	67.1789, 5.8958, 12.5496

Details

The XYZ color **46.4641, 45.1301, 39.0629** is a light color, and the websafe version is hex **CC9999**. A complement of this color would be **44.5080, 49.9655, 65.6912**, and the grayscale version is **43.7980, 46.0789, 50.1799**.

A 20% lighter version of the original color is **80.8467, 81.0532, 75.0021**, and **22.1857, 21.0950, 17.0898** is the 20% darker color. If you saturate the color by 10%, you get **42.1450, 39.1180, 29.5266**, and if you desaturate by 10%, it is **51.4016, 51.9015, 50.2762**.

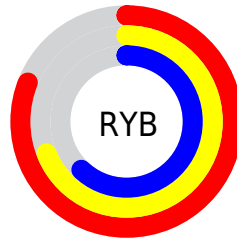
Distribution



Red (81%)

Green (67%)

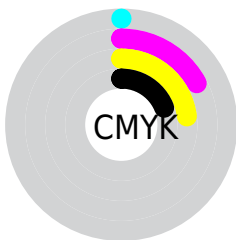
Blue (62%)



Red (81%)

Yellow (69%)

Blue (62%)

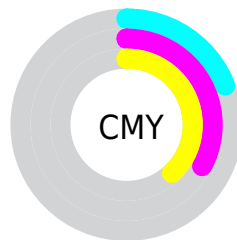


Cyan (0%)

Magenta (17%)

Yellow (23%)

Black (19%)



Cyan (19%)


Magenta (33%)

Yellow (38%)

Brightness & Saturation Gradients

These gradients show how the XYZ color 46.4641, 45.1301, 39.0629 changes by changing the brightness by 10 percent. The first figure shows a shift by +10% for each color and the second figure -10%.


Similar to the brightness gradients but the following saturation gradients show a change of the XYZ color 46.4641, 45.1301, 39.0629 by changing the saturation by 10% instead.


 46.4641, 45.1301,
39.0629

 46.4641, 45.1301,
39.0629


363.3561,
367.3002, 357.5918

 32.8184, 31.5599,
26.5005


 84.1368, 82.9156,
74.9558

 22.1459, 21.0256,
16.9693


 108.8944,
107.8997, 99.1233

 14.0814, 13.1427,
10.0509


138.0867,
137.4573, 127.9963

 8.2594, 7.5269,
5.3267

172.0791,
171.9726, 161.9933

 4.3145, 3.7937,
2.3781

211.2369,
211.8302, 201.5328

 1.8816, 1.5589,
0.7745

255.9254,

 0.5661, 0.3296,

257.4144, 247.0333

0.0000

306.5100,
309.1096, 298.9135

■ 0.0000, 0.0000,
0.0000

■ 46.4641, 45.1301,
39.0629

■ 46.4641, 45.1301,
39.0629

■ 42.1450, 39.1180,
29.5266

■ 51.4016, 51.9015,
50.2762

■ 38.4154, 33.8321,
21.5832

■ 56.9775, 59.4514,
63.2392

■ 35.2495, 29.2462,
15.1457

■ 63.2155, 67.8060,
78.0239

■ 32.6181, 25.3298,
10.1176

■ 70.1368, 76.9885,
94.6974

■ 30.4889, 22.0502,
6.3907

■ 76.6137, 86.5619,
107.2779

■ 28.8261, 19.3717,
3.8413

■ 79.2637, 91.8618,
108.1612

■ 27.5877, 17.2543,
2.3209

■ 26.9167, 16.0479,
1.6789

Harmonies

Analogous

The Analogous color harmony consists of three colors that are next to each other on the color wheel.



47.9885, 45.1301, 44.8446



46.4641, 45.1301, 39.0629



44.0183, 45.1301, 36.1185

Triad

The Triadic color harmony groups three colors that are evenly spaced from another and form a triangle on the color wheel.



46.4641, 45.1301, 39.0629



38.0680, 45.1301, 46.0176



44.4589, 45.1301, 64.5656

Complementary

The Complementary color scheme is a pair of colors which are on the opposite of each other on the color wheel.



46.4641, 45.1301, 39.0629



44.5080, 49.9655, 65.6912

Split Complementary

Split-complementary colors differ from the complementary color scheme. The scheme consists of three colors, the original color and two neighbors of the complement color.



41.7906, 45.1301, 64.9638



46.4641, 45.1301, 39.0629



38.1749, 45.1301, 53.6992

Square

The Square scheme is like the rectangle color scheme, but the four colors are evenly spaced on the color wheel.



46.4641, 45.1301, 39.0629



39.2148, 45.1301, 39.8445



39.5132, 45.1301, 60.8140



46.7981, 45.1301, 59.7769

Rectangle

The Rectangle color scheme consists of four colors that form a rectangle on the color wheel.



46.4641, 45.1301, 39.0629



42.2280, 45.1301, 35.9364



39.5132, 45.1301, 60.8140



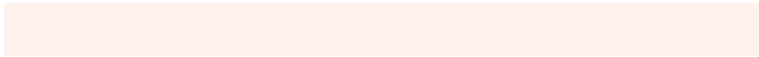
43.5686, 45.1301, 65.2339

Sweetspot

The Sweet Spot groups the original color and five complimentary colors.



46.4653, 45.1322, 39.0638



88.3266, 90.9404, 93.1337



47.5299, 41.7897, 56.2869



18.7868, 19.3043, 19.6582



0.0000, 0.0000, 0.0000



20.3446, 21.4041, 23.3091

Same Dimension

The Same Dimension uses a secret algorithm to generate beautiful new colors.



46.4653, 45.1322, 39.0638



71.9981, 68.5699, 55.9786



51.2345, 54.6705, 40.6536



11.4608, 11.7105, 11.7357



16.6451, 10.0232, 1.0574



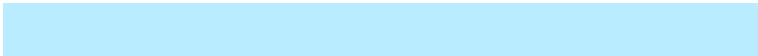
0.9235, 0.6467, 0.0762

Inverse Universe

The Inverse Universe completely reimagines the original color for something new.



44.5080, 49.9655, 65.6912



68.3172, 77.6400, 105.9931



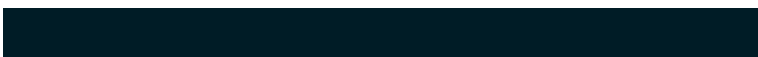
39.8076, 40.5646, 64.1243



11.2707, 12.1817, 14.3277



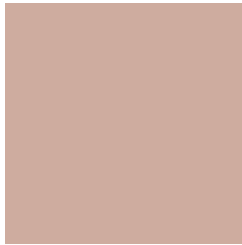
13.5631, 16.1502, 38.3587



0.7613, 0.9563, 1.9994

Previews

White Background



This preview shows how the XYZ color 46.4641, 45.1301, 39.0629 looks on a white background.

Color Contrast Check

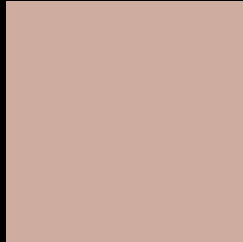
Large Text (above 18pt) WCAG AA × Fail

Any Text WCAG AA × Fail

Large Text (above 18pt) WCAG AAA × Fail

Any Text WCAG AAA × Fail

Black Background



This preview shows how the XYZ color 46.4641, 45.1301, 39.0629 looks on a black background.

Color Contrast Check

Large Text (above 18pt) WCAG AA ✓ Pass

Any Text WCAG AA ✓ Pass

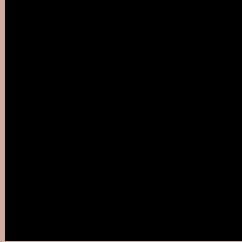
Large Text (above 18pt) WCAG AAA ✓ Pass

Any Text WCAG AAA ✓ Pass

If you want to check with other color combinations, try the [Color Contrast Checker](#).

XYZ 46.4641, 45.1301, 39.0629

Background



This preview shows how black text looks on a background with the XYZ color 46.4641, 45.1301, 39.0629.



This preview shows how white text looks on a background with the XYZ color 46.4641, 45.1301,

39.0629.

Color Blindness Simulation

Color vision deficiency is a very complex topic, and I could not describe the different causes any better than Wikipedia does, so if you want to learn more, you should check out their [article about color blindness](#).

Dichromacy



Original Color

46.4641, 45.1301, 39.0629

Protanopia

42.8914, 45.2879, 40.6632

Deuteranopia

46.1034, 45.2277, 39.1008



Tritanopia

48.9260, 45.3086, 50.4227

Trichromacy



Original Color

46.4641, 45.1301, 39.0629

Protanomaly

43.9507, 44.9613, 40.0802

Deuteranomaly

46.3784, 45.3695, 39.1137

Tritanomaly

48.0271, 45.2153, 46.2405

Monochromacy



Original Color

46.4641, 45.1301, 39.0629

Achromatopsia

43.9204, 46.2077, 50.3202

Achromatomaly

44.6984, 45.8051, 46.0206

CSS Examples

Text

The CSS property to change the color of the text to XYZ 46.4641, 45.1301, 39.0629 is called "color". The color property can be set on classes, ids or directly on the HTML element.

This example shows how text in the color `rgb(206, 172, 159)` looks like.

```
.text, #text, p{  
    color:rgb(206, 172, 159)  
}
```

If you want to add a text shadow in that color use the text-shadow property, you can generate a text shadow directly with our [CSS Text Shadow Generator](#).

Here you see how black text with a 4 pixel rgb(206, 172, 159) colored shadow looks like.

```
.shadow{ text-shadow: 4px 4px 2px rgb(206, 172, 159) }
```

Border

The CSS property to change the border of an element to XYZ 46.4641, 45.1301, 39.0629 is called "border". The border property can be set on classes, ids or directly on the HTML element.

This example shows the color as border, it can be applied via the CSS property "border" or "border-color".

```
.border, #border, table{ border:4px solid rgb(206, 172, 159) }
```


If only the border color should be changed use the property `border-color`.

```
.border{ border-color:rgb(206, 172, 159) }
```

If you want to add a box shadow in that color use:

Here you see how a box with a 4 pixel `rgb(206, 172, 159)` colored shadow looks like.

```
.boxshadow{ -moz-box-shadow:4px 4px 4px  
4px rgb(206, 172, 159); -webkit-box-  
shadow:4px 4px 4px 4px rgb(206, 172, 159);  
box-shadow:4px 4px 4px 4px rgb(206, 172,  
159) }
```

Background

The CSS property to change the background color of an element to XYZ 46.4641, 45.1301, 39.0629 is called "background". The background property can be set on classes, ids or directly on the HTML element.

```
.background, #background, body{  
background: rgb(206, 172, 159) }
```

If only the background color should be changed can be used:

```
.background{ background-color: rgb(206,  
172, 159) }
```

This example shows the color as background, it is applied via the CSS property "background".

To optimize and compress your CSS code, you can use our [online CSS compressor and optimizer](#) based on csstidy. If you want to create a linear or radial gradient as background or border, check our [CSS Gradient Generator](#).

Hey! You found this booklet interesting? Support Converting Colors with the new Membership Option!

The pro membership hides all ads, plus gives you double the colors in the color bucket, and more awesome pro features!

[Learn more, Memberships starting at \\$2.50/m!](#)

**Follow me
on Twitter!**

@ConvertingColor