

Converting Colors

XYZ(46.4728, 46.6270, 50.3361)

Have a look what the booklet for
XYZ(46.4728, 46.6270, 50.3361)
contains.

XYZ(46.5090, 46.6463, 50.2684)	3
<i>Conversions</i>	4
<i>Details</i>	6
<i>Harmonies</i>	12
<i>Previews</i>	24
<i>Color Blindness Simulation</i>	28
<i>CSS Examples</i>	31

Color

**XYZ(46.5090, 46.6463,
50.2684)**

Conversions

Conversions Part 1

Format	Color
Hex	C2B2B5
RGB	194, 178, 181
RGB Percent	76%, 70%, 71%
CMY	0.2392, 0.3019, 0.2902
CMYK	0.00, 0.08, 0.07, 0.24
HSL	349°, 12%, 73%
HSV	349°, 8%, 76%
XYZ	46.5090, 46.6463, 50.2684
YIQ	183.1260, 8.5730, 4.3250

Conversions

Conversions Part 2

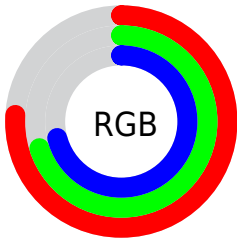
Format	Color
RYB	194, 178, 181
Decimal	12759733
CIELab	73.96, 6.23, 0.53
CIELCh	74, 6.257, 4.884
Yxy	46.6463, 0.3243, 0.3252
Android (android.graphics.Color)	4290949813 (0xFFC2B2B5)
YUV	183.1260, -1.0481, 9.5365
Hunter-Lab	68.2981, 2.0316, 4.1704

Details

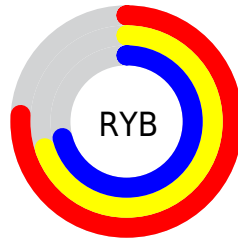
The XYZ color **46.5090, 46.6463, 50.2684** is a light color, and the websafe version is hex **CCCCCC**. A complement of this color would be **47.0576, 51.8113, 56.8131**, and the grayscale version is **45.0822, 47.4300, 51.6513**.

A 20% lighter version of the original color is **84.4925, 85.4693, 92.1648**, and **22.0451, 21.8012, 23.4682** is the 20% darker color. If you saturate the color by 10%, you get **41.3916, 38.8551, 41.0280**, and if you desaturate by 10%, it is **52.3580, 55.6066, 60.6571**.

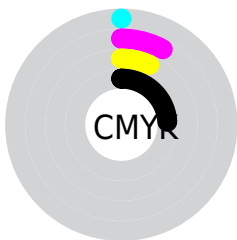
Distribution



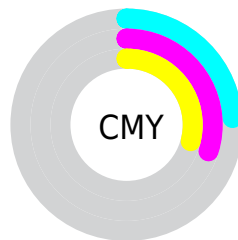
- Red (76%)
- Green (70%)
- Blue (71%)



- Red (76%)
- Yellow (70%)
- Blue (71%)



- Cyan (0%)
- Magenta (8%)
- Yellow (7%)
- Black (24%)



- Cyan (24%)
- Magenta (30%)
- Yellow (29%)

Brightness & Saturation Gradients

These gradients show how the XYZ color 46.5090, 46.6463, 50.2684 changes by changing the brightness by 10 percent. The first figure shows a shift by +10% for each color and the second figure -10%.

Similar to the brightness gradients but the following saturation gradients show a change of the XYZ color 46.5090, 46.6463, 50.2684 by changing the saturation by 10% instead.

■ 46.5090, 46.6463,
50.2684

■ 46.5090, 46.6463,
50.2684

363.5330,
373.4009, 404.4797

■ 32.8540, 32.7561,
35.2540

■ 84.2035, 85.1854,
91.9728

■ 22.1733, 21.9397,
23.5735

108.9736,
110.6032, 119.5000

■ 14.1016, 13.8126,
14.8083

138.1795,
140.6322, 152.0351

■ 8.2736, 7.9904,
8.5398

172.1866,
175.6570, 189.9968

■ 4.3238, 4.0888,
4.3496

211.3601,
216.0618, 233.8035

■ 1.8869, 1.7234,
1.8190

256.0654,

■ 0.5692, 0.4387,

262.2312, 283.8739

0.4405

306.6679,
314.5494, 340.6265

■ 0.0000, 0.0000,
0.0000

■ 46.5090, 46.6463,
50.2684

■ 46.5090, 46.6463,
50.2684

■ 41.3916, 38.8551,
41.0280

■ 52.3580, 55.6066,
60.6571

■ 36.9730, 32.1789,
32.8932

■ 58.9620, 65.7750,
72.2286

■ 33.2238, 26.5684,
25.8232

■ 66.3480, 77.1965,
85.0200

■ 30.1107, 21.9681,
19.7734

■ 74.3473, 89.5250,
99.0010

■ 27.5979, 18.3177,
14.6962

■ 76.0584, 90.2095,
108.0112

■ 25.6457, 15.5503,
10.5399

■ 24.2094, 13.5902,
7.2481

■ 23.2375, 12.3491,
4.7575

■ 22.6533, 11.6906,
2.9914

Harmonies

Analogous

The Analogous color harmony consists of three colors that are next to each other on the color wheel.



46.3078, 46.6463, 53.4439



46.5090, 46.6463, 50.2684



46.1200, 46.6463, 47.3549

Triad

The Triadic color harmony groups three colors that are evenly spaced from another and form a triangle on the color wheel.



46.5090, 46.6463, 50.2684



43.1197, 46.6463, 45.9125



43.4311, 46.6463, 56.5613

Complementary

The Complementary color scheme is a pair of colors which are on the opposite of each other on the color wheel.



46.5090, 46.6463, 50.2684



47.0576, 51.8113, 56.8131

Split Complementary

Split-complementary colors differ from the complementary color scheme. The scheme consists of three colors, the original color and two neighbors of the complement color.



42.5985, 46.6463, 54.3871



46.5090, 46.6463, 50.2684



42.4208, 46.6463, 48.2252

Square

The Square scheme is like the rectangle color scheme, but the four colors are evenly spaced on the color wheel.



46.5090, 46.6463, 50.2684



44.1534, 46.6463, 44.9082



42.2316, 46.6463, 51.3150



44.5189, 46.6463, 57.1639

Rectangle

The Rectangle color scheme consists of four colors that form a rectangle on the color wheel.



46.5090, 46.6463, 50.2684



45.5821, 46.6463, 45.9259



42.2316, 46.6463, 51.3150



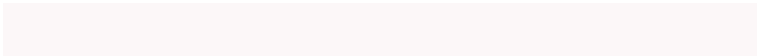
43.1127, 46.6463, 55.9857

Sweetspot

The Sweet Spot groups the original color and five complimentary colors.



46.5103, 46.6483, 50.2694



90.6887, 94.3455, 102.5200



47.0950, 46.7884, 57.5884



19.8834, 20.6967, 22.4925



0.0000, 0.0000, 0.0000



20.3446, 21.4041, 23.3091

Same Dimension

The Same Dimension uses a secret algorithm to generate beautiful new colors.



46.5103, 46.6483, 50.2694



82.3894, 81.6524, 87.7130



47.1777, 48.4700, 48.9910



10.1486, 10.1080, 10.8729



14.8631, 7.6350, 1.9250



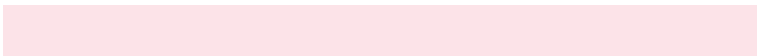
0.6660, 0.3394, 0.2087

Inverse Universe

The Inverse Universe completely reimagines the original color for something new.



46.5103, 46.6483, 50.2694



82.3894, 81.6524, 87.7130



46.3400, 49.8428, 58.2177



10.1486, 10.1080, 10.8729



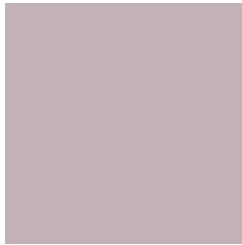
14.8631, 7.6350, 1.9250



0.6660, 0.3394, 0.2087

Previews

White Background



This preview shows how the XYZ color 46.5090, 46.6463, 50.2684 looks on a white background.

Color Contrast Check

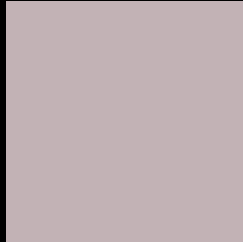
Large Text (above 18pt) WCAG AA × Fail

Any Text WCAG AA × Fail

Large Text (above 18pt) WCAG AAA × Fail

Any Text WCAG AAA × Fail

Black Background



This preview shows how the XYZ color 46.5090, 46.6463, 50.2684 looks on a black background.

Color Contrast Check

Large Text (above 18pt) WCAG AA ✓ Pass

Any Text WCAG AA ✓ Pass

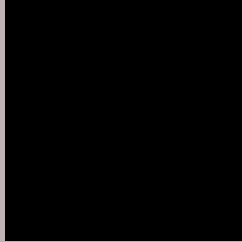
Large Text (above 18pt) WCAG AAA ✓ Pass

Any Text WCAG AAA ✓ Pass

If you want to check with other color combinations, try the [Color Contrast Checker](#).

XYZ 46.5090, 46.6463, 50.2684

Background



This preview shows how black text looks on a background with the XYZ color 46.5090, 46.6463, 50.2684.



This preview shows how white text looks on a background with the XYZ color 46.5090, 46.6463,

Color Blindness Simulation

Color vision deficiency is a very complex topic, and I could not describe the different causes any better than Wikipedia does, so if you want to learn more, you should check out their [article about color blindness](#).

Dichromacy



Original Color

46.5090, 46.6463, 50.2684

Protanopia

45.0787, 46.7809, 51.4535

Deuteranopia

47.4190, 46.5290, 50.1978



Tritanopia

47.5221, 46.7641, 55.2369

Trichromacy



Original Color

46.5090, 46.6463, 50.2684

Protanomaly

45.5038, 46.7113, 50.8738

Deuteranomaly

47.0886, 46.6508, 50.2387

Tritanomaly

47.1975, 46.6342, 53.5274

Monochromacy



Original Color

46.5090, 46.6463, 50.2684

Achromatopsia

45.0092, 47.3531, 51.5676

Achromatomaly

45.4609, 46.9899, 50.9299

CSS Examples

Text

The CSS property to change the color of the text to XYZ 46.5090, 46.6463, 50.2684 is called "color". The color property can be set on classes, ids or directly on the HTML element.

This example shows how text in the color `rgb(194, 178, 181)` looks like.

```
.text, #text, p{  
    color:rgb(194, 178, 181)  
}
```

If you want to add a text shadow in that color use the text-shadow property, you can generate a text shadow directly with our [CSS Text Shadow Generator](#).

Here you see how black text with a 4 pixel rgb(194, 178, 181) colored shadow looks like.

```
.shadow{ text-shadow: 4px 4px 2px rgb(194, 178, 181) }
```

Border

The CSS property to change the border of an element to XYZ 46.5090, 46.6463, 50.2684 is called "border". The border property can be set on classes, ids or directly on the HTML element.

This example shows the color as border, it can be applied via the CSS property "border" or "border-color".

```
.border, #border, table{ border:4px solid rgb(194, 178, 181) }
```


If only the border color should be changed use the property `border-color`.

```
.border{ border-color:rgb(194, 178, 181) }
```

If you want to add a box shadow in that color use:

Here you see how a box with a 4 pixel `rgb(194, 178, 181)` colored shadow looks like.

```
.boxshadow{ -moz-box-shadow:4px 4px 4px  
4px rgb(194, 178, 181); -webkit-box-  
shadow:4px 4px 4px 4px rgb(194, 178, 181);  
box-shadow:4px 4px 4px 4px rgb(194, 178,  
181) }
```

Background

The CSS property to change the background color of an element to XYZ 46.5090, 46.6463, 50.2684 is called "background". The background property can be set on classes, ids or directly on the HTML element.

```
.background, #background, body{  
background: rgb(194, 178, 181) }
```

If only the background color should be changed can be used:

```
.background{ background-color: rgb(194,  
178, 181) }
```

This example shows the color as background, it is applied via the CSS property "background".

To optimize and compress your CSS code, you can use our [online CSS compressor and optimizer](#) based on csstidy. If you want to create a linear or radial gradient as background or border, check our [CSS Gradient Generator](#).

Hey! You found this booklet interesting? Support Converting Colors with the new Membership Option!

The pro membership hides all ads, plus gives you double the colors in the color bucket, and more awesome pro features!

[Learn more, Memberships starting at \\$2.50/m!](#)

**Follow me
on Twitter!**

@ConvertingColor