

Converting Colors

XYZ(46.5053, 46.1564, 46.5205)

Have a look what the booklet for
XYZ(46.5053, 46.1564, 46.5205)
contains.

XYZ(46.4540, 46.1124, 46.4966)	3
<i>Conversions</i>	4
<i>Details</i>	6
<i>Harmonies</i>	12
<i>Previews</i>	24
<i>Color Blindness Simulation</i>	28
<i>CSS Examples</i>	31

Color

**XYZ(46.4540, 46.1124,
46.4966)**

Conversions

Conversions Part 1

Format	Color
Hex	C6B0AE
RGB	198, 176, 174
RGB Percent	78%, 69%, 68%
CMY	0.2235, 0.3098, 0.3176
CMYK	0.00, 0.11, 0.12, 0.22
HSL	5°, 17%, 73%
HSV	5°, 12%, 78%
XYZ	46.4540, 46.1124, 46.4966
YIQ	182.3500, 13.7540, 4.0420

Conversions

Conversions Part 2

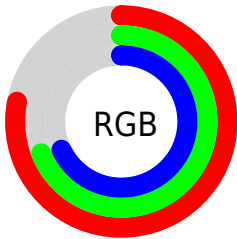
Format	Color
RYB	198, 176, 174
Decimal	13021358
CIELab	73.62, 7.56, 3.91
CIElCh	74, 8.513, 27.308
Yxy	46.1124, 0.3341, 0.3316
Android (android.graphics.Color)	4291211438 (0xFFC6B0AE)
YUV	182.3500, -4.1166, 13.7250
Hunter-Lab	67.9061, 3.2747, 6.9373

Details

The XYZ color **46.4540, 46.1124, 46.4966** is a light color, and the websafe version is hex **CCCCCC**. A complement of this color would be **47.3883, 52.5547, 61.0730**, and the grayscale version is **44.6717, 46.9981, 51.1810**.

A 20% lighter version of the original color is **84.2395, 84.6304, 86.0241**, and **22.2221, 21.7497, 21.4392** is the 20% darker color. If you saturate the color by 10%, you get **41.3410, 38.7508, 35.9605**, and if you desaturate by 10%, it is **52.3298, 54.5432, 58.6919**.

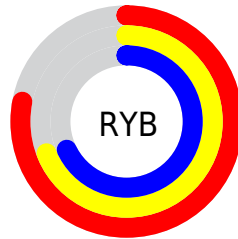
Distribution



Red (78%)

Green (69%)

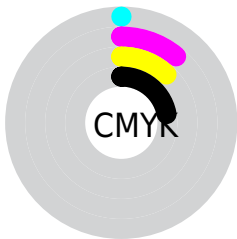
Blue (68%)



Red (78%)

Yellow (69%)

Blue (68%)

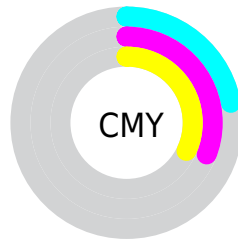


Cyan (0%)

Magenta (11%)

Yellow (12%)

Black (22%)



Cyan (22%)


Magenta (31%)


Yellow (32%)

Brightness & Saturation Gradients


These gradients show how the XYZ color 46.4540, 46.1124, 46.4966 changes by changing the brightness by 10 percent. The first figure shows a shift by +10% for each color and the second figure -10%.


Similar to the brightness gradients but the following saturation gradients show a change of the XYZ color 46.4540, 46.1124, 46.4966 by changing the saturation by 10% instead.


 46.4540, 46.1124,
46.4966

 46.4540, 46.1124,
46.4966


363.3163,
371.2604, 389.1370

 32.8104, 32.3345,
32.2864


 84.1218, 84.3872,
86.3038

 22.1398, 21.6171,
21.3137


108.8766,
109.6529, 112.7379

 14.0768, 13.5759,
13.1600


138.0659,
139.5167, 144.0837

 8.2562, 7.8263,
7.4068

172.0549,
174.3629, 180.7597

 4.3125, 3.9840,
3.6355

211.2092,
214.5760, 223.1845

 1.8804, 1.6646,
1.4276

255.8939,

 0.5654, 0.4006,

260.5403, 271.7766

0.1631

306.4745,
312.6403, 326.9546

■ 0.0000, 0.0000,
0.0000

■ 46.4540, 46.1124,
46.4966

■ 46.4540, 46.1124,
46.4966

■ 41.3410, 38.7508,
35.9605

■ 52.3298, 54.5432,
58.6919

■ 36.9558, 32.4100,
27.0092

■ 58.9940, 64.0772,
72.6106

■ 33.2665, 27.0465,
19.5667

■ 66.4755, 74.7544,
88.3173

■ 30.2372, 22.6119,
13.5500

■ 74.8008, 86.6109,
105.8721

■ 27.8286, 19.0533,
8.8677

■ 77.0989, 90.7459,
108.0599

■ 25.9977, 16.3124,
5.4181

■ 24.6955, 14.3241,
3.0847

■ 23.8650, 13.0131,
1.7287

■ 23.4821, 12.3923,
1.1543

Harmonies

Analogous

The Analogous color harmony consists of three colors that are next to each other on the color wheel.



46.7872, 46.1124, 50.5993



46.4540, 46.1124, 46.4966



45.4123, 46.1124, 43.5431

Triad

The Triadic color harmony groups three colors that are evenly spaced from another and form a triangle on the color wheel.



46.4540, 46.1124, 46.4966



41.4347, 46.1124, 45.8582



43.6925, 46.1124, 58.9630

Complementary

The Complementary color scheme is a pair of colors which are on the opposite of each other on the color wheel.



46.4540, 46.1124, 46.4966



47.3883, 52.5547, 61.0730

Split Complementary

Split-complementary colors differ from the complementary color scheme. The scheme consists of three colors, the original color and two neighbors of the complement color.



42.2819, 46.1124, 57.5217



46.4540, 46.1124, 46.4966



40.9972, 46.1124, 49.8199

Square

The Square scheme is like the rectangle color scheme, but the four colors are evenly spaced on the color wheel.



46.4540, 46.1124, 46.4966



42.5124, 46.1124, 43.1896



41.3037, 46.1124, 54.1130



45.1714, 46.1124, 57.9495

Rectangle

The Rectangle color scheme consists of four colors that form a rectangle on the color wheel.



46.4540, 46.1124, 46.4966



44.4682, 46.1124, 42.5398



41.3037, 46.1124, 54.1130



43.1949, 46.1124, 58.7477

Sweetspot

The Sweet Spot groups the original color and five complimentary colors.



46.4553, 46.1144, 46.4976



90.5408, 93.5401, 99.5092



48.3891, 46.2640, 58.6045



19.2034, 19.7691, 20.9331



0.0000, 0.0000, 0.0000



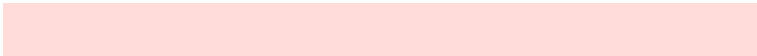
20.3446, 21.4041, 23.3091

Same Dimension

The Same Dimension uses a secret algorithm to generate beautiful new colors.



46.4553, 46.1144, 46.4976



79.3101, 77.4133, 76.2374



48.9124, 51.0288, 47.3166



10.7039, 10.7769, 11.0787



15.2973, 8.1117, 0.7595



0.7495, 0.4344, 0.0443

Inverse Universe

The Inverse Universe completely reimagines the original color for something new.



47.3883, 52.5547, 61.0730



81.3408, 91.4330, 107.9690



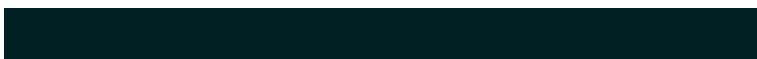
44.7897, 47.3575, 60.2068



10.8681, 11.9102, 13.6436



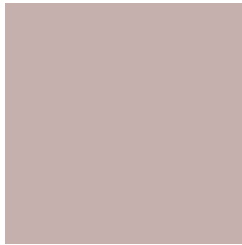
17.4676, 24.3292, 38.5197



0.8500, 1.1978, 1.8315

Previews

White Background



This preview shows how the XYZ color 46.4540, 46.1124, 46.4966 looks on a white background.

Color Contrast Check

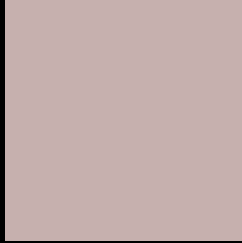
Large Text (above 18pt) WCAG AA × Fail

Any Text WCAG AA × Fail

Large Text (above 18pt) WCAG AAA × Fail

Any Text WCAG AAA × Fail

Black Background



This preview shows how the XYZ color 46.4540, 46.1124, 46.4966 looks on a black background.

Color Contrast Check

Large Text (above 18pt) WCAG AA ✓ Pass

Any Text WCAG AA ✓ Pass

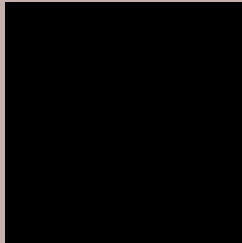
Large Text (above 18pt) WCAG AAA ✓ Pass

Any Text WCAG AAA ✓ Pass

If you want to check with other color combinations, try the [Color Contrast Checker](#).

XYZ 46.4540, 46.1124, 46.4966

Background



This preview shows how black text looks on a background with the XYZ color 46.4540, 46.1124, 46.4966.



This preview shows how white text looks on a background with the XYZ color 46.4540, 46.1124,

Color Blindness Simulation

Color vision deficiency is a very complex topic, and I could not describe the different causes any better than Wikipedia does, so if you want to learn more, you should check out their [article about color blindness](#).

Dichromacy



Original Color

46.4540, 46.1124, 46.4966

Protanopia

44.1653, 46.0914, 47.6431

Deuteranopia

47.0573, 46.1334, 46.4689



Tritanopia

48.0326, 46.1823, 53.9594

Trichromacy



Original Color

46.4540, 46.1124, 46.4966

Protanomaly

45.0932, 46.2825, 47.1142

Deuteranomaly

46.7894, 45.9953, 46.4563

Tritanomaly

47.4304, 46.2210, 51.2214

Monochromacy



Original Color

46.4540, 46.1124, 46.4966

Achromatopsia

44.4628, 46.7784, 50.9417

Achromatomaly

45.1970, 46.5886, 49.2582

CSS Examples

Text

The CSS property to change the color of the text to XYZ 46.4540, 46.1124, 46.4966 is called "color". The color property can be set on classes, ids or directly on the HTML element.

This example shows how text in the color `rgb(198, 176, 174)` looks like.

```
.text, #text, p{  
    color:rgb(198, 176, 174)  
}
```

If you want to add a text shadow in that color use the text-shadow property, you can generate a text shadow directly with our [CSS Text Shadow Generator](#).

Here you see how black text with a 4 pixel rgb(198, 176, 174) colored shadow looks like.

```
.shadow{ text-shadow: 4px 4px 2px rgb(198, 176, 174) }
```

Border

The CSS property to change the border of an element to XYZ 46.4540, 46.1124, 46.4966 is called "border". The border property can be set on classes, ids or directly on the HTML element.

This example shows the color as border, it can be applied via the CSS property "border" or "border-color".

```
.border, #border, table{ border:4px solid rgb(198, 176, 174) }
```


If only the border color should be changed use the property `border-color`.

```
.border{ border-color:rgb(198, 176, 174) }
```

If you want to add a box shadow in that color use:

Here you see how a box with a 4 pixel `rgb(198, 176, 174)` colored shadow looks like.

```
.boxshadow{ -moz-box-shadow:4px 4px 4px  
4px rgb(198, 176, 174); -webkit-box-  
shadow:4px 4px 4px 4px rgb(198, 176, 174);  
box-shadow:4px 4px 4px 4px rgb(198, 176,  
174) }
```

Background

The CSS property to change the background color of an element to XYZ 46.4540, 46.1124, 46.4966 is called "background". The background property can be set on classes, ids or directly on the HTML element.

```
.background, #background, body{  
background: rgb(198, 176, 174) }
```

If only the background color should be changed can be used:

```
.background{ background-color: rgb(198,  
176, 174) }
```

This example shows the color as background, it is applied via the CSS property "background".

To optimize and compress your CSS code, you can use our [online CSS compressor and optimizer](#) based on csstidy. If you want to create a linear or radial gradient as background or border, check our [CSS Gradient Generator](#).

Hey! You found this booklet interesting? Support Converting Colors with the new Membership Option!

The pro membership hides all ads, plus gives you double the colors in the color bucket, and more awesome pro features!

[Learn more, Memberships starting at \\$2.50/m!](#)

**Follow me
on Twitter!**

@ConvertingColor