

Converting Colors

XYZ(46.5175, 46.3325, 51.2911)

Have a look what the booklet for
XYZ(46.5175, 46.3325, 51.2911)
contains.

XYZ(46.5175, 46.3325, 51.2911)	3
<i>Conversions</i>	4
<i>Details</i>	6
<i>Harmonies</i>	12
<i>Previews</i>	24
<i>Color Blindness Simulation</i>	28
<i>CSS Examples</i>	31

Color

**XYZ(46.5175, 46.3325,
51.2911)**

Conversions

Conversions Part 1

Format	Color
Hex	C2B1B7
RGB	194, 177, 183
RGB Percent	76%, 69%, 72%
CMY	0.2392, 0.3059, 0.2823
CMYK	0.00, 0.09, 0.06, 0.24
HSL	339°, 12%, 73%
HSV	339°, 9%, 76%
XYZ	46.5175, 46.3325, 51.2911
YIQ	182.7670, 8.2060, 5.4700

Conversions

Conversions Part 2

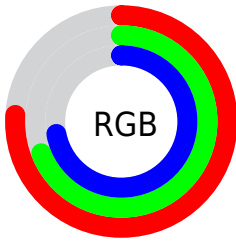
Format	Color
RYB	194, 177, 183
Decimal	12759479
CIELab	73.76, 7.13, -0.86
CIELCh	74, 7.181, 353.145
Yxy	46.3325, 0.3227, 0.3214
Android (android.graphics.Color)	4290949559 (0xFFC2B1B7)
YUV	182.7670, 0.1149, 9.8513
Hunter-Lab	68.0680, 2.8675, 2.9709

Details

The XYZ color **46.5175, 46.3325, 51.2911** is a light color, and the websafe version is hex **CCCCCC**. A complement of this color would be **46.5021, 51.5627, 55.0811**, and the grayscale version is **44.8794, 47.2167, 51.4189**.

A 20% lighter version of the original color is **84.5026, 85.0191, 93.6179**, and **22.0521, 21.6025, 24.1265** is the 20% darker color. If you saturate the color by 10%, you get **41.7059, 38.7077, 43.5249**, and if you desaturate by 10%, it is **51.9931, 55.0975, 59.8549**.

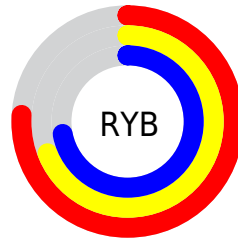
Distribution



Red (76%)

Green (69%)

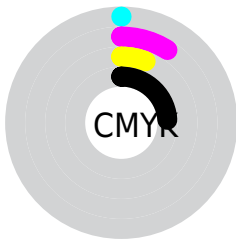
Blue (72%)



Red (76%)

Yellow (69%)

Blue (72%)

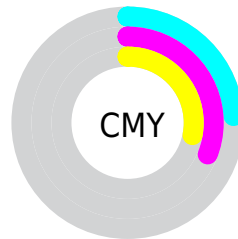


Cyan (0%)

Magenta (9%)

Yellow (6%)

Black (24%)



Cyan (24%)

Magenta (31%)

Yellow (28%)

Brightness & Saturation Gradients

These gradients show how the XYZ color 46.5175, 46.3325, 51.2911 changes by changing the brightness by 10 percent. The first figure shows a shift by +10% for each color and the second figure -10%.

Similar to the brightness gradients but the following saturation gradients show a change of the XYZ color 46.5175, 46.3325, 51.2911 by changing the saturation by 10% instead.

■ 46.5175, 46.3325,
51.2911

■ 46.5175, 46.3325,
51.2911

363.5664,
372.1438, 408.5725

■ 32.8607, 32.5083,
36.0620

■ 84.2161, 84.7164,
93.5008

■ 22.1785, 21.7500,
24.1920

108.9886,
110.0449, 121.3185

■ 14.1055, 13.6733,
15.2626

138.1971,
139.9769, 154.1695

■ 8.2762, 7.8938,
8.8552

172.2069,
174.8968, 192.4723

■ 4.3255, 4.0271,
4.5513

211.3834,
215.1891, 236.6455

■ 1.8879, 1.6887,
1.9324

256.0919,

■ 0.5698, 0.4163,

261.2381, 287.1075

0.5133

306.6978,
313.4282, 344.2770

■ 0.0000, 0.0000,
0.0000

■ 46.5175, 46.3325,
51.2911

■ 46.5175, 46.3325,
51.2911

■ 41.7059, 38.7077,
43.5249

■ 51.9931, 55.0975,
59.8549

■ 37.5284, 32.1700,
36.5299

■ 58.1532, 65.0408,
69.2359

■ 33.9587, 26.6713,
30.2820

■ 65.0223, 76.2063,
79.4567

■ 30.9671, 22.1573,
24.7553

■ 72.6223, 88.6336,
90.5381

■ 28.5212, 18.5689,
19.9217

■ 74.6089, 89.6297,
100.3782

■ 26.5853, 15.8405,
15.7515

■ 76.0584, 90.2095,
108.0112

■ 25.1191, 13.8978,
12.2122

■ 24.0759, 12.6535,
9.2679

■ 23.3801, 11.9639,
6.8719

Harmonies

Analogous

The Analogous color harmony consists of three colors that are next to each other on the color wheel.



46.0291, 46.3325, 54.7789



46.5175, 46.3325, 51.2911



46.3312, 46.3325, 47.7378

Triad

The Triadic color harmony groups three colors that are evenly spaced from another and form a triangle on the color wheel.



46.5175, 46.3325, 51.2911



43.0808, 46.3325, 44.2621



42.5831, 46.3325, 56.2790

Complementary

The Complementary color scheme is a pair of colors which are on the opposite of each other on the color wheel.



46.5175, 46.3325, 51.2911



46.5021, 51.5627, 55.0811

Split Complementary

Split-complementary colors differ from the complementary color scheme. The scheme consists of three colors, the original color and two neighbors of the complement color.



41.8211, 46.3325, 53.2593



46.5175, 46.3325, 51.2911



42.1045, 46.3325, 46.3520

Square

The Square scheme is like the rectangle color scheme, but the four colors are evenly spaced on the color wheel.



46.5175, 46.3325, 51.2911



44.3310, 46.3325, 43.7917



41.6475, 46.3325, 49.6146



43.7456, 46.3325, 57.7472

Rectangle

The Rectangle color scheme consists of four colors that form a rectangle on the color wheel.



46.5175, 46.3325, 51.2911



45.8512, 46.3325, 45.7963



41.6475, 46.3325, 49.6146



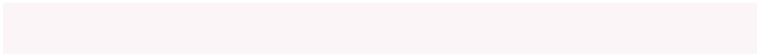
42.2726, 46.3325, 55.4049

Sweetspot

The Sweet Spot groups the original color and five complimentary colors.



46.5188, 46.3345, 51.2921



89.7964, 92.7590, 101.6117



46.1429, 46.0032, 57.4870



19.4865, 20.0283, 21.9738



0.0000, 0.0000, 0.0000



20.3446, 21.4041, 23.3091

Same Dimension

The Same Dimension uses a secret algorithm to generate beautiful new colors.



46.5188, 46.3345, 51.2921



82.0671, 80.4254, 89.4008



46.3591, 46.9928, 48.2245



10.2167, 10.1353, 11.2316



15.3581, 7.8330, 4.5317



0.6965, 0.3516, 0.3693

Inverse Universe

The Inverse Universe completely reimagines the original color for something new.



46.5188, 46.3345, 51.2921



82.0671, 80.4254, 89.4008



46.6617, 50.8256, 58.3905



10.2167, 10.1353, 11.2316



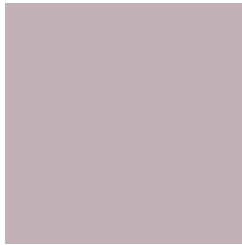
15.3581, 7.8330, 4.5317



0.6965, 0.3516, 0.3693

Previews

White Background



This preview shows how the XYZ color 46.5175, 46.3325, 51.2911 looks on a white background.

Color Contrast Check

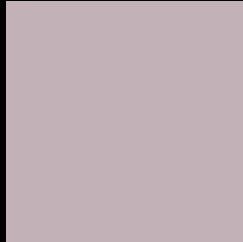
Large Text (above 18pt) WCAG AA × Fail

Any Text WCAG AA × Fail

Large Text (above 18pt) WCAG AAA × Fail

Any Text WCAG AAA × Fail

Black Background



This preview shows how the XYZ color 46.5175, 46.3325, 51.2911 looks on a black background.

Color Contrast Check

Large Text (above 18pt) WCAG AA ✓ Pass

Any Text WCAG AA ✓ Pass

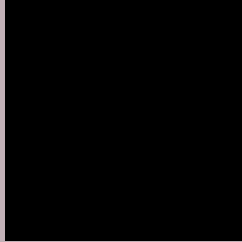
Large Text (above 18pt) WCAG AAA ✓ Pass

Any Text WCAG AAA ✓ Pass

If you want to check with other color combinations, try the [Color Contrast Checker](#).

XYZ 46.5175, 46.3325, 51.2911

Background



This preview shows how black text looks on a background with the XYZ color 46.5175, 46.3325, 51.2911.



This preview shows how white text looks on a background with the XYZ color 46.5175, 46.3325,

Color Blindness Simulation

Color vision deficiency is a very complex topic, and I could not describe the different causes any better than Wikipedia does, so if you want to learn more, you should check out their [article about color blindness](#).

Dichromacy



Original Color

46.5175, 46.3325, 51.2911

Protanopia

44.6067, 46.2126, 52.4678

Deuteranopia

47.3613, 46.4753, 51.2742



Tritanopia

47.3253, 46.3705, 55.1713

Trichromacy



Original Color

46.5175, 46.3325, 51.2911

Protanomaly

45.2653, 46.2657, 51.8918

Deuteranomaly

47.0985, 46.3399, 51.2619

Tritanomaly

47.0007, 46.2406, 53.4618

Monochromacy



Original Color

46.5175, 46.3325, 51.2911

Achromatopsia

45.0092, 47.3531, 51.5676

Achromatomaly

45.5646, 47.0314, 51.4762

CSS Examples

Text

The CSS property to change the color of the text to XYZ 46.5175, 46.3325, 51.2911 is called "color". The color property can be set on classes, ids or directly on the HTML element.

This example shows how text in the color `rgb(194, 177, 183)` looks like.

```
.text, #text, p{  
    color:rgb(194, 177, 183)  
}
```

If you want to add a text shadow in that color use the text-shadow property, you can generate a text shadow directly with our [CSS Text Shadow Generator](#).

Here you see how black text with a 4 pixel rgb(194, 177, 183) colored shadow looks like.

```
.shadow{ text-shadow: 4px 4px 2px rgb(194, 177, 183) }
```

Border

The CSS property to change the border of an element to XYZ 46.5175, 46.3325, 51.2911 is called "border". The border property can be set on classes, ids or directly on the HTML element.

This example shows the color as border, it can be applied via the CSS property "border" or "border-color".

```
.border, #border, table{ border:4px solid rgb(194, 177, 183) }
```


If only the border color should be changed use the property `border-color`.

```
.border{ border-color:rgb(194, 177, 183) }
```

If you want to add a box shadow in that color use:

Here you see how a box with a 4 pixel `rgb(194, 177, 183)` colored shadow looks like.

```
.boxshadow{ -moz-box-shadow:4px 4px 4px  
4px rgb(194, 177, 183); -webkit-box-  
shadow:4px 4px 4px 4px rgb(194, 177, 183);  
box-shadow:4px 4px 4px 4px rgb(194, 177,  
183) }
```

Background

The CSS property to change the background color of an element to XYZ 46.5175, 46.3325, 51.2911 is called "background". The background property can be set on classes, ids or directly on the HTML element.

```
.background, #background, body{  
background: rgb(194, 177, 183) }
```

If only the background color should be changed can be used:

```
.background{ background-color: rgb(194,  
177, 183) }
```

This example shows the color as background, it is applied via the CSS property "background".

To optimize and compress your CSS code, you can use our [online CSS compressor and optimizer](#) based on csstidy. If you want to create a linear or radial gradient as background or border, check our [CSS Gradient Generator](#).

Hey! You found this booklet interesting? Support Converting Colors with the new Membership Option!

The pro membership hides all ads, plus gives you double the colors in the color bucket, and more awesome pro features!

[Learn more, Memberships starting at \\$2.50/m!](#)

**Follow me
on Twitter!**

@ConvertingColor