

Converting Colors

XYZ(46.5189, 47.9424, 46.3372)

Have a look what the booklet for
XYZ(46.5189, 47.9424, 46.3372)
contains.

XYZ(46.5189, 47.9424, 46.3372)	3
<i>Conversions</i>	4
<i>Details</i>	6
<i>Harmonies</i>	12
<i>Previews</i>	24
<i>Color Blindness Simulation</i>	28
<i>CSS Examples</i>	31

Color

**XYZ(46.5189, 47.9424,
46.3372)**

Conversions

Conversions Part 1

Format	Color
Hex	C2B6AD
RGB	194, 182, 173
RGB Percent	76%, 71%, 68%
CMY	0.2392, 0.2863, 0.3216
CMYK	0.00, 0.06, 0.11, 0.24
HSL	26°, 15%, 72%
HSV	26°, 11%, 76%
XYZ	46.5189, 47.9424, 46.3372
YIQ	184.5620, 10.0410, -0.2550

Conversions

Conversions Part 2

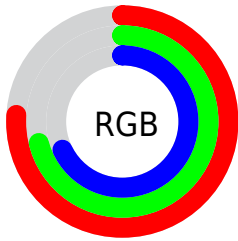
Format	Color
RYB	194, 189, 173
Decimal	12760749
CIELab	74.79, 2.70, 6.10
CIELCh	75, 6.668, 66.079
Yxy	47.9424, 0.3304, 0.3405
Android (android.graphics.Color)	4290950829 (0xFFC2B6AD)
YUV	184.5620, -5.7001, 8.2771
Hunter-Lab	69.2405, -1.2463, 8.7902

Details

The XYZ color **46.5189, 47.9424, 46.3372** is a light color, and the websafe version is hex **CCCCCC**. A complement of this color would be **44.3200, 47.4762, 57.8672**, and the grayscale version is **45.8987, 48.2890, 52.5868**.

A 20% lighter version of the original color is **84.3618, 87.2597, 85.7953**, and **22.1167, 22.6564, 21.2966** is the 20% darker color. If you saturate the color by 10%, you get **42.5962, 42.8859, 36.4308**, and if you desaturate by 10%, it is **50.8965, 53.4715, 57.7412**.

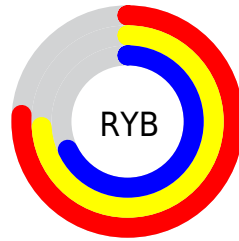
Distribution



Red (76%)

Green (71%)

Blue (68%)



Red (76%)

Yellow (74%)

Blue (68%)

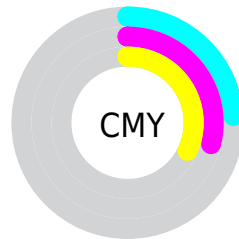


Cyan (0%)

Magenta (6%)

Yellow (11%)

Black (24%)



Cyan (24%)

Magenta (29%)

Yellow (32%)

Brightness & Saturation Gradients

These gradients show how the XYZ color 46.5189, 47.9424, 46.3372 changes by changing the brightness by 10 percent. The first figure shows a shift by +10% for each color and the second figure -10%.

Similar to the brightness gradients but the following saturation gradients show a change of the XYZ color 46.5189, 47.9424, 46.3372 by changing the saturation by 10% instead.

■ 46.5189, 47.9424,
46.3372

■ 46.5189, 47.9424,
46.3372

363.5720,
378.5638, 388.4795

■ 32.8618, 33.7813,
32.1614

■ 84.2182, 87.1186,
86.0630

■ 22.1794, 22.7256,
21.2190

108.9911,
112.9025, 112.4501

■ 14.1061, 14.3910,
13.0914

138.2000,
143.3295, 143.7447

■ 8.2767, 8.3931,
7.3600

172.2103,
178.7839, 180.3654

■ 4.3258, 4.3475,
3.6064

211.3872,
219.6501, 222.7307

■ 1.8880, 1.8698,
1.4120

256.0963,

■ 0.5699, 0.5301,

266.3126, 271.2591

0.1511

306.7027,
319.1557, 326.3692

0.0000, 0.0000,
0.0000

46.5189, 47.9424,
46.3372

46.5189, 47.9424,
46.3372

42.5962, 42.8859,
36.4308

50.8965, 53.4715,
57.7412

39.1086, 38.2826,
27.9560

55.7401, 59.4792,
70.6990

36.0406, 34.1211,
20.8462

61.0652, 65.9795,
85.2675

33.3742, 30.3871,
15.0286

66.8854, 72.9838,
101.5000

31.0898, 27.0652,
10.4232

70.7031, 79.4990,
106.2261

■ 29.1661, 24.1393,
6.9410

■ 74.0191, 86.1311,
107.3315

■ 27.5790, 21.5915,
4.4809

■ 76.0583, 90.2094,
108.0112

■ 26.3007, 19.4022,
2.9226

■ 25.3552, 17.6832,
2.0768

Harmonies

Analogous

The Analogous color harmony consists of three colors that are next to each other on the color wheel.



47.4765, 47.9424, 48.3701



46.5189, 47.9424, 46.3372



45.3216, 47.9424, 45.8443

Triad

The Triadic color harmony groups three colors that are evenly spaced from another and form a triangle on the color wheel.



46.5189, 47.9424, 46.3372



43.2905, 47.9424, 52.9108



46.9534, 47.9424, 57.7807

Complementary

The Complementary color scheme is a pair of colors which are on the opposite of each other on the color wheel.



46.5189, 47.9424, 46.3372



44.3200, 47.4762, 57.8672

Split Complementary

Split-complementary colors differ from the complementary color scheme. The scheme consists of three colors, the original color and two neighbors of the complement color.



45.8149, 47.9424, 59.1200



46.5189, 47.9424, 46.3372



43.7109, 47.9424, 56.2293

Square

The Square scheme is like the rectangle color scheme, but the four colors are evenly spaced on the color wheel.



46.5189, 47.9424, 46.3372



43.4715, 47.9424, 49.5425



44.6298, 47.9424, 58.5400



47.7305, 47.9424, 54.9532

Rectangle

The Rectangle color scheme consists of four colors that form a rectangle on the color wheel.



46.5189, 47.9424, 46.3372



44.5514, 47.9424, 46.4353



44.6298, 47.9424, 58.5400



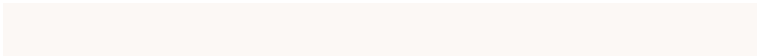
46.5995, 47.9424, 58.4255

Sweetspot

The Sweet Spot groups the original color and five complimentary colors.



46.5202, 47.9445, 46.3382



90.3761, 94.5755, 99.7789



45.9756, 44.8705, 52.2757



19.6461, 20.5284, 21.4695



0.0000, 0.0000, 0.0000



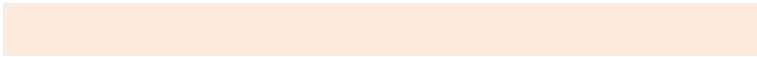
20.3446, 21.4041, 23.3091

Same Dimension

The Same Dimension uses a secret algorithm to generate beautiful new colors.



46.5202, 47.9445, 46.3382



82.5157, 84.6037, 79.4357



48.6960, 52.2961, 47.0635



10.4203, 10.7721, 10.5919



16.7482, 11.7821, 1.3915



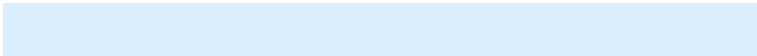
0.7919, 0.6457, 0.0829

Inverse Universe

The Inverse Universe completely reimagines the original color for something new.



44.3200, 47.4762, 57.8672



77.7309, 83.5850, 104.5065



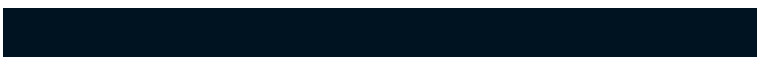
42.2532, 43.3427, 57.1783



9.9952, 10.6816, 12.8198



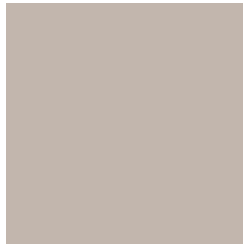
10.2095, 10.1755, 34.9826



0.5084, 0.5743, 1.5339

Previews

White Background



This preview shows how the XYZ color 46.5189, 47.9424, 46.3372 looks on a white background.

Color Contrast Check

Large Text (above 18pt) WCAG AA × Fail

Any Text WCAG AA × Fail

Large Text (above 18pt) WCAG AAA × Fail

Any Text WCAG AAA × Fail

Black Background



This preview shows how the XYZ color 46.5189, 47.9424, 46.3372 looks on a black background.

Color Contrast Check

Large Text (above 18pt) WCAG AA ✓ Pass

Any Text WCAG AA ✓ Pass

Large Text (above 18pt) WCAG AAA ✓ Pass

Any Text WCAG AAA ✓ Pass

If you want to check with other color combinations, try the [Color Contrast Checker](#).

XYZ 46.5189, 47.9424, 46.3372

Background



This preview shows how black text looks on a background with the XYZ color 46.5189, 47.9424, 46.3372.



This preview shows how white text looks on a background with the XYZ color 46.5189, 47.9424,

Color Blindness Simulation

Color vision deficiency is a very complex topic, and I could not describe the different causes any better than Wikipedia does, so if you want to learn more, you should check out their [article about color blindness](#).

Dichromacy



Original Color

46.5189, 47.9424, 46.3372

Protanopia

45.8087, 47.8701, 46.8699

Deuteranopia

49.0140, 48.0186, 46.7296



Tritanopia

48.7717, 47.9608, 57.1389

Trichromacy



Original Color

46.5189, 47.9424, 46.3372

Protanomaly

46.0593, 47.9993, 46.8816

Deuteranomaly

48.1172, 47.8527, 46.7449

Tritanomaly

47.9491, 47.9234, 53.1773

Monochromacy



Original Color

46.5189, 47.9424, 46.3372

Achromatopsia

46.1135, 48.5150, 52.8328

Achromatomaly

46.2200, 48.3085, 50.6045

CSS Examples

Text

The CSS property to change the color of the text to XYZ 46.5189, 47.9424, 46.3372 is called "color". The color property can be set on classes, ids or directly on the HTML element.

This example shows how text in the color `rgb(194, 182, 173)` looks like.

```
.text, #text, p{  
    color:rgb(194, 182, 173)  
}
```

If you want to add a text shadow in that color use the text-shadow property, you can generate a text shadow directly with our [CSS Text Shadow Generator](#).

Here you see how black text with a 4 pixel rgb(194, 182, 173) colored shadow looks like.

```
.shadow{ text-shadow: 4px 4px 2px rgb(194, 182, 173) }
```

Border

The CSS property to change the border of an element to XYZ 46.5189, 47.9424, 46.3372 is called "border". The border property can be set on classes, ids or directly on the HTML element.

This example shows the color as border, it can be applied via the CSS property "border" or "border-color".

```
.border, #border, table{ border:4px solid rgb(194, 182, 173) }
```


If only the border color should be changed use the property `border-color`.

```
.border{ border-color:rgb(194, 182, 173) }
```

If you want to add a box shadow in that color use:

Here you see how a box with a 4 pixel `rgb(194, 182, 173)` colored shadow looks like.

```
.boxshadow{ -moz-box-shadow:4px 4px 4px  
4px rgb(194, 182, 173); -webkit-box-  
shadow:4px 4px 4px 4px rgb(194, 182, 173);  
box-shadow:4px 4px 4px 4px rgb(194, 182,  
173) }
```

Background

The CSS property to change the background color of an element to XYZ 46.5189, 47.9424, 46.3372 is called "background". The background property can be set on classes, ids or directly on the HTML element.

```
.background, #background, body{  
background: rgb(194, 182, 173) }
```

If only the background color should be changed can be used:

```
.background{ background-color: rgb(194,  
182, 173) }
```

This example shows the color as background, it is applied via the CSS property "background".

To optimize and compress your CSS code, you can use our [online CSS compressor and optimizer](#) based on csstidy. If you want to create a linear or radial gradient as background or border, check our [CSS Gradient Generator](#).

Hey! You found this booklet interesting? Support Converting Colors with the new Membership Option!

The pro membership hides all ads, plus gives you double the colors in the color bucket, and more awesome pro features!

[Learn more, Memberships starting at \\$2.50/m!](#)

**Follow me
on Twitter!**

@ConvertingColor