

Converting Colors

XYZ(46.5445, 43.8986, 46.0645)

Have a look what the booklet for
XYZ(46.5445, 43.8986, 46.0645)
contains.

XYZ(46.5445, 43.8986, 46.0645)	3
<i>Conversions</i>	4
<i>Details</i>	6
<i>Harmonies</i>	12
<i>Previews</i>	24
<i>Color Blindness Simulation</i>	28
<i>CSS Examples</i>	31

Color

**XYZ(46.5445, 43.8986,
46.0645)**

Conversions

Conversions Part 1

Format	Color
Hex	CCA8AE
RGB	204, 168, 174
RGB Percent	80%, 66%, 68%
CMY	0.2000, 0.3412, 0.3176
CMYK	0.00, 0.18, 0.15, 0.20
HSL	350°, 26%, 73%
HSV	350°, 18%, 80%
XYZ	46.5445, 43.8986, 46.0645
YIQ	179.4480, 19.5300, 9.4980

Conversions

Conversions Part 2

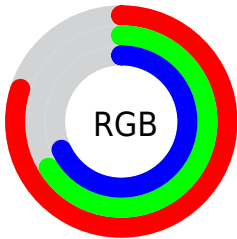
Format	Color
RYB	204, 168, 174
Decimal	13412526
CIELab	72.16, 14.10, 1.86
CIElCh	72, 14.226, 7.514
Yxy	43.8986, 0.3410, 0.3216
Android (android.graphics.Color)	4291602606 (0xFFCCA8AE)
YUV	179.4480, -2.6859, 21.5321
Hunter-Lab	66.2560, 9.4473, 5.1578

Details

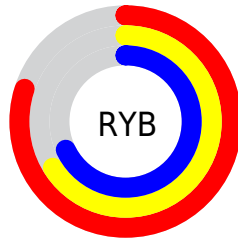
The XYZ color **46.5445, 43.8986, 46.0645** is a light color, and the websafe version is hex **CC9999**. A complement of this color would be **47.9362, 55.5890, 61.6321**, and the grayscale version is **43.0944, 45.3387, 49.3738**.

A 20% lighter version of the original color is **81.7705, 79.6925, 85.2012**, and **22.1527, 20.2855, 21.1603** is the 20% darker color. If you saturate the color by 10%, you get **41.5159, 36.3278, 36.7219**, and if you desaturate by 10%, it is **52.3762, 52.7389, 56.7110**.

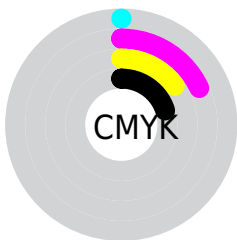
Distribution



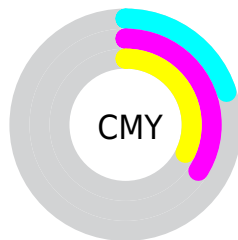
- Red (80%)
- Green (66%)
- Blue (68%)



- Red (80%)
- Yellow (66%)
- Blue (68%)



- Cyan (0%)
- Magenta (18%)
- Yellow (15%)
- Black (20%)




- Cyan (20%)
- Magenta (34%)
- Yellow (32%)

Brightness & Saturation Gradients


These gradients show how the XYZ color 46.5445, 43.8986, 46.0645 changes by changing the brightness by 10 percent. The first figure shows a shift by +10% for each color and the second figure -10%.


Similar to the brightness gradients but the following saturation gradients show a change of the XYZ color 46.5445, 43.8986, 46.0645 by changing the saturation by 10% instead.


 46.5445, 43.8986,
46.0645

 46.5445, 43.8986,
46.0645


363.6728,
362.2943, 387.3530

 32.8821, 30.5908,
31.9477


 84.2562, 81.0651,
85.6508

 22.1950, 20.2875,
21.0571


 109.0362,
105.6927, 111.9574

 14.1176, 12.6042,
12.9741


138.2529,
134.8622, 143.1643

 8.2848, 7.1565,
7.2802

172.2715,
168.9582, 179.6902

 4.3310, 3.5602,
3.5568

211.4575,
208.3650, 221.9534

 1.8911, 1.4307,
1.3855

256.1761,

 0.5716, 0.2392,

253.4671, 270.3726

0.1304

306.7927,
304.6487, 325.3663

■ 0.0000, 0.0000,
0.0000

■ 46.5445, 43.8986,
46.0645

■ 46.5445, 43.8986,
46.0645

■ 41.5159, 36.3278,
36.7219

■ 52.3762, 52.7389,
56.7110

■ 37.2514, 29.9625,
28.6300

■ 59.0405, 62.8971,
68.7061

■ 33.7143, 24.7421,
21.7363

■ 66.5697, 74.4263,
82.0959

■ 30.8635, 20.5983,
15.9832

■ 74.9934, 87.3749,
96.9234

■ 28.6534, 17.4556,
11.3086

■ 78.7121, 91.5775,
108.1354

■ 27.0331, 15.2285,
7.6439

■ 25.9434, 13.8173,
4.9126

■ 25.3039, 13.0817,
3.0240

■ 25.1906, 12.9529,
2.6846

Harmonies

Analogous

The Analogous color harmony consists of three colors that are next to each other on the color wheel.



46.2054, 43.8986, 53.1165



46.5445, 43.8986, 46.0645



45.5526, 43.8986, 40.0827

Triad

The Triadic color harmony groups three colors that are evenly spaced from another and form a triangle on the color wheel.



46.5445, 43.8986, 46.0645



38.9353, 43.8986, 37.9240



39.9577, 43.8986, 61.3011

Complementary

The Complementary color scheme is a pair of colors which are on the opposite of each other on the color wheel.



46.5445, 43.8986, 46.0645



47.9362, 55.5890, 61.6321

Split Complementary

Split-complementary colors differ from the complementary color scheme. The scheme consists of three colors, the original color and two neighbors of the complement color.



38.1167, 43.8986, 56.4450



46.5445, 43.8986, 46.0645



37.5427, 43.8986, 42.8471

Square

The Square scheme is like the rectangle color scheme, but the four colors are evenly spaced on the color wheel.



46.5445, 43.8986, 46.0645



41.1145, 43.8986, 35.6896



37.2489, 43.8986, 49.5747



42.3401, 43.8986, 62.3756

Rectangle

The Rectangle color scheme consists of four colors that form a rectangle on the color wheel.



46.5445, 43.8986, 46.0645



44.2920, 43.8986, 37.3481



37.2489, 43.8986, 49.5747



39.2578, 43.8986, 60.0354

Sweetspot

The Sweet Spot groups the original color and five complimentary colors.



46.5457, 43.9006, 46.0654



89.4526, 91.4676, 98.8263



48.1919, 44.3727, 63.1522



18.9843, 19.3309, 20.8598



0.0000, 0.0000, 0.0000



20.3446, 21.4041, 23.3091

Same Dimension

The Same Dimension uses a secret algorithm to generate beautiful new colors.



46.5457, 43.9006, 46.0654



73.9108, 67.9150, 70.4285



48.2924, 48.3088, 43.8274



11.2873, 11.2437, 12.0476



15.8785, 8.1620, 1.8129



0.8435, 0.4308, 0.2217

Inverse Universe

The Inverse Universe completely reimagines the original color for something new.



46.5457, 43.9006, 46.0654



73.9108, 67.9150, 70.4285



45.8988, 50.3853, 64.4336



11.2873, 11.2437, 12.0476



15.8785, 8.1620, 1.8129



0.8435, 0.4308, 0.2217

Previews

White Background



This preview shows how the XYZ color 46.5445, 43.8986, 46.0645 looks on a white background.

Color Contrast Check

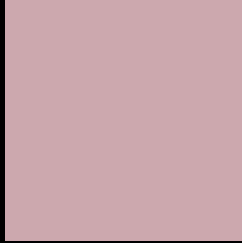
Large Text (above 18pt) WCAG AA × Fail

Any Text WCAG AA × Fail

Large Text (above 18pt) WCAG AAA × Fail

Any Text WCAG AAA × Fail

Black Background



This preview shows how the XYZ color 46.5445, 43.8986, 46.0645 looks on a black background.

Color Contrast Check

Large Text (above 18pt) WCAG AA ✓ Pass

Any Text WCAG AA ✓ Pass

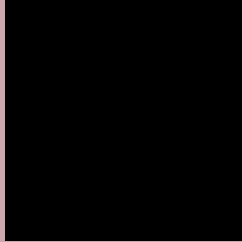
Large Text (above 18pt) WCAG AAA ✓ Pass

Any Text WCAG AAA ✓ Pass

If you want to check with other color combinations, try the [Color Contrast Checker](#).

XYZ 46.5445, 43.8986, 46.0645

Background



This preview shows how black text looks on a background with the XYZ color 46.5445, 43.8986, 46.0645.



This preview shows how white text looks on a background with the XYZ color 46.5445, 43.8986,

Color Blindness Simulation

Color vision deficiency is a very complex topic, and I could not describe the different causes any better than Wikipedia does, so if you want to learn more, you should check out their [article about color blindness](#).

Dichromacy



Original Color

46.5445, 43.8986, 46.0645

Protanopia

42.4844, 44.0086, 48.9032

Deuteranopia

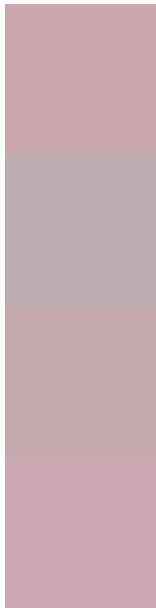
44.8707, 43.8787, 45.6397



Tritanopia

47.2338, 43.9119, 49.1664

Trichromacy



Original Color

46.5445, 43.8986, 46.0645

Protanomaly

43.8656, 43.8803, 47.7527

Deuteranomaly

45.4707, 43.9087, 45.6138

Tritanomaly

47.0314, 43.8309, 48.1009

Monochromacy



Original Color

46.5445, 43.8986, 46.0645

Achromatopsia

42.8472, 45.0786, 49.0906

Achromatomaly

44.0048, 44.5256, 47.8700

CSS Examples

Text

The CSS property to change the color of the text to XYZ 46.5445, 43.8986, 46.0645 is called "color". The color property can be set on classes, ids or directly on the HTML element.

This example shows how text in the color `rgb(204, 168, 174)` looks like.

```
.text, #text, p{  
    color:rgb(204, 168, 174)  
}
```

If you want to add a text shadow in that color use the text-shadow property, you can generate a text shadow directly with our [CSS Text Shadow Generator](#).

Here you see how black text with a 4 pixel rgb(204, 168, 174) colored shadow looks like.

```
.shadow{ text-shadow: 4px 4px 2px rgb(204, 168, 174) }
```

Border

The CSS property to change the border of an element to XYZ 46.5445, 43.8986, 46.0645 is called "border". The border property can be set on classes, ids or directly on the HTML element.

This example shows the color as border, it can be applied via the CSS property "border" or "border-color".

```
.border, #border, table{ border:4px solid rgb(204, 168, 174) }
```


If only the border color should be changed use the property `border-color`.

```
.border{ border-color:rgb(204, 168, 174) }
```

If you want to add a box shadow in that color use:

Here you see how a box with a 4 pixel `rgb(204, 168, 174)` colored shadow looks like.

```
.boxshadow{ -moz-box-shadow:4px 4px 4px  
4px rgb(204, 168, 174); -webkit-box-  
shadow:4px 4px 4px 4px rgb(204, 168, 174);  
box-shadow:4px 4px 4px 4px rgb(204, 168,  
174) }
```

Background

The CSS property to change the background color of an element to XYZ 46.5445, 43.8986, 46.0645 is called "background". The background property can be set on classes, ids or directly on the HTML element.

```
.background, #background, body{  
background: rgb(204, 168, 174) }
```

If only the background color should be changed can be used:

```
.background{ background-color: rgb(204,  
168, 174) }
```

This example shows the color as background, it is applied via the CSS property "background".

To optimize and compress your CSS code, you can use our [online CSS compressor and optimizer](#) based on csstidy. If you want to create a linear or radial gradient as background or border, check our [CSS Gradient Generator](#).

Hey! You found this booklet interesting? Support Converting Colors with the new Membership Option!

The pro membership hides all ads, plus gives you double the colors in the color bucket, and more awesome pro features!

[Learn more, Memberships starting at \\$2.50/m!](#)

**Follow me
on Twitter!**

@ConvertingColor