

# Converting Colors

XYZ(46.5546, 42.9329, 40.9551)

Have a look what the booklet for  
XYZ(46.5546, 42.9329, 40.9551)  
contains.

<b>XYZ(46.5546, 42.9329, 40.9551)</b> .....	3
<b><i>Conversions</i></b> .....	4
<b><i>Details</i></b> .....	6
<b><i>Harmonies</i></b> .....	12
<b><i>Previews</i></b> .....	24
<b><i>Color Blindness Simulation</i></b> .....	28
<b><i>CSS Examples</i></b> .....	31

# Color

**XYZ(46.5546, 42.9329,  
40.9551)**

# Conversions

## Conversions Part 1

Format	Color
Hex	D2A4A4
RGB	210, 164, 164
RGB Percent	82%, 64%, 64%
CMY	0.1765, 0.3568, 0.3569
CMYK	0.00, 0.22, 0.22, 0.18
HSL	0°, 34%, 73%
HSV	0°, 22%, 82%
XYZ	46.5546, 42.9329, 40.9551
YIQ	177.7540, 27.4160, 9.7520

# Conversions

## Conversions Part 2

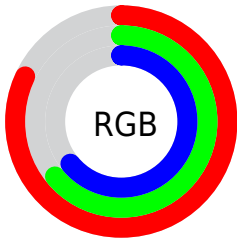
Format	Color
<a href="#">RYB</a>	<a href="#">210, 164, 164</a>
Decimal	<a href="#">13804708</a>
CIELab	<a href="#">71.51, 16.94, 6.51</a>
CIElCh	<a href="#">72, 18.146, 21.015</a>
Yxy	<a href="#">42.9329, 0.3569, 0.3291</a>
Android (android.graphics.Color)	<a href="#">4291994788 (0xFFD2A4A4)</a>
YUV	<a href="#">177.7540, -6.7807, 28.2797</a>
Hunter-Lab	<a href="#">65.5232, 12.1596, 8.8072</a>

# Details

The XYZ color **46.5546, 42.9329, 40.9551** is a light color, and the websafe version is hex **CC9999**. A complement of this color would be **49.9886, 58.6370, 69.6564**, and the grayscale version is **42.2124, 44.4108, 48.3633**.

A 20% lighter version of the original color is **79.3577, 77.0375, 77.7050**, and **22.2364, 19.7268, 17.9649** is the 20% darker color. If you saturate the color by 10%, you get **41.3600, 35.3320, 30.6269**, and if you desaturate by 10%, it is **52.6852, 51.9039, 53.1412**.

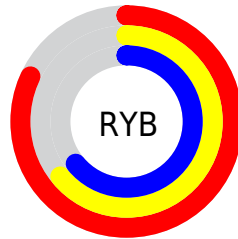
# Distribution



Red (82%)

Green (64%)

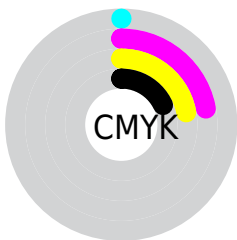
Blue (64%)



Red (82%)

Yellow (64%)

Blue (64%)

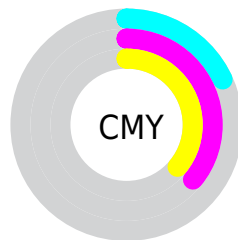


Cyan (0%)

Magenta (22%)

Yellow (22%)

Black (18%)



Cyan (18%)

Magenta (36%)


Yellow (36%)


# Brightness & Saturation Gradients

These gradients show how the XYZ color 46.5546, 42.9329, 40.9551 changes by changing the brightness by 10 percent. The first figure shows a shift by +10% for each color and the second figure -10%.


Similar to the brightness gradients but the following saturation gradients show a change of the XYZ color 46.5546, 42.9329, 40.9551 by changing the saturation by 10% instead.





 46.5546, 42.9329,  
40.9551


 46.5546, 42.9329,  
40.9551


363.7125,  
358.3357, 365.8040

 32.8902, 29.8325,  
27.9646


 84.2712, 79.6096,  
77.8687

 22.2011, 19.7115,  
18.0601


 109.0541,  
103.9546, 102.6288

 14.1222, 12.1855,  
10.8233


138.2738,  
132.8167, 132.1491

 8.2880, 6.8701,  
5.8355

172.2957,  
166.5801, 166.8483

 4.3331, 3.3810,  
2.6781

211.4852,  
205.6294, 207.1449

 1.8923, 1.3337,  
0.9324

256.2076,

 0.5723, 0.1671,

250.3488, 253.4573

0.0000

306.8282,  
301.1228, 306.2042

0.0000, 0.0000,  
0.0000

46.5546, 42.9329,  
40.9551

46.5546, 42.9329,  
40.9551

41.3600, 35.3320,  
30.6269

52.6852, 51.9039,  
53.1412

37.0520, 29.0281,  
22.0628

59.7908, 62.3013,  
67.2673

33.5822, 23.9508,  
15.1652

67.9127, 74.1858,  
83.4138

30.8960, 20.0201,  
9.8255

77.0886, 87.6125,  
101.6558

28.9326, 17.1469,  
5.9226

80.3884, 92.4417,  
108.2138

■ 27.6219, 15.2289,  
3.3174

■ 26.8803, 14.1436,  
1.8436

■ 26.5786, 13.7021,  
1.2439

# Harmonies

## Analogous

The Analogous color harmony consists of three colors that are next to each other on the color wheel.



46.9043, 42.9329, 49.4305



46.5546, 42.9329, 40.9551



44.6247, 42.9329, 34.8235

# Triad

The Triadic color harmony groups three colors that are evenly spaced from another and form a triangle on the color wheel.



46.5546, 42.9329, 40.9551



36.3976, 42.9329, 36.9183



39.8936, 42.9329, 65.4637

# Complementary

The Complementary color scheme is a pair of colors which are on the opposite of each other on the color wheel.



46.5546, 42.9329, 40.9551



49.9886, 58.6370, 69.6564

# Split Complementary

Split-complementary colors differ from the complementary color scheme. The scheme consists of three colors, the original color and two neighbors of the complement color.



37.2124, 42.9329, 61.1211



46.5546, 42.9329, 40.9551



35.2614, 42.9329, 44.1618

# Square

The Square scheme is like the rectangle color scheme, but the four colors are evenly spaced on the color wheel.



46.5546, 42.9329, 40.9551



38.7306, 42.9329, 32.7035



35.5520, 42.9329, 53.0599



42.9551, 42.9329, 64.3251



# Rectangle

The Rectangle color scheme consists of four colors that form a rectangle on the color wheel.



46.5546, 42.9329, 40.9551



42.7525, 42.9329, 32.5426



35.5520, 42.9329, 53.0599



38.9204, 42.9329, 64.5784

# Sweetspot

The Sweet Spot groups the original color and five complimentary colors.



46.5558, 42.9349, 40.9560



86.8761, 88.0394, 92.6502



51.4870, 44.9062, 66.9271



18.4520, 18.6348, 19.5466



0.0000, 0.0000, 0.0000



20.3446, 21.4041, 23.3091



# Same Dimension

The Same Dimension uses a secret algorithm to generate beautiful new colors.



46.5558, 42.9349, 40.9560



68.5272, 61.1900, 56.1726



51.0498, 51.9230, 42.4540



11.8089, 11.8084, 12.2689



16.2126, 8.3581, 0.7588



0.9065, 0.4674, 0.0424



# Inverse Universe

The Inverse Universe completely reimagines the original color for something new.



49.9886, 58.6370, 69.6564



74.7200, 89.5166, 107.9480



44.7134, 48.0867, 67.8980



12.1583, 13.4069, 15.1906



21.1511, 30.9488, 42.0514

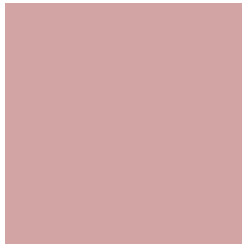


1.1827, 1.7305, 2.3513



# Previews

## White Background



This preview shows how the XYZ color 46.5546, 42.9329, 40.9551 looks on a white background.

## Color Contrast Check

Large Text (above 18pt) WCAG AA × Fail

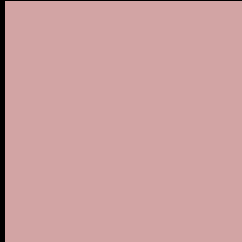
Any Text WCAG AA × Fail

Large Text (above 18pt) WCAG AAA × Fail

Any Text WCAG AAA × Fail



# Black Background



This preview shows how the XYZ color 46.5546, 42.9329, 40.9551 looks on a black background.

## Color Contrast Check

Large Text (above 18pt) WCAG AA ✓ Pass

Any Text WCAG AA ✓ Pass

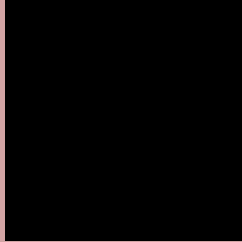
Large Text (above 18pt) WCAG AAA ✓ Pass

Any Text WCAG AAA ✓ Pass

If you want to check with other color combinations, try the [Color Contrast Checker](#).

# XYZ 46.5546, 42.9329, 40.9551

## Background



This preview shows how black text looks on a background with the XYZ color 46.5546, 42.9329, 40.9551.



This preview shows how white text looks on a background with the XYZ color 46.5546, 42.9329,



# Color Blindness Simulation

Color vision deficiency is a very complex topic, and I could not describe the different causes any better than Wikipedia does, so if you want to learn more, you should check out their [article about color blindness](#).

## Dichromacy



### Original Color

46.5546, 42.9329, 40.9551

### Protanopia

41.4081, 43.2655, 44.1989

### Deuteranopia

43.8248, 42.8906, 40.6192



## Tritanopia

47.5222, 42.7847, 46.3110

# Trichromacy



## Original Color

46.5546, 42.9329, 40.9551

## Protanomaly

43.1167, 43.0293, 43.0788

## Deuteranomaly

44.7867, 42.8383, 40.5584

## Tritanomaly

47.3118, 42.9835, 44.3311

# Monochromacy



## Original Color

46.5546, 42.9329, 40.9551

## Achromatopsia

42.3164, 44.5201, 48.4824

## Achromatomaly

43.7216, 43.8514, 45.6950

# CSS Examples

## Text

The CSS property to change the color of the text to XYZ 46.5546, 42.9329, 40.9551 is called "color". The color property can be set on classes, ids or directly on the HTML element.

This example shows how text in the color `rgb(210, 164, 164)` looks like.

```
.text, #text, p{  
    color:rgb(210, 164, 164)  
}
```

If you want to add a text shadow in that color use the text-shadow property, you can generate a text shadow directly with our [CSS Text Shadow Generator](#).

Here you see how black text with a 4 pixel rgb(210, 164, 164) colored shadow looks like.

```
.shadow{ text-shadow: 4px 4px 2px rgb(210, 164, 164) }
```

## Border

The CSS property to change the border of an element to XYZ 46.5546, 42.9329, 40.9551 is called "border". The border property can be set on classes, ids or directly on the HTML element.

This example shows the color as border, it can be applied via the CSS property "border" or "border-color".

```
.border, #border, table{ border:4px solid rgb(210, 164, 164) }
```



If only the border color should be changed use the property `border-color`.

```
.border{ border-color:rgb(210, 164, 164) }
```

If you want to add a box shadow in that color use:

Here you see how a box with a 4 pixel `rgb(210, 164, 164)` colored shadow looks like.

```
.boxshadow{ -moz-box-shadow:4px 4px 4px  
4px rgb(210, 164, 164); -webkit-box-  
shadow:4px 4px 4px 4px rgb(210, 164, 164);  
box-shadow:4px 4px 4px 4px rgb(210, 164,  
164) }
```

# Background

The CSS property to change the background color of an element to XYZ 46.5546, 42.9329, 40.9551 is called "background". The background property can be set on classes, ids or directly on the HTML element.

```
.background, #background, body{  
background: rgb(210, 164, 164) }
```

If only the background color should be changed can be used:

```
.background{ background-color: rgb(210,  
164, 164) }
```

This example shows the color as background, it is applied via the CSS property "background".

To optimize and compress your CSS code, you can use our [online CSS compressor and optimizer](#) based on csstidy. If you want to create a linear or radial gradient as background or border, check our [CSS Gradient Generator](#).

Hey! You found this booklet interesting? Support Converting Colors with the new Membership Option!

The pro membership hides all ads, plus gives you double the colors in the color bucket, and more awesome pro features!

**[Learn more, Memberships starting at \\$2.50/m!](#)**

**Follow me  
on Twitter!**

@ConvertingColor