

# Converting Colors

XYZ(46.6067, 27.8806, 16.3984)

Have a look what the booklet for  
XYZ(46.6067, 27.8806, 16.3984)  
contains.

<b>XYZ(46.5858, 27.8719, 16.2891)</b> .....	3
<b><i>Conversions</i></b> .....	4
<b><i>Details</i></b> .....	6
<b><i>Harmonies</i></b> .....	12
<b><i>Previews</i></b> .....	24
<b><i>Color Blindness Simulation</i></b> .....	28
<b><i>CSS Examples</i></b> .....	31

# Color

**XYZ(46.5858, 27.8719,  
16.2891)**

# Conversions

## Conversions Part 1

<b>Format</b>	<b>Color</b>
Hex	FF4F69
RGB	255, 79, 105
RGB Percent	100%, 31%, 41%
CMY	0.0000, 0.6901, 0.5882
CMYK	0.00, 0.69, 0.59, 0.00
HSL	351°, 100%, 65%
HSV	351°, 69%, 100%
XYZ	46.5858, 27.8719, 16.2891
YIQ	134.5880, 96.5500, 45.3980

# Conversions

## Conversions Part 2

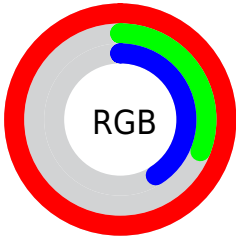
<b>Format</b>	<b>Color</b>
<b>R<sub>YB</sub></b>	255, 79, 105
Decimal	16732009
CIE <sub>Lab</sub>	59.77, 67.62, 24.47
CIE <sub>LCh</sub>	60, 71.908, 19.896
Yxy	27.8719, 0.5134, 0.3071
Android (android.graphics.Color)	4294922089 (0xFFFF4F69)
YUV	134.5880, -14.5869, 105.6013
Hunter-Lab	52.7938, 65.1209, 18.6623

# Details

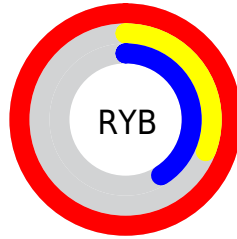
The XYZ color **46.5858, 27.8719, 16.2891** is a dark color, and the websafe version is hex **FF3366**. The color can be described as middle washed rose. A complement of this color would be **53.1296, 78.8402, 86.5539**, and the grayscale version is **22.9055, 24.0983, 26.2431**.

A 20% lighter version of the original color is **56.3292, 41.8373, 36.5590**, and **22.5019, 11.5120, 5.0390** is the 20% darker color. If you saturate the color by 10%, you get **44.1080, 24.4817, 10.6383**, and if you desaturate by 10%, it is **50.0553, 32.7893, 23.6790**.

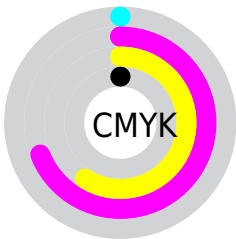
# Distribution



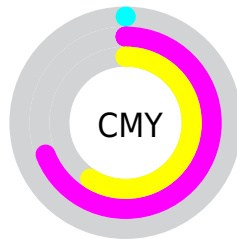
- Red (100%)
- Green (31%)
- Blue (41%)



- Red (100%)
- Yellow (31%)
- Blue (41%)



- Cyan (0%)
- Magenta (69%)
- Yellow (59%)
- Black (0%)



- Cyan (0%)
- Magenta (69%)
- Yellow (59%)

# Brightness & Saturation Gradients

These gradients show how the XYZ color 46.5858, 27.8719, 16.2891 changes by changing the brightness by 10 percent. The first figure shows a shift by +10% for each color and the second figure -10%.

Similar to the brightness gradients but the following saturation gradients show a change of the XYZ color 46.5858, 27.8719, 16.2891 by changing the saturation by 10% instead.



46.5858, 27.8719,  
16.2891

46.5858, 27.8719,  
16.2891

363.8354,  
291.8543, 242.9453

32.9149, 18.2291,  
9.5724

84.3175, 56.2799,  
37.8731

22.2202, 11.1146,  
5.0145

109.1091, 75.8138,  
53.5775

14.1363, 6.1440,  
2.1969

138.3382, 99.4136,  
73.1149

8.2979, 2.9328,  
0.6726

172.3703,  
127.4637, 96.9038

4.3395, 1.0968,  
0.0000

211.5707,  
160.3484, 125.3627

1.8960, 0.0000,  
0.0000

256.3048,

0.5745, 0.0000,

198.4521, 158.9103

0.0000

306.9379,  
242.1593, 197.9650

■ 0.0000, 0.0000,  
0.0000

■ 46.5858, 27.8719,  
16.2891

■ 46.5858, 27.8719,  
16.2891

■ 44.1080, 24.4817,  
10.6383

■ 50.0553, 32.7893,  
23.6790

■ 42.5121, 22.4337,  
6.5799

■ 54.6065, 39.3813,  
32.9354


■ 41.6466, 21.4663,  
3.9379

■ 60.3214, 47.7832,  
44.1750

■ 41.5841, 21.3976,  
3.7433

■ 67.2736, 58.1154,  
57.5047

■ 75.5302, 70.4875,  
73.0235

 85.1538, 85.0013,  
90.8241

95.0498, 99.9999,  
108.9000

# Harmonies

## Analogous

The Analogous color harmony consists of three colors that are next to each other on the color wheel.



47.7211, 27.8719, 40.0155



46.5858, 27.8719, 16.2891



39.4371, 27.8719, 5.8907

# Triad

The Triadic color harmony groups three colors that are evenly spaced from another and form a triangle on the color wheel.



46.5858, 27.8719, 16.2891



15.2352, 27.8719, 8.1599



23.5387, 27.8719, 111.2441

# Complementary

The Complementary color scheme is a pair of colors which are on the opposite of each other on the color wheel.



46.5858, 27.8719, 16.2891



53.1296, 78.8402, 86.5539

# Split Complementary

Split-complementary colors differ from the complementary color scheme. The scheme consists of three colors, the original color and two neighbors of the complement color.



16.7429, 27.8719, 87.0778



46.5858, 27.8719, 16.2891



12.7293, 27.8719, 22.3779

# Square

The Square scheme is like the rectangle color scheme, but the four colors are evenly spaced on the color wheel.



46.5858, 27.8719, 16.2891



20.9718, 27.8719, 3.4076



13.2094, 27.8719, 50.7951



32.9033, 27.8719, 106.0635



# Rectangle

The Rectangle color scheme consists of four colors that form a rectangle on the color wheel.



46.5858, 27.8719, 16.2891



32.9724, 27.8719, 3.4221



13.2094, 27.8719, 50.7951



20.9207, 27.8719, 105.9201

# Sweetspot

The Sweet Spot groups the original color and five complimentary colors.



46.5865, 27.8735, 16.2895



73.7847, 67.8646, 69.7645



53.0328, 29.4061, 97.4881



15.2922, 13.7745, 13.9938



0.0000, 0.0000, 0.0000



20.3446, 21.4041, 23.3091



# Same Dimension

The Same Dimension uses a secret algorithm to generate beautiful new colors.



46.5865, 27.8735, 16.2895



43.3732, 23.5159, 8.8390



52.1186, 40.7588, 12.5197



18.1187, 18.0308, 19.2420



21.7613, 11.1938, 2.1276



2.1497, 1.1023, 0.3698



# Inverse Universe

The Inverse Universe completely reimagines the original color for something new.



46.5865, 27.8735, 16.2895



43.3732, 23.5159, 8.8390



40.4347, 47.2014, 101.5869



18.1187, 18.0308, 19.2420



21.7613, 11.1938, 2.1276



2.1497, 1.1023, 0.3698



# Previews

## White Background



This preview shows how the XYZ color 46.5858, 27.8719, 16.2891 looks on a white background.

## Color Contrast Check

Large Text (above 18pt) WCAG AA ✓ Pass

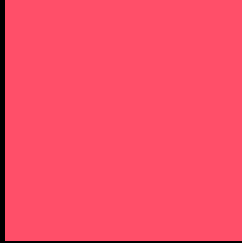
Any Text WCAG AA × Fail

Large Text (above 18pt) WCAG AAA × Fail

Any Text WCAG AAA × Fail



# Black Background



This preview shows how the XYZ color 46.5858, 27.8719, 16.2891 looks on a black background.

## Color Contrast Check

Large Text (above 18pt) WCAG AA ✓ Pass

Any Text WCAG AA ✓ Pass

Large Text (above 18pt) WCAG AAA ✓ Pass

Any Text WCAG AAA × Fail

If you want to check with other color combinations, try the [Color Contrast Checker](#).

**XYZ 46.5858, 27.8719, 16.2891**

## **Background**



This preview shows how black text looks on a background with the XYZ color 46.5858, 27.8719, 16.2891.



This preview shows how white text looks on a background with the XYZ color 46.5858, 27.8719,



# Color Blindness Simulation

Color vision deficiency is a very complex topic, and I could not describe the different causes any better than Wikipedia does, so if you want to learn more, you should check out their [article about color blindness](#).

## Dichromacy



### Original Color

46.5858, 27.8719, 16.2891

### Protanopia

26.7409, 28.0853, 26.9333

### Deuteranopia

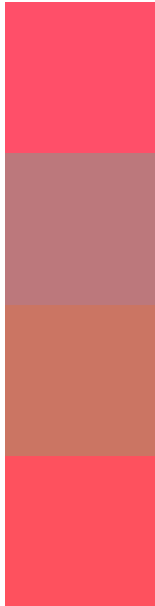
28.4334, 27.9057, 14.9541



## Tritanopia

45.6106, 27.7935, 11.9776

# Trichromacy



## Original Color

46.5858, 27.8719, 16.2891

## Protanomaly

31.0936, 25.5795, 22.3673

## Deuteranomaly

33.2420, 26.3199, 15.1326

## Tritanomaly

45.8359, 27.7638, 13.5328

# Monochromacy



## Original Color

46.5858, 27.8719, 16.2891

## Achromatopsia

23.0288, 24.2281, 26.3844

## Achromatomaly

28.3592, 23.3004, 22.0715

# CSS Examples

## Text

The CSS property to change the color of the text to XYZ 46.5858, 27.8719, 16.2891 is called "color". The color property can be set on classes, ids or directly on the HTML element.

This example shows how text in the color `rgb(255, 79, 105)` looks like.

```
.text, #text, p{  
    color:rgb(255, 79, 105)  
}
```

If you want to add a text shadow in that color use the text-shadow property, you can generate a text shadow directly with our [CSS Text Shadow Generator](#).

Here you see how black text with a 4 pixel rgb(255, 79, 105) colored shadow looks like.

```
.shadow{ text-shadow: 4px 4px 2px rgb(255, 79, 105) }
```

## Border

The CSS property to change the border of an element to XYZ 46.5858, 27.8719, 16.2891 is called "border". The border property can be set on classes, ids or directly on the HTML element.

This example shows the color as border, it can be applied via the CSS property "border" or "border-color".

```
.border, #border, table{ border:4px solid rgb(255, 79, 105) }
```



If only the border color should be changed use the property `border-color`.

```
.border{ border-color:rgb(255, 79, 105) }
```

If you want to add a box shadow in that color use:

Here you see how a box with a 4 pixel `rgb(255, 79, 105)` colored shadow looks like.

```
.boxshadow{ -moz-box-shadow:4px 4px 4px  
4px rgb(255, 79, 105); -webkit-box-  
shadow:4px 4px 4px 4px rgb(255, 79, 105);  
box-shadow:4px 4px 4px 4px rgb(255, 79,  
105) }
```

# Background

The CSS property to change the background color of an element to XYZ 46.5858, 27.8719, 16.2891 is called "background". The background property can be set on classes, ids or directly on the HTML element.

```
.background, #background, body{  
background: rgb(255, 79, 105) }
```

If only the background color should be changed can be used:

```
.background{ background-color: rgb(255, 79,  
105) }
```

This example shows the color as background, it is applied via the CSS property "background".

To optimize and compress your CSS code, you can use our [online CSS compressor and optimizer](#) based on csstidy. If you want to create a linear or radial gradient as background or border, check our [CSS Gradient Generator](#).

Hey! You found this booklet interesting? Support Converting Colors with the new Membership Option!

The pro membership hides all ads, plus gives you double the colors in the color bucket, and more awesome pro features!

**[Learn more, Memberships starting at \\$2.50/m!](#)**

**Follow me  
on Twitter!**

@ConvertingColor