

Converting Colors

XYZ(46.6098, 46.6759, 53.6763)

Have a look what the booklet for
XYZ(46.6098, 46.6759, 53.6763)
contains.

XYZ(46.6283, 46.6351, 53.5576)	3
<i>Conversions</i>	4
<i>Details</i>	6
<i>Harmonies</i>	12
<i>Previews</i>	24
<i>Color Blindness Simulation</i>	28
<i>CSS Examples</i>	31

Color

**XYZ(46.6283, 46.6351,
53.5576)**

Conversions

Conversions Part 1

Format	Color
Hex	C0B2BB
RGB	192, 178, 187
RGB Percent	75%, 70%, 73%
CMY	0.2471, 0.3019, 0.2667
CMYK	0.00, 0.07, 0.03, 0.25
HSL	321°, 10%, 73%
HSV	321°, 7%, 75%
XYZ	46.6283, 46.6351, 53.5576
YIQ	183.2120, 5.4550, 5.7670

Conversions

Conversions Part 2

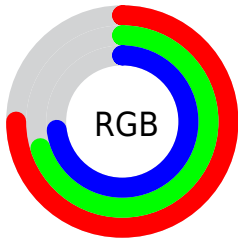
Format	Color
R _Y B	192, 178, 187
Decimal	12628667
CIE Lab	73.96, 6.60, -2.78
CIE LCh	74, 7.164, 337.164
Yxy	46.6351, 0.3176, 0.3176
Android (android.graphics.Color)	4290818747 (0xFFC0B2BB)
YUV	183.2120, 1.8675, 7.7071
Hunter-Lab	68.2899, 2.3724, 1.3037

Details

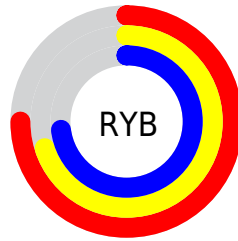
The XYZ color **46.6283, 46.6351, 53.5576** is a light color, and the websafe version is hex **CCCCCC**. A complement of this color would be **45.7588, 50.5845, 52.1543**, and the grayscale version is **45.1152, 47.4647, 51.6890**.

A 20% lighter version of the original color is **84.3119, 85.2732, 96.8097**, and **22.2842, 21.8774, 25.6025** is the 20% darker color. If you saturate the color by 10%, you get **42.3558, 39.2368, 48.5971**, and if you desaturate by 10%, it is **51.4732, 55.1209, 58.8831**.

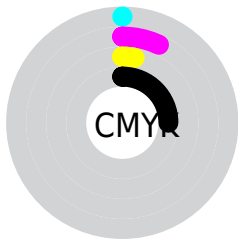
Distribution



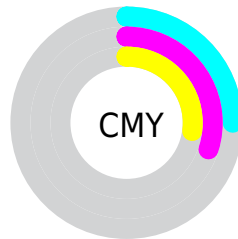
- Red (75%)
- Green (70%)
- Blue (73%)



- Red (75%)
- Yellow (70%)
- Blue (73%)



- Cyan (0%)
- Magenta (7%)
- Yellow (3%)
- Black (25%)



- Cyan (25%)
- Magenta (30%)
- Yellow (27%)

Brightness & Saturation Gradients

These gradients show how the XYZ color 46.6283, 46.6351, 53.5576 changes by changing the brightness by 10 percent. The first figure shows a shift by +10% for each color and the second figure -10%.

Similar to the brightness gradients but the following saturation gradients show a change of the XYZ color 46.6283, 46.6351, 53.5576 by changing the saturation by 10% instead.

■ 46.6283, 46.6351,
53.5576

■ 46.6283, 46.6351,
53.5576

364.0026,
373.3561, 417.5476

■ 32.9486, 32.7473,
37.8573

■ 84.3806, 85.1687,
96.8742

■ 22.2461, 21.9329,
25.5710

109.1840,
110.5832, 125.3276

■ 14.1555, 13.8076,
16.2801

138.4260,
140.6088, 158.8692

■ 8.3113, 7.9870,
9.5661

172.4720,
175.6298, 197.9173

■ 4.3483, 4.0866,
5.0104

211.6873,
216.0307, 242.8907

■ 1.9010, 1.7221,
2.1945

256.4372,

■ 0.5774, 0.4379,

262.1958, 294.2079

0.6712

307.0872,
314.5094, 352.2873

■ 0.0000, 0.0000,
0.0000

■ 46.6283, 46.6351,
53.5576

■ 46.6283, 46.6351,
53.5576

■ 42.3558, 39.2368,
48.5971

■ 51.4732, 55.1209,
58.8831

■ 38.6292, 32.8755,
43.9887

■ 56.9079, 64.7299,
64.5800

■ 35.4257, 27.5058,
39.7228

■ 62.9537, 75.5036,
70.6583

■ 32.7193, 23.0765,
35.7884

■ 69.6299, 87.4797,
77.1267

■ 30.4817, 19.5320,
32.1735

■ 70.5892, 87.9629,
81.8716

■ 28.6817, 16.8105,
28.8650

■ 71.5237, 88.3367,
86.7926

■ 27.2839, 14.8424,
25.8486

■ 72.4960, 88.7256,
91.9126

■ 26.2473, 13.5462,
23.1076

■ 73.5065, 89.1298,
97.2339

■ 25.5140, 12.8072,
20.6201

■ 74.5556, 89.5495,
102.7586

Harmonies

Analogous

The Analogous color harmony consists of three colors that are next to each other on the color wheel.



45.8261, 46.6351, 56.5938



46.6283, 46.6351, 53.5576



46.8079, 46.6351, 49.9052

Triad

The Triadic color harmony groups three colors that are evenly spaced from another and form a triangle on the color wheel.



46.6283, 46.6351, 53.5576



44.0196, 46.6351, 44.1115



42.3961, 46.6351, 55.1480

Complementary

The Complementary color scheme is a pair of colors which are on the opposite of each other on the color wheel.



46.6283, 46.6351, 53.5576



45.7588, 50.5845, 52.1543

Split Complementary

Split-complementary colors differ from the complementary color scheme. The scheme consists of three colors, the original color and two neighbors of the complement color.



41.9320, 46.6351, 51.6603



46.6283, 46.6351, 53.5576



42.8576, 46.6351, 45.3744

Square

The Square scheme is like the rectangle color scheme, but the four colors are evenly spaced on the color wheel.



46.6283, 46.6351, 53.5576



45.2856, 46.6351, 44.5651



42.0993, 46.6351, 48.0957



43.3786, 46.6351, 57.5423

Rectangle

The Rectangle color scheme consists of four colors that form a rectangle on the color wheel.



46.6283, 46.6351, 53.5576



46.5472, 46.6351, 47.6326



42.0993, 46.6351, 48.0957



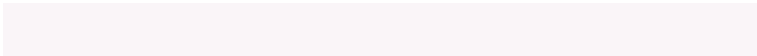
42.1752, 46.6351, 54.0582

Sweetspot

The Sweet Spot groups the original color and five complimentary colors.



46.6296, 46.6371, 53.5586



88.9723, 92.3355, 102.0333



44.9413, 45.7038, 56.3230



19.1069, 19.8430, 21.9108



92.9021, 97.7402, 106.4391



19.4759, 20.4902, 22.3138

Same Dimension

The Same Dimension uses a secret algorithm to generate beautiful new colors.



46.6296, 46.6371, 53.5586



82.9764, 81.8704, 95.3277



45.9087, 46.3487, 49.7621



10.3396, 10.1844, 11.8789



17.0888, 8.5253, 13.6454



0.7702, 0.3811, 0.7575

Inverse Universe

The Inverse Universe completely reimagines the original color for something new.



46.6296, 46.6371, 53.5586



82.9764, 81.8704, 95.3277



46.4946, 50.8788, 56.0290



10.3396, 10.1844, 11.8789



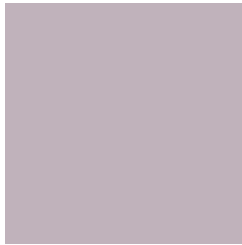
17.0888, 8.5253, 13.6454



0.7702, 0.3811, 0.7575

Previews

White Background



This preview shows how the XYZ color 46.6283, 46.6351, 53.5576 looks on a white background.

Color Contrast Check

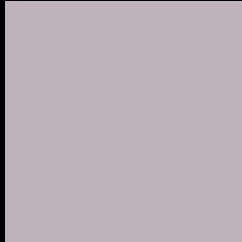
Large Text (above 18pt) WCAG AA × Fail

Any Text WCAG AA × Fail

Large Text (above 18pt) WCAG AAA × Fail

Any Text WCAG AAA × Fail

Black Background



This preview shows how the XYZ color 46.6283, 46.6351, 53.5576 looks on a black background.

Color Contrast Check

Large Text (above 18pt) WCAG AA ✓ Pass

Any Text WCAG AA ✓ Pass

Large Text (above 18pt) WCAG AAA ✓ Pass

Any Text WCAG AAA ✓ Pass

If you want to check with other color combinations, try the [Color Contrast Checker](#).

XYZ 46.6283, 46.6351, 53.5576

Background



This preview shows how black text looks on a background with the XYZ color 46.6283, 46.6351, 53.5576.



This preview shows how white text looks on a background with the XYZ color 46.6283, 46.6351,

Color Blindness Simulation

Color vision deficiency is a very complex topic, and I could not describe the different causes any better than Wikipedia does, so if you want to learn more, you should check out their [article about color blindness](#).

Dichromacy



Original Color

46.6283, 46.6351, 53.5576

Protanopia

45.2376, 46.7891, 54.7910

Deuteranopia

47.5209, 46.5088, 53.4862



Tritanopia

47.1184, 46.5433, 55.7906

Trichromacy



Original Color

46.6283, 46.6351, 53.5576

Protanomaly

45.6481, 46.7125, 54.1874

Deuteranomaly

47.1975, 46.6342, 53.5274

Tritanomaly

47.0087, 46.4994, 55.2129

Monochromacy



Original Color

46.6283, 46.6351, 53.5576

Achromatopsia

45.0092, 47.3531, 51.5676

Achromatomaly

45.4253, 46.9475, 52.0150

CSS Examples

Text

The CSS property to change the color of the text to XYZ 46.6283, 46.6351, 53.5576 is called "color". The color property can be set on classes, ids or directly on the HTML element.

This example shows how text in the color `rgb(192, 178, 187)` looks like.

```
.text, #text, p{  
    color:rgb(192, 178, 187)  
}
```

If you want to add a text shadow in that color use the text-shadow property, you can generate a text shadow directly with our [CSS Text Shadow Generator](#).

Here you see how black text with a 4 pixel rgb(192, 178, 187) colored shadow looks like.

```
.shadow{ text-shadow: 4px 4px 2px rgb(192, 178, 187) }
```

Border

The CSS property to change the border of an element to XYZ 46.6283, 46.6351, 53.5576 is called "border". The border property can be set on classes, ids or directly on the HTML element.

This example shows the color as border, it can be applied via the CSS property "border" or "border-color".

```
.border, #border, table{ border:4px solid rgb(192, 178, 187) }
```


If only the border color should be changed use the property `border-color`.

```
.border{ border-color:rgb(192, 178, 187) }
```

If you want to add a box shadow in that color use:

Here you see how a box with a 4 pixel `rgb(192, 178, 187)` colored shadow looks like.

```
.boxshadow{ -moz-box-shadow:4px 4px 4px  
4px rgb(192, 178, 187); -webkit-box-  
shadow:4px 4px 4px 4px rgb(192, 178, 187);  
box-shadow:4px 4px 4px 4px rgb(192, 178,  
187) }
```

Background

The CSS property to change the background color of an element to XYZ 46.6283, 46.6351, 53.5576 is called "background". The background property can be set on classes, ids or directly on the HTML element.

```
.background, #background, body{  
background: rgb(192, 178, 187) }
```

If only the background color should be changed can be used:

```
.background{ background-color: rgb(192,  
178, 187) }
```

This example shows the color as background, it is applied via the CSS property "background".

To optimize and compress your CSS code, you can use our [online CSS compressor and optimizer](#) based on csstidy. If you want to create a linear or radial gradient as background or border, check our [CSS Gradient Generator](#).

Hey! You found this booklet interesting? Support Converting Colors with the new Membership Option!

The pro membership hides all ads, plus gives you double the colors in the color bucket, and more awesome pro features!

[Learn more, Memberships starting at \\$2.50/m!](#)

**Follow me
on Twitter!**

@ConvertingColor