

Converting Colors

XYZ(46.6173, 45.8074, 46.7197)

Have a look what the booklet for
XYZ(46.6173, 45.8074, 46.7197)
contains.

XYZ(46.6210, 45.8972, 46.9593)	3
<i>Conversions</i>	4
<i>Details</i>	6
<i>Harmonies</i>	12
<i>Previews</i>	24
<i>Color Blindness Simulation</i>	28
<i>CSS Examples</i>	31

Color

**XYZ(46.6210, 45.8972,
46.9593)**

Conversions

Conversions Part 1

Format	Color
Hex	C7AFAF
RGB	199, 175, 175
RGB Percent	78%, 69%, 69%
CMY	0.2196, 0.3137, 0.3137
CMYK	0.00, 0.12, 0.12, 0.22
HSL	0°, 18%, 73%
HSV	0°, 12%, 78%
XYZ	46.6210, 45.8972, 46.9593
YIQ	182.1760, 14.3040, 5.0880

Conversions

Conversions Part 2

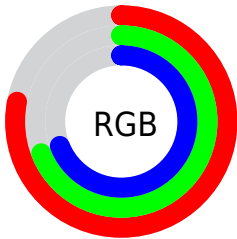
Format	Color
R_{YB}	199, 175, 175
Decimal	13086639
CIE _{Lab}	73.48, 8.64, 3.17
CIE _{LCh}	73, 9.200, 20.136
Yxy	45.8972, 0.3343, 0.3291
Android (android.graphics.Color)	4291276719 (0xFFC7AFAF)
YUV	182.1760, -3.5378, 14.7546
Hunter-Lab	67.7475, 4.2782, 6.3262

Details

The XYZ color **46.6210, 45.8972, 46.9593** is a light color, and the websafe version is hex **CC9999**. A complement of this color would be **48.4111, 54.0832, 61.9208**, and the grayscale version is **44.5736, 46.8948, 51.0685**.

A 20% lighter version of the original color is **84.0988, 84.1250, 86.6682**, and **22.3352, 21.6157, 21.7340** is the 20% darker color. If you saturate the color by 10%, you get **41.2176, 37.9907, 36.2155**, and if you desaturate by 10%, it is **52.8857, 55.0642, 59.4124**.

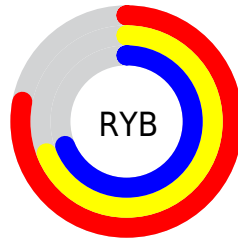
Distribution



Red (78%)

Green (69%)

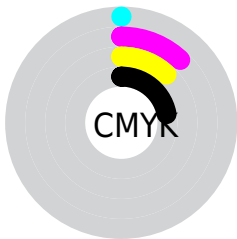
Blue (69%)



Red (78%)

Yellow (69%)

Blue (69%)

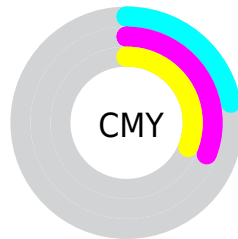


Cyan (0%)

Magenta (12%)

Yellow (12%)

Black (22%)



Cyan (22%)

Magenta (31%)

Yellow (31%)

Brightness & Saturation Gradients

These gradients show how the XYZ color 46.6210, 45.8972, 46.9593 changes by changing the brightness by 10 percent. The first figure shows a shift by +10% for each color and the second figure -10%.

Similar to the brightness gradients but the following saturation gradients show a change of the XYZ color 46.6210, 45.8972, 46.9593 by changing the saturation by 10% instead.

■ 46.6210, 45.8972,
46.9593

■ 46.6210, 45.8972,
46.9593

363.9739,
370.3952, 391.0411

■ 32.9428, 32.1647,
32.6494

■ 84.3698, 84.0651,
87.0022

■ 22.2417, 21.4873,
21.5891

109.1712,
109.2694, 113.5723

■ 14.1522, 13.4807,
13.3598

138.4109,
139.0663, 145.0661

■ 8.3090, 7.7604,
7.5432

172.4545,
173.8403, 181.9023

■ 4.3468, 3.9420,
3.7205

211.6673,
213.9758, 224.4993

■ 1.9001, 1.6412,
1.4733

256.4145,

■ 0.5769, 0.3851,

259.8572, 273.2758

0.1979

307.0616,
311.8689, 328.6502

■ 0.0000, 0.0000,
0.0000

■ 46.6210, 45.8972,
46.9593

■ 46.6210, 45.8972,
46.9593

■ 41.2176, 37.9907,
36.2155

■ 52.8857, 55.0642,
59.4124

■ 36.6341, 31.2839,
27.1036

■ 60.0429, 65.5369,
73.6416

■ 32.8318, 25.7201,
19.5447

■ 68.1271, 77.3659,
89.7138

■ 29.7670, 21.2354,
13.4522

■ 77.1697, 90.5973,
107.6916

■ 27.3920, 17.7600,
8.7312

■ 77.3634, 90.8822,
108.0723

■ 25.6534, 15.2157,
5.2752

■ 24.4898, 13.5129,
2.9627

■ 23.8282, 12.5445,
1.6479

■ 23.5537, 12.1429,
1.1024

Harmonies

Analogous

The Analogous color harmony consists of three colors that are next to each other on the color wheel.



46.7724, 45.8972, 51.5216



46.6210, 45.8972, 46.9593



45.6556, 45.8972, 43.4212

Triad

The Triadic color harmony groups three colors that are evenly spaced from another and form a triangle on the color wheel.



46.6210, 45.8972, 46.9593



41.2714, 45.8972, 44.4599



43.0913, 45.8972, 59.3102

Complementary

The Complementary color scheme is a pair of colors which are on the opposite of each other on the color wheel.



46.6210, 45.8972, 46.9593



48.4111, 54.0832, 61.9208

Split Complementary

Split-complementary colors differ from the complementary color scheme. The scheme consists of three colors, the original color and two neighbors of the complement color.



41.6534, 45.8972, 57.1555



46.6210, 45.8972, 46.9593



40.6200, 45.8972, 48.4582

Square

The Square scheme is like the rectangle color scheme, but the four colors are evenly spaced on the color wheel.



46.6210, 45.8972, 46.9593



42.5581, 45.8972, 42.0414



40.7581, 45.8972, 53.1156



44.7074, 45.8972, 58.8470

Rectangle

The Rectangle color scheme consists of four colors that form a rectangle on the color wheel.



46.6210, 45.8972, 46.9593



44.6933, 45.8972, 42.0285



40.7581, 45.8972, 53.1156



42.5717, 45.8972, 58.8632

Sweetspot

The Sweet Spot groups the original color and five complimentary colors.



46.6223, 45.8992, 46.9603



90.2833, 93.0251, 99.4234



49.1925, 46.9262, 60.4982



19.1386, 19.6394, 20.9115



0.0000, 0.0000, 0.0000



20.3446, 21.4041, 23.3091

Same Dimension

The Same Dimension uses a secret algorithm to generate beautiful new colors.



46.6223, 45.8992, 46.9603



79.4770, 77.2128, 77.9398



49.0619, 50.7785, 47.7735



10.6340, 10.6372, 11.0555



15.1455, 7.8082, 0.7089



0.7172, 0.3698, 0.0336

Inverse Universe

The Inverse Universe completely reimagines the original color for something new.



48.4111, 54.0832, 61.9208



83.1121, 93.8432, 108.3408



45.7589, 48.7787, 61.0367



10.9466, 12.0673, 13.6698



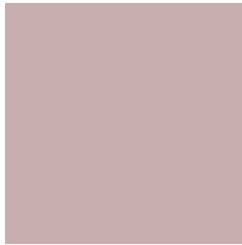
19.7572, 28.9083, 39.2829



0.9355, 1.3689, 1.8601

Previews

White Background



This preview shows how the XYZ color 46.6210, 45.8972, 46.9593 looks on a white background.

Color Contrast Check

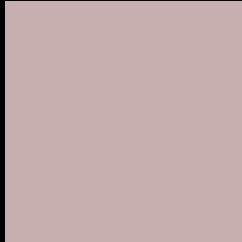
Large Text (above 18pt) WCAG AA × Fail

Any Text WCAG AA × Fail

Large Text (above 18pt) WCAG AAA × Fail

Any Text WCAG AAA × Fail

Black Background



This preview shows how the XYZ color 46.6210, 45.8972, 46.9593 looks on a black background.

Color Contrast Check

Large Text (above 18pt) WCAG AA ✓ Pass

Any Text WCAG AA ✓ Pass

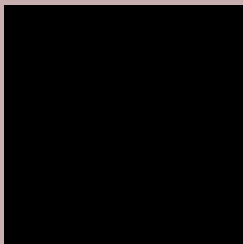
Large Text (above 18pt) WCAG AAA ✓ Pass

Any Text WCAG AAA ✓ Pass

If you want to check with other color combinations, try the [Color Contrast Checker](#).

XYZ 46.6210, 45.8972, 46.9593

Background



This preview shows how black text looks on a background with the XYZ color 46.6210, 45.8972, 46.9593.



This preview shows how white text looks on a background with the XYZ color 46.6210, 45.8972,

Color Blindness Simulation

Color vision deficiency is a very complex topic, and I could not describe the different causes any better than Wikipedia does, so if you want to learn more, you should check out their [article about color blindness](#).

Dichromacy



Original Color

46.6210, 45.8972, 46.9593

Protanopia

44.1243, 46.0472, 48.6819

Deuteranopia

46.8873, 46.0344, 46.9718



Tritanopia

48.0006, 45.8925, 53.3419

Trichromacy



Original Color

46.6210, 45.8972, 46.9593

Protanomaly

44.8425, 45.8339, 48.0784

Deuteranomaly

46.8873, 46.0344, 46.9718

Tritanomaly

47.5027, 45.9704, 51.1692

Monochromacy



Original Color

46.6210, 45.8972, 46.9593

Achromatopsia

44.4628, 46.7784, 50.9417

Achromatomaly

44.9958, 46.1862, 49.1911

CSS Examples

Text

The CSS property to change the color of the text to XYZ 46.6210, 45.8972, 46.9593 is called "color". The color property can be set on classes, ids or directly on the HTML element.

This example shows how text in the color `rgb(199, 175, 175)` looks like.

```
.text, #text, p{  
    color:rgb(199, 175, 175)  
}
```

If you want to add a text shadow in that color use the text-shadow property, you can generate a text shadow directly with our [CSS Text Shadow Generator](#).

Here you see how black text with a 4 pixel rgb(199, 175, 175) colored shadow looks like.

```
.shadow{ text-shadow: 4px 4px 2px rgb(199, 175, 175) }
```

Border

The CSS property to change the border of an element to XYZ 46.6210, 45.8972, 46.9593 is called "border". The border property can be set on classes, ids or directly on the HTML element.

This example shows the color as border, it can be applied via the CSS property "border" or "border-color".

```
.border, #border, table{ border:4px solid rgb(199, 175, 175) }
```


If only the border color should be changed use the property border-color.

```
.border{ border-color:rgb(199, 175, 175) }
```

If you want to add a box shadow in that color use:

Here you see how a box with a 4 pixel rgb(199, 175, 175) colored shadow looks like.

```
.boxshadow{ -moz-box-shadow:4px 4px 4px  
4px rgb(199, 175, 175); -webkit-box-  
shadow:4px 4px 4px 4px rgb(199, 175, 175);  
box-shadow:4px 4px 4px 4px rgb(199, 175,  
175) }
```

Background

The CSS property to change the background color of an element to XYZ 46.6210, 45.8972, 46.9593 is called "background". The background property can be set on classes, ids or directly on the HTML element.

```
.background, #background, body{  
background: rgb(199, 175, 175) }
```

If only the background color should be changed can be used:

```
.background{ background-color: rgb(199,  
175, 175) }
```

This example shows the color as background, it is applied via the CSS property "background".

To optimize and compress your CSS code, you can use our [online CSS compressor and optimizer](#) based on csstidy. If you want to create a linear or radial gradient as background or border, check our [CSS Gradient Generator](#).

Hey! You found this booklet interesting? Support Converting Colors with the new Membership Option!

The pro membership hides all ads, plus gives you double the colors in the color bucket, and more awesome pro features!

[Learn more, Memberships starting at \\$2.50/m!](#)

**Follow me
on Twitter!**

@ConvertingColor