

Converting Colors

XYZ(46.7493, 45.6955, 43.0386)

Have a look what the booklet for
XYZ(46.7493, 45.6955, 43.0386)
contains.

XYZ(46.7397, 45.7586, 42.9281)	3
<i>Conversions</i>	4
<i>Details</i>	6
<i>Harmonies</i>	12
<i>Previews</i>	24
<i>Color Blindness Simulation</i>	28
<i>CSS Examples</i>	31

Color

**XYZ(46.7397, 45.7586,
42.9281)**

Conversions

Conversions Part 1

Format	Color
Hex	CBAEA7
RGB	203, 174, 167
RGB Percent	80%, 68%, 65%
CMY	0.2039, 0.3176, 0.3451
CMYK	0.00, 0.14, 0.18, 0.20
HSL	12°, 26%, 73%
HSV	12°, 18%, 80%
XYZ	46.7397, 45.7586, 42.9281
YIQ	181.8730, 19.5310, 3.9710

Conversions

Conversions Part 2

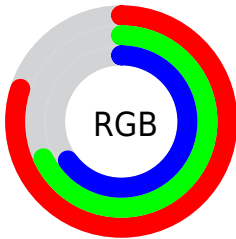
Format	Color
R _Y B	203, 176, 167
Decimal	13348519
CIE Lab	73.39, 9.36, 7.47
CIE LCh	73, 11.973, 38.574
Yxy	45.7586, 0.3451, 0.3379
Android (android.graphics.Color)	4291538599 (0xFFCBAEA7)
YUV	181.8730, -7.3324, 18.5284
Hunter-Lab	67.6451, 4.9565, 9.7257

Details

The XYZ color **46.7397, 45.7586, 42.9281** is a light color, and the websafe version is hex **CC9999**. A complement of this color would be **46.4555, 52.0060, 64.0900**, and the grayscale version is **44.4265, 46.7401, 50.9000**.

A 20% lighter version of the original color is **82.4441, 82.5725, 80.7001**, and **22.2668, 21.4528, 19.1869** is the 20% darker color. If you saturate the color by 10%, you get **42.0398, 39.1297, 32.8181**, and if you desaturate by 10%, it is **52.1213, 53.2786, 54.7198**.

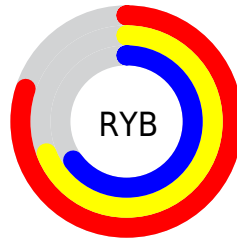
Distribution



Red (80%)

Green (68%)

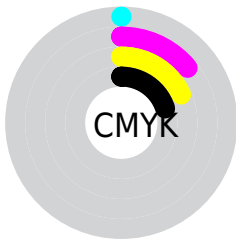
Blue (65%)



Red (80%)

Yellow (69%)

Blue (65%)

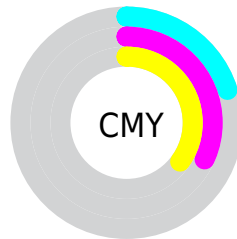


Cyan (0%)

Magenta (14%)

Yellow (18%)

Black (20%)



Cyan (20%)

Magenta (32%)

Yellow (35%)

Brightness & Saturation Gradients

These gradients show how the XYZ color 46.7397, 45.7586, 42.9281 changes by changing the brightness by 10 percent. The first figure shows a shift by +10% for each color and the second figure -10%.

Similar to the brightness gradients but the following saturation gradients show a change of the XYZ color 46.7397, 45.7586, 42.9281 by changing the saturation by 10% instead.

■ 46.7397, 45.7586,
42.9281

■ 46.7397, 45.7586,
42.9281

364.4408,
369.8373, 374.2285

■ 33.0370, 32.0554,
29.4977

■ 84.5461, 83.8576,
80.8875

■ 22.3142, 21.4038,
19.2089

■ 109.3804,
109.0222, 106.2537

■ 14.2058, 13.4195,
11.6429

138.6561,
138.7760, 136.4355

■ 8.3466, 7.7180,
6.3815

172.7384,
173.5034, 171.8515

■ 4.3712, 3.9151,
3.0059

211.9926,
213.5889, 212.9203

■ 1.9142, 1.6262,
1.0976

256.7842,

■ 0.5851, 0.3751,

259.4167, 260.0604

0.0000

307.4785,
311.3714, 313.6903

■ 0.0000, 0.0000,
0.0000

■ 46.7397, 45.7586,
42.9281

■ 46.7397, 45.7586,
42.9281

■ 42.0398, 39.1297,
32.8181

■ 52.1213, 53.2786,
54.7198

■ 37.9903, 33.3527,
24.3101

■ 58.2067, 61.7146,
68.2621

■ 34.5632, 28.3945,
17.3223

■ 65.0217, 71.0985,
83.6235

■ 31.7267, 24.2178,
11.7645

■ 72.5894, 81.4586,
100.8682

■ 29.4464, 20.7819,
7.5368

■ 78.4388, 91.4366,
108.1226

■ 27.6839, 18.0428,
4.5265

■ 26.3955, 15.9511,
2.6018

■ 25.5251, 14.4489,
1.5757

■ 25.3706, 14.1802,
1.3999

Harmonies

Analogous

The Analogous color harmony consists of three colors that are next to each other on the color wheel.



47.6259, 45.7586, 48.1122



46.7397, 45.7586, 42.9281



44.9902, 45.7586, 39.7768

Triad

The Triadic color harmony groups three colors that are evenly spaced from another and form a triangle on the color wheel.



46.7397, 45.7586, 42.9281



39.8260, 45.7586, 45.7007



44.0994, 45.7586, 62.2102

Complementary

The Complementary color scheme is a pair of colors which are on the opposite of each other on the color wheel.



46.7397, 45.7586, 42.9281



46.4555, 52.0060, 64.0900

Split Complementary

Split-complementary colors differ from the complementary color scheme. The scheme consists of three colors, the original color and two neighbors of the complement color.



42.0278, 45.7586, 61.4333



46.7397, 45.7586, 42.9281



39.6049, 45.7586, 51.5746

Square

The Square scheme is like the rectangle color scheme, but the four colors are evenly spaced on the color wheel.



46.7397, 45.7586, 42.9281



41.0127, 45.7586, 41.2852



40.3987, 45.7586, 57.4200



46.0696, 45.7586, 59.4642

Rectangle

The Rectangle color scheme consists of four colors that form a rectangle on the color wheel.



46.7397, 45.7586, 42.9281



43.5932, 45.7586, 39.0932



40.3987, 45.7586, 57.4200



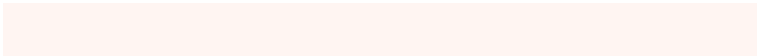
43.3913, 45.7586, 62.3566

Sweetspot

The Sweet Spot groups the original color and five complimentary colors.



46.7409, 45.7607, 42.9291



89.8755, 92.8277, 97.3820



48.4572, 44.3383, 58.4682



19.0867, 19.6601, 20.5104



0.0000, 0.0000, 0.0000



20.3446, 21.4041, 23.3091

Same Dimension

The Same Dimension uses a secret algorithm to generate beautiful new colors.



46.7409, 45.7607, 42.9291



75.3461, 72.5192, 65.5627



50.3661, 53.0109, 44.1374



11.3861, 11.5611, 11.7108



16.1967, 9.1263, 0.9079



0.8893, 0.5784, 0.0648

Inverse Universe

The Inverse Universe completely reimagines the original color for something new.



46.4555, 52.0060, 64.0900



74.7847, 84.7522, 107.0250



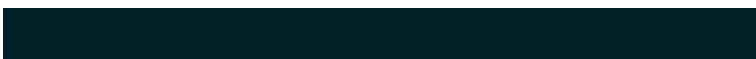
42.7165, 44.5281, 62.8437



11.3506, 12.3417, 14.3543



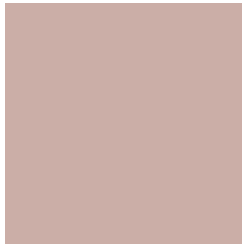
15.3167, 19.6574, 38.9433



0.8389, 1.1116, 2.0253

Previews

White Background



This preview shows how the XYZ color 46.7397, 45.7586, 42.9281 looks on a white background.

Color Contrast Check

Large Text (above 18pt) WCAG AA × Fail

Any Text WCAG AA × Fail

Large Text (above 18pt) WCAG AAA × Fail

Any Text WCAG AAA × Fail

Black Background



This preview shows how the XYZ color 46.7397, 45.7586, 42.9281 looks on a black background.

Color Contrast Check

Large Text (above 18pt) WCAG AA ✓ Pass

Any Text WCAG AA ✓ Pass

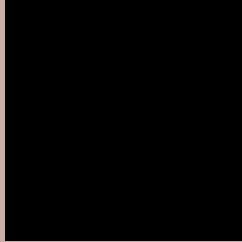
Large Text (above 18pt) WCAG AAA ✓ Pass

Any Text WCAG AAA ✓ Pass

If you want to check with other color combinations, try the [Color Contrast Checker](#).

XYZ 46.7397, 45.7586, 42.9281

Background



This preview shows how black text looks on a background with the XYZ color 46.7397, 45.7586, 42.9281.



This preview shows how white text looks on a background with the XYZ color 46.7397, 45.7586,

Color Blindness Simulation

Color vision deficiency is a very complex topic, and I could not describe the different causes any better than Wikipedia does, so if you want to learn more, you should check out their [article about color blindness](#).

Dichromacy



Original Color

46.7397, 45.7586, 42.9281

Protanopia

43.8267, 45.9839, 44.5961

Deuteranopia

46.7397, 45.7586, 42.9281



Tritanopia

48.4967, 45.6077, 52.1461

Trichromacy



Original Color

46.7397, 45.7586, 42.9281

Protanomaly

44.8201, 45.9118, 44.0357

Deuteranomaly

46.7397, 45.7586, 42.9281

Tritanomaly

47.6902, 45.5568, 48.3993

Monochromacy



Original Color

46.7397, 45.7586, 42.9281

Achromatopsia

44.4628, 46.7784, 50.9417

Achromatomaly

45.2911, 46.3617, 48.1566

CSS Examples

Text

The CSS property to change the color of the text to XYZ 46.7397, 45.7586, 42.9281 is called "color". The color property can be set on classes, ids or directly on the HTML element.

This example shows how text in the color `rgb(203, 174, 167)` looks like.

```
.text, #text, p{  
    color:rgb(203, 174, 167)  
}
```

If you want to add a text shadow in that color use the text-shadow property, you can generate a text shadow directly with our [CSS Text Shadow Generator](#).

Here you see how black text with a 4 pixel rgb(203, 174, 167) colored shadow looks like.

```
.shadow{ text-shadow: 4px 4px 2px rgb(203, 174, 167) }
```

Border

The CSS property to change the border of an element to XYZ 46.7397, 45.7586, 42.9281 is called "border". The border property can be set on classes, ids or directly on the HTML element.

This example shows the color as border, it can be applied via the CSS property "border" or "border-color".

```
.border, #border, table{ border:4px solid rgb(203, 174, 167) }
```


If only the border color should be changed use the property `border-color`.

```
.border{ border-color:rgb(203, 174, 167) }
```

If you want to add a box shadow in that color use:

Here you see how a box with a 4 pixel `rgb(203, 174, 167)` colored shadow looks like.

```
.boxshadow{ -moz-box-shadow:4px 4px 4px  
4px rgb(203, 174, 167); -webkit-box-  
shadow:4px 4px 4px 4px rgb(203, 174, 167);  
box-shadow:4px 4px 4px 4px rgb(203, 174,  
167) }
```

Background

The CSS property to change the background color of an element to XYZ 46.7397, 45.7586, 42.9281 is called "background". The background property can be set on classes, ids or directly on the HTML element.

```
.background, #background, body{  
background: rgb(203, 174, 167) }
```

If only the background color should be changed can be used:

```
.background{ background-color: rgb(203,  
174, 167) }
```

This example shows the color as background, it is applied via the CSS property "background".

To optimize and compress your CSS code, you can use our [online CSS compressor and optimizer](#) based on csstidy. If you want to create a linear or radial gradient as background or border, check our [CSS Gradient Generator](#).

Hey! You found this booklet interesting? Support Converting Colors with the new Membership Option!

The pro membership hides all ads, plus gives you double the colors in the color bucket, and more awesome pro features!

[Learn more, Memberships starting at \\$2.50/m!](#)

**Follow me
on Twitter!**

@ConvertingColor