

# Converting Colors

XYZ(46.7816, 42.3499, 34.4414)

Have a look what the booklet for  
XYZ(46.7816, 42.3499, 34.4414)  
contains.

<b>XYZ(46.8652, 42.4435, 34.5765)</b> .....	3
<b><i>Conversions</i></b> .....	4
<b><i>Details</i></b> .....	6
<b><i>Harmonies</i></b> .....	12
<b><i>Previews</i></b> .....	24
<b><i>Color Blindness Simulation</i></b> .....	28
<b><i>CSS Examples</i></b> .....	31

# Color

**XYZ(46.8652, 42.4435,  
34.5765)**

# Conversions

## Conversions Part 1

<b>Format</b>	<b>Color</b>
Hex	D9A196
RGB	217, 161, 150
RGB Percent	85%, 63%, 59%
CMY	0.1490, 0.3686, 0.4118
CMYK	0.00, 0.26, 0.31, 0.15
HSL	10°, 47%, 72%
HSV	10°, 31%, 85%
XYZ	46.8652, 42.4435, 34.5765
YIQ	176.4900, 36.9070, 8.4510

# Conversions

## Conversions Part 2

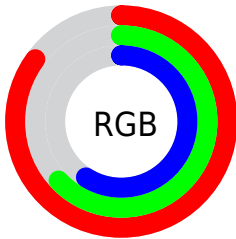
Format	Color
RYB	217, 163, 150
Decimal	14262678
CIELab	71.18, 19.25, 13.85
CIELCh	71, 23.719, 35.738
Yxy	42.4435, 0.3783, 0.3426
Android (android.graphics.Color)	4292452758 (0xFFD9A196)
YUV	176.4900, -13.0596, 35.5273
Hunter-Lab	65.1487, 14.3952, 14.1370

# Details

The XYZ color **46.8652, 42.4435, 34.5765** is a light color, and the websafe version is hex **CC9999**. A complement of this color would be **47.1726, 55.6346, 73.8981**, and the grayscale version is **41.5763, 43.7415, 47.6345**.

A 20% lighter version of the original color is **76.6950, 74.7314, 67.5091**, and **22.4187, 19.4152, 14.3703** is the 20% darker color. If you saturate the color by 10%, you get **42.3344, 35.9240, 25.2289**, and if you desaturate by 10%, it is **52.1815, 50.0158, 45.7832**.

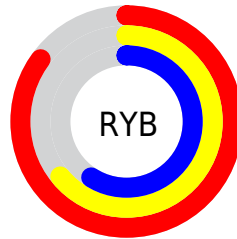
# Distribution



Red (85%)

Green (63%)

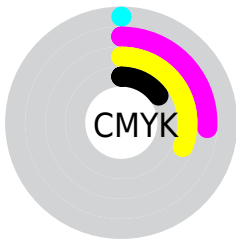
Blue (59%)



Red (85%)

Yellow (64%)

Blue (59%)

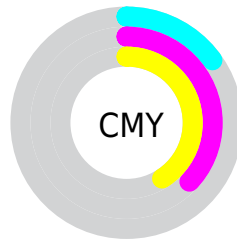


Cyan (0%)

Magenta (26%)

Yellow (31%)

Black (15%)



Cyan (15%)

Magenta (37%)


Yellow (41%)


# Brightness & Saturation Gradients

These gradients show how the XYZ color 46.8652, 42.4435, 34.5765 changes by changing the brightness by 10 percent. The first figure shows a shift by +10% for each color and the second figure -10%.


Similar to the brightness gradients but the following saturation gradients show a change of the XYZ color 46.8652, 42.4435, 34.5765 by changing the saturation by 10% instead.





 46.8652, 42.4435,  
34.5765


 46.8652, 42.4435,  
34.5765


364.9341,  
356.3181, 337.5423

 33.1366, 29.4487,  
23.0559


 84.7323, 78.8704,  
67.9733

 22.3908, 19.4205,  
14.4291


 109.6016,  
103.0713, 90.6865

 14.2626, 11.9745,  
8.2776


138.9151,  
131.7764, 117.9678

 8.3864, 6.7263,  
4.1828

173.0383,  
165.3700, 150.2355

 4.3971, 3.2916,  
1.7261

212.3364,  
204.2366, 187.9083

 1.9291, 1.2858,  
0.3785

257.1748,

 0.5937, 0.1301,

248.7606, 231.4047

0.0000

307.9189,  
299.3263, 281.1432

0.0000, 0.0000,  
0.0000

46.8652, 42.4435,  
34.5765

46.8652, 42.4435,  
34.5765

42.3344, 35.9240,  
25.2289

52.1815, 50.0158,  
45.7832

38.5482, 30.4049,  
17.6372

58.3151, 58.6785,  
58.9396

35.4670, 25.8378,  
11.6916

65.2999, 68.4749,  
74.1335

33.0460, 22.1684,  
7.2694

73.1670, 79.4438,  
91.4465

31.2350, 19.3366,  
4.2300

81.3769, 91.3948,  
107.9597

■ 29.9764, 17.2746,  
2.4070

■ 82.4254, 93.4918,  
108.3092

■ 29.2354, 15.9919,  
1.5459

# Harmonies

## Analogous

The Analogous color harmony consists of three colors that are next to each other on the color wheel.



48.4297, 42.4435, 44.0605



46.8652, 42.4435, 34.5765



43.5624, 42.4435, 28.9996

# Triad

The Triadic color harmony groups three colors that are evenly spaced from another and form a triangle on the color wheel.



46.8652, 42.4435, 34.5765



33.7697, 42.4435, 37.7941



41.1099, 42.4435, 71.5796

# Complementary

The Complementary color scheme is a pair of colors which are on the opposite of each other on the color wheel.



46.8652, 42.4435, 34.5765



47.1726, 55.6346, 73.8981

# Split Complementary

Split-complementary colors differ from the complementary color scheme. The scheme consists of three colors, the original color and two neighbors of the complement color.



37.2830, 42.4435, 69.1672



46.8652, 42.4435, 34.5765



33.2076, 42.4435, 48.4360

# Square

The Square scheme is like the rectangle color scheme, but the four colors are evenly spaced on the color wheel.



46.8652, 42.4435, 34.5765



36.0417, 42.4435, 30.6327



34.4528, 42.4435, 60.2067



44.9698, 42.4435, 66.3442



# Rectangle

The Rectangle color scheme consists of four colors that form a rectangle on the color wheel.



46.8652, 42.4435, 34.5765



40.9116, 42.4435, 27.6491



34.4528, 42.4435, 60.2067



39.7763, 42.4435, 71.6454

# Sweetspot

The Sweet Spot groups the original color and five complimentary colors.



46.8663, 42.4455, 34.5774



85.7561, 86.9760, 88.6494



50.7783, 41.0674, 64.2502



18.0544, 18.1933, 18.3234



0.0000, 0.0000, 0.0000



20.3446, 21.4041, 23.3091



# Same Dimension

The Same Dimension uses a secret algorithm to generate beautiful new colors.



46.8663, 42.4455, 34.5774



63.1963, 54.9291, 40.8282



53.3124, 55.3376, 36.7260



13.2280, 13.3953, 13.6139



17.7489, 9.7834, 0.9529



1.2040, 0.7422, 0.0798



# Inverse Universe

The Inverse Universe completely reimagines the original color for something new.



47.1726, 55.6346, 73.8981



63.6916, 76.7889, 106.0726



40.1325, 41.5543, 71.5514



13.2533, 14.4464, 16.7420



17.6947, 23.2589, 43.2952

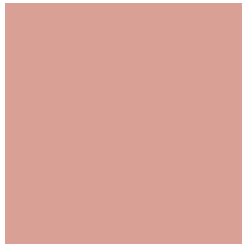


1.1959, 1.6059, 2.8214



# Previews

## White Background



This preview shows how the XYZ color 46.8652, 42.4435, 34.5765 looks on a white background.

## Color Contrast Check

Large Text (above 18pt) WCAG AA × Fail

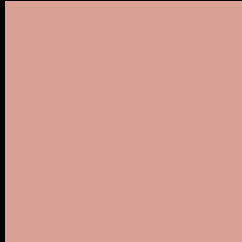
Any Text WCAG AA × Fail

Large Text (above 18pt) WCAG AAA × Fail

Any Text WCAG AAA × Fail



# Black Background



This preview shows how the XYZ color 46.8652, 42.4435, 34.5765 looks on a black background.

## Color Contrast Check

Large Text (above 18pt) WCAG AA ✓ Pass

Any Text WCAG AA ✓ Pass

Large Text (above 18pt) WCAG AAA ✓ Pass

Any Text WCAG AAA ✓ Pass

If you want to check with other color combinations, try the [Color Contrast Checker](#).

**XYZ 46.8652, 42.4435, 34.5765**

## **Background**



This preview shows how black text looks on a background with the XYZ color 46.8652, 42.4435, 34.5765.



This preview shows how white text looks on a background with the XYZ color 46.8652, 42.4435,

34.5765.

# Color Blindness Simulation

Color vision deficiency is a very complex topic, and I could not describe the different causes any better than Wikipedia does, so if you want to learn more, you should check out their [article about color blindness](#).

## Dichromacy



### Original Color

46.8652, 42.4435, 34.5765

### Protanopia

40.5133, 42.6515, 37.9956

### Deuteranopia

43.5148, 42.5927, 34.3615



## Tritanopia

48.6960, 42.4161, 43.6508

# Trichromacy



## Original Color

46.8652, 42.4435, 34.5765

## Protanomaly

42.5264, 42.3111, 36.4973

## Deuteranomaly

44.6121, 42.3456, 34.2560

## Tritanomaly

47.9224, 42.3460, 40.2981

# Monochromacy



## Original Color

46.8652, 42.4435, 34.5765

## Achromatopsia

41.2663, 43.4154, 47.2793

## Achromatomaly

43.0238, 42.9922, 42.5899

# CSS Examples

## Text

The CSS property to change the color of the text to XYZ 46.8652, 42.4435, 34.5765 is called "color". The color property can be set on classes, ids or directly on the HTML element.

This example shows how text in the color `rgb(217, 161, 150)` looks like.

```
.text, #text, p{  
    color:rgb(217, 161, 150)  
}
```

If you want to add a text shadow in that color use the text-shadow property, you can generate a text shadow directly with our [CSS Text Shadow Generator](#).

Here you see how black text with a 4 pixel rgb(217, 161, 150) colored shadow looks like.

```
.shadow{ text-shadow: 4px 4px 2px rgb(217, 161, 150) }
```

## Border

The CSS property to change the border of an element to XYZ 46.8652, 42.4435, 34.5765 is called "border". The border property can be set on classes, ids or directly on the HTML element.

This example shows the color as border, it can be applied via the CSS property "border" or "border-color".

```
.border, #border, table{ border:4px solid rgb(217, 161, 150) }
```



If only the border color should be changed use the property `border-color`.

```
.border{ border-color:rgb(217, 161, 150) }
```

If you want to add a box shadow in that color use:

Here you see how a box with a 4 pixel `rgb(217, 161, 150)` colored shadow looks like.

```
.boxshadow{ -moz-box-shadow:4px 4px 4px  
4px rgb(217, 161, 150); -webkit-box-  
shadow:4px 4px 4px 4px rgb(217, 161, 150);  
box-shadow:4px 4px 4px 4px rgb(217, 161,  
150) }
```

# Background

The CSS property to change the background color of an element to XYZ 46.8652, 42.4435, 34.5765 is called "background". The background property can be set on classes, ids or directly on the HTML element.

```
.background, #background, body{  
background: rgb(217, 161, 150) }
```

If only the background color should be changed can be used:

```
.background{ background-color: rgb(217,  
161, 150) }
```

This example shows the color as background, it is applied via the CSS property "background".

To optimize and compress your CSS code, you can use our [online CSS compressor and optimizer](#) based on csstidy. If you want to create a linear or radial gradient as background or border, check our [CSS Gradient Generator](#).

Hey! You found this booklet interesting? Support Converting Colors with the new Membership Option!

The pro membership hides all ads, plus gives you double the colors in the color bucket, and more awesome pro features!

**[Learn more, Memberships starting at \\$2.50/m!](#)**

**Follow me  
on Twitter!**

@ConvertingColor