

# Converting Colors

XYZ(46.7980, 44.6906, 22.8163)

Have a look what the booklet for  
XYZ(46.7980, 44.6906, 22.8163)  
contains.

<b>XYZ(46.8556, 44.8525, 22.7108)</b> .....	3
<b><i>Conversions</i></b> .....	4
<b><i>Details</i></b> .....	6
<b><i>Harmonies</i></b> .....	12
<b><i>Previews</i></b> .....	24
<b><i>Color Blindness Simulation</i></b> .....	28
<b><i>CSS Examples</i></b> .....	31

# **Color**

**XYZ(46.8556, 44.8525,  
22.7108)**

# Conversions

## Conversions Part 1

<b>Format</b>	<b>Color</b>
Hex	DCA974
RGB	220, 169, 116
RGB Percent	86%, 66%, 45%
CMY	0.1373, 0.3372, 0.5451
CMYK	0.00, 0.23, 0.47, 0.14
HSL	31°, 60%, 66%
HSV	31°, 47%, 86%
XYZ	46.8556, 44.8525, 22.7108
YIQ	178.2070, 47.4090, -5.6710

# Conversions

## Conversions Part 2

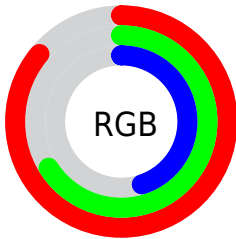
<b>Format</b>	<b>Color</b>
<b>R<sub>YB</sub></b>	216, 220, 116
Decimal	14461300
CIE <sub>Lab</sub>	72.79, 12.25, 34.48
CIE <sub>LCh</sub>	73, 36.594, 70.448
Yxy	44.8525, 0.4095, 0.3920
Android (android.graphics.Color)	4292651380 (0xFFDCA974)
YUV	178.2070, -30.6681, 36.6525
Hunter-Lab	66.9720, 7.6829, 26.7746

# Details

The XYZ color **46.8556, 44.8525, 22.7108** is a light color, and the websafe version is hex **CC9966**. A complement of this color would be **33.9389, 36.5164, 72.9698**, and the grayscale version is **42.5672, 44.7840, 48.7698**.

A 20% lighter version of the original color is **75.0571, 77.4359, 48.5268**, and **22.4787, 20.9144, 8.1623** is the 20% darker color. If you saturate the color by 10%, you get **43.7998, 40.5520, 16.1089**, and if you desaturate by 10%, it is **50.3823, 49.6097, 30.9656**.

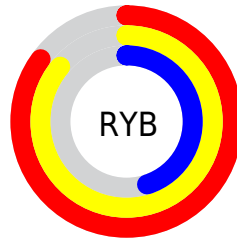
# Distribution



Red (86%)

Green (66%)

Blue (45%)



Red (85%)

Yellow (86%)

Blue (45%)

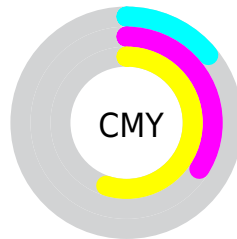


Cyan (0%)

Magenta (23%)

Yellow (47%)

Black (14%)



Cyan (14%)

Magenta (34%)

Yellow (55%)

# Brightness & Saturation Gradients

These gradients show how the XYZ color 46.8556, 44.8525, 22.7108 changes by changing the brightness by 10 percent. The first figure shows a shift by +10% for each color and the second figure -10%.

Similar to the brightness gradients but the following saturation gradients show a change of the XYZ color 46.8556, 44.8525, 22.7108 by changing the saturation by 10% instead.



■ 46.8556, 44.8525,  
22.7108

■ 46.8556, 44.8525,  
22.7108

364.8964,  
366.1759, 279.3097

■ 33.1290, 31.3413,  
14.1768

■ 84.7181, 82.4990,  
48.8352

■ 22.3850, 20.8588,  
8.1036

■ 109.5847,  
107.4031, 67.2627

■ 14.2582, 13.0209,  
4.0726

■ 138.8953,  
136.8736, 89.8251

■ 8.3834, 7.4429,  
1.6652

173.0153,  
171.2949, 116.9409

■ 4.3951, 3.7406,  
0.3368

212.3101,  
211.0513, 149.0288

■ 1.9280, 1.5295,  
0.0000

257.1449,

■ 0.5930, 0.3094,

256.5274, 186.5072

0.0000

307.8853,  
308.1074, 229.7946

■ 0.0000, 0.0000,  
0.0000

■ 46.8556, 44.8525,  
22.7108

■ 46.8556, 44.8525,  
22.7108

■ 43.7998, 40.5520,  
16.1089

■ 50.3823, 49.6097,  
30.9656

■ 41.1858, 36.6852,  
11.0414

■ 54.4000, 54.8327,  
40.9750

■ 38.9860, 33.2360,  
7.3782


■ 58.9314, 60.5382,  
52.8359


■ 37.1673, 30.1843,  
4.9659

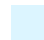
■ 63.9969, 66.7401,  
66.6369


■ 35.6866, 27.5059,  
3.6006

■ 69.6153, 73.4516,  
82.4611

 35.3232, 26.8317,  
3.3173

 75.8048, 80.6853,  
100.3868

 80.0719, 87.4491,  
107.2669

 83.3252, 93.9557,  
108.3513

# Harmonies

## Analogous

The Analogous color harmony consists of three colors that are next to each other on the color wheel.



52.6301, 44.8525, 29.4579



46.8556, 44.8525, 22.7108



40.4517, 44.8525, 21.8581

# Triad

The Triadic color harmony groups three colors that are evenly spaced from another and form a triangle on the color wheel.



46.8556, 44.8525, 22.7108



31.7008, 44.8525, 55.4668



51.0664, 44.8525, 80.6290

# Complementary

The Complementary color scheme is a pair of colors which are on the opposite of each other on the color wheel.



46.8556, 44.8525, 22.7108



33.9389, 36.5164, 72.9698

# Split Complementary

Split-complementary colors differ from the complementary color scheme. The scheme consists of three colors, the original color and two neighbors of the complement color.



44.8871, 44.8525, 92.0069



46.8556, 44.8525, 22.7108



33.9860, 44.8525, 75.2621

# Square

The Square scheme is like the rectangle color scheme, but the four colors are evenly spaced on the color wheel.



46.8556, 44.8525, 22.7108



32.1149, 44.8525, 38.0292



38.6682, 44.8525, 89.8298



55.2235, 44.8525, 61.5193



# Rectangle

The Rectangle color scheme consists of four colors that form a rectangle on the color wheel.



46.8556, 44.8525, 22.7108



36.7296, 44.8525, 24.4398



38.6682, 44.8525, 89.8298



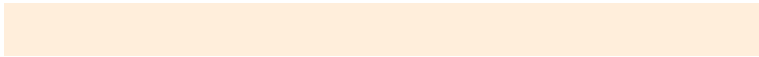
49.1328, 44.8525, 85.6764

# Sweetspot

The Sweet Spot groups the original color and five complimentary colors.



46.8567, 44.8547, 22.7117



84.4934, 87.2456, 79.6119



42.8288, 30.5340, 40.6825



17.7659, 18.2802, 16.1801



0.0000, 0.0000, 0.0000



20.3446, 21.4041, 23.3091



# Same Dimension

The Same Dimension uses a secret algorithm to generate beautiful new colors.



46.8567, 44.8547, 22.7117



61.1197, 56.5468, 22.3454



58.2609, 67.6631, 26.5131



13.6019, 14.1432, 13.7386



20.8428, 15.9711, 1.9842



1.4365, 1.2071, 0.1573



# Inverse Universe

The Inverse Universe completely reimagines the original color for something new.



33.9389, 36.5164, 72.9698



40.9447, 43.5281, 100.8515



26.3665, 21.3716, 70.4456



12.8632, 13.6661, 16.6120



10.8320, 9.5335, 41.0076



0.7879, 0.7898, 2.6854



# Previews

## White Background



This preview shows how the XYZ color 46.8556, 44.8525, 22.7108 looks on a white background.

## Color Contrast Check

Large Text (above 18pt) WCAG AA × Fail

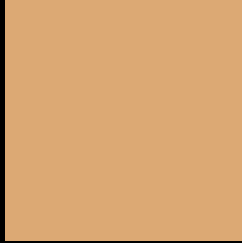
Any Text WCAG AA × Fail

Large Text (above 18pt) WCAG AAA × Fail

Any Text WCAG AAA × Fail



# Black Background



This preview shows how the XYZ color 46.8556, 44.8525, 22.7108 looks on a black background.

## Color Contrast Check

Large Text (above 18pt) WCAG AA ✓ Pass

Any Text WCAG AA ✓ Pass

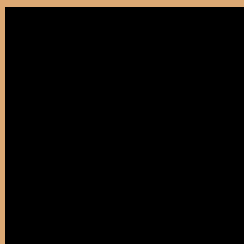
Large Text (above 18pt) WCAG AAA ✓ Pass

Any Text WCAG AAA ✓ Pass

If you want to check with other color combinations, try the [Color Contrast Checker](#).

**XYZ 46.8556, 44.8525, 22.7108**

## **Background**



This preview shows how black text looks on a background with the XYZ color 46.8556, 44.8525, 22.7108.



This preview shows how white text looks on a background with the XYZ color 46.8556, 44.8525,



# Color Blindness Simulation

Color vision deficiency is a very complex topic, and I could not describe the different causes any better than Wikipedia does, so if you want to learn more, you should check out their [article about color blindness](#).

## Dichromacy



### Original Color

46.8556, 44.8525, 22.7108

### Protanopia

41.7584, 45.0656, 24.2669

### Deuteranopia

45.7396, 44.8338, 22.7661



## Tritanopia

51.6116, 44.9042, 45.9915

# Trichromacy



## Original Color

46.8556, 44.8525, 22.7108

## Protanomaly

43.2883, 44.6884, 23.7969

## Deuteranomaly

46.1424, 44.7621, 22.7310

## Tritanomaly

49.6363, 44.8982, 36.1871

# Monochromacy



## Original Color

46.8556, 44.8525, 22.7108

## Achromatopsia

42.3164, 44.5201, 48.4824

## Achromatomaly

43.2387, 44.3640, 37.2945

# CSS Examples

## Text

The CSS property to change the color of the text to XYZ 46.8556, 44.8525, 22.7108 is called "color". The color property can be set on classes, ids or directly on the HTML element.

This example shows how text in the color `rgb(220, 169, 116)` looks like.

```
.text, #text, p{  
    color:rgb(220, 169, 116)  
}
```

If you want to add a text shadow in that color use the text-shadow property, you can generate a text shadow directly with our [CSS Text Shadow Generator](#).

Here you see how black text with a 4 pixel rgb(220, 169, 116) colored shadow looks like.

```
.shadow{ text-shadow: 4px 4px 2px rgb(220, 169, 116) }
```

## Border

The CSS property to change the border of an element to XYZ 46.8556, 44.8525, 22.7108 is called "border". The border property can be set on classes, ids or directly on the HTML element.

This example shows the color as border, it can be applied via the CSS property "border" or "border-color".

```
.border, #border, table{ border:4px solid rgb(220, 169, 116) }
```



If only the border color should be changed use the property `border-color`.

```
.border{ border-color:rgb(220, 169, 116) }
```

If you want to add a box shadow in that color use:

Here you see how a box with a 4 pixel `rgb(220, 169, 116)` colored shadow looks like.

```
.boxshadow{ -moz-box-shadow:4px 4px 4px 4px rgb(220, 169, 116); -webkit-box-shadow:4px 4px 4px 4px rgb(220, 169, 116); box-shadow:4px 4px 4px 4px rgb(220, 169, 116) }
```

# Background

The CSS property to change the background color of an element to XYZ 46.8556, 44.8525, 22.7108 is called "background". The background property can be set on classes, ids or directly on the HTML element.

```
.background, #background, body{  
background: rgb(220, 169, 116) }
```

If only the background color should be changed can be used:

```
.background{ background-color: rgb(220,  
169, 116) }
```

This example shows the color as background, it is applied via the CSS property "background".

To optimize and compress your CSS code, you can use our [online CSS compressor and optimizer](#) based on csstidy. If you want to create a linear or radial gradient as background or border, check our [CSS Gradient Generator](#).

Hey! You found this booklet interesting? Support Converting Colors with the new Membership Option!

The pro membership hides all ads, plus gives you double the colors in the color bucket, and more awesome pro features!

**[Learn more, Memberships starting at \\$2.50/m!](#)**

**Follow me  
on Twitter!**

@ConvertingColor