

Converting Colors

XYZ(46.8357, 27.4110, 19.3343)

Have a look what the booklet for
XYZ(46.8357, 27.4110, 19.3343)
contains.

XYZ(46.8412, 27.4185, 19.3465)	3
<i>Conversions</i>	4
<i>Details</i>	6
<i>Harmonies</i>	12
<i>Previews</i>	24
<i>Color Blindness Simulation</i>	28
<i>CSS Examples</i>	31

Color

**XYZ(46.8412, 27.4185,
19.3465)**

Conversions

Conversions Part 1

Format	Color
Hex	FF4A74
RGB	255, 74, 116
RGB Percent	100%, 29%, 45%
CMY	0.0000, 0.7098, 0.5451
CMYK	0.00, 0.71, 0.55, 0.00
HSL	346°, 100%, 65%
HSV	346°, 71%, 100%
XYZ	46.8412, 27.4185, 19.3465
YIQ	132.9070, 94.3940, 51.4340

Conversions

Conversions Part 2

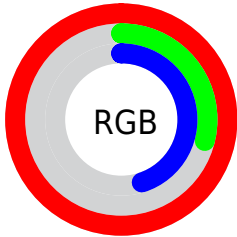
Format	Color
R_{YB}	255, 74, 116
Decimal	16730740
CIE _{Lab}	59.36, 70.12, 17.49
CIE _{LCh}	59, 72.265, 14.009
Yxy	27.4185, 0.5004, 0.2929
Android (android.graphics.Color)	4294920820 (0xFFFF4A74)
YUV	132.9070, -8.3352, 107.0756
Hunter-Lab	52.3627, 68.0431, 14.7479

Details

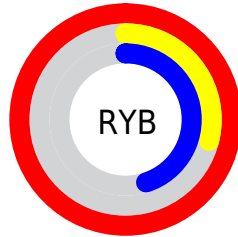
The XYZ color **46.8412, 27.4185, 19.3465** is a dark color, and the websafe version is hex **FF3366**. The color can be described as middle washed rose. A complement of this color would be **50.5965, 77.7808, 75.3047**, and the grayscale version is **22.2675, 23.4271, 25.5122**.

A 20% lighter version of the original color is **56.8330, 41.1373, 41.9907**, and **22.7816, 11.6238, 6.5117** is the 20% darker color. If you saturate the color by 10%, you get **44.4485, 24.2682, 13.5087**, and if you desaturate by 10%, it is **50.1648, 32.0467, 26.6797**.

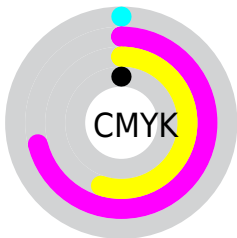
Distribution



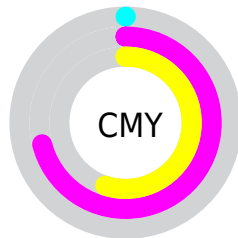
- Red (100%)
- Green (29%)
- Blue (45%)



- Red (100%)
- Yellow (29%)
- Blue (45%)



- Cyan (0%)
- Magenta (71%)
- Yellow (55%)
- Black (0%)



- Cyan (0%)
- Magenta (71%)
- Yellow (55%)

Brightness & Saturation Gradients

These gradients show how the XYZ color 46.8412, 27.4185, 19.3465 changes by changing the brightness by 10 percent. The first figure shows a shift by +10% for each color and the second figure -10%.

Similar to the brightness gradients but the following saturation gradients show a change of the XYZ color 46.8412, 27.4185, 19.3465 by changing the saturation by 10% instead.

46.8412, 27.4185,
19.3465

46.8412, 27.4185,
19.3465

364.8398,
289.6778, 260.8412

33.1176, 17.8878,
11.7416

84.6967, 55.5547,
43.1633

22.3762, 10.8694,
6.4476

109.5593, 74.9290,
60.2122

14.2517, 5.9791,
3.0459

138.8656, 98.3532,
81.2462

8.3788, 2.8324,
1.1181

172.9809,
126.2118, 106.6838

4.3921, 1.0449,
0.0000

212.2706,
158.8892, 136.9435

1.9263, 0.0000,
0.0000

257.1001,

0.5920, 0.0000,

196.7697, 172.4440

0.0000

307.8347,
240.2377, 213.6037

■ 0.0000, 0.0000,
0.0000

■ 46.8412, 27.4185,
19.3465

■ 46.8412, 27.4185,
19.3465

■ 44.4485, 24.2682,
13.5087

■ 50.1648, 32.0467,
26.6797

■ 42.8802, 22.4067,
9.0551


■ 54.5056, 38.3024,
35.6050


■ 42.0334, 21.5774,
6.1088

■ 59.9417, 46.3218,
46.2120

■ 66.5430, 56.2255,
58.5829

■ 74.3735, 68.1233,
72.7946

 83.4924, 82.1167,
88.9191

 93.9550, 98.3002,
107.0247

95.0499, 99.9999,
108.9000

Harmonies

Analogous

The Analogous color harmony consists of three colors that are next to each other on the color wheel.



46.6113, 27.4185, 45.7871



46.8412, 27.4185, 19.3465



40.6787, 27.4185, 6.8964

Triad

The Triadic color harmony groups three colors that are evenly spaced from another and form a triangle on the color wheel.



46.8412, 27.4185, 19.3465



15.7478, 27.4185, 6.4477



21.5565, 27.4185, 107.9043

Complementary

The Complementary color scheme is a pair of colors which are on the opposite of each other on the color wheel.



46.8412, 27.4185, 19.3465



50.5965, 77.7808, 75.3047

Split Complementary

Split-complementary colors differ from the complementary color scheme. The scheme consists of three colors, the original color and two neighbors of the complement color.



15.4456, 27.4185, 79.5582



46.8412, 27.4185, 19.3465



12.6612, 27.4185, 18.1264

Square

The Square scheme is like the rectangle color scheme, but the four colors are evenly spaced on the color wheel.



46.8412, 27.4185, 19.3465



22.0728, 27.4185, 2.9127



12.5652, 27.4185, 43.6086



30.5016, 27.4185, 108.9583

Rectangle

The Rectangle color scheme consists of four colors that form a rectangle on the color wheel.



46.8412, 27.4185, 19.3465



34.4500, 27.4185, 3.7334



12.5652, 27.4185, 43.6086



19.1572, 27.4185, 100.7432

Sweetspot

The Sweet Spot groups the original color and five complimentary colors.



46.8419, 27.4201, 19.3469



74.3531, 68.0920, 72.7578



47.8732, 26.2308, 97.1473



15.4250, 13.8277, 14.6932



0.0000, 0.0000, 0.0000



20.3446, 21.4041, 23.3091

Same Dimension

The Same Dimension uses a secret algorithm to generate beautiful new colors.



46.8419, 27.4201, 19.3469



43.7248, 23.3758, 11.5566



49.4697, 35.7413, 10.7721



18.1820, 18.0561, 19.5756



22.0104, 11.2934, 3.4392



2.1829, 1.1155, 0.5444

Inverse Universe

The Inverse Universe completely reimagines the original color for something new.



46.8419, 27.4201, 19.3469



43.7248, 23.3758, 11.5566



43.1239, 53.1743, 102.5983



18.1820, 18.0561, 19.5756



22.0104, 11.2934, 3.4392



2.1829, 1.1155, 0.5444

Previews

White Background



This preview shows how the XYZ color 46.8412, 27.4185, 19.3465 looks on a white background.

Color Contrast Check

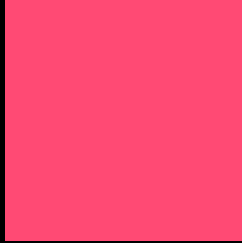
Large Text (above 18pt) WCAG AA ✓ Pass

Any Text WCAG AA × Fail

Large Text (above 18pt) WCAG AAA × Fail

Any Text WCAG AAA × Fail

Black Background



This preview shows how the XYZ color 46.8412, 27.4185, 19.3465 looks on a black background.

Color Contrast Check

Large Text (above 18pt) WCAG AA ✓ Pass

Any Text WCAG AA ✓ Pass

Large Text (above 18pt) WCAG AAA ✓ Pass

Any Text WCAG AAA × Fail

If you want to check with other color combinations, try the [Color Contrast Checker](#).

XYZ 46.8412, 27.4185, 19.3465

Background



This preview shows how black text looks on a background with the XYZ color 46.8412, 27.4185, 19.3465.



This preview shows how white text looks on a background with the XYZ color 46.8412, 27.4185,

Color Blindness Simulation

Color vision deficiency is a very complex topic, and I could not describe the different causes any better than Wikipedia does, so if you want to learn more, you should check out their [article about color blindness](#).

Dichromacy



Original Color

46.8412, 27.4185, 19.3465

Protanopia

26.6796, 27.4773, 32.7516

Deuteranopia

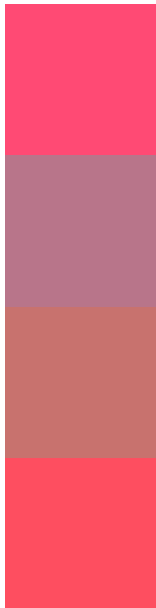
27.9617, 27.3879, 17.7226



Tritanopia

45.0164, 27.2758, 11.4865

Trichromacy



Original Color

46.8412, 27.4185, 19.3465

Protanomaly

30.7159, 24.7479, 27.2027

Deuteranomaly

32.6512, 25.4398, 17.9413

Tritanomaly

45.7088, 27.3641, 13.9390

Monochromacy



Original Color

46.8412, 27.4185, 19.3465

Achromatopsia

22.2940, 23.4551, 25.5426

Achromatomaly

27.7564, 22.4678, 22.9525

CSS Examples

Text

The CSS property to change the color of the text to XYZ 46.8412, 27.4185, 19.3465 is called "color". The color property can be set on classes, ids or directly on the HTML element.

This example shows how text in the color `rgb(255, 74, 116)` looks like.

```
.text, #text, p{  
    color:rgb(255, 74, 116)  
}
```

If you want to add a text shadow in that color use the text-shadow property, you can generate a text shadow directly with our [CSS Text Shadow Generator](#).

Here you see how black text with a 4 pixel rgb(255, 74, 116) colored shadow looks like.

```
.shadow{ text-shadow: 4px 4px 2px rgb(255, 74, 116) }
```

Border

The CSS property to change the border of an element to XYZ 46.8412, 27.4185, 19.3465 is called "border". The border property can be set on classes, ids or directly on the HTML element.

This example shows the color as border, it can be applied via the CSS property "border" or "border-color".

```
.border, #border, table{ border:4px solid rgb(255, 74, 116) }
```


If only the border color should be changed use the property `border-color`.

```
.border{ border-color:rgb(255, 74, 116) }
```

If you want to add a box shadow in that color use:

Here you see how a box with a 4 pixel `rgb(255, 74, 116)` colored shadow looks like.

```
.boxshadow{ -moz-box-shadow:4px 4px 4px 4px rgb(255, 74, 116); -webkit-box-shadow:4px 4px 4px 4px rgb(255, 74, 116); box-shadow:4px 4px 4px 4px rgb(255, 74, 116) }
```

Background

The CSS property to change the background color of an element to XYZ 46.8412, 27.4185, 19.3465 is called "background". The background property can be set on classes, ids or directly on the HTML element.

```
.background, #background, body{  
background: rgb(255, 74, 116) }
```

If only the background color should be changed can be used:

```
.background{ background-color: rgb(255, 74,  
116) }
```

This example shows the color as background, it is applied via the CSS property "background".

To optimize and compress your CSS code, you can use our [online CSS compressor and optimizer](#) based on csstidy. If you want to create a linear or radial gradient as background or border, check our [CSS Gradient Generator](#).

Hey! You found this booklet interesting? Support Converting Colors with the new Membership Option!

The pro membership hides all ads, plus gives you double the colors in the color bucket, and more awesome pro features!

[Learn more, Memberships starting at \\$2.50/m!](#)

**Follow me
on Twitter!**

@ConvertingColor