

# Converting Colors

XYZ(46.8485, 36.6067, 32.6716)

Have a look what the booklet for  
XYZ(46.8485, 36.6067, 32.6716)  
contains.

<b>XYZ(46.7826, 36.5694, 32.6099)</b> .....	3
<b><i>Conversions</i></b> .....	4
<b><i>Details</i></b> .....	6
<b><i>Harmonies</i></b> .....	12
<b><i>Previews</i></b> .....	24
<b><i>Color Blindness Simulation</i></b> .....	28
<b><i>CSS Examples</i></b> .....	31

# Color

**XYZ(46.7826, 36.5694,  
32.6099)**

# Conversions

## Conversions Part 1

Format	Color
Hex	E68894
RGB	230, 136, 148
RGB Percent	90%, 53%, 58%
CMY	0.0980, 0.4666, 0.4196
CMYK	0.00, 0.41, 0.36, 0.10
HSL	352°, 65%, 72%
HSV	352°, 41%, 90%
XYZ	46.7826, 36.5694, 32.6099
YIQ	165.4740, 52.1720, 23.6600

# Conversions

## Conversions Part 2

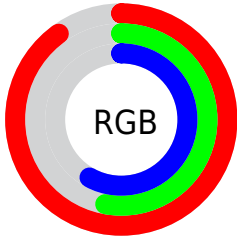
<b>Format</b>	<b>Color</b>
<a href="#">RYB</a>	<a href="#">230, 136, 148</a>
Decimal	<a href="#">15108244</a>
CIELab	<a href="#">66.95, 37.22, 9.21</a>
CIELCh	<a href="#">67, 38.345, 13.898</a>
Yxy	<a href="#">36.5694, 0.4034, 0.3154</a>
Android (android.graphics.Color)	<a href="#">4293298324 (0xFFE68894)</a>
YUV	<a href="#">165.4740, -8.6147, 56.5893</a>
Hunter-Lab	<a href="#">60.4726, 32.2633, 10.3587</a>

# Details

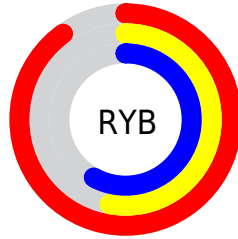
The XYZ color **46.7826, 36.5694, 32.6099** is a light color, and the websafe version is hex **FF9999**. A complement of this color would be **51.1068, 66.8907, 76.5508**, and the grayscale version is **36.0153, 37.8909, 41.2632**.

A 20% lighter version of the original color is **70.5315, 62.7859, 64.2786**, and **22.3412, 15.9744, 13.2151** is the 20% darker color. If you saturate the color by 10%, you get **42.4311, 30.1915, 23.9912**, and if you desaturate by 10%, it is **52.1064, 44.4510, 42.9116**.

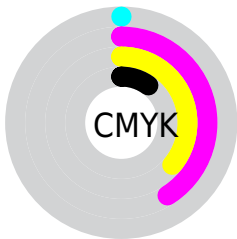
# Distribution



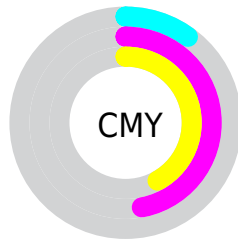
- Red (90%)
- Green (53%)
- Blue (58%)



- Red (90%)
- Yellow (53%)
- Blue (58%)



- Cyan (0%)
- Magenta (41%)
- Yellow (36%)
- Black (10%)



- Cyan (10%)
- Magenta (47%)
- Yellow (42%)

# Brightness & Saturation Gradients

These gradients show how the XYZ color 46.7826, 36.5694, 32.6099 changes by changing the brightness by 10 percent. The first figure shows a shift by +10% for each color and the second figure -10%.

Similar to the brightness gradients but the following saturation gradients show a change of the XYZ color 46.7826, 36.5694, 32.6099 by changing the saturation by 10% instead.



46.7826, 36.5694,  
32.6099

46.7826, 36.5694,  
32.6099

364.6095,  
331.4425, 328.4662

33.0711, 24.8743,  
21.5591

84.6097, 69.9100,  
64.8750

22.3404, 15.9834,  
13.3381

109.4560, 92.3243,  
86.9263

14.2252, 9.5124,  
7.5283

138.7446,  
119.0804, 113.4817

8.3602, 5.0769,  
3.7112

172.8409,  
150.5628, 144.9594

4.3800, 2.2924,  
1.4683

212.1101,  
187.1558, 181.7782

1.9193, 0.7697,  
0.1941

256.9178,

0.5880, 0.0000,

229.2438, 224.3566

0.0000

307.6291,  
277.2112, 273.1131

■ 0.0000, 0.0000,  
0.0000

■ 46.7826, 36.5694,  
32.6099

■ 46.7826, 36.5694,  
32.6099

■ 42.4311, 30.1915,  
23.9912

■ 52.1064, 44.4510,  
42.9116

■ 38.9898, 25.2163,  
16.9637

■ 58.4536, 53.9179,  
54.9773

■ 36.3941, 21.5394,  
11.4299

■ 65.8752, 65.0523,  
68.8852

■ 34.5696, 19.0390,  
7.2805

■ 74.4181, 77.9291,  
84.7082

■ 33.4283, 17.5703,  
4.3910

■ 84.1261, 92.6188,  
102.5152

■ 32.8593, 16.9135,  
2.7181

■ 86.4432, 95.5630,  
108.4972

# Harmonies

## Analogous

The Analogous color harmony consists of three colors that are next to each other on the color wheel.



46.6471, 36.5694, 49.3768



46.7826, 36.5694, 32.6099



43.4547, 36.5694, 21.4838

# Triad

The Triadic color harmony groups three colors that are evenly spaced from another and form a triangle on the color wheel.



46.7826, 36.5694, 32.6099



27.5666, 36.5694, 20.9119



31.7481, 36.5694, 79.1942

# Complementary

The Complementary color scheme is a pair of colors which are on the opposite of each other on the color wheel.



46.7826, 36.5694, 32.6099



51.1068, 66.8907, 76.5508

# Split Complementary

Split-complementary colors differ from the complementary color scheme. The scheme consists of three colors, the original color and two neighbors of the complement color.



27.3069, 36.5694, 66.4082



46.7826, 36.5694, 32.6099



25.0832, 36.5694, 31.5798

# Square

The Square scheme is like the rectangle color scheme, but the four colors are evenly spaced on the color wheel.



46.7826, 36.5694, 32.6099



32.1406, 36.5694, 16.1184



24.9937, 36.5694, 48.0166



37.5140, 36.5694, 79.6993



# Rectangle

The Rectangle color scheme consists of four colors that form a rectangle on the color wheel.



46.7826, 36.5694, 32.6099



39.9138, 36.5694, 17.4265



24.9937, 36.5694, 48.0166



30.0667, 36.5694, 76.0579

# Sweetspot

The Sweet Spot groups the original color and five complimentary colors.



46.7836, 36.5712, 32.6106



82.0493, 80.4050, 84.8162



51.8424, 38.1467, 79.4937



17.2859, 16.7952, 17.6389



0.0000, 0.0000, 0.0000



20.3446, 21.4041, 23.3091



# Same Dimension

The Same Dimension uses a secret algorithm to generate beautiful new colors.



46.7836, 36.5712, 32.6106



54.4172, 39.3137, 31.9125



51.5406, 47.5270, 29.7520



14.4515, 14.3978, 15.3118



18.6275, 9.5852, 1.6674



1.4009, 0.7181, 0.2517



# Inverse Universe

The Inverse Universe completely reimagines the original color for something new.



46.7836, 36.5712, 32.6106



54.4172, 39.3137, 31.9125



44.0726, 50.2186, 82.2333



14.4515, 14.3978, 15.3118



18.6275, 9.5852, 1.6674



1.4009, 0.7181, 0.2517



# Previews

## White Background



This preview shows how the XYZ color 46.7826, 36.5694, 32.6099 looks on a white background.

## Color Contrast Check

Large Text (above 18pt) WCAG AA × Fail

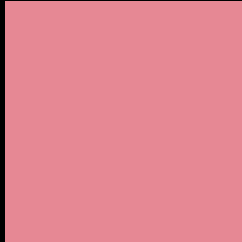
Any Text WCAG AA × Fail

Large Text (above 18pt) WCAG AAA × Fail

Any Text WCAG AAA × Fail



# Black Background



This preview shows how the XYZ color 46.7826, 36.5694, 32.6099 looks on a black background.

## Color Contrast Check

Large Text (above 18pt) WCAG AA ✓ Pass

Any Text WCAG AA ✓ Pass

Large Text (above 18pt) WCAG AAA ✓ Pass

Any Text WCAG AAA ✓ Pass

If you want to check with other color combinations, try the [Color Contrast Checker](#).

**XYZ 46.7826, 36.5694, 32.6099**

## **Background**



This preview shows how black text looks on a background with the XYZ color 46.7826, 36.5694, 32.6099.



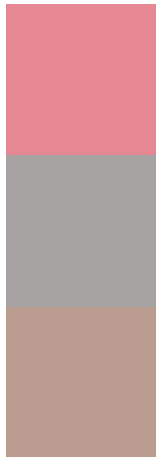
This preview shows how white text looks on a background with the XYZ color 46.7826, 36.5694,

32.6099.

# Color Blindness Simulation

Color vision deficiency is a very complex topic, and I could not describe the different causes any better than Wikipedia does, so if you want to learn more, you should check out their [article about color blindness](#).

## Dichromacy



### Original Color

46.7826, 36.5694, 32.6099

### Protanopia

35.3447, 36.9100, 39.4439

### Deuteranopia

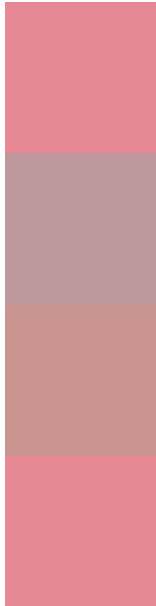
37.3407, 36.5667, 31.4756



## Tritanopia

46.6256, 36.5066, 31.7832

# Trichromacy



## Original Color

46.7826, 36.5694, 32.6099

## Protanomaly

38.4633, 36.0356, 36.8266

## Deuteranomaly

40.2154, 36.0958, 31.6357

## Tritanomaly

46.7037, 36.5379, 32.1947

# Monochromacy



## Original Color

46.7826, 36.5694, 32.6099

## Achromatopsia

35.7637, 37.6262, 40.9749

## Achromatomaly

38.7999, 36.4332, 37.7882

# CSS Examples

## Text

The CSS property to change the color of the text to XYZ 46.7826, 36.5694, 32.6099 is called "color". The color property can be set on classes, ids or directly on the HTML element.

This example shows how text in the color `rgb(230, 136, 148)` looks like.

```
.text, #text, p{  
    color:rgb(230, 136, 148)  
}
```

If you want to add a text shadow in that color use the text-shadow property, you can generate a text shadow directly with our [CSS Text Shadow Generator](#).

Here you see how black text with a 4 pixel rgb(230, 136, 148) colored shadow looks like.

```
.shadow{ text-shadow: 4px 4px 2px rgb(230, 136, 148) }
```

## Border

The CSS property to change the border of an element to XYZ 46.7826, 36.5694, 32.6099 is called "border". The border property can be set on classes, ids or directly on the HTML element.

This example shows the color as border, it can be applied via the CSS property "border" or "border-color".

```
.border, #border, table{ border:4px solid rgb(230, 136, 148) }
```



If only the border color should be changed use the property `border-color`.

```
.border{ border-color:rgb(230, 136, 148) }
```

If you want to add a box shadow in that color use:

Here you see how a box with a 4 pixel `rgb(230, 136, 148)` colored shadow looks like.

```
.boxshadow{ -moz-box-shadow:4px 4px 4px  
4px rgb(230, 136, 148); -webkit-box-  
shadow:4px 4px 4px 4px rgb(230, 136, 148);  
box-shadow:4px 4px 4px 4px rgb(230, 136,  
148) }
```

# Background

The CSS property to change the background color of an element to XYZ 46.7826, 36.5694, 32.6099 is called "background". The background property can be set on classes, ids or directly on the HTML element.

```
.background, #background, body{  
background: rgb(230, 136, 148) }
```

If only the background color should be changed can be used:

```
.background{ background-color: rgb(230,  
136, 148) }
```

This example shows the color as background, it is applied via the CSS property "background".

To optimize and compress your CSS code, you can use our [online CSS compressor and optimizer](#) based on csstidy. If you want to create a linear or radial gradient as background or border, check our [CSS Gradient Generator](#).

Hey! You found this booklet interesting? Support Converting Colors with the new Membership Option!

The pro membership hides all ads, plus gives you double the colors in the color bucket, and more awesome pro features!

**[Learn more, Memberships starting at \\$2.50/m!](#)**

**Follow me  
on Twitter!**

@ConvertingColor