

Converting Colors

XYZ(46.8758, 45.3954, 49.9732)

Have a look what the booklet for
XYZ(46.8758, 45.3954, 49.9732)
contains.

XYZ(46.8372, 45.3655, 50.0039)	3
<i>Conversions</i>	4
<i>Details</i>	6
<i>Harmonies</i>	12
<i>Previews</i>	24
<i>Color Blindness Simulation</i>	28
<i>CSS Examples</i>	31

Color

**XYZ(46.8372, 45.3655,
50.0039)**

Conversions

Conversions Part 1

Format	Color
Hex	C7ADB5
RGB	199, 173, 181
RGB Percent	78%, 68%, 71%
CMY	0.2196, 0.3215, 0.2902
CMYK	0.00, 0.13, 0.09, 0.22
HSL	342°, 19%, 73%
HSV	342°, 13%, 78%
XYZ	46.8372, 45.3655, 50.0039
YIQ	181.6860, 12.9280, 8.0000

Conversions

Conversions Part 2

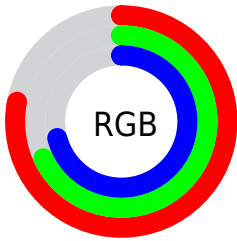
Format	Color
R _Y B	199, 173, 181
Decimal	13086133
CIE Lab	73.13, 10.74, -0.63
CIE LCh	73, 10.760, 356.651
Yxy	45.3655, 0.3294, 0.3190
Android (android.graphics.Color)	4291276213 (0xFFC7ADB5)
YUV	181.6860, -0.3382, 15.1844
Hunter-Lab	67.3539, 6.2577, 3.1305

Details

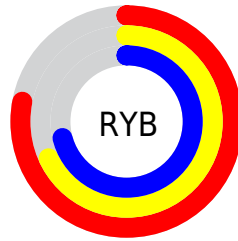
The XYZ color **46.8372, 45.3655, 50.0039** is a light color, and the websafe version is hex **CC9999**. A complement of this color would be **47.0627, 53.4937, 57.1376**, and the grayscale version is **44.2906, 46.5972, 50.7443**.

A 20% lighter version of the original color is **84.2695, 82.8612, 91.6731**, and **22.4107, 21.2530, 23.3431** is the 20% darker color. If you saturate the color by 10%, you get **41.9574, 37.7573, 41.7436**, and if you desaturate by 10%, it is **52.4278, 54.1704, 59.1921**.

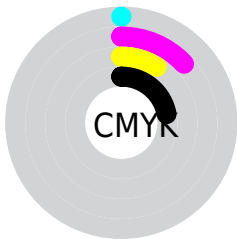
Distribution



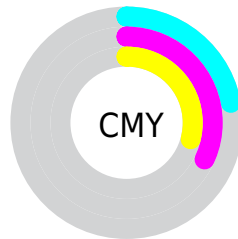
- Red (78%)
- Green (68%)
- Blue (71%)



- Red (78%)
- Yellow (68%)
- Blue (71%)



- Cyan (0%)
- Magenta (13%)
- Yellow (9%)
- Black (22%)



- Cyan (22%)
- Magenta (32%)
- Yellow (29%)

Brightness & Saturation Gradients

These gradients show how the XYZ color 46.8372, 45.3655, 50.0039 changes by changing the brightness by 10 percent. The first figure shows a shift by +10% for each color and the second figure -10%.

Similar to the brightness gradients but the following saturation gradients show a change of the XYZ color 46.8372, 45.3655, 50.0039 by changing the saturation by 10% instead.

■ 46.8372, 45.3655,
50.0039

■ 46.8372, 45.3655,
50.0039

364.8241,
368.2518, 403.4167

■ 33.1144, 31.7454,
35.0453

■ 84.6908, 83.2686,
91.5770

■ 22.3737, 21.1671,
23.4139

109.5523,
108.3204, 119.0286

■ 14.2499, 13.2462,
14.6913

138.8573,
137.9516, 151.4816

■ 8.3776, 7.5983,
8.4588

172.9714,
172.5466, 189.3546

■ 4.3913, 3.8390,
4.2979

212.2597,
212.4897, 233.0660

■ 1.9258, 1.5839,
1.7902

257.0877,

■ 0.5918, 0.3467,

258.1653, 283.0345

0.4215

307.8207,
309.9579, 339.6785

■ 0.0000, 0.0000,
0.0000

■ 46.8372, 45.3655,
50.0039

■ 46.8372, 45.3655,
50.0039

■ 41.9574, 37.7573,
41.7436

■ 52.4278, 54.1704,
59.1921

■ 37.7554, 31.2880,
34.3787

■ 58.7527, 64.2143,
69.3337

■ 34.2015, 25.9042,
27.8789

■ 65.8390, 75.5453,
80.4564

■ 31.2618, 21.5456,
22.2111

■ 73.7114, 88.2067,
92.5863

■ 28.8998, 18.1461,
17.3399

■ 76.5522, 90.5578,
103.8011

■ 27.0743, 15.6319,
13.2270

■ 77.3633, 90.8822,
108.0723

■ 25.7388, 13.9182,
9.8307

■ 24.8377, 12.9030,
7.1041

■ 24.4014, 12.4814,
5.5680

Harmonies

Analogous

The Analogous color harmony consists of three colors that are next to each other on the color wheel.



46.2161, 45.3655, 55.3214



46.8372, 45.3655, 50.0039



46.4382, 45.3655, 44.8860

Triad

The Triadic color harmony groups three colors that are evenly spaced from another and form a triangle on the color wheel.



46.8372, 45.3655, 50.0039



41.5139, 45.3655, 40.6904



41.1575, 45.3655, 58.5791

Complementary

The Complementary color scheme is a pair of colors which are on the opposite of each other on the color wheel.



46.8372, 45.3655, 50.0039



47.0627, 53.4937, 57.1376

Split Complementary

Split-complementary colors differ from the complementary color scheme. The scheme consists of three colors, the original color and two neighbors of the complement color.



39.9610, 45.3655, 54.1969



46.8372, 45.3655, 50.0039



40.1625, 45.3655, 43.9083

Square

The Square scheme is like the rectangle color scheme, but the four colors are evenly spaced on the color wheel.



46.8372, 45.3655, 50.0039



43.3305, 45.3655, 39.7448



39.6021, 45.3655, 48.7917



42.9073, 45.3655, 60.4938

Rectangle

The Rectangle color scheme consists of four colors that form a rectangle on the color wheel.



46.8372, 45.3655, 50.0039



45.6535, 45.3655, 42.2281



39.6021, 45.3655, 48.7917



40.6792, 45.3655, 57.3308

Sweetspot

The Sweet Spot groups the original color and five complimentary colors.



46.8385, 45.3675, 50.0049



90.7655, 93.2173, 101.9650



46.6811, 45.0590, 60.2701



19.2602, 19.6879, 21.5521



0.0000, 0.0000, 0.0000



20.3446, 21.4041, 23.3091

Same Dimension

The Same Dimension uses a secret algorithm to generate beautiful new colors.



46.8385, 45.3675, 50.0049



79.1679, 74.9867, 82.7936



46.9715, 46.9092, 46.1164



10.7660, 10.6898, 11.7509



15.7253, 8.0397, 3.7633



0.7774, 0.3938, 0.3511

Inverse Universe

The Inverse Universe completely reimagines the original color for something new.



46.8385, 45.3675, 50.0049



79.1679, 74.9867, 82.7936



46.8876, 51.6965, 61.5403



10.7660, 10.6898, 11.7509



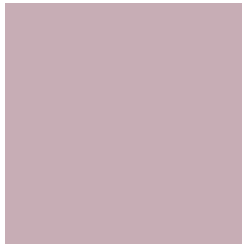
15.7253, 8.0397, 3.7633



0.7774, 0.3938, 0.3511

Previews

White Background



This preview shows how the XYZ color 46.8372, 45.3655, 50.0039 looks on a white background.

Color Contrast Check

Large Text (above 18pt) WCAG AA × Fail

Any Text WCAG AA × Fail

Large Text (above 18pt) WCAG AAA × Fail

Any Text WCAG AAA × Fail

Black Background



This preview shows how the XYZ color 46.8372, 45.3655, 50.0039 looks on a black background.

Color Contrast Check

Large Text (above 18pt) WCAG AA ✓ Pass

Any Text WCAG AA ✓ Pass

Large Text (above 18pt) WCAG AAA ✓ Pass

Any Text WCAG AAA ✓ Pass

If you want to check with other color combinations, try the [Color Contrast Checker](#).

XYZ 46.8372, 45.3655, 50.0039

Background



This preview shows how black text looks on a background with the XYZ color 46.8372, 45.3655, 50.0039.



This preview shows how white text looks on a background with the XYZ color 46.8372, 45.3655,

Color Blindness Simulation

Color vision deficiency is a very complex topic, and I could not describe the different causes any better than Wikipedia does, so if you want to learn more, you should check out their [article about color blindness](#).

Dichromacy



Original Color

46.8372, 45.3655, 50.0039

Protanopia

43.8279, 45.5246, 51.8246

Deuteranopia

46.2415, 45.3441, 50.0312



Tritanopia

47.4349, 45.3296, 52.7038

Trichromacy



Original Color

46.8372, 45.3655, 50.0039

Protanomaly

45.0084, 45.5545, 51.2205

Deuteranomaly

46.5025, 45.4786, 50.0434

Tritanomaly

47.2237, 45.2451, 51.5916

Monochromacy



Original Color

46.8372, 45.3655, 50.0039

Achromatopsia

44.4628, 46.7784, 50.9417

Achromatomaly

45.3026, 46.3090, 50.8068

CSS Examples

Text

The CSS property to change the color of the text to XYZ 46.8372, 45.3655, 50.0039 is called "color". The color property can be set on classes, ids or directly on the HTML element.

This example shows how text in the color `rgb(199, 173, 181)` looks like.

```
.text, #text, p{  
    color:rgb(199, 173, 181)  
}
```

If you want to add a text shadow in that color use the text-shadow property, you can generate a text shadow directly with our [CSS Text Shadow Generator](#).

Here you see how black text with a 4 pixel rgb(199, 173, 181) colored shadow looks like.

```
.shadow{ text-shadow: 4px 4px 2px rgb(199, 173, 181) }
```

Border

The CSS property to change the border of an element to XYZ 46.8372, 45.3655, 50.0039 is called "border". The border property can be set on classes, ids or directly on the HTML element.

This example shows the color as border, it can be applied via the CSS property "border" or "border-color".

```
.border, #border, table{ border:4px solid rgb(199, 173, 181) }
```


If only the border color should be changed use the property `border-color`.

```
.border{ border-color:rgb(199, 173, 181) }
```

If you want to add a box shadow in that color use:

Here you see how a box with a 4 pixel `rgb(199, 173, 181)` colored shadow looks like.

```
.boxshadow{ -moz-box-shadow:4px 4px 4px  
4px rgb(199, 173, 181); -webkit-box-  
shadow:4px 4px 4px 4px rgb(199, 173, 181);  
box-shadow:4px 4px 4px 4px rgb(199, 173,  
181) }
```

Background

The CSS property to change the background color of an element to XYZ 46.8372, 45.3655, 50.0039 is called "background". The background property can be set on classes, ids or directly on the HTML element.

```
.background, #background, body{  
background: rgb(199, 173, 181) }
```

If only the background color should be changed can be used:

```
.background{ background-color: rgb(199,  
173, 181) }
```

This example shows the color as background, it is applied via the CSS property "background".

To optimize and compress your CSS code, you can use our [online CSS compressor and optimizer](#) based on csstidy. If you want to create a linear or radial gradient as background or border, check our [CSS Gradient Generator](#).

Hey! You found this booklet interesting? Support Converting Colors with the new Membership Option!

The pro membership hides all ads, plus gives you double the colors in the color bucket, and more awesome pro features!

[Learn more, Memberships starting at \\$2.50/m!](#)

**Follow me
on Twitter!**

@ConvertingColor