

# Converting Colors

XYZ(46.8798, 47.5501, 50.0699)

Have a look what the booklet for  
XYZ(46.8798, 47.5501, 50.0699)  
contains.

<b>XYZ(46.8076, 47.4071, 49.8635)</b> .....	3
<b><i>Conversions</i></b> .....	4
<b><i>Details</i></b> .....	6
<b><i>Harmonies</i></b> .....	12
<b><i>Previews</i></b> .....	24
<b><i>Color Blindness Simulation</i></b> .....	28
<b><i>CSS Examples</i></b> .....	31

# Color

**XYZ(46.8076, 47.4071,  
49.8635)**

# Conversions

## Conversions Part 1

<b>Format</b>	<b>Color</b>
Hex	C2B4B4
RGB	194, 180, 180
RGB Percent	76%, 71%, 71%
CMY	0.2392, 0.2941, 0.2941
CMYK	0.00, 0.07, 0.07, 0.24
HSL	0°, 10%, 73%
HSV	0°, 7%, 76%
XYZ	46.8076, 47.4071, 49.8635
YIQ	184.1860, 8.3440, 2.9680

# Conversions

## Conversions Part 2

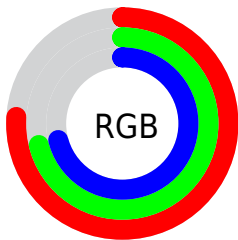
<b>Format</b>	<b>Color</b>
<b>RYB</b>	194, 180, 180
Decimal	12760244
CIELab	74.45, 4.98, 1.79
CIELCh	74, 5.290, 19.748
Yxy	47.4071, 0.3249, 0.3290
Android (android.graphics.Color)	4290950324 (0xFFC2B4B4)
YUV	184.1860, -2.0637, 8.6069
Hunter-Lab	68.8528, 0.8557, 5.2589

# Details

The XYZ color **46.8076, 47.4071, 49.8635** is a light color, and the websafe version is hex **CCCCCC**. A complement of this color would be **47.8517, 52.1811, 58.5894**, and the grayscale version is **45.6716, 48.0501, 52.3266**.

A 20% lighter version of the original color is **84.9194, 86.5563, 91.5882**, and **22.2354, 22.2865, 23.2085** is the 20% darker color. If you saturate the color by 10%, you get **41.3229, 39.3819, 38.9576**, and if you desaturate by 10%, it is **53.1195, 56.6429, 62.4110**.

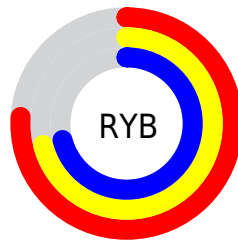
# Distribution



Red (76%)

Green (71%)

Blue (71%)



Red (76%)

Yellow (71%)

Blue (71%)

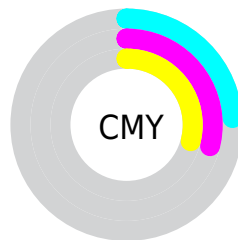


Cyan (0%)

Magenta (7%)

Yellow (7%)

Black (24%)



Cyan (24%)

Magenta (29%)

Yellow (29%)

# Brightness & Saturation Gradients

These gradients show how the XYZ color 46.8076, 47.4071, 49.8635 changes by changing the brightness by 10 percent. The first figure shows a shift by +10% for each color and the second figure -10%.

Similar to the brightness gradients but the following saturation gradients show a change of the XYZ color 46.8076, 47.4071, 49.8635 by changing the saturation by 10% instead.



■ 46.8076, 47.4071,  
49.8635

■ 46.8076, 47.4071,  
49.8635

364.7078,  
376.4372, 402.8517

■ 33.0909, 33.3576,  
34.9345

■ 84.6468, 86.3210,  
91.3668

■ 22.3557, 22.4005,  
23.3293

109.5001,  
111.9541, 118.7783

■ 14.2365, 14.1515,  
14.6293

138.7962,  
142.2173, 151.1876

■ 8.3682, 8.2261,  
8.4159

172.9006,  
177.4949, 189.0134

■ 4.3852, 4.2400,  
4.2706

212.1786,  
218.1713, 232.6741

■ 1.9223, 1.8087,  
1.7750

256.9956,

■ 0.5897, 0.4926,

264.6309, 282.5884

0.4114

307.7168,  
317.2580, 339.1747

■ 0.0000, 0.0000,  
0.0000

■ 46.8076, 47.4071,  
49.8635

■ 46.8076, 47.4071,  
49.8635

■ 41.3229, 39.3819,  
38.9576

■ 53.1195, 56.6429,  
62.4110

■ 36.6275, 32.5113,  
29.6227

■ 60.2867, 67.1300,  
76.6609

■ 32.6861, 26.7440,  
21.7872

■ 68.3409, 78.9149,  
92.6745

■ 29.4596, 22.0227,  
15.3730

■ 76.0584, 90.2095,  
108.0112

■ 26.9050, 18.2846,  
10.2950

■ 24.9751, 15.4604,  
6.4590

■ 23.6163, 13.4718,  
3.7583

■ 22.7659, 12.2272,  
2.0687

■ 22.3371, 11.5995,  
1.2167

# Harmonies

## Analogous

The Analogous color harmony consists of three colors that are next to each other on the color wheel.



46.8883, 47.4071, 52.5589



46.8076, 47.4071, 49.8635



46.2547, 47.4071, 47.7118

# Triad

The Triadic color harmony groups three colors that are evenly spaced from another and form a triangle on the color wheel.



46.8076, 47.4071, 49.8635



43.6735, 47.4071, 48.2977



44.7334, 47.4071, 56.9622

# Complementary

The Complementary color scheme is a pair of colors which are on the opposite of each other on the color wheel.



46.8076, 47.4071, 49.8635



47.8517, 52.1811, 58.5894

# Split Complementary

Split-complementary colors differ from the complementary color scheme. The scheme consists of three colors, the original color and two neighbors of the complement color.



43.8842, 47.4071, 55.7324



46.8076, 47.4071, 49.8635



43.2780, 47.4071, 50.6890

# Square

The Square scheme is like the rectangle color scheme, but the four colors are evenly spaced on the color wheel.



46.8076, 47.4071, 49.8635



44.4421, 47.4071, 46.8301



43.3546, 47.4071, 53.4137



45.6817, 47.4071, 56.7222



# Rectangle

The Rectangle color scheme consists of four colors that form a rectangle on the color wheel.



46.8076, 47.4071, 49.8635



45.6970, 47.4071, 46.8449



43.3546, 47.4071, 53.4137



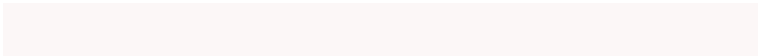
44.4271, 47.4071, 56.7054

# Sweetspot

The Sweet Spot groups the original color and five complimentary colors.



46.8089, 47.4092, 49.8645



90.5424, 94.2875, 101.7477



48.3076, 48.0076, 57.7598



19.8529, 20.6846, 22.3315



0.0000, 0.0000, 0.0000



20.3446, 21.4041, 23.3091

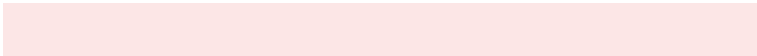


# Same Dimension

The Same Dimension uses a secret algorithm to generate beautiful new colors.



46.8089, 47.4092, 49.8645



82.7761, 82.9237, 86.3070



48.2573, 50.3060, 50.3473



10.0734, 10.0783, 10.4762



14.6279, 7.5416, 0.6847



0.6321, 0.3260, 0.0296

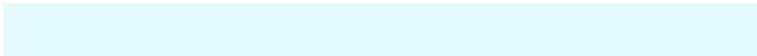


# Inverse Universe

The Inverse Universe completely reimagines the original color for something new.



47.8517, 52.1811, 58.5894



85.1387, 93.7356, 106.0753



46.3310, 49.1397, 58.0825



10.3684, 11.4281, 12.9442



19.0795, 27.9155, 37.9392

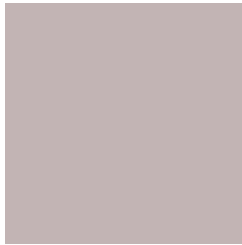


0.8244, 1.2063, 1.6393



# Previews

## White Background



This preview shows how the XYZ color 46.8076, 47.4071, 49.8635 looks on a white background.

## Color Contrast Check

Large Text (above 18pt) WCAG AA × Fail

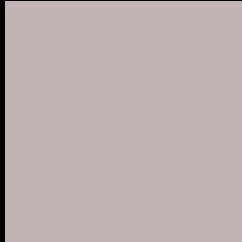
Any Text WCAG AA × Fail

Large Text (above 18pt) WCAG AAA × Fail

Any Text WCAG AAA × Fail



# Black Background



This preview shows how the XYZ color 46.8076, 47.4071, 49.8635 looks on a black background.

## Color Contrast Check

Large Text (above 18pt) WCAG AA ✓ Pass

Any Text WCAG AA ✓ Pass

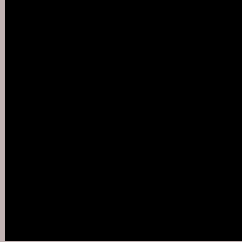
Large Text (above 18pt) WCAG AAA ✓ Pass

Any Text WCAG AAA ✓ Pass

If you want to check with other color combinations, try the [Color Contrast Checker](#).

# XYZ 46.8076, 47.4071, 49.8635

## Background



This preview shows how black text looks on a background with the XYZ color 46.8076, 47.4071, 49.8635.



This preview shows how white text looks on a background with the XYZ color 46.8076, 47.4071,

49.8635.

# Color Blindness Simulation

Color vision deficiency is a very complex topic, and I could not describe the different causes any better than Wikipedia does, so if you want to learn more, you should check out their [article about color blindness](#).

## Dichromacy



### Original Color

46.8076, 47.4071, 49.8635

### Protanopia

45.5620, 47.3569, 50.4555

### Deuteranopia

48.4198, 47.3370, 50.3010



## Tritanopia

48.1998, 47.3823, 56.4745

# Trichromacy



## Original Color

46.8076, 47.4071, 49.8635

## Protanomaly

46.0996, 47.3311, 50.4222

## Deuteranomaly

47.8141, 47.3191, 50.3295

## Tritanomaly

47.7029, 47.4731, 54.2260

# Monochromacy



## Original Color

46.8076, 47.4071, 49.8635

## Achromatopsia

45.5594, 47.9320, 52.1980

## Achromatomaly

46.2198, 47.9772, 51.6242

# CSS Examples

## Text

The CSS property to change the color of the text to XYZ 46.8076, 47.4071, 49.8635 is called "color". The color property can be set on classes, ids or directly on the HTML element.

This example shows how text in the color `rgb(194, 180, 180)` looks like.

```
.text, #text, p{  
    color:rgb(194, 180, 180)  
}
```

If you want to add a text shadow in that color use the text-shadow property, you can generate a text shadow directly with our [CSS Text Shadow Generator](#).

Here you see how black text with a 4 pixel rgb(194, 180, 180) colored shadow looks like.

```
.shadow{ text-shadow: 4px 4px 2px rgb(194, 180, 180) }
```

## Border

The CSS property to change the border of an element to XYZ 46.8076, 47.4071, 49.8635 is called "border". The border property can be set on classes, ids or directly on the HTML element.

This example shows the color as border, it can be applied via the CSS property "border" or "border-color".

```
.border, #border, table{ border:4px solid rgb(194, 180, 180) }
```



If only the border color should be changed use the property `border-color`.

```
.border{ border-color:rgb(194, 180, 180) }
```

If you want to add a box shadow in that color use:

Here you see how a box with a 4 pixel `rgb(194, 180, 180)` colored shadow looks like.

```
.boxshadow{ -moz-box-shadow:4px 4px 4px  
4px rgb(194, 180, 180); -webkit-box-  
shadow:4px 4px 4px 4px rgb(194, 180, 180);  
box-shadow:4px 4px 4px 4px rgb(194, 180,  
180) }
```

# Background

The CSS property to change the background color of an element to XYZ 46.8076, 47.4071, 49.8635 is called "background". The background property can be set on classes, ids or directly on the HTML element.

```
.background, #background, body{  
background: rgb(194, 180, 180) }
```

If only the background color should be changed can be used:

```
.background{ background-color: rgb(194,  
180, 180) }
```

This example shows the color as background, it is applied via the CSS property "background".

To optimize and compress your CSS code, you can use our [online CSS compressor and optimizer](#) based on csstidy. If you want to create a linear or radial gradient as background or border, check our [CSS Gradient Generator](#).

Hey! You found this booklet interesting? Support Converting Colors with the new Membership Option!

The pro membership hides all ads, plus gives you double the colors in the color bucket, and more awesome pro features!

**[Learn more, Memberships starting at \\$2.50/m!](#)**

**Follow me  
on Twitter!**

@ConvertingColor