

Converting Colors

XYZ(46.9026, 44.6714, 44.6800)

Have a look what the booklet for
XYZ(46.9026, 44.6714, 44.6800)
contains.

XYZ(46.9022, 44.6689, 44.6780)	3
<i>Conversions</i>	4
<i>Details</i>	6
<i>Harmonies</i>	12
<i>Previews</i>	24
<i>Color Blindness Simulation</i>	28
<i>CSS Examples</i>	31

Color

**XYZ(46.9022, 44.6689,
44.6780)**

Conversions

Conversions Part 1

Format	Color
Hex	CDAAAB
RGB	205, 170, 171
RGB Percent	80%, 67%, 67%
CMY	0.1961, 0.3333, 0.3294
CMYK	0.00, 0.17, 0.17, 0.20
HSL	358°, 26%, 74%
HSV	358°, 17%, 80%
XYZ	46.9022, 44.6689, 44.6780
YIQ	180.5790, 20.5390, 7.7310

Conversions

Conversions Part 2

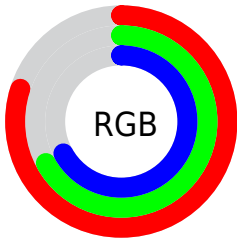
Format	Color
R_{YB}	205, 170, 171
Decimal	13478571
CIE _{Lab}	72.67, 12.90, 4.27
CIE _{LCh}	73, 13.588, 18.298
Yxy	44.6689, 0.3442, 0.3278
Android (android.graphics.Color)	4291668651 (0xFFCDAAAB)
YUV	180.5790, -4.7224, 21.4172
Hunter-Lab	66.8348, 8.3038, 7.1499

Details

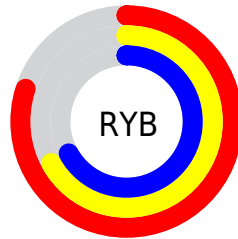
The XYZ color **46.9022, 44.6689, 44.6780** is a light color, and the websafe version is hex **CC9999**. A complement of this color would be **49.3097, 56.5693, 65.4496**, and the grayscale version is **43.7117, 45.9881, 50.0811**.

A 20% lighter version of the original color is **81.8927, 80.6014, 83.1929**, and **22.3859, 20.7728, 20.2825** is the 20% darker color. If you saturate the color by 10%, you get **41.5973, 36.8714, 34.2387**, and if you desaturate by 10%, it is **53.0949, 53.7833, 56.8256**.

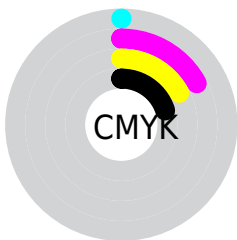
Distribution



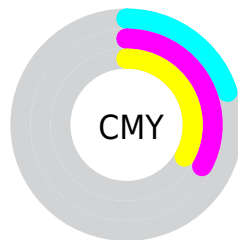
- Red (80%)
- Green (67%)
- Blue (67%)



- Red (80%)
- Yellow (67%)
- Blue (67%)



- Cyan (0%)
- Magenta (17%)
- Yellow (17%)
- Black (20%)





- Cyan (20%)
- Magenta (33%)
- Yellow (33%)

Brightness & Saturation Gradients


These gradients show how the XYZ color 46.9022, 44.6689, 44.6780 changes by changing the brightness by 10 percent. The first figure shows a shift by +10% for each color and the second figure -10%.


Similar to the brightness gradients but the following saturation gradients show a change of the XYZ color 46.9022, 44.6689, 44.6780 by changing the saturation by 10% instead.


 46.9022, 44.6689,
44.6780

 46.9022, 44.6689,
44.6780

365.0795,
365.4309, 381.5899

 33.1660, 31.1967,
30.8628


 84.7872, 82.2233,
83.5503

 22.4135, 20.7487,
20.2368


109.6668,
107.0744, 109.4445

 14.2793, 12.9404,
12.3815


138.9915,
136.4872, 140.2021

 8.3982, 7.3875,
6.8784

173.1266,
170.8461, 176.2416

 4.4047, 3.7056,
3.3089

212.4377,
210.5355, 217.9816

 1.9336, 1.5103,
1.2544

257.2899,

 0.5962, 0.2960,

255.9399, 265.8406

0.0240

308.0487,
307.4435, 320.2372

■ 0.0000, 0.0000,
0.0000

■ 46.9022, 44.6689,
44.6780

■ 46.9022, 44.6689,
44.6780

■ 41.5973, 36.8714,
34.2387

■ 53.0949, 53.7833,
56.8256

■ 37.1360, 30.3243,
25.4284

■ 60.2096, 64.2652,
70.7503

■ 33.4760, 24.9644,
18.1658

■ 68.2831, 76.1698,
86.5204

■ 30.5699, 20.7206,
12.3617

■ 77.3492, 89.5474,
104.2000

■ 28.3650, 17.5141,
7.9174

■ 78.9869, 91.7192,
108.1483

■ 26.8023, 15.2561,
4.7223

■ 25.8127, 13.8426,
2.6485

■ 25.3065, 13.1353,
1.5388

■ 25.2089, 12.9920,
1.3466

Harmonies

Analogous

The Analogous color harmony consists of three colors that are next to each other on the color wheel.



47.0465, 44.6689, 51.3146



46.9022, 44.6689, 44.6780



45.5405, 44.6689, 39.5831

Triad

The Triadic color harmony groups three colors that are evenly spaced from another and form a triangle on the color wheel.



46.9022, 44.6689, 44.6780



39.1647, 44.6689, 40.5100



41.5447, 44.6689, 62.4722

Complementary

The Complementary color scheme is a pair of colors which are on the opposite of each other on the color wheel.



46.9022, 44.6689, 44.6780



49.3097, 56.5693, 65.4496

Split Complementary

Split-complementary colors differ from the complementary color scheme. The scheme consists of three colors, the original color and two neighbors of the complement color.



39.5149, 44.6689, 58.9755



46.9022, 44.6689, 44.6780



38.1751, 44.6689, 46.0539

Square

The Square scheme is like the rectangle color scheme, but the four colors are evenly spaced on the color wheel.



46.9022, 44.6689, 44.6780



41.0506, 44.6689, 37.3345



38.3009, 44.6689, 52.8229



43.8940, 44.6689, 62.0170

Rectangle

The Rectangle color scheme consists of four colors that form a rectangle on the color wheel.



46.9022, 44.6689, 44.6780



44.1529, 44.6689, 37.5558



38.3009, 44.6689, 52.8229



40.8040, 44.6689, 61.7078

Sweetspot

The Sweet Spot groups the original color and five complimentary colors.



46.9034, 44.6709, 44.6789



89.1858, 91.3609, 97.4216



50.2515, 45.9731, 63.9830



18.9198, 19.3051, 20.5199



0.0000, 0.0000, 0.0000



20.3446, 21.4041, 23.3091

Same Dimension

The Same Dimension uses a secret algorithm to generate beautiful new colors.



46.9034, 44.6709, 44.6789



73.9069, 68.8753, 67.4427



50.0630, 51.1413, 45.2655



11.2250, 11.2188, 11.7197



15.6994, 8.0903, 0.8696



0.8145, 0.4192, 0.0692

Inverse Universe

The Inverse Universe completely reimagines the original color for something new.



46.9034, 44.6709, 44.6789



73.9069, 68.8753, 67.4427



45.7247, 49.2075, 64.8459



11.2250, 11.2188, 11.7197



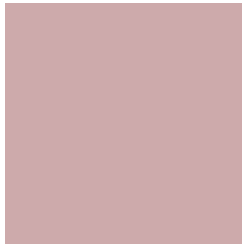
15.6994, 8.0903, 0.8696



0.8145, 0.4192, 0.0692

Previews

White Background



This preview shows how the XYZ color 46.9022, 44.6689, 44.6780 looks on a white background.

Color Contrast Check

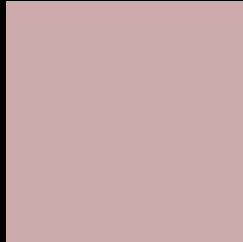
Large Text (above 18pt) WCAG AA × Fail

Any Text WCAG AA × Fail

Large Text (above 18pt) WCAG AAA × Fail

Any Text WCAG AAA × Fail

Black Background



This preview shows how the XYZ color 46.9022, 44.6689, 44.6780 looks on a black background.

Color Contrast Check

Large Text (above 18pt) WCAG AA ✓ Pass

Any Text WCAG AA ✓ Pass

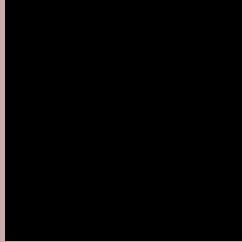
Large Text (above 18pt) WCAG AAA ✓ Pass

Any Text WCAG AAA ✓ Pass

If you want to check with other color combinations, try the [Color Contrast Checker](#).

XYZ 46.9022, 44.6689, 44.6780

Background



This preview shows how black text looks on a background with the XYZ color 46.9022, 44.6689, 44.6780.



This preview shows how white text looks on a background with the XYZ color 46.9022, 44.6689,

Color Blindness Simulation

Color vision deficiency is a very complex topic, and I could not describe the different causes any better than Wikipedia does, so if you want to learn more, you should check out their [article about color blindness](#).

Dichromacy



Original Color

46.9022, 44.6689, 44.6780

Protanopia

42.9497, 44.8810, 46.9567

Deuteranopia

45.6564, 44.5874, 44.7280



Tritanopia

47.7967, 44.4633, 49.7792

Trichromacy



Original Color

46.9022, 44.6689, 44.6780

Protanomaly

44.2052, 44.6631, 46.3354

Deuteranomaly

46.0010, 44.4836, 44.6898

Tritanomaly

47.5774, 44.6721, 47.7099

Monochromacy



Original Color

46.9022, 44.6689, 44.6780

Achromatopsia

43.9204, 46.2077, 50.3202

Achromatomaly

44.8932, 45.5658, 48.0239

CSS Examples

Text

The CSS property to change the color of the text to XYZ 46.9022, 44.6689, 44.6780 is called "color". The color property can be set on classes, ids or directly on the HTML element.

This example shows how text in the color `rgb(205, 170, 171)` looks like.

```
.text, #text, p{  
    color:rgb(205, 170, 171)  
}
```

If you want to add a text shadow in that color use the text-shadow property, you can generate a text shadow directly with our [CSS Text Shadow Generator](#).

Here you see how black text with a 4 pixel rgb(205, 170, 171) colored shadow looks like.

```
.shadow{ text-shadow: 4px 4px 2px rgb(205, 170, 171) }
```

Border

The CSS property to change the border of an element to XYZ 46.9022, 44.6689, 44.6780 is called "border". The border property can be set on classes, ids or directly on the HTML element.

This example shows the color as border, it can be applied via the CSS property "border" or "border-color".

```
.border, #border, table{ border:4px solid rgb(205, 170, 171) }
```


If only the border color should be changed use the property `border-color`.

```
.border{ border-color:rgb(205, 170, 171) }
```

If you want to add a box shadow in that color use:

Here you see how a box with a 4 pixel `rgb(205, 170, 171)` colored shadow looks like.

```
.boxshadow{ -moz-box-shadow:4px 4px 4px  
4px rgb(205, 170, 171); -webkit-box-  
shadow:4px 4px 4px 4px rgb(205, 170, 171);  
box-shadow:4px 4px 4px 4px rgb(205, 170,  
171) }
```

Background

The CSS property to change the background color of an element to XYZ 46.9022, 44.6689, 44.6780 is called "background". The background property can be set on classes, ids or directly on the HTML element.

```
.background, #background, body{  
background: rgb(205, 170, 171) }
```

If only the background color should be changed can be used:

```
.background{ background-color: rgb(205,  
170, 171) }
```

This example shows the color as background, it is applied via the CSS property "background".

To optimize and compress your CSS code, you can use our [online CSS compressor and optimizer](#) based on csstidy. If you want to create a linear or radial gradient as background or border, check our [CSS Gradient Generator](#).

Hey! You found this booklet interesting? Support Converting Colors with the new Membership Option!

The pro membership hides all ads, plus gives you double the colors in the color bucket, and more awesome pro features!

[Learn more, Memberships starting at \\$2.50/m!](#)

**Follow me
on Twitter!**

@ConvertingColor