

Converting Colors

XYZ(46.9042, 31.7792, 24.0663)

Have a look what the booklet for
XYZ(46.9042, 31.7792, 24.0663)
contains.

XYZ(47.0211, 31.9083, 24.1027)	3
<i>Conversions</i>	4
<i>Details</i>	6
<i>Harmonies</i>	12
<i>Previews</i>	24
<i>Color Blindness Simulation</i>	28
<i>CSS Examples</i>	31

Color

**XYZ(47.0211, 31.9083,
24.1027)**

Conversions

Conversions Part 1

Format	Color
Hex	F56D80
RGB	245, 109, 128
RGB Percent	96%, 43%, 50%
CMY	0.0392, 0.5725, 0.4980
CMYK	0.00, 0.56, 0.48, 0.04
HSL	352°, 87%, 69%
HSV	352°, 56%, 96%
XYZ	47.0211, 31.9083, 24.1027
YIQ	151.8300, 74.9570, 34.7410

Conversions

Conversions Part 2

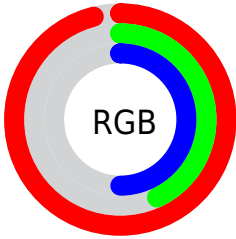
Format	Color
R _Y B	245, 109, 128
Decimal	16084352
CIE Lab	63.27, 53.78, 15.68
CIE LCh	63, 56.019, 16.257
Yxy	31.9083, 0.4564, 0.3097
Android (android.graphics.Color)	4294274432 (0xFFFF56D80)
YUV	151.8300, -11.7482, 81.7101
Hunter-Lab	56.4874, 49.7334, 14.2427

Details

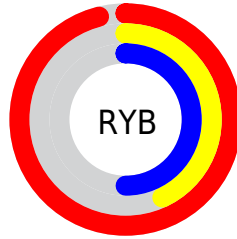
The XYZ color **47.0211, 31.9083, 24.1027** is a light color, and the websafe version is hex **FF6666**. A complement of this color would be **52.6884, 74.0477, 83.4723**, and the grayscale version is **29.7993, 31.3512, 34.1414**.

A 20% lighter version of the original color is **62.8559, 51.1471, 50.2756**, and **22.4516, 13.3011, 8.7812** is the 20% darker color. If you saturate the color by 10%, you get **43.5157, 26.8922, 16.7857**, and if you desaturate by 10%, it is **51.5445, 38.4994, 33.1813**.

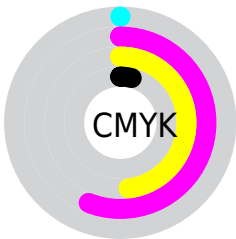
Distribution



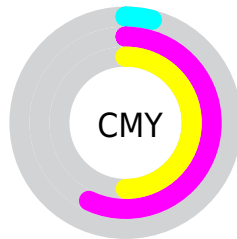
- Red (96%)
- Green (43%)
- Blue (50%)



- Red (96%)
- Yellow (43%)
- Blue (50%)



- Cyan (0%)
- Magenta (56%)
- Yellow (48%)
- Black (4%)



- Cyan (4%)
- Magenta (57%)
- Yellow (50%)

Brightness & Saturation Gradients

These gradients show how the XYZ color 47.0211, 31.9083, 24.1027 changes by changing the brightness by 10 percent. The first figure shows a shift by +10% for each color and the second figure -10%.

Similar to the brightness gradients but the following saturation gradients show a change of the XYZ color 47.0211, 31.9083, 24.1027 by changing the saturation by 10% instead.

47.0211, 31.9083,
24.1027

47.0211, 31.9083,
24.1027

365.5462,
310.7013, 286.6425

33.2604, 21.2915,
15.1969

84.9637, 62.6673,
51.1437

22.4862, 13.3372,
8.8095

109.8762, 83.5783,
70.1159

14.3332, 7.6612,
4.5221

139.2367,
108.6894, 93.2808

8.4360, 3.8789,
1.9159

173.4105,
138.3851, 121.0567

4.4293, 1.6061,
0.5028

212.7630,
173.0497, 153.8624

1.9478, 0.3617,
0.0000

257.6596,

0.6044, 0.0000,

213.0677, 192.1162

0.0000

308.4656,
258.8234, 236.2367

■ 0.0000, 0.0000,
0.0000

■ 47.0211, 31.9083,
24.1027

■ 47.0211, 31.9083,
24.1027

■ 43.5157, 26.8922,
16.7857

■ 51.5445, 38.4994,
33.1813

■ 40.9458, 23.3144,
11.1133

■ 57.1549, 46.7772,
44.1248

■ 39.2195, 21.0236,
6.9564

■ 63.9182, 56.8488,
57.0304

■ 38.2246, 19.8315,
4.1654

■ 71.8942, 68.8114,
71.9879

■ 37.9479, 19.5292,
3.2992

■ 81.1385, 82.7548,
89.0818

91.3809, 98.1184,
108.2841

91.4661, 98.1524,
108.7323

Harmonies

Analogous

The Analogous color harmony consists of three colors that are next to each other on the color wheel.



47.2484, 31.9083, 45.9125



47.0211, 31.9083, 24.1027



41.8555, 31.9083, 12.1158

Triad

The Triadic color harmony groups three colors that are evenly spaced from another and form a triangle on the color wheel.



47.0211, 31.9083, 24.1027



20.7770, 31.9083, 12.7844



26.9203, 31.9083, 94.9576

Complementary

The Complementary color scheme is a pair of colors which are on the opposite of each other on the color wheel.



47.0211, 31.9083, 24.1027



52.6884, 74.0477, 83.4723

Split Complementary

Split-complementary colors differ from the complementary color scheme. The scheme consists of three colors, the original color and two neighbors of the complement color.



21.1388, 31.9083, 75.6491



47.0211, 31.9083, 24.1027



18.0229, 31.9083, 25.5496

Square

The Square scheme is like the rectangle color scheme, but the four colors are evenly spaced on the color wheel.



47.0211, 31.9083, 24.1027



26.3406, 31.9083, 7.7509



18.1429, 31.9083, 48.1275



34.6985, 31.9083, 94.0124

Rectangle

The Rectangle color scheme consists of four colors that form a rectangle on the color wheel.



47.0211, 31.9083, 24.1027



36.7393, 31.9083, 8.4741



18.1429, 31.9083, 48.1275



24.7094, 31.9083, 90.3563

Sweetspot

The Sweet Spot groups the original color and five complimentary colors.



47.0219, 31.9100, 24.1033



77.3123, 73.2186, 76.1847



52.8780, 33.4751, 90.0602



16.1572, 15.0848, 15.5764



0.0000, 0.0000, 0.0000



20.3446, 21.4041, 23.3091

Same Dimension

The Same Dimension uses a secret algorithm to generate beautiful new colors.



47.0219, 31.9100, 24.1033



47.1293, 28.7069, 17.2474



52.4071, 44.4973, 20.2970



16.5934, 16.5202, 17.6053



20.4726, 10.5325, 1.9311



1.8278, 0.9371, 0.3198

Inverse Universe

The Inverse Universe completely reimagines the original color for something new.



47.0219, 31.9100, 24.1033



47.1293, 28.7069, 17.2474



42.8469, 49.9599, 93.7708



16.5934, 16.5202, 17.6053



20.4726, 10.5325, 1.9311



1.8278, 0.9371, 0.3198

Previews

White Background



This preview shows how the XYZ color 47.0211, 31.9083, 24.1027 looks on a white background.

Color Contrast Check

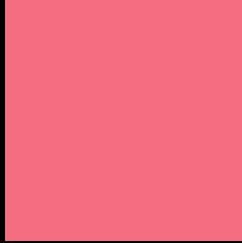
Large Text (above 18pt) WCAG AA × Fail

Any Text WCAG AA × Fail

Large Text (above 18pt) WCAG AAA × Fail

Any Text WCAG AAA × Fail

Black Background



This preview shows how the XYZ color 47.0211, 31.9083, 24.1027 looks on a black background.

Color Contrast Check

Large Text (above 18pt) WCAG AA ✓ Pass

Any Text WCAG AA ✓ Pass

Large Text (above 18pt) WCAG AAA ✓ Pass

Any Text WCAG AAA ✓ Pass

If you want to check with other color combinations, try the [Color Contrast Checker](#).

XYZ 47.0211, 31.9083, 24.1027

Background



This preview shows how black text looks on a background with the XYZ color 47.0211, 31.9083, 24.1027.



This preview shows how white text looks on a background with the XYZ color 47.0211, 31.9083,

Color Blindness Simulation

Color vision deficiency is a very complex topic, and I could not describe the different causes any better than Wikipedia does, so if you want to learn more, you should check out their [article about color blindness](#).

Dichromacy



Original Color

47.0211, 31.9083, 24.1027

Protanopia

30.8818, 32.1849, 33.8628

Deuteranopia

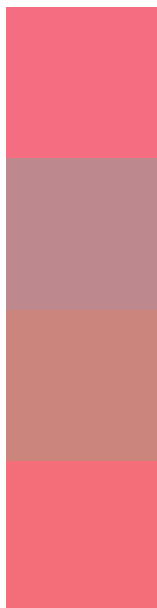
32.5370, 31.8563, 22.8463



Tritanopia

46.2627, 31.9100, 20.8605

Trichromacy



Original Color

47.0211, 31.9083, 24.1027

Protanomaly

34.8899, 30.6933, 30.0721

Deuteranomaly

36.6542, 30.9268, 23.1064

Tritanomaly

46.3970, 31.7901, 22.1031

Monochromacy



Original Color

47.0211, 31.9083, 24.1027

Achromatopsia

29.8446, 31.3989, 34.1934

Achromatomaly

34.0118, 30.0306, 29.9905

CSS Examples

Text

The CSS property to change the color of the text to XYZ 47.0211, 31.9083, 24.1027 is called "color". The color property can be set on classes, ids or directly on the HTML element.

This example shows how text in the color `rgb(245, 109, 128)` looks like.

```
.text, #text, p{  
    color:rgb(245, 109, 128)  
}
```

If you want to add a text shadow in that color use the text-shadow property, you can generate a text shadow directly with our [CSS Text Shadow Generator](#).

Here you see how black text with a 4 pixel rgb(245, 109, 128) colored shadow looks like.

```
.shadow{ text-shadow: 4px 4px 2px rgb(245, 109, 128) }
```

Border

The CSS property to change the border of an element to XYZ 47.0211, 31.9083, 24.1027 is called "border". The border property can be set on classes, ids or directly on the HTML element.

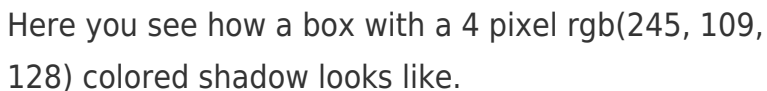
This example shows the color as border, it can be applied via the CSS property "border" or "border-color".

```
.border, #border, table{ border:4px solid rgb(245, 109, 128) }
```


If only the border color should be changed use the property `border-color`.

```
.border{ border-color:rgb(245, 109, 128) }
```

If you want to add a box shadow in that color use:



Here you see how a box with a 4 pixel `rgb(245, 109, 128)` colored shadow looks like.

```
.boxshadow{ -moz-box-shadow:4px 4px 4px 4px rgb(245, 109, 128); -webkit-box-shadow:4px 4px 4px 4px rgb(245, 109, 128); box-shadow:4px 4px 4px 4px rgb(245, 109, 128) }
```

Background

The CSS property to change the background color of an element to XYZ 47.0211, 31.9083, 24.1027 is called "background". The background property can be set on classes, ids or directly on the HTML element.

```
.background, #background, body{  
background: rgb(245, 109, 128) }
```

If only the background color should be changed can be used:

```
.background{ background-color: rgb(245,  
109, 128) }
```

This example shows the color as background, it is applied via the CSS property "background".

To optimize and compress your CSS code, you can use our [online CSS compressor and optimizer](#) based on csstidy. If you want to create a linear or radial gradient as background or border, check our [CSS Gradient Generator](#).

Hey! You found this booklet interesting? Support Converting Colors with the new Membership Option!

The pro membership hides all ads, plus gives you double the colors in the color bucket, and more awesome pro features!

[Learn more, Memberships starting at \\$2.50/m!](#)

**Follow me
on Twitter!**

@ConvertingColor