

Converting Colors

XYZ(46.9551, 46.2992, 54.4869)

Have a look what the booklet for
XYZ(46.9551, 46.2992, 54.4869)
contains.

XYZ(46.9588, 46.1941, 54.5855)	3
<i>Conversions</i>	4
<i>Details</i>	6
<i>Harmonies</i>	12
<i>Previews</i>	24
<i>Color Blindness Simulation</i>	28
<i>CSS Examples</i>	31

Color

**XYZ(46.9588, 46.1941,
54.5855)**

Conversions

Conversions Part 1

Format	Color
Hex	C2B0BD
RGB	194, 176, 189
RGB Percent	76%, 69%, 74%
CMY	0.2392, 0.3098, 0.2588
CMYK	0.00, 0.09, 0.03, 0.24
HSL	317°, 13%, 73%
HSV	317°, 9%, 76%
XYZ	46.9588, 46.1941, 54.5855
YIQ	182.8640, 6.5550, 7.8590

Conversions

Conversions Part 2

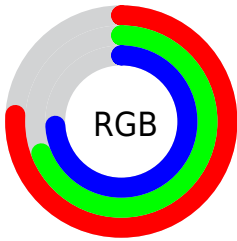
Format	Color
R_{YB}	194, 176, 189
Decimal	12759229
CIE Lab	73.67, 8.76, -4.27
CIE LCh	74, 9.745, 333.986
Yxy	46.1941, 0.3179, 0.3127
Android (android.graphics.Color)	4290949309 (0xFFC2B0BD)
YUV	182.8640, 3.0250, 9.7663
Hunter-Lab	67.9662, 4.3872, -0.0410

Details

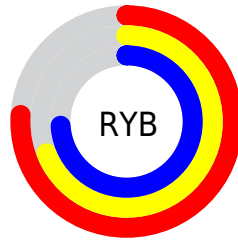
The XYZ color **46.9588, 46.1941, 54.5855** is a light color, and the websafe version is hex **CCCCCC**. A complement of this color would be **45.5385, 51.1512, 51.1915**, and the grayscale version is **44.9178, 47.2570, 51.4628**.

A 20% lighter version of the original color is **85.1217, 84.8150, 98.2707**, and **22.3421, 21.5189, 26.2686** is the 20% darker color. If you saturate the color by 10%, you get **42.8496, 38.8942, 50.3830**, and if you desaturate by 10%, it is **51.6360, 54.5939, 59.0858**.

Distribution



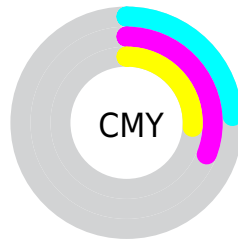
- Red (76%)
- Green (69%)
- Blue (74%)



- Red (76%)
- Yellow (69%)
- Blue (74%)



- Cyan (0%)
- Magenta (9%)
- Yellow (3%)
- Black (24%)



- Cyan (24%)
- Magenta (31%)
- Yellow (26%)

Brightness & Saturation Gradients

These gradients show how the XYZ color 46.9588, 46.1941, 54.5855 changes by changing the brightness by 10 percent. The first figure shows a shift by +10% for each color and the second figure -10%.

Similar to the brightness gradients but the following saturation gradients show a change of the XYZ color 46.9588, 46.1941, 54.5855 by changing the saturation by 10% instead.

■ 46.9588, 46.1941,
54.5855

■ 46.9588, 46.1941,
54.5855

365.3017,
371.5884, 421.5764

■ 33.2109, 32.3990,
38.6736

■ 84.8712, 84.5094,
98.3984

■ 22.4481, 21.6665,
26.2000

109.7665,
109.7984, 127.1365

■ 14.3049, 13.6120,
16.7462

139.1082,
139.6875, 160.9872

■ 8.4162, 7.8513,
9.8937

173.2618,
174.5612, 200.3688

■ 4.4164, 4.0000,
5.2238

212.5926,
214.8037, 245.7000

■ 1.9403, 1.6735,
2.3182

257.4659,

■ 0.6001, 0.4064,

260.7994, 297.3993

0.7414

308.2472,
312.9329, 355.8852

■ 0.0000, 0.0000,
0.0000

■ 46.9588, 46.1941,
54.5855

■ 46.9588, 46.1941,
54.5855

■ 42.8496, 38.8942,
50.3830

■ 51.6360, 54.5939,
59.0858

■ 39.2813, 32.6422,
46.4663

■ 56.8990, 64.1309,
63.8892

■ 36.2304, 27.3909,
42.8271

■ 62.7698, 74.8479,
69.0048

■ 33.6700, 23.0870,
39.4552

■ 69.2680, 86.7838,
74.4401

■ 31.5709, 19.6725,
36.3396

■ 70.3968, 87.9448,
78.1973

■ 29.9006, 17.0826,
33.4683

■ 71.1051, 88.2282,
81.9272

■ 28.6221, 15.2441,
30.8277

■ 71.8365, 88.5207,
85.7786

■ 27.6921, 14.0703,
28.4021

■ 72.5912, 88.8226,
89.7526

■ 27.0337, 13.4080,
26.1646

■ 73.3693, 89.1338,
93.8503

Harmonies

Analogous

The Analogous color harmony consists of three colors that are next to each other on the color wheel.



45.7888, 46.1941, 58.6034



46.9588, 46.1941, 54.5855



47.3031, 46.1941, 49.6393

Triad

The Triadic color harmony groups three colors that are evenly spaced from another and form a triangle on the color wheel.



46.9588, 46.1941, 54.5855



43.6757, 46.1941, 41.3935



41.2095, 46.1941, 55.8036

Complementary

The Complementary color scheme is a pair of colors which are on the opposite of each other on the color wheel.



46.9588, 46.1941, 54.5855



45.5385, 51.1512, 51.1915

Split Complementary

Split-complementary colors differ from the complementary color scheme. The scheme consists of three colors, the original color and two neighbors of the complement color.



40.6757, 46.1941, 50.9615



46.9588, 46.1941, 54.5855



42.0757, 46.1941, 42.8161

Square

The Square scheme is like the rectangle color scheme, but the four colors are evenly spaced on the color wheel.



46.9588, 46.1941, 54.5855



45.3789, 46.1941, 42.2250



40.9887, 46.1941, 46.2402



42.4656, 46.1941, 59.3384

Rectangle

The Rectangle color scheme consists of four colors that form a rectangle on the color wheel.



46.9588, 46.1941, 54.5855



47.0108, 46.1941, 46.5294



40.9887, 46.1941, 46.2402



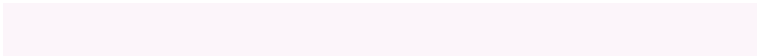
40.9412, 46.1941, 54.2638

Sweetspot

The Sweet Spot groups the original color and five complimentary colors.



46.9601, 46.1961, 54.5865



90.2327, 92.9335, 103.9093



44.2740, 44.7476, 57.3434



19.6071, 20.0765, 22.6085



0.0000, 0.0000, 0.0000



20.3446, 21.4041, 23.3091

Same Dimension

The Same Dimension uses a secret algorithm to generate beautiful new colors.



46.9601, 46.1961, 54.5865



83.5879, 81.0338, 97.4096



46.0337, 45.8255, 49.7079



10.3741, 10.1982, 12.0603



17.7808, 8.8021, 17.2898



0.7963, 0.3915, 0.8945

Inverse Universe

The Inverse Universe completely reimagines the original color for something new.



46.9601, 46.1961, 54.5865



83.5879, 81.0338, 97.4096



46.4702, 51.5239, 56.0977



10.3741, 10.1982, 12.0603



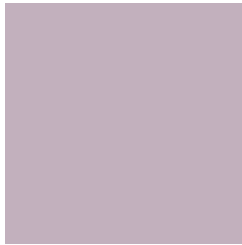
17.7808, 8.8021, 17.2898



0.7963, 0.3915, 0.8945

Previews

White Background



This preview shows how the XYZ color 46.9588, 46.1941, 54.5855 looks on a white background.

Color Contrast Check

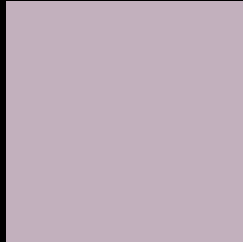
Large Text (above 18pt) WCAG AA × Fail

Any Text WCAG AA × Fail

Large Text (above 18pt) WCAG AAA × Fail

Any Text WCAG AAA × Fail

Black Background



This preview shows how the XYZ color 46.9588, 46.1941, 54.5855 looks on a black background.

Color Contrast Check

Large Text (above 18pt) WCAG AA ✓ Pass

Any Text WCAG AA ✓ Pass

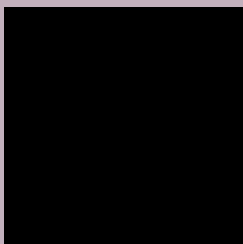
Large Text (above 18pt) WCAG AAA ✓ Pass

Any Text WCAG AAA ✓ Pass

If you want to check with other color combinations, try the [Color Contrast Checker](#).

XYZ 46.9588, 46.1941, 54.5855

Background



This preview shows how black text looks on a background with the XYZ color 46.9588, 46.1941, 54.5855.



This preview shows how white text looks on a background with the XYZ color 46.9588, 46.1941,

Color Blindness Simulation

Color vision deficiency is a very complex topic, and I could not describe the different causes any better than Wikipedia does, so if you want to learn more, you should check out their [article about color blindness](#).

Dichromacy



Original Color

46.9588, 46.1941, 54.5855

Protanopia

44.7813, 46.2279, 55.8529

Deuteranopia

47.2163, 46.3269, 54.5975



Tritanopia

47.0677, 46.2377, 55.1592

Trichromacy



Original Color

46.9588, 46.1941, 54.5855

Protanomaly

45.6641, 46.3970, 55.2640

Deuteranomaly

47.2163, 46.3269, 54.5975

Tritanomaly

47.0677, 46.2377, 55.1592

Monochromacy



Original Color

46.9588, 46.1941, 54.5855

Achromatopsia

45.0092, 47.3531, 51.5676

Achromatomaly

45.5717, 46.7101, 52.5130

CSS Examples

Text

The CSS property to change the color of the text to XYZ 46.9588, 46.1941, 54.5855 is called "color". The color property can be set on classes, ids or directly on the HTML element.

This example shows how text in the color `rgb(194, 176, 189)` looks like.

```
.text, #text, p{  
    color:rgb(194, 176, 189)  
}
```

If you want to add a text shadow in that color use the text-shadow property, you can generate a text shadow directly with our [CSS Text Shadow Generator](#).

Here you see how black text with a 4 pixel rgb(194, 176, 189) colored shadow looks like.

```
.shadow{ text-shadow: 4px 4px 2px rgb(194, 176, 189) }
```

Border

The CSS property to change the border of an element to XYZ 46.9588, 46.1941, 54.5855 is called "border". The border property can be set on classes, ids or directly on the HTML element.

This example shows the color as border, it can be applied via the CSS property "border" or "border-color".

```
.border, #border, table{ border:4px solid rgb(194, 176, 189) }
```


If only the border color should be changed use the property `border-color`.

```
.border{ border-color:rgb(194, 176, 189) }
```

If you want to add a box shadow in that color use:

Here you see how a box with a 4 pixel `rgb(194, 176, 189)` colored shadow looks like.

```
.boxshadow{ -moz-box-shadow:4px 4px 4px  
4px rgb(194, 176, 189); -webkit-box-  
shadow:4px 4px 4px 4px rgb(194, 176, 189);  
box-shadow:4px 4px 4px 4px rgb(194, 176,  
189) }
```

Background

The CSS property to change the background color of an element to XYZ 46.9588, 46.1941, 54.5855 is called "background". The background property can be set on classes, ids or directly on the HTML element.

```
.background, #background, body{  
background: rgb(194, 176, 189) }
```

If only the background color should be changed can be used:

```
.background{ background-color: rgb(194,  
176, 189) }
```

This example shows the color as background, it is applied via the CSS property "background".

To optimize and compress your CSS code, you can use our [online CSS compressor and optimizer](#) based on csstidy. If you want to create a linear or radial gradient as background or border, check our [CSS Gradient Generator](#).

Hey! You found this booklet interesting? Support Converting Colors with the new Membership Option!

The pro membership hides all ads, plus gives you double the colors in the color bucket, and more awesome pro features!

[Learn more, Memberships starting at \\$2.50/m!](#)

**Follow me
on Twitter!**

@ConvertingColor