

Converting Colors

XYZ(46.9692, 44.2472, 39.7703)

Have a look what the booklet for
XYZ(46.9692, 44.2472, 39.7703)
contains.

XYZ(47.0140, 44.2801, 39.7872)	3
<i>Conversions</i>	4
<i>Details</i>	6
<i>Harmonies</i>	12
<i>Previews</i>	24
<i>Color Blindness Simulation</i>	28
<i>CSS Examples</i>	31

Color

**XYZ(47.0140, 44.2801,
39.7872)**

Conversions

Conversions Part 1

Format	Color
Hex	D2A8A1
RGB	210, 168, 161
RGB Percent	82%, 66%, 63%
CMY	0.1765, 0.3412, 0.3686
CMYK	0.00, 0.20, 0.23, 0.18
HSL	9°, 35%, 73%
HSV	9°, 23%, 82%
XYZ	47.0140, 44.2801, 39.7872
YIQ	179.7600, 27.2790, 6.7270

Conversions

Conversions Part 2

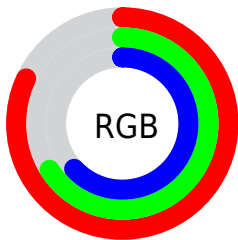
Format	Color
RYB	210, 169, 161
Decimal	13805729
CIELab	72.42, 14.33, 9.46
CIELCh	72, 17.165, 33.424
Yxy	44.2801, 0.3587, 0.3378
Android (android.graphics.Color)	4291995809 (0xFFD2A8A1)
YUV	179.7600, -9.2487, 26.5205
Hunter-Lab	66.5433, 9.6626, 11.1300

Details

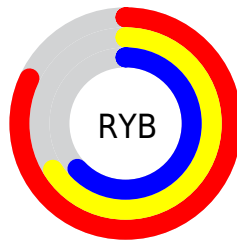
The XYZ color **47.0140, 44.2801, 39.7872** is a light color, and the websafe version is hex **CC9999**. A complement of this color would be **47.6862, 54.9406, 69.0643**, and the grayscale version is **43.2925, 45.5471, 49.6008**.

A 20% lighter version of the original color is **80.0223, 78.9932, 75.9953**, and **22.5774, 20.5851, 17.5352** is the 20% darker color. If you saturate the color by 10%, you get **42.2196, 37.4101, 29.8070**, and if you desaturate by 10%, it is **52.5817, 52.1984, 51.5606**.

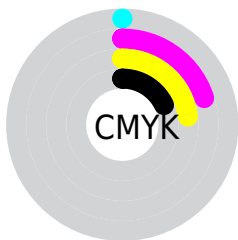
Distribution



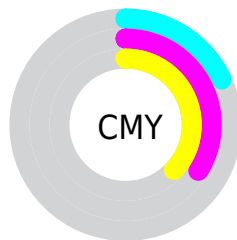
- Red (82%)
- Green (66%)
- Blue (63%)



- Red (82%)
- Yellow (66%)
- Blue (63%)



- Cyan (0%)
- Magenta (20%)
- Yellow (23%)
- Black (18%)





- Cyan (18%)
- Magenta (34%)
- Yellow (37%)

Brightness & Saturation Gradients


These gradients show how the XYZ color 47.0140, 44.2801, 39.7872 changes by changing the brightness by 10 percent. The first figure shows a shift by +10% for each color and the second figure -10%.


Similar to the brightness gradients but the following saturation gradients show a change of the XYZ color 47.0140, 44.2801, 39.7872 by changing the saturation by 10% instead.


 47.0140, 44.2801,
39.7872


 47.0140, 44.2801,
39.7872


365.5184,
363.8501, 360.7512

 33.2547, 30.8908,
27.0601


 84.9531, 81.6391,
76.0729

 22.4818, 20.5157,
17.3856


 109.8637,
106.3775, 100.4686

 14.3299, 12.7705,
10.3449


139.2221,
135.6677, 129.5910

 8.4337, 7.2707,
5.5197

173.3936,
169.8942, 163.8585

 4.4278, 3.6319,
2.4913

212.7436,
209.4413, 203.6898

 1.9469, 1.4699,
0.8355

257.6375,

 0.6039, 0.2674,

254.6933, 249.5033

0.0000

308.4407,
306.0348, 301.7176

0.0000, 0.0000,
0.0000

47.0140, 44.2801,
39.7872

47.0140, 44.2801,
39.7872

42.2196, 37.4101,
29.8070

52.5817, 52.1984,
51.5606

38.1607, 31.5385,
21.5294

58.9514, 61.2001,
65.2065

34.8016, 26.6205,
14.8596

66.1545, 71.3262,
80.8026

32.1020, 22.6055,
9.6927

74.2197, 82.6136,
98.4216

30.0177, 19.4380,
5.9113

80.3885, 92.4417,
108.2139

■ 28.4985, 17.0564,
3.3804

■ 27.4863, 15.3906,
1.9375

■ 27.0432, 14.6311,
1.3988

Harmonies

Analogous

The Analogous color harmony consists of three colors that are next to each other on the color wheel.



48.0227, 44.2801, 47.2474



47.0140, 44.2801, 39.7872



44.6828, 44.2801, 35.0651

Triad

The Triadic color harmony groups three colors that are evenly spaced from another and form a triangle on the color wheel.



47.0140, 44.2801, 39.7872



37.2030, 44.2801, 41.2878



42.4274, 44.2801, 66.3672

Complementary

The Complementary color scheme is a pair of colors which are on the opposite of each other on the color wheel.



47.0140, 44.2801, 39.7872



47.6862, 54.9406, 69.0643

Split Complementary

Split-complementary colors differ from the complementary color scheme. The scheme consists of three colors, the original color and two neighbors of the complement color.



39.5936, 44.2801, 64.2956



47.0140, 44.2801, 39.7872



36.6615, 44.2801, 49.1927

Square

The Square scheme is like the rectangle color scheme, but the four colors are evenly spaced on the color wheel.



47.0140, 44.2801, 39.7872



39.0315, 44.2801, 35.8576



37.5167, 44.2801, 57.7527



45.2978, 44.2801, 63.1245

Rectangle

The Rectangle color scheme consists of four colors that form a rectangle on the color wheel.



47.0140, 44.2801, 39.7872



42.7416, 44.2801, 33.7762



37.5167, 44.2801, 57.7527



41.4389, 44.2801, 66.2706

Sweetspot

The Sweet Spot groups the original color and five complimentary colors.



47.0152, 44.2821, 39.7881



87.6203, 89.5277, 92.8982



50.1588, 43.5260, 62.5500



18.6237, 18.9781, 19.6038



0.0000, 0.0000, 0.0000



20.3446, 21.4041, 23.3091

Same Dimension

The Same Dimension uses a secret algorithm to generate beautiful new colors.



47.0152, 44.2821, 39.7881



69.0985, 63.2012, 53.6850



51.8687, 53.9892, 41.4060



11.9431, 12.0770, 12.3137



16.5402, 9.0134, 0.8680



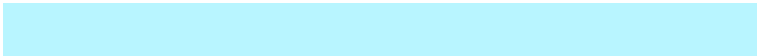
0.9698, 0.5939, 0.0635

Inverse Universe

The Inverse Universe completely reimagines the original color for something new.



47.6862, 54.9406, 69.0643



70.3116, 82.5413, 106.8340



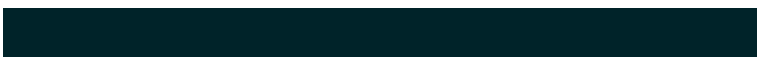
42.4447, 44.4576, 67.3172



12.0083, 13.1070, 15.1406



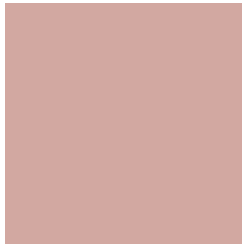
17.1060, 22.8586, 40.7031



0.9968, 1.3589, 2.2893

Previews

White Background



This preview shows how the XYZ color 47.0140, 44.2801, 39.7872 looks on a white background.

Color Contrast Check

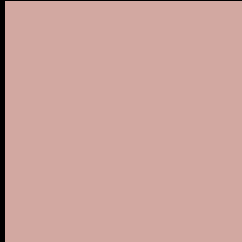
Large Text (above 18pt) WCAG AA × Fail

Any Text WCAG AA × Fail

Large Text (above 18pt) WCAG AAA × Fail

Any Text WCAG AAA × Fail

Black Background



This preview shows how the XYZ color 47.0140, 44.2801, 39.7872 looks on a black background.

Color Contrast Check

Large Text (above 18pt) WCAG AA ✓ Pass

Any Text WCAG AA ✓ Pass

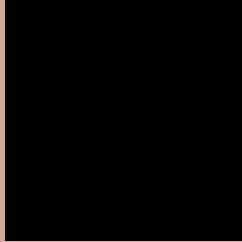
Large Text (above 18pt) WCAG AAA ✓ Pass

Any Text WCAG AAA ✓ Pass

If you want to check with other color combinations, try the [Color Contrast Checker](#).

XYZ 47.0140, 44.2801, 39.7872

Background



This preview shows how black text looks on a background with the XYZ color 47.0140, 44.2801, 39.7872.



This preview shows how white text looks on a background with the XYZ color 47.0140, 44.2801,

39.7872.

Color Blindness Simulation

Color vision deficiency is a very complex topic, and I could not describe the different causes any better than Wikipedia does, so if you want to learn more, you should check out their [article about color blindness](#).

Dichromacy



Original Color

47.0140, 44.2801, 39.7872

Protanopia

42.3722, 44.3878, 42.4108

Deuteranopia

44.9955, 44.0814, 39.3947



Tritanopia

48.6424, 44.1217, 48.0721

Trichromacy



Original Color

47.0140, 44.2801, 39.7872

Protanomaly

43.8292, 44.2899, 41.3607

Deuteranomaly

45.6217, 44.1249, 39.3701

Tritanomaly

47.9466, 44.0999, 45.0148

Monochromacy



Original Color

47.0140, 44.2801, 39.7872

Achromatopsia

43.3819, 45.6411, 49.7032

Achromatomaly

44.5540, 45.1442, 45.9006

CSS Examples

Text

The CSS property to change the color of the text to XYZ 47.0140, 44.2801, 39.7872 is called "color". The color property can be set on classes, ids or directly on the HTML element.

This example shows how text in the color rgb(210, 168, 161) looks like.

```
.text, #text, p{  
    color:rgb(210, 168, 161)  
}
```

If you want to add a text shadow in that color use the text-shadow property, you can generate a text shadow directly with our [CSS Text Shadow Generator](#).

Here you see how black text with a 4 pixel rgb(210, 168, 161) colored shadow looks like.

```
.shadow{ text-shadow: 4px 4px 2px rgb(210, 168, 161) }
```

Border

The CSS property to change the border of an element to XYZ 47.0140, 44.2801, 39.7872 is called "border". The border property can be set on classes, ids or directly on the HTML element.

This example shows the color as border, it can be applied via the CSS property "border" or "border-color".

```
.border, #border, table{ border:4px solid rgb(210, 168, 161) }
```


If only the border color should be changed use the property `border-color`.

```
.border{ border-color:rgb(210, 168, 161) }
```

If you want to add a box shadow in that color use:

Here you see how a box with a 4 pixel `rgb(210, 168, 161)` colored shadow looks like.

```
.boxshadow{ -moz-box-shadow:4px 4px 4px  
4px rgb(210, 168, 161); -webkit-box-  
shadow:4px 4px 4px 4px rgb(210, 168, 161);  
box-shadow:4px 4px 4px 4px rgb(210, 168,  
161) }
```

Background

The CSS property to change the background color of an element to XYZ 47.0140, 44.2801, 39.7872 is called "background". The background property can be set on classes, ids or directly on the HTML element.

```
.background, #background, body{  
background: rgb(210, 168, 161) }
```

If only the background color should be changed can be used:

```
.background{ background-color: rgb(210,  
168, 161) }
```

This example shows the color as background, it is applied via the CSS property "background".

To optimize and compress your CSS code, you can use our [online CSS compressor and optimizer](#) based on csstidy. If you want to create a linear or radial gradient as background or border, check our [CSS Gradient Generator](#).

Hey! You found this booklet interesting? Support Converting Colors with the new Membership Option!

The pro membership hides all ads, plus gives you double the colors in the color bucket, and more awesome pro features!

[Learn more, Memberships starting at \\$2.50/m!](#)

**Follow me
on Twitter!**

@ConvertingColor