

Converting Colors

XYZ(47.0087, 46.4994, 55.2129)

Have a look what the booklet for
XYZ(47.0087, 46.4994, 55.2129)
contains.

XYZ(47.0087, 46.4994, 55.2129)	3
<i>Conversions</i>	4
<i>Details</i>	6
<i>Harmonies</i>	12
<i>Previews</i>	24
<i>Color Blindness Simulation</i>	28
<i>CSS Examples</i>	31

Color

**XYZ(47.0087, 46.4994,
55.2129)**

Conversions

Conversions Part 1

Format	Color
Hex	C1B1BE
RGB	193, 177, 190
RGB Percent	76%, 69%, 75%
CMY	0.2431, 0.3059, 0.2549
CMYK	0.00, 0.08, 0.02, 0.24
HSL	311°, 11%, 73%
HSV	311°, 8%, 76%
XYZ	47.0087, 46.4994, 55.2129
YIQ	183.2660, 5.3630, 7.4350

Conversions

Conversions Part 2

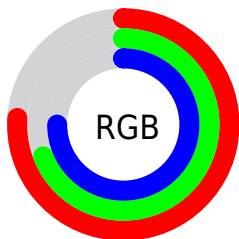
Format	Color
R_{YB}	193, 177, 190
Decimal	12693950
CIE _{Lab}	73.87, 8.05, -4.54
CIE _{LCh}	74, 9.241, 330.568
Yxy	46.4994, 0.3161, 0.3127
Android (android.graphics.Color)	4290884030 (0xFFC1B1BE)
YUV	183.2660, 3.3199, 8.5367
Hunter-Lab	68.1905, 3.7198, -0.2730

Details

The XYZ color **47.0087, 46.4994, 55.2129** is a light color, and the websafe version is hex **CCCCCC**. A complement of this color would be **45.4414, 50.7835, 50.5895**, and the grayscale version is **45.1371, 47.4877, 51.7141**.

A 20% lighter version of the original color is **84.8404, 85.0714, 99.1376**, and **22.3705, 21.7104, 26.6784** is the 20% darker color. If you saturate the color by 10%, you get **43.0727, 39.2520, 51.9737**, and if you desaturate by 10%, it is **51.4964, 54.8330, 58.6855**.

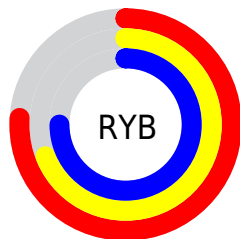
Distribution



Red (76%)

Green (69%)

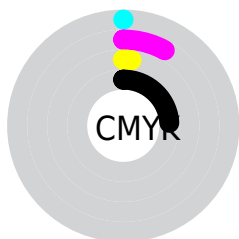
Blue (75%)



Red (76%)

Yellow (69%)

Blue (75%)

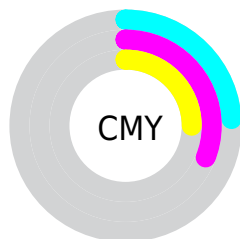


Cyan (0%)

Magenta (8%)

Yellow (2%)

Black (24%)



Cyan (24%)

Magenta (31%)

Yellow (25%)

Brightness & Saturation Gradients

These gradients show how the XYZ color 47.0087, 46.4994, 55.2129 changes by changing the brightness by 10 percent. The first figure shows a shift by +10% for each color and the second figure -10%.

Similar to the brightness gradients but the following saturation gradients show a change of the XYZ color 47.0087, 46.4994, 55.2129 by changing the saturation by 10% instead.

■ 47.0087, 46.4994,
55.2129

■ 47.0087, 46.4994,
55.2129

365.4976,
372.8128, 424.0231

■ 33.2505, 32.6401,
39.1725

■ 84.9453, 84.9659,
99.3271

■ 22.4786, 21.8509,
26.5850

109.8544,
110.3419, 128.2379

■ 14.3275, 13.7474,
17.0321

139.2111,
140.3255, 162.2760

■ 8.4320, 7.9452,
10.0952

173.3809,
175.3013, 201.8597

■ 4.4267, 4.0599,
5.3557

212.7291,
215.6535, 247.4078

■ 1.9463, 1.7071,
2.3951

257.6211,

■ 0.6035, 0.4283,

261.7665, 299.3387

0.7838

308.4221,
314.0248, 358.0710

■ 0.0000, 0.0000,
0.0000

■ 47.0087, 46.4994,
55.2129

■ 47.0087, 46.4994,
55.2129

■ 43.0727, 39.2520,
51.9737

■ 51.4964, 54.8330,
58.6855

■ 39.6617, 33.0398,
48.9572

■ 56.5529, 64.2893,
62.3961

■ 36.7530, 27.8165,
46.1558

■ 62.1998, 74.9102,
66.3525

■ 34.3204, 23.5302,
43.5606

■ 68.4561, 86.7340,
70.5616

■ 32.3355, 20.1239,
41.1616

■ 69.1499, 87.4165,
72.9664

■ 30.7667, 17.5347,
38.9481

■ 69.6007, 87.5968,
75.3403

■ 29.5783, 15.6912,
36.9077

■ 70.0617, 87.7812,
77.7681

■ 28.7283, 14.5096,
35.0261

■ 70.5331, 87.9698,
80.2501

■ 28.1508, 13.8582,
33.2809

■ 71.0148, 88.1625,
82.7867

Harmonies

Analogous

The Analogous color harmony consists of three colors that are next to each other on the color wheel.



45.8245, 46.4994, 58.8369



47.0087, 46.4994, 55.2129



47.4352, 46.4994, 50.5401

Triad

The Triadic color harmony groups three colors that are evenly spaced from another and form a triangle on the color wheel.



47.0087, 46.4994, 55.2129



44.1649, 46.4994, 42.1013



41.5284, 46.4994, 55.3780

Complementary

The Complementary color scheme is a pair of colors which are on the opposite of each other on the color wheel.



47.0087, 46.4994, 55.2129



45.4414, 50.7835, 50.5895

Split Complementary

Split-complementary colors differ from the complementary color scheme. The scheme consists of three colors, the original color and two neighbors of the complement color.



41.1083, 46.4994, 50.7199



47.0087, 46.4994, 55.2129



42.6071, 46.4994, 43.2240

Square

The Square scheme is like the rectangle color scheme, but the four colors are evenly spaced on the color wheel.



47.0087, 46.4994, 55.2129



45.7688, 46.4994, 43.1432



41.4983, 46.4994, 46.3079



42.6602, 46.4994, 58.9363

Rectangle

The Rectangle color scheme consists of four colors that form a rectangle on the color wheel.



47.0087, 46.4994, 55.2129



47.2243, 46.4994, 47.5137



41.4983, 46.4994, 46.3079



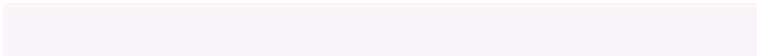
41.3006, 46.4994, 53.8796

Sweetspot

The Sweet Spot groups the original color and five complimentary colors.



47.0100, 46.5014, 55.2139



89.1043, 92.3883, 102.7285



44.1566, 44.9921, 56.8098



19.1338, 19.8537, 22.0525



92.9021, 97.7402, 106.4391



19.4759, 20.4902, 22.3138

Same Dimension

The Same Dimension uses a secret algorithm to generate beautiful new colors.



47.0100, 46.5014, 55.2139



82.8035, 80.7129, 97.7722



46.1664, 46.1640, 50.7713



10.4137, 10.2141, 12.2689



18.6920, 9.1665, 22.0878



0.8291, 0.4046, 1.0673

Inverse Universe

The Inverse Universe completely reimagines the original color for something new.



47.0100, 46.5014, 55.2139



82.8035, 80.7129, 97.7722



46.2729, 51.1161, 54.9681



10.4137, 10.2141, 12.2689



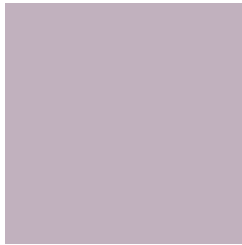
18.6920, 9.1665, 22.0878



0.8291, 0.4046, 1.0673

Previews

White Background



This preview shows how the XYZ color 47.0087, 46.4994, 55.2129 looks on a white background.

Color Contrast Check

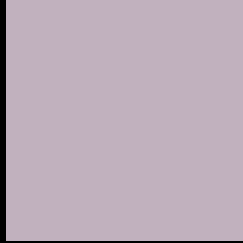
Large Text (above 18pt) WCAG AA × Fail

Any Text WCAG AA × Fail

Large Text (above 18pt) WCAG AAA × Fail

Any Text WCAG AAA × Fail

Black Background



This preview shows how the XYZ color 47.0087, 46.4994, 55.2129 looks on a black background.

Color Contrast Check

Large Text (above 18pt) WCAG AA ✓ Pass

Any Text WCAG AA ✓ Pass

Large Text (above 18pt) WCAG AAA ✓ Pass

Any Text WCAG AAA ✓ Pass

If you want to check with other color combinations, try the [Color Contrast Checker](#).

XYZ 47.0087, 46.4994, 55.2129

Background



This preview shows how black text looks on a background with the XYZ color 47.0087, 46.4994, 55.2129.



This preview shows how white text looks on a background with the XYZ color 47.0087, 46.4994,

Color Blindness Simulation

Color vision deficiency is a very complex topic, and I could not describe the different causes any better than Wikipedia does, so if you want to learn more, you should check out their [article about color blindness](#).

Dichromacy



Original Color

47.0087, 46.4994, 55.2129

Protanopia

45.3297, 46.7986, 56.5131

Deuteranopia

47.3253, 46.3705, 55.1713



Tritanopia

47.1184, 46.5433, 55.7906

Trichromacy



Original Color

47.0087, 46.4994, 55.2129

Protanomaly

45.9749, 46.8432, 55.9087

Deuteranomaly

47.0677, 46.2377, 55.1592

Tritanomaly

47.1184, 46.5433, 55.7906

Monochromacy



Original Color

47.0087, 46.4994, 55.2129

Achromatopsia

45.0092, 47.3531, 51.5676

Achromatomaly

45.8803, 47.1577, 53.1386

CSS Examples

Text

The CSS property to change the color of the text to XYZ 47.0087, 46.4994, 55.2129 is called "color". The color property can be set on classes, ids or directly on the HTML element.

This example shows how text in the color `rgb(193, 177, 190)` looks like.

```
.text, #text, p{  
    color:rgb(193, 177, 190)  
}
```

If you want to add a text shadow in that color use the text-shadow property, you can generate a text shadow directly with our [CSS Text Shadow Generator](#).

Here you see how black text with a 4 pixel rgb(193, 177, 190) colored shadow looks like.

```
.shadow{ text-shadow: 4px 4px 2px rgb(193, 177, 190) }
```

Border

The CSS property to change the border of an element to XYZ 47.0087, 46.4994, 55.2129 is called "border". The border property can be set on classes, ids or directly on the HTML element.

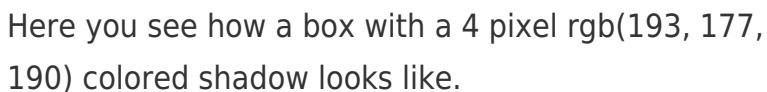
This example shows the color as border, it can be applied via the CSS property "border" or "border-color".

```
.border, #border, table{ border:4px solid rgb(193, 177, 190) }
```


If only the border color should be changed use the property `border-color`.

```
.border{ border-color:rgb(193, 177, 190) }
```

If you want to add a box shadow in that color use:



Here you see how a box with a 4 pixel `rgb(193, 177, 190)` colored shadow looks like.

```
.boxshadow{ -moz-box-shadow:4px 4px 4px 4px rgb(193, 177, 190); -webkit-box-shadow:4px 4px 4px 4px rgb(193, 177, 190); box-shadow:4px 4px 4px 4px rgb(193, 177, 190) }
```

Background

The CSS property to change the background color of an element to XYZ 47.0087, 46.4994, 55.2129 is called "background". The background property can be set on classes, ids or directly on the HTML element.

```
.background, #background, body{  
background: rgb(193, 177, 190) }
```

If only the background color should be changed can be used:

```
.background{ background-color: rgb(193,  
177, 190) }
```

This example shows the color as background, it is applied via the CSS property "background".

To optimize and compress your CSS code, you can use our [online CSS compressor and optimizer](#) based on csstidy. If you want to create a linear or radial gradient as background or border, check our [CSS Gradient Generator](#).

Hey! You found this booklet interesting? Support Converting Colors with the new Membership Option!

The pro membership hides all ads, plus gives you double the colors in the color bucket, and more awesome pro features!

[Learn more, Memberships starting at \\$2.50/m!](#)

**Follow me
on Twitter!**

@ConvertingColor