

Converting Colors

XYZ(47.0411, 38.4970, 40.5486)

Have a look what the booklet for
XYZ(47.0411, 38.4970, 40.5486)
contains.

XYZ(47.0411, 38.4970, 40.5486)	3
<i>Conversions</i>	4
<i>Details</i>	6
<i>Harmonies</i>	12
<i>Previews</i>	24
<i>Color Blindness Simulation</i>	28
<i>CSS Examples</i>	31

Color

**XYZ(47.0411, 38.4970,
40.5486)**

Conversions

Conversions Part 1

Format	Color
Hex	DE91A5
RGB	222, 145, 165
RGB Percent	87%, 57%, 65%
CMY	0.1294, 0.4314, 0.3529
CMYK	0.00, 0.35, 0.26, 0.13
HSL	344°, 54%, 72%
HSV	344°, 35%, 87%
XYZ	47.0411, 38.4970, 40.5486
YIQ	170.3030, 39.4720, 22.5440

Conversions

Conversions Part 2

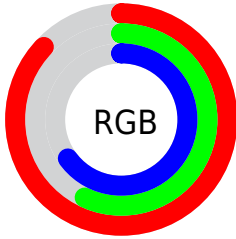
Format	Color
R _Y B	222, 145, 165
Decimal	14586277
CIE Lab	68.39, 31.77, 1.60
CIE LCh	68, 31.813, 2.884
Yxy	38.4970, 0.3731, 0.3053
Android (android.graphics.Color)	4292776357 (0xFFDE91A5)
YUV	170.3030, -2.6144, 45.3383
Hunter-Lab	62.0460, 26.7521, 4.6846

Details

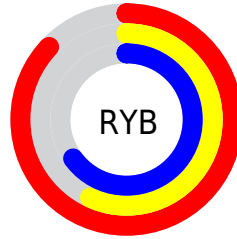
The XYZ color **47.0411, 38.4970, 40.5486** is a light color, and the websafe version is hex **CC9999**. A complement of this color would be **48.4607, 62.5275, 65.3951**, and the grayscale version is **38.3594, 40.3571, 43.9489**.

A 20% lighter version of the original color is **74.8125, 67.7359, 76.8414**, and **22.4120, 17.0203, 17.7268** is the 20% darker color. If you saturate the color by 10%, you get **42.5734, 31.8035, 32.1473**, and if you desaturate by 10%, it is **52.3660, 46.5966, 50.1849**.

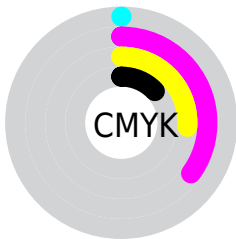
Distribution



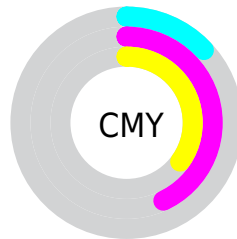
- Red (87%)
- Green (57%)
- Blue (65%)



- Red (87%)
- Yellow (57%)
- Blue (65%)



- Cyan (0%)
- Magenta (35%)
- Yellow (26%)
- Black (13%)



- Cyan (13%)
- Magenta (43%)
- Yellow (35%)

Brightness & Saturation Gradients

These gradients show how the XYZ color 47.0411, 38.4970, 40.5486 changes by changing the brightness by 10 percent. The first figure shows a shift by +10% for each color and the second figure -10%.

Similar to the brightness gradients but the following saturation gradients show a change of the XYZ color 47.0411, 38.4970, 40.5486 by changing the saturation by 10% instead.

47.0411, 38.4970,
40.5486

47.0411, 38.4970,
40.5486

365.6247,
339.7472, 364.0511

33.2762, 26.3687,
27.6495

84.9933, 72.8693,
77.2444

22.4984, 17.0996,
17.8249

109.9114, 95.8820,
101.8782

14.3422, 10.3056,
10.6562

139.2779,
123.2916, 131.2606

8.4424, 5.6020,
5.7249

173.4583,
155.4825, 165.8101

4.4335, 2.6046,
2.6125

212.8178,
192.8392, 205.9454

1.9502, 0.9290,
0.8989

257.7218,

0.6057, 0.0000,

235.7459, 252.0850

0.0000

308.5356,
284.5871, 304.6474

0.0000, 0.0000,
0.0000

47.0411, 38.4970,
40.5486

47.0411, 38.4970,
40.5486

42.5734, 31.8035,
32.1473

52.3660, 46.5966,
50.1849

38.9136, 26.4301,
24.9275

58.5874, 56.1709,
61.1019

36.0123, 22.2901,
18.8350

65.7460, 67.2904,
73.3460

33.8131, 19.2838,
13.8101

73.8789, 80.0196,
86.9604

32.2511, 17.2959,
9.7873

82.6998, 93.7758,
101.8789

■ 31.2484, 16.1859,
6.6923

■ 83.9343, 94.2696,
108.3798

■ 30.8792, 15.8316,
5.3851

Harmonies

Analogous

The Analogous color harmony consists of three colors that are next to each other on the color wheel.



45.8185, 38.4970, 55.7402



47.0411, 38.4970, 40.5486



45.2596, 38.4970, 28.6901

Triad

The Triadic color harmony groups three colors that are evenly spaced from another and form a triangle on the color wheel.



47.0411, 38.4970, 40.5486



31.6212, 38.4970, 22.8063



32.3862, 38.4970, 71.4632

Complementary

The Complementary color scheme is a pair of colors which are on the opposite of each other on the color wheel.



47.0411, 38.4970, 40.5486



48.4607, 62.5275, 65.3951

Split Complementary

Split-complementary colors differ from the complementary color scheme. The scheme consists of three colors, the original color and two neighbors of the complement color.



29.1053, 38.4970, 58.6879



47.0411, 38.4970, 40.5486



28.6926, 38.4970, 30.5913

Square

The Square scheme is like the rectangle color scheme, but the four colors are evenly spaced on the color wheel.



47.0411, 38.4970, 40.5486



36.1094, 38.4970, 20.0156



27.8146, 38.4970, 43.3152



37.0754, 38.4970, 75.8122

Rectangle

The Rectangle color scheme consists of four colors that form a rectangle on the color wheel.



47.0411, 38.4970, 40.5486



42.6950, 38.4970, 23.5915



27.8146, 38.4970, 43.3152



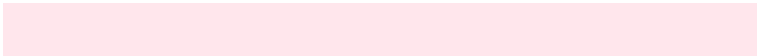
31.0970, 38.4970, 67.8880

Sweetspot

The Sweet Spot groups the original color and five complimentary colors.



47.0422, 38.4988, 40.5494



84.5560, 83.6390, 91.1374



47.5246, 38.0090, 73.9391



17.8058, 17.4480, 19.0053



0.0000, 0.0000, 0.0000



20.3446, 21.4041, 23.3091

Same Dimension

The Same Dimension uses a secret algorithm to generate beautiful new colors.



47.0422, 38.4988, 40.5494



59.6224, 45.5317, 46.5719



48.3276, 43.7583, 32.6894



13.8526, 13.7587, 14.9940



18.3803, 9.4191, 3.4025



1.3102, 0.6674, 0.4266

Inverse Universe

The Inverse Universe completely reimagines the original color for something new.



47.0422, 38.4988, 40.5494



59.6224, 45.5317, 46.5719



46.4641, 54.4965, 77.1774



13.8526, 13.7587, 14.9940



18.3803, 9.4191, 3.4025



1.3102, 0.6674, 0.4266

Previews

White Background



This preview shows how the XYZ color 47.0411, 38.4970, 40.5486 looks on a white background.

Color Contrast Check

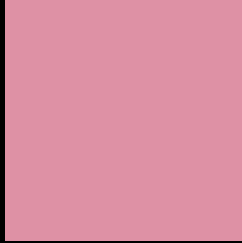
Large Text (above 18pt) WCAG AA × Fail

Any Text WCAG AA × Fail

Large Text (above 18pt) WCAG AAA × Fail

Any Text WCAG AAA × Fail

Black Background



This preview shows how the XYZ color 47.0411, 38.4970, 40.5486 looks on a black background.

Color Contrast Check

Large Text (above 18pt) WCAG AA ✓ Pass

Any Text WCAG AA ✓ Pass

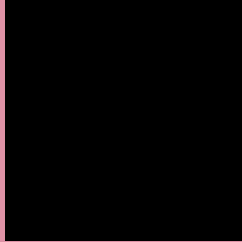
Large Text (above 18pt) WCAG AAA ✓ Pass

Any Text WCAG AAA ✓ Pass

If you want to check with other color combinations, try the [Color Contrast Checker](#).

XYZ 47.0411, 38.4970, 40.5486

Background



This preview shows how black text looks on a background with the XYZ color 47.0411, 38.4970, 40.5486.



This preview shows how white text looks on a background with the XYZ color 47.0411, 38.4970,

Color Blindness Simulation

Color vision deficiency is a very complex topic, and I could not describe the different causes any better than Wikipedia does, so if you want to learn more, you should check out their [article about color blindness](#).

Dichromacy



Original Color

47.0411, 38.4970, 40.5486

Protanopia

37.5084, 38.6623, 47.0806

Deuteranopia

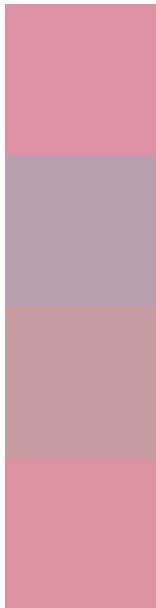
39.4495, 38.7636, 39.5853



Tritanopia

46.1835, 38.3642, 36.8692

Trichromacy



Original Color

47.0411, 38.4970, 40.5486

Protanomaly

40.2632, 38.0356, 44.7547

Deuteranomaly

41.7880, 38.4270, 39.8650

Tritanomaly

46.4428, 38.4680, 38.2350

Monochromacy



Original Color

47.0411, 38.4970, 40.5486

Achromatopsia

38.2080, 40.1978, 43.7754

Achromatomaly

40.7990, 39.1357, 42.4494

CSS Examples

Text

The CSS property to change the color of the text to XYZ 47.0411, 38.4970, 40.5486 is called "color". The color property can be set on classes, ids or directly on the HTML element.

This example shows how text in the color `rgb(222, 145, 165)` looks like.

```
.text, #text, p{  
    color:rgb(222, 145, 165)  
}
```

If you want to add a text shadow in that color use the text-shadow property, you can generate a text shadow directly with our [CSS Text Shadow Generator](#).

Here you see how black text with a 4 pixel rgb(222, 145, 165) colored shadow looks like.

```
.shadow{ text-shadow: 4px 4px 2px rgb(222, 145, 165) }
```

Border

The CSS property to change the border of an element to XYZ 47.0411, 38.4970, 40.5486 is called "border". The border property can be set on classes, ids or directly on the HTML element.

This example shows the color as border, it can be applied via the CSS property "border" or "border-color".

```
.border, #border, table{ border:4px solid rgb(222, 145, 165) }
```


If only the border color should be changed use the property `border-color`.

```
.border{ border-color:rgb(222, 145, 165) }
```

If you want to add a box shadow in that color use:

Here you see how a box with a 4 pixel `rgb(222, 145, 165)` colored shadow looks like.

```
.boxshadow{ -moz-box-shadow:4px 4px 4px 4px rgb(222, 145, 165); -webkit-box-shadow:4px 4px 4px 4px rgb(222, 145, 165); box-shadow:4px 4px 4px 4px rgb(222, 145, 165) }
```

Background

The CSS property to change the background color of an element to XYZ 47.0411, 38.4970, 40.5486 is called "background". The background property can be set on classes, ids or directly on the HTML element.

```
.background, #background, body{  
background: rgb(222, 145, 165) }
```

If only the background color should be changed can be used:

```
.background{ background-color: rgb(222,  
145, 165) }
```

This example shows the color as background, it is applied via the CSS property "background".

To optimize and compress your CSS code, you can use our [online CSS compressor and optimizer](#) based on csstidy. If you want to create a linear or radial gradient as background or border, check our [CSS Gradient Generator](#).

Hey! You found this booklet interesting? Support Converting Colors with the new Membership Option!

The pro membership hides all ads, plus gives you double the colors in the color bucket, and more awesome pro features!

[Learn more, Memberships starting at \\$2.50/m!](#)

**Follow me
on Twitter!**

@ConvertingColor