

# Converting Colors

XYZ(47.0937, 43.9200, 45.5305)

Have a look what the booklet for  
XYZ(47.0937, 43.9200, 45.5305)  
contains.

<b>XYZ(47.0937, 43.9200, 45.5305)</b> .....	3
<b><i>Conversions</i></b> .....	4
<b><i>Details</i></b> .....	6
<b><i>Harmonies</i></b> .....	12
<b><i>Previews</i></b> .....	24
<b><i>Color Blindness Simulation</i></b> .....	28
<b><i>CSS Examples</i></b> .....	31

# Color

**XYZ(47.0937, 43.9200,  
45.5305)**

# Conversions

## Conversions Part 1

<b>Format</b>	<b>Color</b>
Hex	CFA7AD
RGB	207, 167, 173
RGB Percent	81%, 65%, 68%
CMY	0.1882, 0.3451, 0.3216
CMYK	0.00, 0.19, 0.16, 0.19
HSL	351°, 29%, 73%
HSV	351°, 19%, 81%
XYZ	47.0937, 43.9200, 45.5305
YIQ	179.6440, 21.9140, 10.3460

# Conversions

## Conversions Part 2

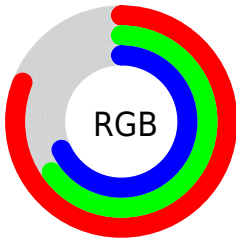
Format	Color
R <sub>Y</sub> B	207, 167, 173
Decimal	13608877
CIE Lab	72.17, 15.59, 2.47
CIE LCh	72, 15.780, 8.996
Yxy	43.9200, 0.3449, 0.3217
Android (android.graphics.Color)	4291798957 (0xFFCFA7AD)
YUV	179.6440, -3.2755, 23.9912
Hunter-Lab	66.2722, 10.8677, 5.6569

# Details

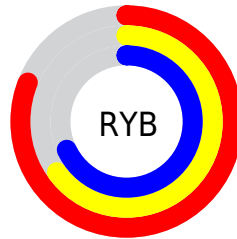
The XYZ color **47.0937, 43.9200, 45.5305** is a light color, and the websafe version is hex **CC9999**. A complement of this color would be **48.7936, 57.0593, 63.7030**, and the grayscale version is **43.2014, 45.4513, 49.4964**.

A 20% lighter version of the original color is **81.3649, 79.1040, 84.3790**, and **22.5308, 20.3173, 20.8233** is the 20% darker color. If you saturate the color by 10%, you get **42.0087, 36.2976, 35.9808**, and if you desaturate by 10%, it is **53.0124, 52.8500, 56.4656**.

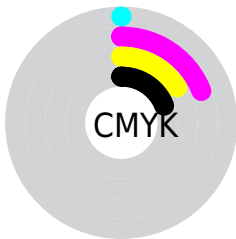
# Distribution



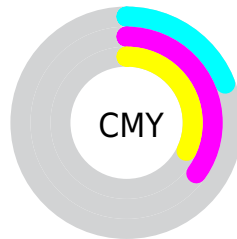
- Red (81%)
- Green (65%)
- Blue (68%)



- Red (81%)
- Yellow (65%)
- Blue (68%)



- Cyan (0%)
- Magenta (19%)
- Yellow (16%)
- Black (19%)




- Cyan (19%)
- Magenta (35%)
- Yellow (32%)


# Brightness & Saturation Gradients

These gradients show how the XYZ color 47.0937, 43.9200, 45.5305 changes by changing the brightness by 10 percent. The first figure shows a shift by +10% for each color and the second figure -10%.

Similar to the brightness gradients but the following saturation gradients show a change of the XYZ color 47.0937, 43.9200, 45.5305 by changing the saturation by 10% instead.





 47.0937, 43.9200,  
45.5305


 47.0937, 43.9200,  
45.5305


365.8311,  
362.3817, 385.1405

 33.3180, 30.6076,  
31.5295


 85.0714, 81.0973,  
84.8428

 22.5306, 20.3002,  
20.7405


 110.0040,  
105.7311, 110.9911

 14.3660, 12.6135,  
12.7451

139.3864,  
134.9075, 142.0257

 8.4591, 7.1629,  
7.1246

173.5838,  
169.0108, 178.3650

 4.4444, 3.5642,  
3.4605

212.9616,  
208.4255, 220.4276

 1.9565, 1.4329,  
1.3343

257.8852,

 0.6093, 0.2408,

253.5359, 268.6320

0.0897

308.7199,  
304.7265, 323.3968

■ 0.0000, 0.0000,  
0.0000

■ 47.0937, 43.9200,  
45.5305

■ 47.0937, 43.9200,  
45.5305

■ 42.0087, 36.2976,  
35.9808

■ 53.0124, 52.8500,  
56.4656

■ 37.7163, 29.9158,  
27.7583

■ 59.7963, 63.1388,  
68.8356

■ 34.1772, 24.7105,  
20.8048

■ 67.4796, 74.8420,  
82.6909

■ 31.3474, 20.6095,  
15.0566

■ 76.0938, 88.0104,  
98.0788

■ 29.1783, 17.5328,  
10.4443

■ 79.5423, 92.0055,  
108.1743

■ 27.6149, 15.3894,  
6.8916

■ 26.5932, 14.0721,  
4.3123

■ 26.0114, 13.4015,  
2.5986

■ 25.9801, 13.3646,  
2.5090

# Harmonies

## Analogous

The Analogous color harmony consists of three colors that are next to each other on the color wheel.



46.7893, 43.9200, 53.3599



47.0937, 43.9200, 45.5305



45.9175, 43.9200, 39.0496

# Triad

The Triadic color harmony groups three colors that are evenly spaced from another and form a triangle on the color wheel.



47.0937, 43.9200, 45.5305



38.5575, 43.9200, 37.1567



39.9086, 43.9200, 63.1137

# Complementary

The Complementary color scheme is a pair of colors which are on the opposite of each other on the color wheel.



47.0937, 43.9200, 45.5305



48.7936, 57.0593, 63.7030

# Split Complementary

Split-complementary colors differ from the complementary color scheme. The scheme consists of three colors, the original color and two neighbors of the complement color.



37.8326, 43.9200, 57.8173



47.0937, 43.9200, 45.5305



37.0763, 43.9200, 42.6801

# Square

The Square scheme is like the rectangle color scheme, but the four colors are evenly spaced on the color wheel.



47.0937, 43.9200, 45.5305



40.9369, 43.9200, 34.5698



36.8168, 43.9200, 50.1879



42.5630, 43.9200, 64.0887



# Rectangle

The Rectangle color scheme consists of four colors that form a rectangle on the color wheel.



47.0937, 43.9200, 45.5305



44.4806, 43.9200, 36.1596



36.8168, 43.9200, 50.1879



39.1233, 43.9200, 61.7543

# Sweetspot

The Sweet Spot groups the original color and five complimentary colors.



47.0949, 43.9220, 45.5314



88.3379, 89.8141, 96.6794



49.1700, 44.5620, 65.0417



18.7583, 18.9972, 20.4198



0.0000, 0.0000, 0.0000



20.3446, 21.4041, 23.3091



# Same Dimension

The Same Dimension uses a secret algorithm to generate beautiful new colors.



47.0949, 43.9220, 45.5314



72.0957, 65.3126, 66.6548



49.2324, 49.1049, 43.4451



11.8799, 11.8367, 12.6436



16.3904, 8.4290, 1.6959



0.9400, 0.4807, 0.2189



# Inverse Universe

The Inverse Universe completely reimagines the original color for something new.



47.0949, 43.9220, 45.5314



72.0957, 65.3126, 66.6548



46.2705, 50.8620, 66.4106



11.8799, 11.8367, 12.6436



16.3904, 8.4290, 1.6959

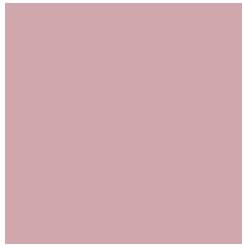


0.9400, 0.4807, 0.2189



# Previews

## White Background



This preview shows how the XYZ color 47.0937, 43.9200, 45.5305 looks on a white background.

## Color Contrast Check

Large Text (above 18pt) WCAG AA × Fail

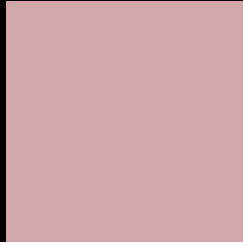
Any Text WCAG AA × Fail

Large Text (above 18pt) WCAG AAA × Fail

Any Text WCAG AAA × Fail



# Black Background



This preview shows how the XYZ color 47.0937, 43.9200, 45.5305 looks on a black background.

## Color Contrast Check

Large Text (above 18pt) WCAG AA ✓ Pass

Any Text WCAG AA ✓ Pass

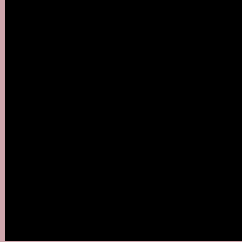
Large Text (above 18pt) WCAG AAA ✓ Pass

Any Text WCAG AAA ✓ Pass

If you want to check with other color combinations, try the [Color Contrast Checker](#).

**XYZ 47.0937, 43.9200, 45.5305**

## **Background**



This preview shows how black text looks on a background with the XYZ color 47.0937, 43.9200, 45.5305.



This preview shows how white text looks on a background with the XYZ color 47.0937, 43.9200,

45.5305.

# Color Blindness Simulation

Color vision deficiency is a very complex topic, and I could not describe the different causes any better than Wikipedia does, so if you want to learn more, you should check out their [article about color blindness](#).

## Dichromacy



### Original Color

47.0937, 43.9200, 45.5305

### Protanopia

42.3836, 43.9683, 48.3724

### Deuteranopia

44.7743, 43.8401, 45.1319



## Tritanopia

47.7853, 43.9370, 48.6100

# Trichromacy



## Original Color

47.0937, 43.9200, 45.5305

## Protanomaly

44.0152, 43.9689, 47.2413

## Deuteranomaly

45.6405, 44.0074, 45.1185

## Tritanomaly

47.5845, 43.8567, 47.5522

# Monochromacy



## Original Color

47.0937, 43.9200, 45.5305

## Achromatopsia

43.3819, 45.6411, 49.7032

## Achromatomaly

44.5010, 44.7814, 47.8932

# CSS Examples

## Text

The CSS property to change the color of the text to XYZ 47.0937, 43.9200, 45.5305 is called "color". The color property can be set on classes, ids or directly on the HTML element.

This example shows how text in the color `rgb(207, 167, 173)` looks like.

```
.text, #text, p{  
    color:rgb(207, 167, 173)  
}
```

If you want to add a text shadow in that color use the text-shadow property, you can generate a text shadow directly with our [CSS Text Shadow Generator](#).

Here you see how black text with a 4 pixel rgb(207, 167, 173) colored shadow looks like.

```
.shadow{ text-shadow: 4px 4px 2px rgb(207, 167, 173) }
```

## Border

The CSS property to change the border of an element to XYZ 47.0937, 43.9200, 45.5305 is called "border". The border property can be set on classes, ids or directly on the HTML element.

This example shows the color as border, it can be applied via the CSS property "border" or "border-color".

```
.border, #border, table{ border:4px solid rgb(207, 167, 173) }
```



If only the border color should be changed use the property `border-color`.

```
.border{ border-color:rgb(207, 167, 173) }
```

If you want to add a box shadow in that color use:

Here you see how a box with a 4 pixel `rgb(207, 167, 173)` colored shadow looks like.

```
.boxshadow{ -moz-box-shadow:4px 4px 4px  
4px rgb(207, 167, 173); -webkit-box-  
shadow:4px 4px 4px 4px rgb(207, 167, 173);  
box-shadow:4px 4px 4px 4px rgb(207, 167,  
173) }
```

# Background

The CSS property to change the background color of an element to XYZ 47.0937, 43.9200, 45.5305 is called "background". The background property can be set on classes, ids or directly on the HTML element.

```
.background, #background, body{  
background: rgb(207, 167, 173) }
```

If only the background color should be changed can be used:

```
.background{ background-color: rgb(207,  
167, 173) }
```

This example shows the color as background, it is applied via the CSS property "background".

To optimize and compress your CSS code, you can use our [online CSS compressor and optimizer](#) based on csstidy. If you want to create a linear or radial gradient as background or border, check our [CSS Gradient Generator](#).

Hey! You found this booklet interesting? Support Converting Colors with the new Membership Option!

The pro membership hides all ads, plus gives you double the colors in the color bucket, and more awesome pro features!

**[Learn more, Memberships starting at \\$2.50/m!](#)**

**Follow me  
on Twitter!**

@ConvertingColor