

Converting Colors

XYZ(47.1204, 27.8427, 19.8548)

Have a look what the booklet for
XYZ(47.1204, 27.8427, 19.8548)
contains.

XYZ(47.1048, 27.8521, 19.7229)	3
<i>Conversions</i>	4
<i>Details</i>	6
<i>Harmonies</i>	12
<i>Previews</i>	24
<i>Color Blindness Simulation</i>	28
<i>CSS Examples</i>	31

Color

**XYZ(47.1048, 27.8521,
19.7229)**

Conversions

Conversions Part 1

Format	Color
Hex	FF4D75
RGB	255, 77, 117
RGB Percent	100%, 30%, 46%
CMY	0.0000, 0.6980, 0.5412
CMYK	0.00, 0.70, 0.54, 0.00
HSL	347°, 100%, 65%
HSV	347°, 70%, 100%
XYZ	47.1048, 27.8521, 19.7229
YIQ	134.7820, 93.2480, 50.1760

Conversions

Conversions Part 2

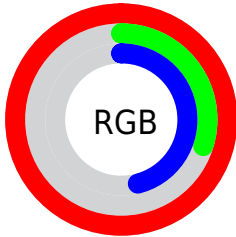
Format	Color
R_{YB}	255, 77, 117
Decimal	16731509
CIE _{Lab}	59.75, 69.15, 17.45
CIE _{LCh}	60, 71.319, 14.163
Yxy	27.8521, 0.4975, 0.2942
Android (android.graphics.Color)	4294921589 (0xFFFF4D75)
YUV	134.7820, -8.7665, 105.4312
Hunter-Lab	52.7751, 66.9651, 14.7849

Details

The XYZ color **47.1048, 27.8521, 19.7229** is a dark color, and the websafe version is hex **FF3366**. The color can be described as middle washed rose. A complement of this color would be **51.0885, 78.0049, 76.6610**, and the grayscale version is **22.9572, 24.1528, 26.3024**.

A 20% lighter version of the original color is **57.3471, 42.0159, 42.6235**, and **22.8124, 11.6361, 6.6739** is the 20% darker color. If you saturate the color by 10%, you get **44.6146, 24.5399, 13.7507**, and if you desaturate by 10%, it is **50.5407, 32.6631, 27.2218**.

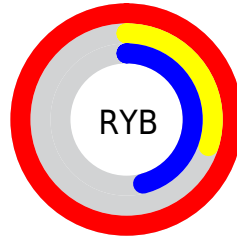
Distribution



Red (100%)

Green (30%)

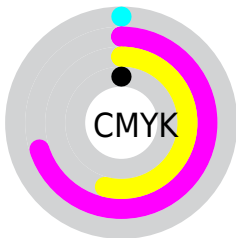
Blue (46%)



Red (100%)

Yellow (30%)

Blue (46%)

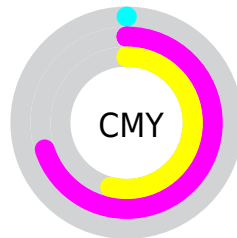


Cyan (0%)

Magenta (70%)

Yellow (54%)

Black (0%)



Cyan (0%)

Magenta (70%)

Yellow (54%)

Brightness & Saturation Gradients

These gradients show how the XYZ color 47.1048, 27.8521, 19.7229 changes by changing the brightness by 10 percent. The first figure shows a shift by +10% for each color and the second figure -10%.

Similar to the brightness gradients but the following saturation gradients show a change of the XYZ color 47.1048, 27.8521, 19.7229 by changing the saturation by 10% instead.

47.1048, 27.8521,
19.7229

47.1048, 27.8521,
19.7229

365.8746,
291.7595, 262.9655

33.3268, 18.2142,
12.0117

85.0878, 56.2482,
43.8050

22.5373, 11.1039,
6.6290

110.0236, 75.7752,
61.0129

14.3711, 6.1367,
3.1563

139.4093, 99.3674,
82.2235

8.4626, 2.9284,
1.1750

173.6103,
127.4091, 107.8553

4.4467, 1.0945,
0.0000

212.9920,
160.2848, 138.3269

1.9578, 0.0000,
0.0000

257.9197,

0.6101, 0.0000,

198.3789, 174.0568

0.0000

308.7588,
242.0756, 215.4634

■ 0.0000, 0.0000,
0.0000

■ 47.1048, 27.8521,
19.7229

■ 47.1048, 27.8521,
19.7229

■ 44.6146, 24.5399,
13.7507

■ 50.5407, 32.6631,
27.2218

■ 42.9654, 22.5416,
9.1929

■ 55.0073, 39.1200,
36.3455

■ 42.0012, 21.5734,
5.9119

■ 60.5825, 47.3572,
47.1847

■ 41.9857, 21.5583,
5.8574

■ 67.3357, 57.4941,
59.8231

■ 75.3304, 69.6396,
74.3388

 84.6258, 83.8943,
90.8049

95.0499, 99.9999,
108.9000

Harmonies

Analogous

The Analogous color harmony consists of three colors that are next to each other on the color wheel.



46.9124, 27.8521, 46.0045



47.1048, 27.8521, 19.7229



40.9677, 27.8521, 7.2127

Triad

The Triadic color harmony groups three colors that are evenly spaced from another and form a triangle on the color wheel.



47.1048, 27.8521, 19.7229



16.1333, 27.8521, 6.8257



22.0152, 27.8521, 107.6205

Complementary

The Complementary color scheme is a pair of colors which are on the opposite of each other on the color wheel.



47.1048, 27.8521, 19.7229



51.0885, 78.0049, 76.6610

Split Complementary

Split-complementary colors differ from the complementary color scheme. The scheme consists of three colors, the original color and two neighbors of the complement color.



15.8769, 27.8521, 79.7730



47.1048, 27.8521, 19.7229



13.0458, 27.8521, 18.6886

Square

The Square scheme is like the rectangle color scheme, but the four colors are evenly spaced on the color wheel.



47.1048, 27.8521, 19.7229



22.4512, 27.8521, 3.1597



12.9641, 27.8521, 44.1773



30.9476, 27.8521, 108.4973

Rectangle

The Rectangle color scheme consists of four colors that form a rectangle on the color wheel.



47.1048, 27.8521, 19.7229



34.7748, 27.8521, 3.9885



12.9641, 27.8521, 44.1773



19.6096, 27.8521, 100.6117

Sweetspot

The Sweet Spot groups the original color and five complimentary colors.



47.1055, 27.8537, 19.7233



74.3031, 68.0720, 72.4945



48.2815, 26.7458, 97.2252



15.4133, 13.8230, 14.6316



0.0000, 0.0000, 0.0000



20.3446, 21.4041, 23.3091

Same Dimension

The Same Dimension uses a secret algorithm to generate beautiful new colors.



47.1055, 27.8537, 19.7233



43.8261, 23.5521, 11.6707



49.8472, 36.3306, 11.4086



18.1765, 18.0539, 19.5464



21.9843, 11.2830, 3.3016



2.1796, 1.1142, 0.5272

Inverse Universe

The Inverse Universe completely reimagines the original color for something new.



47.1055, 27.8537, 19.7233



43.8261, 23.5521, 11.6707



43.5544, 53.6842, 102.6740



18.1765, 18.0539, 19.5464



21.9843, 11.2830, 3.3016



2.1796, 1.1142, 0.5272

Previews

White Background



This preview shows how the XYZ color 47.1048, 27.8521, 19.7229 looks on a white background.

Color Contrast Check

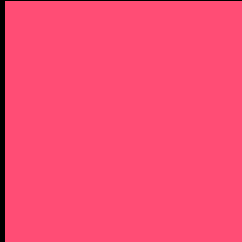
Large Text (above 18pt) WCAG AA ✓ Pass

Any Text WCAG AA × Fail

Large Text (above 18pt) WCAG AAA × Fail

Any Text WCAG AAA × Fail

Black Background



This preview shows how the XYZ color 47.1048, 27.8521, 19.7229 looks on a black background.

Color Contrast Check

Large Text (above 18pt) WCAG AA ✓ Pass

Any Text WCAG AA ✓ Pass

Large Text (above 18pt) WCAG AAA ✓ Pass

Any Text WCAG AAA × Fail

If you want to check with other color combinations, try the [Color Contrast Checker](#).

XYZ 47.1048, 27.8521, 19.7229

Background



This preview shows how black text looks on a background with the XYZ color 47.1048, 27.8521, 19.7229.



This preview shows how white text looks on a background with the XYZ color 47.1048, 27.8521,

Color Blindness Simulation

Color vision deficiency is a very complex topic, and I could not describe the different causes any better than Wikipedia does, so if you want to learn more, you should check out their [article about color blindness](#).

Dichromacy



Original Color

47.1048, 27.8521, 19.7229

Protanopia

27.0045, 27.8667, 32.8097

Deuteranopia

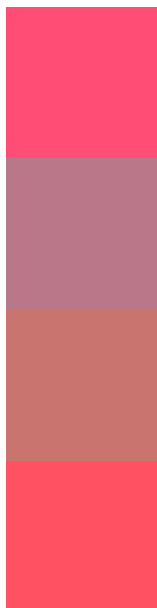
28.3728, 27.8057, 18.0590



Tritanopia

45.3216, 27.7573, 11.9858

Trichromacy



Original Color

47.1048, 27.8521, 19.7229

Protanomaly

31.1919, 25.3429, 27.2924

Deuteranomaly

33.2020, 26.0560, 18.3183

Tritanomaly

46.0201, 27.8375, 14.5029

Monochromacy



Original Color

47.1048, 27.8521, 19.7229

Achromatopsia

23.0288, 24.2281, 26.3844

Achromatomaly

28.5040, 23.1768, 23.3933

CSS Examples

Text

The CSS property to change the color of the text to XYZ 47.1048, 27.8521, 19.7229 is called "color". The color property can be set on classes, ids or directly on the HTML element.

This example shows how text in the color `rgb(255, 77, 117)` looks like.

```
.text, #text, p{  
    color:rgb(255, 77, 117)  
}
```

If you want to add a text shadow in that color use the text-shadow property, you can generate a text shadow directly with our [CSS Text Shadow Generator](#).

Here you see how black text with a 4 pixel rgb(255, 77, 117) colored shadow looks like.

```
.shadow{ text-shadow: 4px 4px 2px rgb(255, 77, 117) }
```

Border

The CSS property to change the border of an element to XYZ 47.1048, 27.8521, 19.7229 is called "border". The border property can be set on classes, ids or directly on the HTML element.

This example shows the color as border, it can be applied via the CSS property "border" or "border-color".

```
.border, #border, table{ border:4px solid rgb(255, 77, 117) }
```


If only the border color should be changed use the property `border-color`.

```
.border{ border-color:rgb(255, 77, 117) }
```

If you want to add a box shadow in that color use:

Here you see how a box with a 4 pixel `rgb(255, 77, 117)` colored shadow looks like.

```
.boxshadow{ -moz-box-shadow:4px 4px 4px  
4px rgb(255, 77, 117); -webkit-box-  
shadow:4px 4px 4px 4px rgb(255, 77, 117);  
box-shadow:4px 4px 4px 4px rgb(255, 77,  
117) }
```

Background

The CSS property to change the background color of an element to XYZ 47.1048, 27.8521, 19.7229 is called "background". The background property can be set on classes, ids or directly on the HTML element.

```
.background, #background, body{  
background: rgb(255, 77, 117) }
```

If only the background color should be changed can be used:

```
.background{ background-color: rgb(255, 77,  
117) }
```

This example shows the color as background, it is applied via the CSS property "background".

To optimize and compress your CSS code, you can use our [online CSS compressor and optimizer](#) based on csstidy. If you want to create a linear or radial gradient as background or border, check our [CSS Gradient Generator](#).

Hey! You found this booklet interesting? Support Converting Colors with the new Membership Option!

The pro membership hides all ads, plus gives you double the colors in the color bucket, and more awesome pro features!

[Learn more, Memberships starting at \\$2.50/m!](#)

**Follow me
on Twitter!**

@ConvertingColor