

Converting Colors

XYZ(47.1621, 47.8915, 39.0993)

Have a look what the booklet for
XYZ(47.1621, 47.8915, 39.0993)
contains.

XYZ(47.1214, 47.8076, 39.0920)	3
<i>Conversions</i>	4
<i>Details</i>	6
<i>Harmonies</i>	12
<i>Previews</i>	24
<i>Color Blindness Simulation</i>	28
<i>CSS Examples</i>	31

Color

**XYZ(47.1214, 47.8076,
39.0920)**

Conversions

Conversions Part 1

Format	Color
Hex	CBB49E
RGB	203, 180, 158
RGB Percent	80%, 71%, 62%
CMY	0.2039, 0.2941, 0.3804
CMYK	0.00, 0.11, 0.22, 0.20
HSL	29°, 30%, 71%
HSV	29°, 22%, 80%
XYZ	47.1214, 47.8076, 39.0920
YIQ	184.3690, 20.7700, -1.9660

Conversions

Conversions Part 2

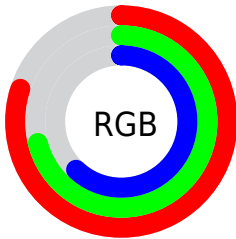
Format	Color
RYB	203, 201, 158
Decimal	13350046
CIELab	74.70, 4.76, 14.24
CIELCh	75, 15.014, 71.496
Yxy	47.8076, 0.3516, 0.3567
Android (android.graphics.Color)	4291540126 (0xFFCBB49E)
YUV	184.3690, -12.9999, 16.3394
Hunter-Lab	69.1430, 0.6485, 14.8788

Details

The XYZ color **47.1214, 47.8076, 39.0920** is a light color, and the websafe version is hex **CCCCCC**. A complement of this color would be **41.4037, 44.6276, 62.9320**, and the grayscale version is **45.8267, 48.2132, 52.5042**.

A 20% lighter version of the original color is **83.2457, 86.0550, 75.1735**, and **22.4560, 22.5362, 17.0763** is the 20% darker color. If you saturate the color by 10%, you get **43.5003, 43.1343, 29.9646**, and if you desaturate by 10%, it is **51.1905, 52.9143, 49.7938**.

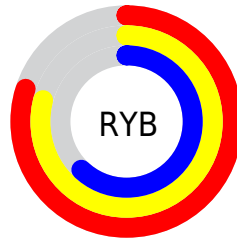
Distribution



Red (80%)

Green (71%)

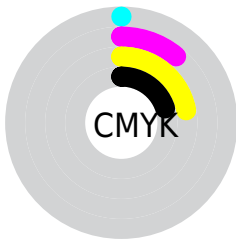
Blue (62%)



Red (80%)

Yellow (79%)

Blue (62%)

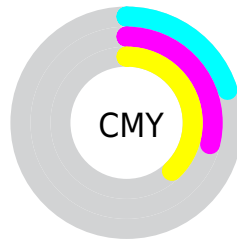


Cyan (0%)

Magenta (11%)

Yellow (22%)

Black (20%)



Cyan (20%)


Magenta (29%)


Yellow (38%)

Brightness & Saturation Gradients


These gradients show how the XYZ color 47.1214, 47.8076, 39.0920 changes by changing the brightness by 10 percent. The first figure shows a shift by +10% for each color and the second figure -10%.


Similar to the brightness gradients but the following saturation gradients show a change of the XYZ color 47.1214, 47.8076, 39.0920 by changing the saturation by 10% instead.

 47.1214, 47.8076,
39.0920


 47.1214, 47.8076,
39.0920


365.9397,
378.0290, 357.7191

 33.3400, 33.6745,
26.5229


 85.1124, 86.9179,
75.0007

 22.5475, 22.6437,
16.9860

 110.0528,
112.6639, 99.1775

 14.3786, 14.3306,
10.0626

139.4435,
143.0497, 128.0605

 8.4679, 8.3510,
5.3344

173.6499,
178.4596, 162.0684

 4.4501, 4.3203,
2.3826

213.0374,
219.2781, 201.6196

 1.9598, 1.8543,
0.7769

257.9713,

 0.6112, 0.5207,

265.8896, 247.1328

0.0000

308.8169,
318.6784, 299.0265

■ 0.0000, 0.0000,
0.0000

■ 47.1214, 47.8076,
39.0920

■ 47.1214, 47.8076,
39.0920

■ 43.5003, 43.1343,
29.9646

■ 51.1905, 52.9143,
49.7938

■ 40.3057, 38.8753,
22.3330

■ 55.7203, 58.4596,
62.1377

■ 37.5202, 35.0196,
16.1160

■ 60.7276, 64.4572,
76.1908

■ 35.1231, 31.5532,
11.2236

■ 66.2272, 70.9179,
92.0156

■ 33.0918, 28.4609,
7.5553

■ 71.4999, 77.5589,
105.8097

■ 31.4007, 25.7261,
4.9959

■ 74.5047, 83.5684,
106.8112

■ 30.0198, 23.3302,
3.4073

■ 77.6847, 89.9284,
107.8712

■ 29.1155, 21.6701,
2.6482

■ 78.4387, 91.4366,
108.1226

Harmonies

Analogous

The Analogous color harmony consists of three colors that are next to each other on the color wheel.



49.4745, 47.8076, 42.7392



47.1214, 47.8076, 39.0920



44.4043, 47.8076, 38.7015

Triad

The Triadic color harmony groups three colors that are evenly spaced from another and form a triangle on the color wheel.



47.1214, 47.8076, 39.0920



40.5004, 47.8076, 55.1000



48.9972, 47.8076, 64.1105

Complementary

The Complementary color scheme is a pair of colors which are on the opposite of each other on the color wheel.



47.1214, 47.8076, 39.0920



41.4037, 44.6276, 62.9320

Split Complementary

Split-complementary colors differ from the complementary color scheme. The scheme consists of three colors, the original color and two neighbors of the complement color.



46.4911, 47.8076, 68.1716



47.1214, 47.8076, 39.0920



41.6304, 47.8076, 62.6333

Square

The Square scheme is like the rectangle color scheme, but the four colors are evenly spaced on the color wheel.



47.1214, 47.8076, 39.0920



40.6540, 47.8076, 47.4398



43.7985, 47.8076, 67.6055



50.5870, 47.8076, 56.9589

Rectangle

The Rectangle color scheme consists of four colors that form a rectangle on the color wheel.



47.1214, 47.8076, 39.0920



42.7592, 47.8076, 40.2886



43.7985, 47.8076, 67.6055



48.2299, 47.8076, 65.9131

Sweetspot

The Sweet Spot groups the original color and five complimentary colors.



47.1227, 47.8098, 39.0930



89.4667, 93.2207, 93.5137



45.2221, 40.4973, 49.2845



19.0505, 19.8317, 19.7461



0.0000, 0.0000, 0.0000



20.3446, 21.4041, 23.3091

Same Dimension

The Same Dimension uses a secret algorithm to generate beautiful new colors.



47.1227, 47.8098, 39.0930



75.6638, 75.9014, 57.2006



51.9798, 57.5240, 40.7120



11.6576, 12.1042, 11.8014



18.6195, 13.9720, 1.7155



1.0365, 0.8726, 0.1138

Inverse Universe

The Inverse Universe completely reimagines the original color for something new.



41.4037, 44.6276, 62.9320



64.2809, 69.5673, 104.6476



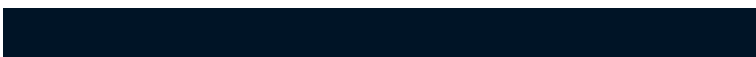
37.2358, 36.2920, 61.5427



11.0678, 11.7760, 14.2600



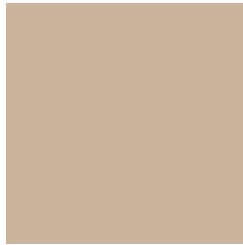
10.0851, 9.1942, 37.1994



0.5961, 0.6260, 1.9444

Previews

White Background



This preview shows how the XYZ color 47.1214, 47.8076, 39.0920 looks on a white background.

Color Contrast Check

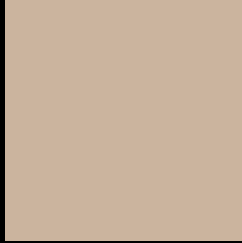
Large Text (above 18pt) WCAG AA × Fail

Any Text WCAG AA × Fail

Large Text (above 18pt) WCAG AAA × Fail

Any Text WCAG AAA × Fail

Black Background



This preview shows how the XYZ color 47.1214, 47.8076, 39.0920 looks on a black background.

Color Contrast Check

Large Text (above 18pt) WCAG AA ✓ Pass

Any Text WCAG AA ✓ Pass

Large Text (above 18pt) WCAG AAA ✓ Pass

Any Text WCAG AAA ✓ Pass

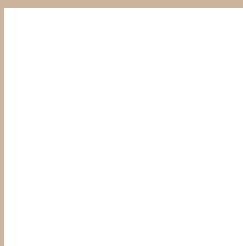
If you want to check with other color combinations, try the [Color Contrast Checker](#).

XYZ 47.1214, 47.8076, 39.0920

Background



This preview shows how black text looks on a background with the XYZ color 47.1214, 47.8076, 39.0920.



This preview shows how white text looks on a background with the XYZ color 47.1214, 47.8076,

Color Blindness Simulation

Color vision deficiency is a very complex topic, and I could not describe the different causes any better than Wikipedia does, so if you want to learn more, you should check out their [article about color blindness](#).

Dichromacy



Original Color

47.1214, 47.8076, 39.0920

Protanopia

45.2710, 47.7425, 40.0869

Deuteranopia

48.8441, 47.7964, 39.4521



Tritanopia

50.4428, 47.9902, 54.7485

Trichromacy



Original Color

47.1214, 47.8076, 39.0920

Protanomaly

46.0119, 47.8294, 39.6078

Deuteranomaly

48.1908, 47.7539, 39.4784

Tritanomaly

49.2116, 47.7804, 48.7483

Monochromacy



Original Color

47.1214, 47.8076, 39.0920

Achromatopsia

45.5594, 47.9320, 52.1980

Achromatomaly

46.1572, 48.0385, 47.3970

CSS Examples

Text

The CSS property to change the color of the text to XYZ 47.1214, 47.8076, 39.0920 is called "color". The color property can be set on classes, ids or directly on the HTML element.

This example shows how text in the color `rgb(203, 180, 158)` looks like.

```
.text, #text, p{  
    color:rgb(203, 180, 158)  
}
```

If you want to add a text shadow in that color use the text-shadow property, you can generate a text shadow directly with our [CSS Text Shadow Generator](#).

Here you see how black text with a 4 pixel rgb(203, 180, 158) colored shadow looks like.

```
.shadow{ text-shadow: 4px 4px 2px rgb(203, 180, 158) }
```

Border

The CSS property to change the border of an element to XYZ 47.1214, 47.8076, 39.0920 is called "border". The border property can be set on classes, ids or directly on the HTML element.

This example shows the color as border, it can be applied via the CSS property "border" or "border-color".

```
.border, #border, table{ border:4px solid rgb(203, 180, 158) }
```


If only the border color should be changed use the property `border-color`.

```
.border{ border-color:rgb(203, 180, 158) }
```

If you want to add a box shadow in that color use:

Here you see how a box with a 4 pixel `rgb(203, 180, 158)` colored shadow looks like.

```
.boxshadow{ -moz-box-shadow:4px 4px 4px  
4px rgb(203, 180, 158); -webkit-box-  
shadow:4px 4px 4px 4px rgb(203, 180, 158);  
box-shadow:4px 4px 4px 4px rgb(203, 180,  
158) }
```

Background

The CSS property to change the background color of an element to XYZ 47.1214, 47.8076, 39.0920 is called "background". The background property can be set on classes, ids or directly on the HTML element.

```
.background, #background, body{  
background: rgb(203, 180, 158) }
```

If only the background color should be changed can be used:

```
.background{ background-color: rgb(203,  
180, 158) }
```

This example shows the color as background, it is applied via the CSS property "background".

To optimize and compress your CSS code, you can use our [online CSS compressor and optimizer](#) based on csstidy. If you want to create a linear or radial gradient as background or border, check our [CSS Gradient Generator](#).

Hey! You found this booklet interesting? Support Converting Colors with the new Membership Option!

The pro membership hides all ads, plus gives you double the colors in the color bucket, and more awesome pro features!

[Learn more, Memberships starting at \\$2.50/m!](#)

**Follow me
on Twitter!**

@ConvertingColor