

Converting Colors

XYZ(47.2027, 45.0683, 46.7204)

Have a look what the booklet for
XYZ(47.2027, 45.0683, 46.7204)
contains.

XYZ(47.2026, 45.0583, 46.7667)	3
<i>Conversions</i>	4
<i>Details</i>	6
<i>Harmonies</i>	12
<i>Previews</i>	24
<i>Color Blindness Simulation</i>	28
<i>CSS Examples</i>	31

Color

**XYZ(47.2026, 45.0583,
46.7667)**

Conversions

Conversions Part 1

Format	Color
Hex	CCABAF
RGB	204, 171, 175
RGB Percent	80%, 67%, 69%
CMY	0.2000, 0.3294, 0.3137
CMYK	0.00, 0.16, 0.14, 0.20
HSL	353°, 24%, 74%
HSV	353°, 16%, 80%
XYZ	47.2026, 45.0583, 46.7667
YIQ	181.3230, 18.3840, 8.2400

Conversions

Conversions Part 2

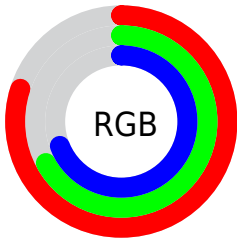
Format	Color
RYB	204, 171, 175
Decimal	13413295
CIELab	72.93, 12.63, 2.43
CIELCh	73, 12.866, 10.878
Yxy	45.0583, 0.3395, 0.3241
Android (android.graphics.Color)	4291603375 (0xFFCCABAF)
YUV	181.3230, -3.1172, 19.8877
Hunter-Lab	67.1255, 8.0515, 5.6802

Details

The XYZ color **47.2026, 45.0583, 46.7667** is a light color, and the websafe version is hex **CC9999**. A complement of this color would be **48.8145, 56.0149, 62.8855**, and the grayscale version is **44.1062, 46.4031, 50.5330**.

A 20% lighter version of the original color is **82.7193, 81.3659, 86.2083**, and **22.5664, 21.0133, 21.6055** is the 20% darker color. If you saturate the color by 10%, you get **41.9971, 37.2805, 36.9128**, and if you desaturate by 10%, it is **53.2392, 54.1231, 58.0522**.

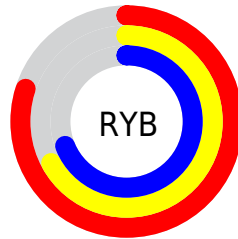
Distribution



Red (80%)

Green (67%)

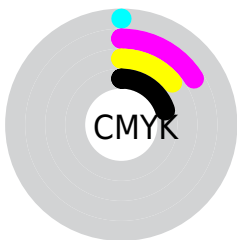
Blue (69%)



Red (80%)

Yellow (67%)

Blue (69%)

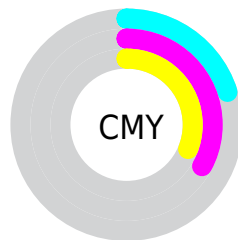


Cyan (0%)

Magenta (16%)

Yellow (14%)

Black (20%)



Cyan (20%)

Magenta (33%)

Yellow (31%)

Brightness & Saturation Gradients

These gradients show how the XYZ color 47.2026, 45.0583, 46.7667 changes by changing the brightness by 10 percent. The first figure shows a shift by +10% for each color and the second figure -10%.

Similar to the brightness gradients but the following saturation gradients show a change of the XYZ color 47.2026, 45.0583, 46.7667 by changing the saturation by 10% instead.

■ 47.2026, 45.0583,
46.7667

■ 47.2026, 45.0583,
46.7667

366.2581,
367.0096, 390.2493

■ 33.4045, 31.5033,
32.4982

■ 85.2329, 82.8079,
86.7116

■ 22.5972, 20.9824,
21.4744

110.1957,
107.7713, 113.2251

■ 14.4154, 13.1112,
13.2766

139.6108,
137.3064, 144.6574

■ 8.4938, 7.5051,
7.4863

173.8436,
171.7974, 181.4270

■ 4.4669, 3.7800,
3.6850

213.2593,
211.6289, 223.9525

■ 1.9695, 1.5513,
1.4542

258.2234,

■ 0.6168, 0.3244,

257.1851, 272.6523

0.1835

309.1012,
308.8506, 327.9451

■ 0.0000, 0.0000,
0.0000

■ 47.2026, 45.0583,
46.7667

■ 47.2026, 45.0583,
46.7667

■ 41.9971, 37.2805,
36.9128

■ 53.2392, 54.1231,
58.0522

■ 37.5826, 30.7255,
28.4306

■ 60.1371, 64.5231,
70.8205

■ 33.9212, 25.3329,
21.2597

■ 67.9298, 76.3116,
85.1238

■ 30.9707, 21.0347,
15.3346

■ 76.6479, 89.5370,
101.0106

■ 28.6843, 17.7558,
10.5838

■ 78.7121, 91.5775,
108.1354

■ 27.0098, 15.4115,
6.9285

■ 25.8871, 13.9037,
4.2802

■ 25.2416, 13.1088,
2.5357

■ 25.0744, 12.9064,
2.0729

Harmonies

Analogous

The Analogous color harmony consists of three colors that are next to each other on the color wheel.



47.0316, 45.0583, 53.2187



47.2026, 45.0583, 46.7667



46.1706, 45.0583, 41.4138

Triad

The Triadic color harmony groups three colors that are evenly spaced from another and form a triangle on the color wheel.



47.2026, 45.0583, 46.7667



40.0658, 45.0583, 40.3026



41.4294, 45.0583, 61.6794

Complementary

The Complementary color scheme is a pair of colors which are on the opposite of each other on the color wheel.



47.2026, 45.0583, 46.7667



48.8145, 56.0149, 62.8855

Split Complementary

Split-complementary colors differ from the complementary color scheme. The scheme consists of three colors, the original color and two neighbors of the complement color.



39.6480, 45.0583, 57.5956



47.2026, 45.0583, 46.7667



38.8799, 45.0583, 45.1253

Square

The Square scheme is like the rectangle color scheme, but the four colors are evenly spaced on the color wheel.



47.2026, 45.0583, 46.7667



42.0178, 45.0583, 37.9043



38.7297, 45.0583, 51.4288



43.6456, 45.0583, 62.2162

Rectangle

The Rectangle color scheme consists of four colors that form a rectangle on the color wheel.



47.2026, 45.0583, 46.7667



44.9597, 45.0583, 39.0432



38.7297, 45.0583, 51.4288



40.7620, 45.0583, 60.6602

Sweetspot

The Sweet Spot groups the original color and five complimentary colors.



47.2039, 45.0603, 46.7676



89.3645, 91.4323, 98.3624



49.1761, 45.7119, 63.3586



18.9630, 19.3224, 20.7475



0.0000, 0.0000, 0.0000



20.3446, 21.4041, 23.3091

Same Dimension

The Same Dimension uses a secret algorithm to generate beautiful new colors.



47.2039, 45.0603, 46.7676



75.3804, 70.4425, 72.1880



49.2080, 49.6876, 45.5276



11.2667, 11.2354, 11.9390



15.8005, 8.1308, 1.4019



0.8340, 0.4270, 0.1715

Inverse Universe

The Inverse Universe completely reimagines the original color for something new.



47.2039, 45.0603, 46.7676



75.3804, 70.4425, 72.1880



46.5230, 50.6745, 64.4564



11.2667, 11.2354, 11.9390



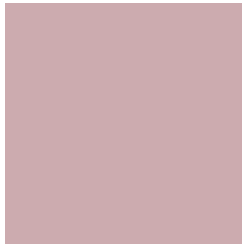
15.8005, 8.1308, 1.4019



0.8340, 0.4270, 0.1715

Previews

White Background



This preview shows how the XYZ color 47.2026, 45.0583, 46.7667 looks on a white background.

Color Contrast Check

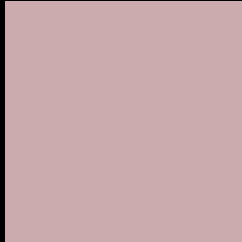
Large Text (above 18pt) WCAG AA × Fail

Any Text WCAG AA × Fail

Large Text (above 18pt) WCAG AAA × Fail

Any Text WCAG AAA × Fail

Black Background



This preview shows how the XYZ color 47.2026, 45.0583, 46.7667 looks on a black background.

Color Contrast Check

Large Text (above 18pt) WCAG AA ✓ Pass

Any Text WCAG AA ✓ Pass

Large Text (above 18pt) WCAG AAA ✓ Pass

Any Text WCAG AAA ✓ Pass

If you want to check with other color combinations, try the [Color Contrast Checker](#).

XYZ 47.2026, 45.0583, 46.7667

Background



This preview shows how black text looks on a background with the XYZ color 47.2026, 45.0583, 46.7667.



This preview shows how white text looks on a background with the XYZ color 47.2026, 45.0583,

Color Blindness Simulation

Color vision deficiency is a very complex topic, and I could not describe the different causes any better than Wikipedia does, so if you want to learn more, you should check out their [article about color blindness](#).

Dichromacy



Original Color

47.2026, 45.0583, 46.7667

Protanopia

43.3485, 45.0405, 49.0568

Deuteranopia

45.9701, 44.9881, 46.8181



Tritanopia

48.0988, 45.1475, 50.9790

Trichromacy



Original Color

47.2026, 45.0583, 46.7667

Protanomaly

44.6011, 44.8214, 48.4202

Deuteranomaly

46.3098, 44.8796, 46.7793

Tritanomaly

47.7898, 45.0239, 49.3517

Monochromacy



Original Color

47.2026, 45.0583, 46.7667

Achromatopsia

43.9204, 46.2077, 50.3202

Achromatomaly

44.8451, 45.5178, 49.0700

CSS Examples

Text

The CSS property to change the color of the text to XYZ 47.2026, 45.0583, 46.7667 is called "color". The color property can be set on classes, ids or directly on the HTML element.

This example shows how text in the color `rgb(204, 171, 175)` looks like.

```
.text, #text, p{  
    color:rgb(204, 171, 175)  
}
```

If you want to add a text shadow in that color use the text-shadow property, you can generate a text shadow directly with our [CSS Text Shadow Generator](#).

Here you see how black text with a 4 pixel rgb(204, 171, 175) colored shadow looks like.

```
.shadow{ text-shadow: 4px 4px 2px rgb(204, 171, 175) }
```

Border

The CSS property to change the border of an element to XYZ 47.2026, 45.0583, 46.7667 is called "border". The border property can be set on classes, ids or directly on the HTML element.

This example shows the color as border, it can be applied via the CSS property "border" or "border-color".

```
.border, #border, table{ border:4px solid rgb(204, 171, 175) }
```


If only the border color should be changed use the property `border-color`.

```
.border{ border-color:rgb(204, 171, 175) }
```

If you want to add a box shadow in that color use:

Here you see how a box with a 4 pixel `rgb(204, 171, 175)` colored shadow looks like.

```
.boxshadow{ -moz-box-shadow:4px 4px 4px  
4px rgb(204, 171, 175); -webkit-box-  
shadow:4px 4px 4px 4px rgb(204, 171, 175);  
box-shadow:4px 4px 4px 4px rgb(204, 171,  
175) }
```

Background

The CSS property to change the background color of an element to XYZ 47.2026, 45.0583, 46.7667 is called "background". The background property can be set on classes, ids or directly on the HTML element.

```
.background, #background, body{  
background: rgb(204, 171, 175) }
```

If only the background color should be changed can be used:

```
.background{ background-color: rgb(204,  
171, 175) }
```

This example shows the color as background, it is applied via the CSS property "background".

To optimize and compress your CSS code, you can use our [online CSS compressor and optimizer](#) based on csstidy. If you want to create a linear or radial gradient as background or border, check our [CSS Gradient Generator](#).

Hey! You found this booklet interesting? Support Converting Colors with the new Membership Option!

The pro membership hides all ads, plus gives you double the colors in the color bucket, and more awesome pro features!

[Learn more, Memberships starting at \\$2.50/m!](#)

**Follow me
on Twitter!**

@ConvertingColor