

Converting Colors

XYZ(47.2032, 46.1370, 50.1330)

Have a look what the booklet for
XYZ(47.2032, 46.1370, 50.1330)
contains.

XYZ(47.2236, 46.1383, 50.1327)	3
<i>Conversions</i>	4
<i>Details</i>	6
<i>Harmonies</i>	12
<i>Previews</i>	24
<i>Color Blindness Simulation</i>	28
<i>CSS Examples</i>	31

Color

**XYZ(47.2236, 46.1383,
50.1327)**

Conversions

Conversions Part 1

Format	Color
Hex	C7AFB5
RGB	199, 175, 181
RGB Percent	78%, 69%, 71%
CMY	0.2196, 0.3137, 0.2902
CMYK	0.00, 0.12, 0.09, 0.22
HSL	345°, 18%, 73%
HSV	345°, 12%, 78%
XYZ	47.2236, 46.1383, 50.1327
YIQ	182.8600, 12.3780, 6.9540

Conversions

Conversions Part 2

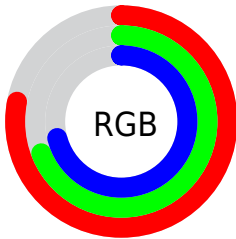
Format	Color
R_{YB}	199, 175, 181
Decimal	13086645
CIE _{Lab}	73.64, 9.66, 0.11
CIE _{LCh}	74, 9.656, 0.634
Yxy	46.1383, 0.3291, 0.3215
Android (android.graphics.Color)	4291276725 (0xFFC7AFB5)
YUV	182.8600, -0.9170, 14.1548
Hunter-Lab	67.9252, 5.2294, 3.7882

Details

The XYZ color **47.2236, 46.1383, 50.1327** is a light color, and the websafe version is hex **CCCCCC**. A complement of this color would be **47.7300, 53.8121, 58.3257**, and the grayscale version is **44.9342, 47.2743, 51.4817**.

A 20% lighter version of the original color is **85.1020, 84.5263, 91.9506**, and **22.6563, 21.7442, 23.4250** is the 20% darker color. If you saturate the color by 10%, you get **42.1819, 38.3757, 41.2960**, and if you desaturate by 10%, it is **53.0028, 55.1121, 60.0260**.

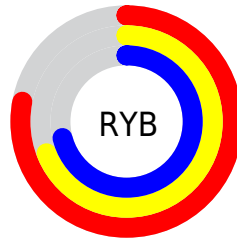
Distribution



Red (78%)

Green (69%)

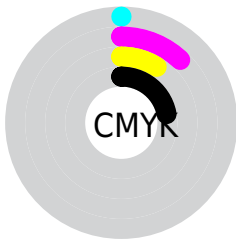
Blue (71%)



Red (78%)

Yellow (69%)

Blue (71%)

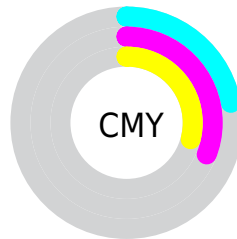


Cyan (0%)

Magenta (12%)

Yellow (9%)

Black (22%)



Cyan (22%)

Magenta (31%)

Yellow (29%)

Brightness & Saturation Gradients

These gradients show how the XYZ color 47.2236, 46.1383, 50.1327 changes by changing the brightness by 10 percent. The first figure shows a shift by +10% for each color and the second figure -10%.

Similar to the brightness gradients but the following saturation gradients show a change of the XYZ color 47.2236, 46.1383, 50.1327 by changing the saturation by 10% instead.

■ 47.2236, 46.1383,
50.1327

■ 47.2236, 46.1383,
50.1327

366.3404,
371.3644, 403.9346

■ 33.4211, 32.3550,
35.1469

■ 85.2640, 84.4259,
91.7698

■ 22.6100, 21.6328,
23.4916

110.2327,
109.6990, 119.2582

■ 14.4249, 13.5873,
14.7482

139.6541,
139.5708, 151.7512

■ 8.5005, 7.8342,
8.4982

173.8937,
174.4258, 189.6674

■ 4.4713, 3.9890,
4.3231

213.3167,
214.6482, 233.4253

■ 1.9721, 1.6674,
1.8042

258.2886,

■ 0.6182, 0.4024,

260.6225, 283.4434

0.4307

309.1747,
312.7331, 340.1403

■ 0.0000, 0.0000,
0.0000

■ 47.2236, 46.1383,
50.1327

■ 47.2236, 46.1383,
50.1327

■ 42.1819, 38.3757,
41.2960

■ 53.0028, 55.1121,
60.0260

■ 37.8438, 31.7665,
33.4776

■ 59.5440, 65.3398,
71.0068

■ 34.1784, 26.2571,
26.6411

■ 66.8750, 76.8693,
83.1080

■ 31.1512, 21.7874,
20.7468

■ 75.0215, 89.7441,
96.3607

■ 28.7243, 18.2913,
15.7520

■ 77.3633, 90.8822,
108.0723

■ 26.8557, 15.6953,
11.6109

■ 25.4976, 13.9151,
8.2729

■ 24.5938, 12.8503,
5.6818

■ 24.1232, 12.3701,
4.1032

Harmonies

Analogous

The Analogous color harmony consists of three colors that are next to each other on the color wheel.



46.7813, 46.1383, 54.9973



47.2236, 46.1383, 50.1327



46.7434, 46.1383, 45.5899

Triad

The Triadic color harmony groups three colors that are evenly spaced from another and form a triangle on the color wheel.



47.2236, 46.1383, 50.1327



42.1990, 46.1383, 42.5624



42.2604, 46.1383, 58.8980

Complementary

The Complementary color scheme is a pair of colors which are on the opposite of each other on the color wheel.



47.2236, 46.1383, 50.1327



47.7300, 53.8121, 58.3257

Split Complementary

Split-complementary colors differ from the complementary color scheme. The scheme consists of three colors, the original color and two neighbors of the complement color.



41.0844, 46.1383, 55.1892



47.2236, 46.1383, 50.1327



41.0496, 46.1383, 45.7591

Square

The Square scheme is like the rectangle color scheme, but the four colors are evenly spaced on the color wheel.



47.2236, 46.1383, 50.1327



43.8167, 46.1383, 41.3971



40.6469, 46.1383, 50.3410



43.8894, 46.1383, 60.2530

Rectangle

The Rectangle color scheme consists of four colors that form a rectangle on the color wheel.



47.2236, 46.1383, 50.1327



45.9717, 46.1383, 43.3030



40.6469, 46.1383, 50.3410



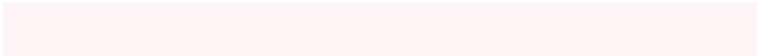
41.8005, 46.1383, 57.8738

Sweetspot

The Sweet Spot groups the original color and five complimentary colors.



47.2249, 46.1403, 50.1337



90.6743, 93.1808, 101.4849



47.6326, 46.1231, 60.4253



19.2372, 19.6787, 21.4309



0.0000, 0.0000, 0.0000



20.3446, 21.4041, 23.3091

Same Dimension

The Same Dimension uses a secret algorithm to generate beautiful new colors.



47.2249, 46.1403, 50.1337



80.6842, 77.6934, 84.3036



47.8164, 48.2869, 47.3601



10.7408, 10.6797, 11.6182



15.5417, 7.9662, 2.7964



0.7660, 0.3892, 0.2909

Inverse Universe

The Inverse Universe completely reimagines the original color for something new.



47.2249, 46.1403, 50.1337



80.6842, 77.6934, 84.3036



47.0595, 51.3788, 61.4700



10.7408, 10.6797, 11.6182



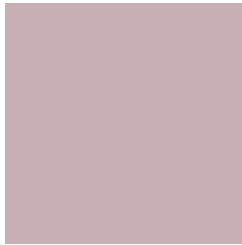
15.5417, 7.9662, 2.7964



0.7660, 0.3892, 0.2909

Previews

White Background



This preview shows how the XYZ color 47.2236, 46.1383, 50.1327 looks on a white background.

Color Contrast Check

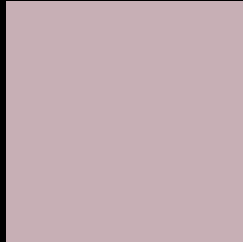
Large Text (above 18pt) WCAG AA × Fail

Any Text WCAG AA × Fail

Large Text (above 18pt) WCAG AAA × Fail

Any Text WCAG AAA × Fail

Black Background



This preview shows how the XYZ color 47.2236, 46.1383, 50.1327 looks on a black background.

Color Contrast Check

Large Text (above 18pt) WCAG AA ✓ Pass

Any Text WCAG AA ✓ Pass

Large Text (above 18pt) WCAG AAA ✓ Pass

Any Text WCAG AAA ✓ Pass

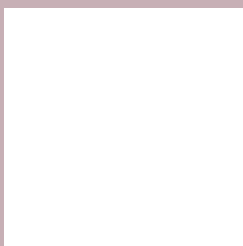
If you want to check with other color combinations, try the [Color Contrast Checker](#).

XYZ 47.2236, 46.1383, 50.1327

Background



This preview shows how black text looks on a background with the XYZ color 47.2236, 46.1383, 50.1327.



This preview shows how white text looks on a background with the XYZ color 47.2236, 46.1383,

Color Blindness Simulation

Color vision deficiency is a very complex topic, and I could not describe the different causes any better than Wikipedia does, so if you want to learn more, you should check out their [article about color blindness](#).

Dichromacy



Original Color

47.2236, 46.1383, 50.1327

Protanopia

44.5014, 46.1705, 51.9137

Deuteranopia

46.9592, 46.0019, 50.1203



Tritanopia

48.0326, 46.1823, 53.9594

Trichromacy



Original Color

47.2236, 46.1383, 50.1327

Protanomaly

45.4539, 46.0785, 51.2981

Deuteranomaly

46.9592, 46.0019, 50.1203

Tritanomaly

47.7124, 46.0542, 52.2736

Monochromacy



Original Color

47.2236, 46.1383, 50.1327

Achromatopsia

45.0092, 47.3531, 51.5676

Achromatomaly

45.7510, 46.8387, 50.8854

CSS Examples

Text

The CSS property to change the color of the text to XYZ 47.2236, 46.1383, 50.1327 is called "color". The color property can be set on classes, ids or directly on the HTML element.

This example shows how text in the color `rgb(199, 175, 181)` looks like.

```
.text, #text, p{  
    color:rgb(199, 175, 181)  
}
```

If you want to add a text shadow in that color use the text-shadow property, you can generate a text shadow directly with our [CSS Text Shadow Generator](#).

Here you see how black text with a 4 pixel rgb(199, 175, 181) colored shadow looks like.

```
.shadow{ text-shadow: 4px 4px 2px rgb(199, 175, 181) }
```

Border

The CSS property to change the border of an element to XYZ 47.2236, 46.1383, 50.1327 is called "border". The border property can be set on classes, ids or directly on the HTML element.

This example shows the color as border, it can be applied via the CSS property "border" or "border-color".

```
.border, #border, table{ border:4px solid rgb(199, 175, 181) }
```


If only the border color should be changed use the property `border-color`.

```
.border{ border-color:rgb(199, 175, 181) }
```

If you want to add a box shadow in that color use:

Here you see how a box with a 4 pixel `rgb(199, 175, 181)` colored shadow looks like.

```
.boxshadow{ -moz-box-shadow:4px 4px 4px  
4px rgb(199, 175, 181); -webkit-box-  
shadow:4px 4px 4px 4px rgb(199, 175, 181);  
box-shadow:4px 4px 4px 4px rgb(199, 175,  
181) }
```

Background

The CSS property to change the background color of an element to XYZ 47.2236, 46.1383, 50.1327 is called "background". The background property can be set on classes, ids or directly on the HTML element.

```
.background, #background, body{  
background: rgb(199, 175, 181) }
```

If only the background color should be changed can be used:

```
.background{ background-color: rgb(199,  
175, 181) }
```

This example shows the color as background, it is applied via the CSS property "background".

To optimize and compress your CSS code, you can use our [online CSS compressor and optimizer](#) based on csstidy. If you want to create a linear or radial gradient as background or border, check our [CSS Gradient Generator](#).

Hey! You found this booklet interesting? Support Converting Colors with the new Membership Option!

The pro membership hides all ads, plus gives you double the colors in the color bucket, and more awesome pro features!

[Learn more, Memberships starting at \\$2.50/m!](#)

**Follow me
on Twitter!**

@ConvertingColor