

Converting Colors

XYZ(47.2123, 46.7039, 47.3503)

Have a look what the booklet for
XYZ(47.2123, 46.7039, 47.3503)
contains.

XYZ(47.3780, 46.8582, 47.6217)	3
<i>Conversions</i>	4
<i>Details</i>	6
<i>Harmonies</i>	12
<i>Previews</i>	24
<i>Color Blindness Simulation</i>	28
<i>CSS Examples</i>	31

Color

**XYZ(47.3780, 46.8582,
47.6217)**

Conversions

Conversions Part 1

Format	Color
Hex	C8B1B0
RGB	200, 177, 176
RGB Percent	78%, 69%, 69%
CMY	0.2157, 0.3059, 0.3098
CMYK	0.00, 0.11, 0.12, 0.22
HSL	3°, 18%, 74%
HSV	3°, 12%, 78%
XYZ	47.3780, 46.8582, 47.6217
YIQ	183.7630, 14.0290, 4.5650

Conversions

Conversions Part 2

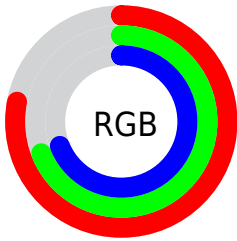
Format	Color
R _{YB}	200, 177, 176
Decimal	13152688
CIE Lab	74.10, 8.09, 3.53
CIE LCh	74, 8.824, 23.576
Yxy	46.8582, 0.3340, 0.3303
Android (android.graphics.Color)	4291342768 (0xFFC8B1B0)
YUV	183.7630, -3.8272, 14.2398
Hunter-Lab	68.4530, 3.7513, 6.6700

Details

The XYZ color **47.3780, 46.8582, 47.6217** is a light color, and the websafe version is hex **CCCCCC**. A complement of this color would be **48.7530, 54.2460, 62.5450**, and the grayscale version is **45.4453, 47.8120, 52.0672**.

A 20% lighter version of the original color is **84.9444, 85.3640, 88.3438**, and **22.6998, 21.9815, 22.1152** is the 20% darker color. If you saturate the color by 10%, you get **42.0202, 39.0793, 36.7813**, and if you desaturate by 10%, it is **53.5615, 55.8210, 60.1768**.

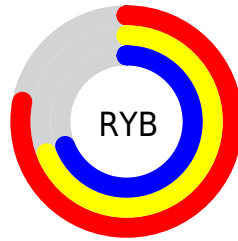
Distribution



Red (78%)

Green (69%)

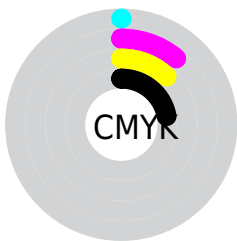
Blue (69%)



Red (78%)

Yellow (69%)

Blue (69%)

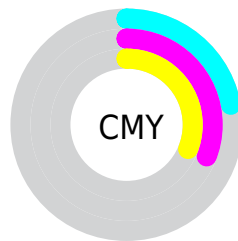


Cyan (0%)

Magenta (11%)

Yellow (12%)

Black (22%)



Cyan (22%)


Magenta (31%)


Yellow (31%)

Brightness & Saturation Gradients


These gradients show how the XYZ color 47.3780, 46.8582, 47.6217 changes by changing the brightness by 10 percent. The first figure shows a shift by +10% for each color and the second figure -10%.


Similar to the brightness gradients but the following saturation gradients show a change of the XYZ color 47.3780, 46.8582, 47.6217 by changing the saturation by 10% instead.


 47.3780, 46.8582,
47.6217

 47.3780, 46.8582,
47.6217


366.9451,
374.2482, 393.7560

 33.5438, 32.9236,
33.1695

 85.4929, 85.5019,
88.0006

 22.7046, 22.0679,
21.9842

110.5043,
110.9798, 114.7643

 14.4950, 13.9068,
13.6471

139.9721,
141.0742, 146.4691

 8.5497, 8.0559,
7.7397

174.2617,
176.1696, 183.5333

 4.5034, 4.1307,
3.8434

213.7384,
216.6503, 226.3756

 1.9907, 1.7470,
1.5399

258.7677,

 0.6287, 0.4538,

262.9007, 275.4144

0.2474

309.7148,
315.3052, 331.0684

■ 0.0000, 0.0000,
0.0000

■ 47.3780, 46.8582,
47.6217

■ 47.3780, 46.8582,
47.6217

■ 42.0202, 39.0793,
36.7813

■ 53.5615, 55.8210,
60.1768

■ 37.4496, 32.4290,
27.5786

■ 60.5996, 66.0077,
74.5135

■ 33.6302, 26.8567,
19.9346

■ 68.5244, 77.4641,
90.6984

■ 30.5218, 22.3056,
13.7633

■ 77.2035, 90.1673,
107.9427

■ 28.0804, 18.7139,
8.9698

■ 77.6296, 91.0195,
108.0847

■ 26.2573, 16.0127,
5.4483

■ 24.9968, 14.1243,
3.0779

■ 24.2335, 12.9576,
1.7141

■ 23.9104, 12.4610,
1.1450

Harmonies

Analogous

The Analogous color harmony consists of three colors that are next to each other on the color wheel.



47.6226, 46.8582, 51.9996



47.3780, 46.8582, 47.6217



46.3642, 46.8582, 44.3398

Triad

The Triadic color harmony groups three colors that are evenly spaced from another and form a triangle on the color wheel.



47.3780, 46.8582, 47.6217



42.1390, 46.8582, 46.0306



44.1985, 46.8582, 60.1570

Complementary

The Complementary color scheme is a pair of colors which are on the opposite of each other on the color wheel.



47.3780, 46.8582, 47.6217



48.7530, 54.2460, 62.5450

Split Complementary

Split-complementary colors differ from the complementary color scheme. The scheme consists of three colors, the original color and two neighbors of the complement color.



42.7590, 46.8582, 58.3409



47.3780, 46.8582, 47.6217



41.5882, 46.8582, 50.0540

Square

The Square scheme is like the rectangle color scheme, but the four colors are evenly spaced on the color wheel.



47.3780, 46.8582, 47.6217



43.3341, 46.8582, 43.4598



41.8125, 46.8582, 54.5775



45.7626, 46.8582, 59.4111

Rectangle

The Rectangle color scheme consists of four colors that form a rectangle on the color wheel.



47.3780, 46.8582, 47.6217



45.4012, 46.8582, 43.1274



41.8125, 46.8582, 54.5775



43.6845, 46.8582, 59.8226

Sweetspot

The Sweet Spot groups the original color and five complimentary colors.



47.3793, 46.8603, 47.6227



90.4119, 93.2823, 99.4663



49.6773, 47.4635, 60.6982



19.1710, 19.7042, 20.9222



0.0000, 0.0000, 0.0000



20.3446, 21.4041, 23.3091

Same Dimension

The Same Dimension uses a secret algorithm to generate beautiful new colors.



47.3793, 46.8603, 47.6227



79.8675, 77.9939, 78.0699



49.8110, 51.7237, 48.4333



10.6688, 10.7068, 11.0671



15.2193, 7.9558, 0.7335



0.7333, 0.4021, 0.0390

Inverse Universe

The Inverse Universe completely reimagines the original color for something new.



48.7530, 54.2460, 62.5450



82.6394, 92.8978, 108.1833



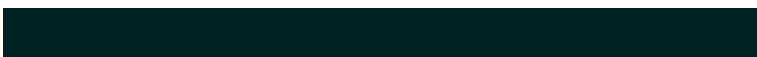
46.1432, 49.0264, 61.6751



10.9072, 11.9886, 13.6566



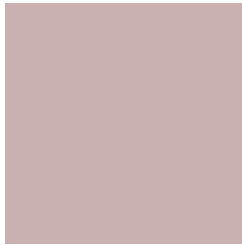
18.5804, 26.5546, 38.8906



0.8918, 1.2815, 1.8455

Previews

White Background



This preview shows how the XYZ color 47.3780, 46.8582, 47.6217 looks on a white background.

Color Contrast Check

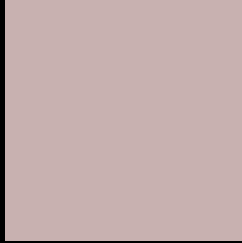
Large Text (above 18pt) WCAG AA × Fail

Any Text WCAG AA × Fail

Large Text (above 18pt) WCAG AAA × Fail

Any Text WCAG AAA × Fail

Black Background



This preview shows how the XYZ color 47.3780, 46.8582, 47.6217 looks on a black background.

Color Contrast Check

Large Text (above 18pt) WCAG AA ✓ Pass

Any Text WCAG AA ✓ Pass

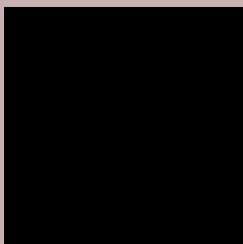
Large Text (above 18pt) WCAG AAA ✓ Pass

Any Text WCAG AAA ✓ Pass

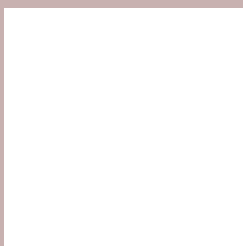
If you want to check with other color combinations, try the [Color Contrast Checker](#).

XYZ 47.3780, 46.8582, 47.6217

Background



This preview shows how black text looks on a background with the XYZ color 47.3780, 46.8582, 47.6217.



This preview shows how white text looks on a background with the XYZ color 47.3780, 46.8582,

Color Blindness Simulation

Color vision deficiency is a very complex topic, and I could not describe the different causes any better than Wikipedia does, so if you want to learn more, you should check out their [article about color blindness](#).

Dichromacy



Original Color

47.3780, 46.8582, 47.6217

Protanopia

44.8095, 46.7012, 48.7720

Deuteranopia

47.7189, 46.7418, 47.5813



Tritanopia

48.8724, 46.8906, 54.6191

Trichromacy



Original Color

47.3780, 46.8582, 47.6217

Protanomaly

45.7429, 46.8932, 48.2354

Deuteranomaly

47.4492, 46.6028, 47.5687

Tritanomaly

48.2645, 46.9289, 51.8618

Monochromacy



Original Color

47.3780, 46.8582, 47.6217

Achromatopsia

45.5594, 47.9320, 52.1980

Achromatomaly

46.0996, 47.3311, 50.4222

CSS Examples

Text

The CSS property to change the color of the text to XYZ 47.3780, 46.8582, 47.6217 is called "color". The color property can be set on classes, ids or directly on the HTML element.

This example shows how text in the color rgb(200, 177, 176) looks like.

```
.text, #text, p{  
    color:rgb(200, 177, 176)  
}
```

If you want to add a text shadow in that color use the text-shadow property, you can generate a text shadow directly with our [CSS Text Shadow Generator](#).

Here you see how black text with a 4 pixel rgb(200, 177, 176) colored shadow looks like.

```
.shadow{ text-shadow: 4px 4px 2px rgb(200, 177, 176) }
```

Border

The CSS property to change the border of an element to XYZ 47.3780, 46.8582, 47.6217 is called "border". The border property can be set on classes, ids or directly on the HTML element.

This example shows the color as border, it can be applied via the CSS property "border" or "border-color".

```
.border, #border, table{ border:4px solid rgb(200, 177, 176) }
```


If only the border color should be changed use the property border-color.

```
.border{ border-color:rgb(200, 177, 176) }
```

If you want to add a box shadow in that color use:

Here you see how a box with a 4 pixel rgb(200, 177, 176) colored shadow looks like.

```
.boxshadow{ -moz-box-shadow:4px 4px 4px  
4px rgb(200, 177, 176); -webkit-box-  
shadow:4px 4px 4px 4px rgb(200, 177, 176);  
box-shadow:4px 4px 4px 4px rgb(200, 177,  
176) }
```

Background

The CSS property to change the background color of an element to XYZ 47.3780, 46.8582, 47.6217 is called "background". The background property can be set on classes, ids or directly on the HTML element.

```
.background, #background, body{  
background: rgb(200, 177, 176) }
```

If only the background color should be changed can be used:

```
.background{ background-color: rgb(200,  
177, 176) }
```

This example shows the color as background, it is applied via the CSS property "background".

To optimize and compress your CSS code, you can use our [online CSS compressor and optimizer](#) based on csstidy. If you want to create a linear or radial gradient as background or border, check our [CSS Gradient Generator](#).

Hey! You found this booklet interesting? Support Converting Colors with the new Membership Option!

The pro membership hides all ads, plus gives you double the colors in the color bucket, and more awesome pro features!

[Learn more, Memberships starting at \\$2.50/m!](#)

**Follow me
on Twitter!**

@ConvertingColor