

# Converting Colors

XYZ(47.2505, 45.9247, 44.4048)

Have a look what the booklet for  
XYZ(47.2505, 45.9247, 44.4048)  
contains.

<b>XYZ(47.2936, 46.0118, 44.4187)</b> .....	3
<b><i>Conversions</i></b> .....	4
<b><i>Details</i></b> .....	6
<b><i>Harmonies</i></b> .....	12
<b><i>Previews</i></b> .....	24
<b><i>Color Blindness Simulation</i></b> .....	28
<b><i>CSS Examples</i></b> .....	31

# Color

**XYZ(47.2936, 46.0118,  
44.4187)**

# Conversions

## Conversions Part 1

Format	Color
Hex	CCAEEA
RGB	204, 174, 170
RGB Percent	80%, 68%, 67%
CMY	0.2000, 0.3176, 0.3333
CMYK	0.00, 0.15, 0.17, 0.20
HSL	7°, 25%, 73%
HSV	7°, 17%, 80%
XYZ	47.2936, 46.0118, 44.4187
YIQ	182.5140, 19.1640, 5.1160

# Conversions

## Conversions Part 2

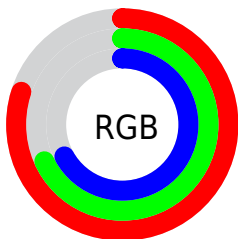
Format	Color
R <sub>Y</sub> B	204, 175, 170
Decimal	13414058
CIE Lab	73.55, 10.20, 6.07
CIE LCh	74, 11.874, 30.751
Yxy	46.0118, 0.3434, 0.3341
Android (android.graphics.Color)	4291604138 (0xFFCCAEEA)
YUV	182.5140, -6.1694, 18.8432
Hunter-Lab	67.8320, 5.7472, 8.6573

# Details

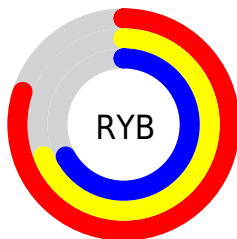
The XYZ color **47.2936, 46.0118, 44.4187** is a light color, and the websafe version is hex **CC9999**. A complement of this color would be **48.1305, 54.2129, 65.0545**, and the grayscale version is **44.7701, 47.1017, 51.2937**.

A 20% lighter version of the original color is **83.1274, 83.2899, 82.9294**, and **22.6240, 21.6166, 20.1196** is the 20% darker color. If you saturate the color by 10%, you get **42.2647, 38.8061, 33.9488**, and if you desaturate by 10%, it is **53.0905, 54.2732, 56.6231**.

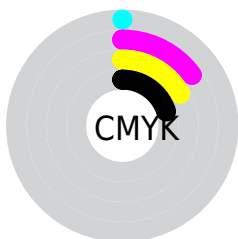
# Distribution



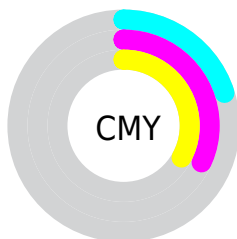
- Red (80%)
- Green (68%)
- Blue (67%)



- Red (80%)
- Yellow (69%)
- Blue (67%)



- Cyan (0%)
- Magenta (15%)
- Yellow (17%)
- Black (20%)




- Cyan (20%)
- Magenta (32%)
- Yellow (33%)


# Brightness & Saturation Gradients

These gradients show how the XYZ color 47.2936, 46.0118, 44.4187 changes by changing the brightness by 10 percent. The first figure shows a shift by +10% for each color and the second figure -10%.


Similar to the brightness gradients but the following saturation gradients show a change of the XYZ color 47.2936, 46.0118, 44.4187 by changing the saturation by 10% instead.





 47.2936, 46.0118,  
44.4187

 47.2936, 46.0118,  
44.4187

366.6146,  
370.8561, 380.5054

 33.4767, 32.2551,  
30.6602

 85.3678, 84.2367,  
83.1566

 22.6529, 21.5564,  
20.0839


110.3558,  
109.4736, 108.9731

 14.4567, 13.5314,  
12.2714

139.7983,  
139.3062, 139.6460

 8.5228, 7.7954,  
6.8040

174.0606,  
174.1187, 175.5938

 4.4859, 3.9643,  
3.2633

213.5080,  
214.2955, 217.2351

 1.9805, 1.6536,  
1.2306

258.5059,

 0.6230, 0.3934,

260.2211, 264.9885

0.0039

309.4196,  
312.2798, 319.2724

■ 0.0000, 0.0000,  
0.0000

■ 47.2936, 46.0118,  
44.4187

■ 47.2936, 46.0118,  
44.4187

■ 42.2647, 38.8061,  
33.9488

■ 53.0905, 54.2732,  
56.6231

■ 37.9677, 32.6076,  
25.1318

■ 59.6817, 63.6241,  
70.6326

■ 34.3696, 27.3732,  
17.8840

■ 67.0972, 74.1041,  
86.5177

■ 31.4329, 23.0543,  
12.1131

■ 75.3641, 85.7494,  
104.3439

■ 29.1171, 19.5981,  
7.7172

■ 78.7120, 91.5775,  
108.1354

■ 27.3766, 16.9462,  
4.5814

■ 26.1600, 15.0332,  
2.5720

■ 25.4041, 13.7821,  
1.5166

■ 25.2291, 13.4917,  
1.2744

# Harmonies

## Analogous

The Analogous color harmony consists of three colors that are next to each other on the color wheel.



47.8936, 46.0118, 49.9477



47.2936, 46.0118, 44.4187



45.7345, 46.0118, 40.6762

# Triad

The Triadic color harmony groups three colors that are evenly spaced from another and form a triangle on the color wheel.



47.2936, 46.0118, 44.4187



40.3053, 46.0118, 44.6613



43.7857, 46.0118, 62.5674

# Complementary

The Complementary color scheme is a pair of colors which are on the opposite of each other on the color wheel.



47.2936, 46.0118, 44.4187



48.1305, 54.2129, 65.0545

# Split Complementary

Split-complementary colors differ from the complementary color scheme. The scheme consists of three colors, the original color and two neighbors of the complement color.



41.7905, 46.0118, 60.8751



47.2936, 46.0118, 44.4187



39.8203, 46.0118, 50.2507

# Square

The Square scheme is like the rectangle color scheme, but the four colors are evenly spaced on the color wheel.



47.2936, 46.0118, 44.4187



41.7016, 46.0118, 40.8081



40.3554, 46.0118, 56.2441



45.8289, 46.0118, 60.7028



# Rectangle

The Rectangle color scheme consists of four colors that form a rectangle on the color wheel.



47.2936, 46.0118, 44.4187



44.3847, 46.0118, 39.5353



40.3554, 46.0118, 56.2441



43.0874, 46.0118, 62.3945

# Sweetspot

The Sweet Spot groups the original color and five complimentary colors.



47.2949, 46.0139, 44.4197



89.5806, 92.2378, 97.2837



49.7063, 45.7591, 60.8770



19.0153, 19.5172, 20.4866



0.0000, 0.0000, 0.0000



20.3446, 21.4041, 23.3091



# Same Dimension

The Same Dimension uses a secret algorithm to generate beautiful new colors.



47.2949, 46.0139, 44.4197



75.1872, 71.7158, 67.0065



50.7815, 52.9872, 45.5819



11.3170, 11.4229, 11.6878



15.9153, 8.5635, 0.8141



0.8575, 0.5146, 0.0541

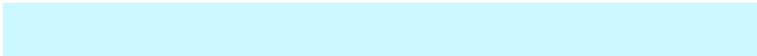


# Inverse Universe

The Inverse Universe completely reimagines the original color for something new.



48.1305, 54.2129, 65.0545



76.8257, 87.8050, 107.5067



44.4175, 46.7870, 63.8169



11.4261, 12.4927, 14.3795



17.1745, 23.3729, 39.5625

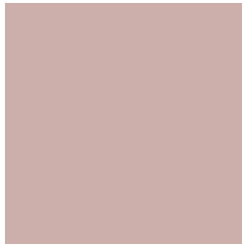


0.9187, 1.2711, 2.0519



# Previews

## White Background



This preview shows how the XYZ color 47.2936, 46.0118, 44.4187 looks on a white background.

## Color Contrast Check

Large Text (above 18pt) WCAG AA × Fail

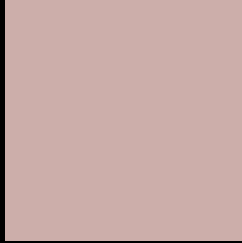
Any Text WCAG AA × Fail

Large Text (above 18pt) WCAG AAA × Fail

Any Text WCAG AAA × Fail



# Black Background



This preview shows how the XYZ color 47.2936, 46.0118, 44.4187 looks on a black background.

## Color Contrast Check

Large Text (above 18pt) WCAG AA ✓ Pass

Any Text WCAG AA ✓ Pass

Large Text (above 18pt) WCAG AAA ✓ Pass

Any Text WCAG AAA ✓ Pass

If you want to check with other color combinations, try the [Color Contrast Checker](#).

**XYZ 47.2936, 46.0118, 44.4187**

## **Background**



This preview shows how black text looks on a background with the XYZ color 47.2936, 46.0118, 44.4187.



This preview shows how white text looks on a background with the XYZ color 47.2936, 46.0118,



# Color Blindness Simulation

Color vision deficiency is a very complex topic, and I could not describe the different causes any better than Wikipedia does, so if you want to learn more, you should check out their [article about color blindness](#).

## Dichromacy



### Original Color

47.2936, 46.0118, 44.4187

### Protanopia

44.1138, 46.0987, 46.1081

### Deuteranopia

46.9428, 46.1188, 44.4579



## Tritanopia

48.9631, 46.1296, 52.2222

# Trichromacy



## Original Color

47.2936, 46.0118, 44.4187

## Protanomaly

45.3591, 46.1568, 45.5482

## Deuteranomaly

47.2143, 46.2587, 44.4706

## Tritanomaly

48.3586, 46.1616, 49.5413

# Monochromacy



## Original Color

47.2936, 46.0118, 44.4187

## Achromatopsia

45.0092, 47.3531, 51.5676

## Achromatomaly

45.8430, 46.9332, 48.7623

# CSS Examples

## Text

The CSS property to change the color of the text to XYZ 47.2936, 46.0118, 44.4187 is called "color". The color property can be set on classes, ids or directly on the HTML element.

This example shows how text in the color `rgb(204, 174, 170)` looks like.

```
.text, #text, p{  
    color:rgb(204, 174, 170)  
}
```

If you want to add a text shadow in that color use the text-shadow property, you can generate a text shadow directly with our [CSS Text Shadow Generator](#).

Here you see how black text with a 4 pixel rgb(204, 174, 170) colored shadow looks like.

```
.shadow{ text-shadow: 4px 4px 2px rgb(204, 174, 170) }
```

## Border

The CSS property to change the border of an element to XYZ 47.2936, 46.0118, 44.4187 is called "border". The border property can be set on classes, ids or directly on the HTML element.

This example shows the color as border, it can be applied via the CSS property "border" or "border-color".

```
.border, #border, table{ border:4px solid rgb(204, 174, 170) }
```



If only the border color should be changed use the property `border-color`.

```
.border{ border-color:rgb(204, 174, 170) }
```

If you want to add a box shadow in that color use:

Here you see how a box with a 4 pixel `rgb(204, 174, 170)` colored shadow looks like.

```
.boxshadow{ -moz-box-shadow:4px 4px 4px  
4px rgb(204, 174, 170); -webkit-box-  
shadow:4px 4px 4px 4px rgb(204, 174, 170);  
box-shadow:4px 4px 4px 4px rgb(204, 174,  
170) }
```

# Background

The CSS property to change the background color of an element to XYZ 47.2936, 46.0118, 44.4187 is called "background". The background property can be set on classes, ids or directly on the HTML element.

```
.background, #background, body{  
background: rgb(204, 174, 170) }
```

If only the background color should be changed can be used:

```
.background{ background-color: rgb(204,  
174, 170) }
```

This example shows the color as background, it is applied via the CSS property "background".

To optimize and compress your CSS code, you can use our [online CSS compressor and optimizer](#) based on csstidy. If you want to create a linear or radial gradient as background or border, check our [CSS Gradient Generator](#).

Hey! You found this booklet interesting? Support Converting Colors with the new Membership Option!

The pro membership hides all ads, plus gives you double the colors in the color bucket, and more awesome pro features!

**[Learn more, Memberships starting at \\$2.50/m!](#)**

**Follow me  
on Twitter!**

@ConvertingColor