

Converting Colors

XYZ(47.3537, 47.5667, 55.4007)

Have a look what the booklet for
XYZ(47.3537, 47.5667, 55.4007)
contains.

XYZ(47.3537, 47.5667, 55.4007)	3
<i>Conversions</i>	4
<i>Details</i>	6
<i>Harmonies</i>	12
<i>Previews</i>	24
<i>Color Blindness Simulation</i>	28
<i>CSS Examples</i>	31

Color

**XYZ(47.3537, 47.5667,
55.4007)**

Conversions

Conversions Part 1

Format	Color
Hex	C0B4BE
RGB	192, 180, 190
RGB Percent	75%, 71%, 75%
CMY	0.2471, 0.2941, 0.2549
CMYK	0.00, 0.06, 0.01, 0.25
HSL	310°, 9%, 73%
HSV	310°, 6%, 75%
XYZ	47.3537, 47.5667, 55.4007
YIQ	184.7280, 3.9420, 5.6540

Conversions

Conversions Part 2

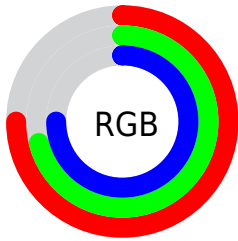
Format	Color
R_{YB}	192, 180, 190
Decimal	12629182
CIE Lab	74.55, 6.07, -3.54
CIE LCh	75, 7.031, 329.723
Yxy	47.5667, 0.3150, 0.3164
Android (android.graphics.Color)	4290819262 (0xFFC0B4BE)
YUV	184.7280, 2.5991, 6.3775
Hunter-Lab	68.9686, 1.8626, 0.6519

Details

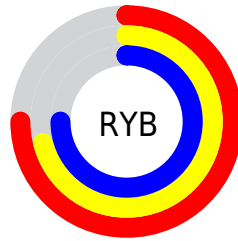
The XYZ color **47.3537, 47.5667, 55.4007** is a light color, and the websafe version is hex **CCCCCC**. A complement of this color would be **46.1173, 50.7811, 51.6294**, and the grayscale version is **45.9486, 48.3415, 52.6439**.

A 20% lighter version of the original color is **85.3414, 86.6012, 99.4065**, and **22.7522, 22.4739, 26.8056** is the 20% darker color. If you saturate the color by 10%, you get **43.3975, 40.2074, 52.3755**, and if you desaturate by 10%, it is **51.8572, 56.0070, 58.6474**.

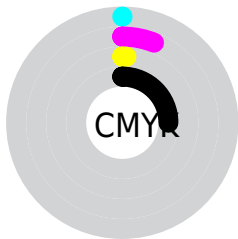
Distribution



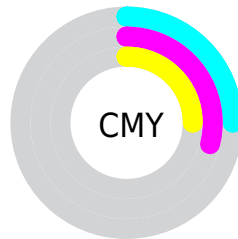
- Red (75%)
- Green (71%)
- Blue (75%)



- Red (75%)
- Yellow (71%)
- Blue (75%)



- Cyan (0%)
- Magenta (6%)
- Yellow (1%)
- Black (25%)



- Cyan (25%)
- Magenta (29%)
- Yellow (25%)

Brightness & Saturation Gradients

These gradients show how the XYZ color 47.3537, 47.5667, 55.4007 changes by changing the brightness by 10 percent. The first figure shows a shift by +10% for each color and the second figure -10%.

Similar to the brightness gradients but the following saturation gradients show a change of the XYZ color 47.3537, 47.5667, 55.4007 by changing the saturation by 10% instead.

■ 47.3537, 47.5667,
55.4007

■ 47.3537, 47.5667,
55.4007

366.8500,
377.0720, 424.7537

■ 33.5245, 33.4839,
39.3219

■ 85.4569, 86.5589,
99.6048

■ 22.6897, 22.4974,
26.7005

110.4615,
112.2371, 128.5672

■ 14.4840, 14.2228,
17.1179

139.9221,
142.5492, 162.6612

■ 8.5420, 8.2758,
10.1558

174.2038,
177.8796, 202.3052

■ 4.4984, 4.2719,
5.3954

213.6721,
218.6127, 247.9180

■ 1.9878, 1.8268,
2.4183

258.6923,

■ 0.6271, 0.5038,

265.1328, 299.9180

0.7964

309.6298,
317.8245, 358.7237

■ 0.0000, 0.0000,
0.0000

■ 47.3537, 47.5667,
55.4007

■ 47.3537, 47.5667,
55.4007

■ 43.3975, 40.2074,
52.3755

■ 51.8572, 56.0070,
58.6474

■ 39.9626, 33.8791,
49.5611

■ 56.9246, 65.5635,
62.1197

■ 37.0268, 28.5368,
46.9505

■ 62.5770, 76.2774,
65.8253

■ 34.5648, 24.1301,
44.5351

■ 68.2545, 87.0290,
69.5779

■ 32.5490, 20.6038,
42.3053

■ 68.6395, 87.1830,
71.6051

■ 30.9490, 17.8973,
40.2508

■ 69.0324, 87.3402,
73.6741

■ 29.7305, 15.9420,
38.3599

■ 69.4332, 87.5005,
75.7850

■ 28.8537, 14.6581,
36.6190

■ 69.8421, 87.6640,
77.9381

■ 28.2671, 13.9431,
35.0108

■ 70.2590, 87.8308,
80.1336

Harmonies

Analogous

The Analogous color harmony consists of three colors that are next to each other on the color wheel.



46.4329, 47.5667, 58.1095



47.3537, 47.5667, 55.4007



47.6982, 47.5667, 51.8259

Triad

The Triadic color harmony groups three colors that are evenly spaced from another and form a triangle on the color wheel.



47.3537, 47.5667, 55.4007



45.2225, 47.5667, 45.1052



43.1219, 47.5667, 55.3394

Complementary

The Complementary color scheme is a pair of colors which are on the opposite of each other on the color wheel.



47.3537, 47.5667, 55.4007



46.1173, 50.7811, 51.6294

Split Complementary

Split-complementary colors differ from the complementary color scheme. The scheme consists of three colors, the original color and two neighbors of the complement color.



42.8112, 47.5667, 51.7582



47.3537, 47.5667, 55.4007



44.0101, 47.5667, 45.9499

Square

The Square scheme is like the rectangle color scheme, but the four colors are evenly spaced on the color wheel.



47.3537, 47.5667, 55.4007



46.4538, 47.5667, 45.9812



43.1334, 47.5667, 48.3436



43.9900, 47.5667, 58.0729

Rectangle

The Rectangle color scheme consists of four colors that form a rectangle on the color wheel.



47.3537, 47.5667, 55.4007



47.5499, 47.5667, 49.4664



43.1334, 47.5667, 48.3436



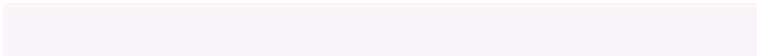
42.9496, 47.5667, 54.1895

Sweetspot

The Sweet Spot groups the original color and five complimentary colors.



47.3551, 47.5688, 55.4017



89.1206, 92.3948, 102.8141



45.1291, 46.3958, 56.4464



19.1371, 19.8551, 22.0699



92.9021, 97.7402, 106.4391



19.4759, 20.4902, 22.3138

Same Dimension

The Same Dimension uses a secret algorithm to generate beautiful new colors.



47.3551, 47.5688, 55.4017



85.1459, 84.9626, 99.8946



46.7128, 47.3118, 52.0194



10.5971, 10.5426, 12.4483



18.9216, 9.2584, 23.2970



0.8371, 0.4079, 1.1098

Inverse Universe

The Inverse Universe completely reimagines the original color for something new.



47.3551, 47.5688, 55.4017



85.1459, 84.9626, 99.8946



46.7507, 51.0345, 54.9648



10.5971, 10.5426, 12.4483



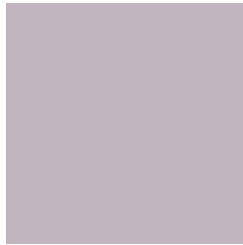
18.9216, 9.2584, 23.2970



0.8371, 0.4079, 1.1098

Previews

White Background



This preview shows how the XYZ color 47.3537, 47.5667, 55.4007 looks on a white background.

Color Contrast Check

Large Text (above 18pt) WCAG AA × Fail

Any Text WCAG AA × Fail

Large Text (above 18pt) WCAG AAA × Fail

Any Text WCAG AAA × Fail

Black Background



This preview shows how the XYZ color 47.3537, 47.5667, 55.4007 looks on a black background.

Color Contrast Check

Large Text (above 18pt) WCAG AA ✓ Pass

Any Text WCAG AA ✓ Pass

Large Text (above 18pt) WCAG AAA ✓ Pass

Any Text WCAG AAA ✓ Pass

If you want to check with other color combinations, try the [Color Contrast Checker](#).

XYZ 47.3537, 47.5667, 55.4007

Background



This preview shows how black text looks on a background with the XYZ color 47.3537, 47.5667, 55.4007.



This preview shows how white text looks on a background with the XYZ color 47.3537, 47.5667,

Color Blindness Simulation

Color vision deficiency is a very complex topic, and I could not describe the different causes any better than Wikipedia does, so if you want to learn more, you should check out their [article about color blindness](#).

Dichromacy



Original Color

47.3537, 47.5667, 55.4007

Protanopia

45.8991, 47.4078, 56.0217

Deuteranopia

48.5034, 47.5643, 55.3396



Tritanopia

47.8500, 47.4727, 57.6801

Trichromacy



Original Color

47.3537, 47.5667, 55.4007

Protanomaly

46.4214, 47.3741, 55.9877

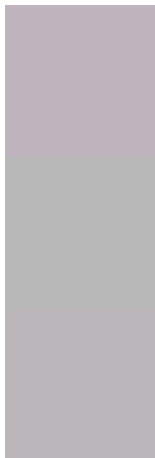
Deuteranomaly

48.1793, 47.6937, 55.3817

Tritanomaly

47.7381, 47.4279, 57.0905

Monochromacy



Original Color

47.3537, 47.5667, 55.4007

Achromatopsia

46.1135, 48.5150, 52.8328

Achromatomaly

46.6422, 48.1462, 53.8485

CSS Examples

Text

The CSS property to change the color of the text to XYZ 47.3537, 47.5667, 55.4007 is called "color". The color property can be set on classes, ids or directly on the HTML element.

This example shows how text in the color `rgb(192, 180, 190)` looks like.

```
.text, #text, p{  
    color:rgb(192, 180, 190)  
}
```

If you want to add a text shadow in that color use the text-shadow property, you can generate a text shadow directly with our [CSS Text Shadow Generator](#).

Here you see how black text with a 4 pixel rgb(192, 180, 190) colored shadow looks like.

```
.shadow{ text-shadow: 4px 4px 2px rgb(192, 180, 190) }
```

Border

The CSS property to change the border of an element to XYZ 47.3537, 47.5667, 55.4007 is called "border". The border property can be set on classes, ids or directly on the HTML element.

This example shows the color as border, it can be applied via the CSS property "border" or "border-color".

```
.border, #border, table{ border:4px solid rgb(192, 180, 190) }
```


If only the border color should be changed use the property `border-color`.

```
.border{ border-color:rgb(192, 180, 190) }
```

If you want to add a box shadow in that color use:

Here you see how a box with a 4 pixel `rgb(192, 180, 190)` colored shadow looks like.

```
.boxshadow{ -moz-box-shadow:4px 4px 4px  
4px rgb(192, 180, 190); -webkit-box-  
shadow:4px 4px 4px 4px rgb(192, 180, 190);  
box-shadow:4px 4px 4px 4px rgb(192, 180,  
190) }
```

Background

The CSS property to change the background color of an element to XYZ 47.3537, 47.5667, 55.4007 is called "background". The background property can be set on classes, ids or directly on the HTML element.

```
.background, #background, body{  
background: rgb(192, 180, 190) }
```

If only the background color should be changed can be used:

```
.background{ background-color: rgb(192,  
180, 190) }
```

This example shows the color as background, it is applied via the CSS property "background".

To optimize and compress your CSS code, you can use our [online CSS compressor and optimizer](#) based on csstidy. If you want to create a linear or radial gradient as background or border, check our [CSS Gradient Generator](#).

Hey! You found this booklet interesting? Support Converting Colors with the new Membership Option!

The pro membership hides all ads, plus gives you double the colors in the color bucket, and more awesome pro features!

[Learn more, Memberships starting at \\$2.50/m!](#)

**Follow me
on Twitter!**

@ConvertingColor