

Converting Colors

XYZ(47.3849, 45.9650, 46.9498)

Have a look what the booklet for
XYZ(47.3849, 45.9650, 46.9498)
contains.

XYZ(47.5025, 46.0638, 46.9450)	3
<i>Conversions</i>	4
<i>Details</i>	6
<i>Harmonies</i>	12
<i>Previews</i>	24
<i>Color Blindness Simulation</i>	28
<i>CSS Examples</i>	31

Color

**XYZ(47.5025, 46.0638,
46.9450)**

Conversions

Conversions Part 1

Format	Color
Hex	CBAEAF
RGB	203, 174, 175
RGB Percent	80%, 68%, 69%
CMY	0.2039, 0.3176, 0.3137
CMYK	0.00, 0.14, 0.14, 0.20
HSL	358°, 22%, 74%
HSV	358°, 14%, 80%
XYZ	47.5025, 46.0638, 46.9450
YIQ	182.7850, 16.9630, 6.4590

Conversions

Conversions Part 2

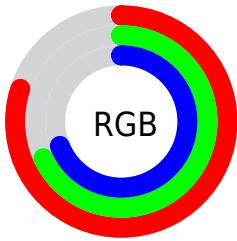
Format	Color
RYB	203, 174, 175
Decimal	13348527
CIELab	73.59, 10.64, 3.37
CIELCh	74, 11.162, 17.567
Yxy	46.0638, 0.3381, 0.3278
Android (android.graphics.Color)	4291538607 (0xFFCBAEAF)
YUV	182.7850, -3.8380, 17.7286
Hunter-Lab	67.8703, 6.1593, 6.4991

Details

The XYZ color **47.5025, 46.0638, 46.9450** is a light color, and the websafe version is hex **CC9999**. A complement of this color would be **49.4740, 55.9759, 64.0767**, and the grayscale version is **44.9069, 47.2455, 51.4504**.

A 20% lighter version of the original color is **83.8197, 83.5668, 86.5751**, and **22.9291, 21.7387, 21.7264** is the 20% darker color. If you saturate the color by 10%, you get **42.0857, 38.0905, 36.3202**, and if you desaturate by 10%, it is **53.7941, 55.3384, 59.2414**.

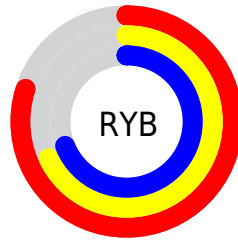
Distribution



Red (80%)

Green (68%)

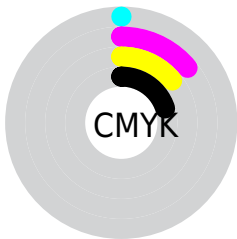
Blue (69%)



Red (80%)

Yellow (68%)

Blue (69%)

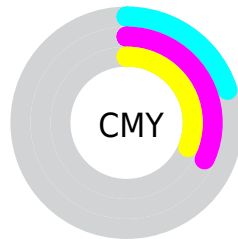


Cyan (0%)

Magenta (14%)

Yellow (14%)

Black (20%)



Cyan (20%)

Magenta (32%)

Yellow (31%)

Brightness & Saturation Gradients

These gradients show how the XYZ color 47.5025, 46.0638, 46.9450 changes by changing the brightness by 10 percent. The first figure shows a shift by +10% for each color and the second figure -10%.

Similar to the brightness gradients but the following saturation gradients show a change of the XYZ color 47.5025, 46.0638, 46.9450 by changing the saturation by 10% instead.

■ 47.5025, 46.0638,
46.9450

■ 47.5025, 46.0638,
46.9450

367.4322,
371.0651, 390.9824

■ 33.6427, 32.2962,
32.6381

■ 85.6774, 84.3145,
86.9806

■ 22.7808, 21.5878,
21.5805

110.7232,
109.5663, 113.5465

■ 14.5516, 13.5544,
13.3537

140.2284,
139.4150, 145.0358

■ 8.5895, 7.8114,
7.5389

174.5583,
174.2449, 181.8670

■ 4.5294, 3.9745,
3.7179

214.0782,
214.4405, 224.4588

■ 2.0058, 1.6593,
1.4719

259.1537,

■ 0.6372, 0.3971,

260.3861, 273.2295

0.1968

310.1499,
312.4662, 328.5979

■ 0.0000, 0.0000,
0.0000

■ 47.5025, 46.0638,
46.9450

■ 47.5025, 46.0638,
46.9450

■ 42.0857, 38.0905,
36.3202

■ 53.7941, 55.3384,
59.2414

■ 37.5013, 31.3545,
27.2921

■ 60.9928, 65.9622,
73.2740

■ 33.7092, 25.7957,
19.7844

■ 69.1338, 77.9886,
89.1078

■ 30.6646, 21.3465,
13.7136

■ 78.1841, 91.3347,
106.7814

■ 28.3180, 17.9325,
8.9878

■ 78.4388, 91.4366,
108.1226

■ 26.6141, 15.4702,
5.5048

■ 25.4891, 13.8630,
3.1478

■ 24.8661, 12.9943,
1.7776

■ 24.6670, 12.7119,
1.3538

Harmonies

Analogous

The Analogous color harmony consists of three colors that are next to each other on the color wheel.



47.5955, 46.0638, 52.5333



47.5025, 46.0638, 46.9450



46.3943, 46.0638, 42.5509

Triad

The Triadic color harmony groups three colors that are evenly spaced from another and form a triangle on the color wheel.



47.5025, 46.0638, 46.9450



41.0395, 46.0638, 43.1710



42.9699, 46.0638, 61.5408

Complementary

The Complementary color scheme is a pair of colors which are on the opposite of each other on the color wheel.



47.5025, 46.0638, 46.9450



49.4740, 55.9759, 64.0767

Split Complementary

Split-complementary colors differ from the complementary color scheme. The scheme consists of three colors, the original color and two neighbors of the complement color.



41.2702, 46.0638, 58.6164



47.5025, 46.0638, 46.9450



40.1783, 46.0638, 47.8508

Square

The Square scheme is like the rectangle color scheme, but the four colors are evenly spaced on the color wheel.



47.5025, 46.0638, 46.9450



42.6464, 46.0638, 40.4872



40.2615, 46.0638, 53.5094



44.9382, 46.0638, 61.2524

Rectangle

The Rectangle color scheme consists of four colors that form a rectangle on the color wheel.



47.5025, 46.0638, 46.9450



45.2471, 46.0638, 40.7616



40.2615, 46.0638, 53.5094



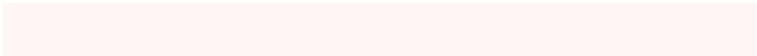
42.3494, 46.0638, 60.8923

Sweetspot

The Sweet Spot groups the original color and five complimentary colors.



47.5038, 46.0659, 46.9460



90.3363, 93.0456, 99.7050



50.1523, 47.0799, 62.9443



19.1520, 19.6446, 20.9823



0.0000, 0.0000, 0.0000



20.3446, 21.4041, 23.3091

Same Dimension

The Same Dimension uses a secret algorithm to generate beautiful new colors.



47.5038, 46.0659, 46.9460



76.7240, 72.9833, 73.0870



50.0508, 51.3159, 47.3140



11.2277, 11.2198, 11.7336



15.7047, 8.0925, 0.8978



0.8158, 0.4197, 0.0758

Inverse Universe

The Inverse Universe completely reimagines the original color for something new.



47.5038, 46.0659, 46.9460



76.7240, 72.9833, 73.0870



46.6394, 50.1175, 63.7157



11.2277, 11.2198, 11.7336



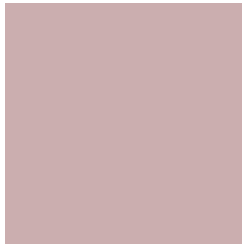
15.7047, 8.0925, 0.8978



0.8158, 0.4197, 0.0758

Previews

White Background



This preview shows how the XYZ color 47.5025, 46.0638, 46.9450 looks on a white background.

Color Contrast Check

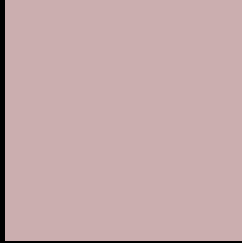
Large Text (above 18pt) WCAG AA × Fail

Any Text WCAG AA × Fail

Large Text (above 18pt) WCAG AAA × Fail

Any Text WCAG AAA × Fail

Black Background



This preview shows how the XYZ color 47.5025, 46.0638, 46.9450 looks on a black background.

Color Contrast Check

Large Text (above 18pt) WCAG AA ✓ Pass

Any Text WCAG AA ✓ Pass

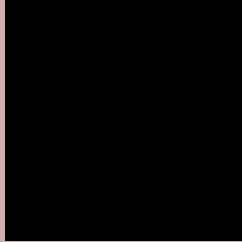
Large Text (above 18pt) WCAG AAA ✓ Pass

Any Text WCAG AAA ✓ Pass

If you want to check with other color combinations, try the [Color Contrast Checker](#).

XYZ 47.5025, 46.0638, 46.9450

Background



This preview shows how black text looks on a background with the XYZ color 47.5025, 46.0638, 46.9450.



This preview shows how white text looks on a background with the XYZ color 47.5025, 46.0638,

Color Blindness Simulation

Color vision deficiency is a very complex topic, and I could not describe the different causes any better than Wikipedia does, so if you want to learn more, you should check out their [article about color blindness](#).

Dichromacy



Original Color

47.5025, 46.0638, 46.9450

Protanopia

44.3647, 46.1712, 48.6931

Deuteranopia

47.1552, 46.1726, 46.9843



Tritanopia

48.5173, 45.8876, 52.7544

Trichromacy



Original Color

47.5025, 46.0638, 46.9450

Protanomaly

45.5944, 46.2216, 48.1135

Deuteranomaly

47.4250, 46.3116, 46.9969

Tritanomaly

48.2889, 46.1019, 50.6094

Monochromacy



Original Color

47.5025, 46.0638, 46.9450

Achromatopsia

45.0092, 47.3531, 51.5676

Achromatomaly

45.7947, 46.8850, 49.8161

CSS Examples

Text

The CSS property to change the color of the text to XYZ 47.5025, 46.0638, 46.9450 is called "color". The color property can be set on classes, ids or directly on the HTML element.

This example shows how text in the color `rgb(203, 174, 175)` looks like.

```
.text, #text, p{  
    color:rgb(203, 174, 175)  
}
```

If you want to add a text shadow in that color use the text-shadow property, you can generate a text shadow directly with our [CSS Text Shadow Generator](#).

Here you see how black text with a 4 pixel rgb(203, 174, 175) colored shadow looks like.

```
.shadow{ text-shadow: 4px 4px 2px rgb(203, 174, 175) }
```

Border

The CSS property to change the border of an element to XYZ 47.5025, 46.0638, 46.9450 is called "border". The border property can be set on classes, ids or directly on the HTML element.

This example shows the color as border, it can be applied via the CSS property "border" or "border-color".

```
.border, #border, table{ border:4px solid rgb(203, 174, 175) }
```


If only the border color should be changed use the property border-color.

```
.border{ border-color:rgb(203, 174, 175) }
```

If you want to add a box shadow in that color use:

Here you see how a box with a 4 pixel rgb(203, 174, 175) colored shadow looks like.

```
.boxshadow{ -moz-box-shadow:4px 4px 4px  
4px rgb(203, 174, 175); -webkit-box-  
shadow:4px 4px 4px 4px rgb(203, 174, 175);  
box-shadow:4px 4px 4px 4px rgb(203, 174,  
175) }
```

Background

The CSS property to change the background color of an element to XYZ 47.5025, 46.0638, 46.9450 is called "background". The background property can be set on classes, ids or directly on the HTML element.

```
.background, #background, body{  
background: rgb(203, 174, 175) }
```

If only the background color should be changed can be used:

```
.background{ background-color: rgb(203,  
174, 175) }
```

This example shows the color as background, it is applied via the CSS property "background".

To optimize and compress your CSS code, you can use our [online CSS compressor and optimizer](#) based on csstidy. If you want to create a linear or radial gradient as background or border, check our [CSS Gradient Generator](#).

Hey! You found this booklet interesting? Support Converting Colors with the new Membership Option!

The pro membership hides all ads, plus gives you double the colors in the color bucket, and more awesome pro features!

[Learn more, Memberships starting at \\$2.50/m!](#)

**Follow me
on Twitter!**

@ConvertingColor