

Converting Colors

XYZ(47.4511, 46.6981, 53.2755)

Have a look what the booklet for
XYZ(47.4511, 46.6981, 53.2755)
contains.

XYZ(47.4567, 46.7679, 53.5396)	3
<i>Conversions</i>	4
<i>Details</i>	6
<i>Harmonies</i>	12
<i>Previews</i>	24
<i>Color Blindness Simulation</i>	28
<i>CSS Examples</i>	31

Color

**XYZ(47.4567, 46.7679,
53.5396)**

Conversions

Conversions Part 1

Format	Color
Hex	C4B1BB
RGB	196, 177, 187
RGB Percent	77%, 69%, 73%
CMY	0.2314, 0.3059, 0.2667
CMYK	0.00, 0.10, 0.05, 0.23
HSL	328°, 14%, 73%
HSV	328°, 10%, 77%
XYZ	47.4567, 46.7679, 53.5396
YIQ	183.8210, 8.1140, 7.1380

Conversions

Conversions Part 2

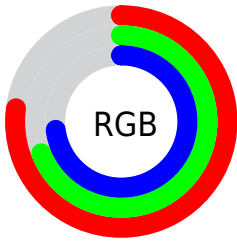
Format	Color
R_{YB}	196, 177, 187
Decimal	12890555
CIE _{Lab}	74.04, 8.56, -2.62
CIE _{LCh}	74, 8.947, 343.003
Yxy	46.7679, 0.3212, 0.3165
Android (android.graphics.Color)	4291080635 (0xFFC4B1BB)
YUV	183.8210, 1.5672, 10.6810
Hunter-Lab	68.3871, 4.1914, 1.4533

Details

The XYZ color **47.4567, 46.7679, 53.5396** is a light color, and the websafe version is hex **CCCCCC**. A complement of this color would be **46.7361, 52.3733, 54.1026**, and the grayscale version is **45.4508, 47.8178, 52.0736**.

A 20% lighter version of the original color is **85.8246, 85.6315, 96.7991**, and **22.6661, 21.8873, 25.5843** is the 20% darker color. If you saturate the color by 10%, you get **42.8981, 39.1899, 47.2733**, and if you desaturate by 10%, it is **52.6383, 55.4878, 60.3319**.

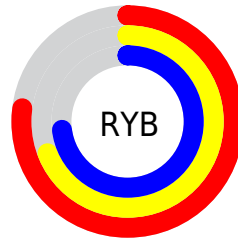
Distribution



Red (77%)

Green (69%)

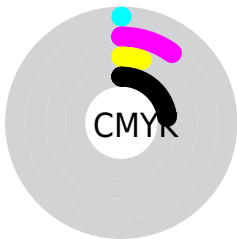
Blue (73%)



Red (77%)

Yellow (69%)

Blue (73%)

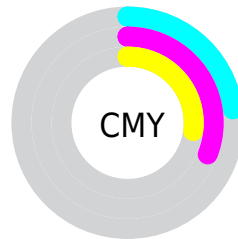


Cyan (0%)

Magenta (10%)

Yellow (5%)

Black (23%)



Cyan (23%)

Magenta (31%)

Yellow (27%)

Brightness & Saturation Gradients

These gradients show how the XYZ color 47.4567, 46.7679, 53.5396 changes by changing the brightness by 10 percent. The first figure shows a shift by +10% for each color and the second figure -10%.

Similar to the brightness gradients but the following saturation gradients show a change of the XYZ color 47.4567, 46.7679, 53.5396 by changing the saturation by 10% instead.

■ 47.4567, 46.7679,
53.5396

■ 47.4567, 46.7679,
53.5396

367.2531,
373.8873, 417.4768

■ 33.6063, 32.8522,
37.8430

■ 85.6095, 85.3671,
96.8475

■ 22.7528, 22.0133,
25.5600

110.6427,
110.8193, 125.2959

■ 14.5307, 13.8666,
16.2720

140.1341,
140.8859, 158.8320

■ 8.5749, 8.0280,
9.5604

174.4492,
175.9512, 197.8743

■ 4.5198, 4.1128,
5.0067

213.9533,
216.3996, 242.8414

■ 2.0002, 1.7369,
2.1924

259.0117,

■ 0.6341, 0.4474,

262.6155, 294.1518

0.6700

309.9899,
314.9833, 352.2241

■ 0.0000, 0.0000,
0.0000

■ 47.4567, 46.7679,
53.5396

■ 47.4567, 46.7679,
53.5396

■ 42.8981, 39.1899,
47.2733

■ 52.6383, 55.4878,
60.3319

■ 38.9336, 32.7000,
41.5157

■ 58.4623, 65.3882,
67.6607

■ 35.5382, 27.2492,
36.2530

■ 64.9521, 76.5136,
75.5400

■ 32.6832, 22.7822,
31.4691

■ 71.9993, 88.6455,
83.9392

■ 30.3374, 19.2388,
27.1473

■ 73.2947, 89.1637,
90.7606

■ 28.4662, 16.5520,
23.2693

■ 74.6600, 89.7098,
97.9499

■ 27.0303, 14.6455,
19.8148

■ 76.0961, 90.2843,
105.5127

■ 25.9836, 13.4293,
16.7614

■ 76.5752, 90.4759,
108.0354

■ 25.2415, 12.7369,
14.0733

Harmonies

Analogous

The Analogous color harmony consists of three colors that are next to each other on the color wheel.



46.5813, 46.7679, 57.6362



47.4567, 46.7679, 53.5396



47.5147, 46.7679, 48.9669

Triad

The Triadic color harmony groups three colors that are evenly spaced from another and form a triangle on the color wheel.



47.4567, 46.7679, 53.5396



43.7634, 46.7679, 42.8165



42.2409, 46.7679, 57.1663

Complementary

The Complementary color scheme is a pair of colors which are on the opposite of each other on the color wheel.



47.4567, 46.7679, 53.5396



46.7361, 52.3733, 54.1026

Split Complementary

Split-complementary colors differ from the complementary color scheme. The scheme consists of three colors, the original color and two neighbors of the complement color.



41.5229, 46.7679, 52.9291



47.4567, 46.7679, 53.5396



42.3876, 46.7679, 44.7511

Square

The Square scheme is like the rectangle color scheme, but the four colors are evenly spaced on the color wheel.



47.4567, 46.7679, 53.5396



45.3562, 46.7679, 42.9581



41.5759, 46.7679, 48.3917



43.5589, 46.7679, 59.8146

Rectangle

The Rectangle color scheme consists of four colors that form a rectangle on the color wheel.



47.4567, 46.7679, 53.5396



47.0798, 46.7679, 46.2757



41.5759, 46.7679, 48.3917



41.9228, 46.7679, 55.8699

Sweetspot

The Sweet Spot groups the original color and five complimentary colors.



47.4580, 46.7699, 53.5406



92.0798, 94.9846, 105.0584



45.9050, 45.8545, 58.6564



19.5428, 20.0508, 22.2703



0.0000, 0.0000, 0.0000



20.3446, 21.4041, 23.3091

Same Dimension

The Same Dimension uses a secret algorithm to generate beautiful new colors.



47.4580, 46.7699, 53.5406



83.8063, 81.1078, 94.0686



46.4878, 46.3819, 48.4315



10.2897, 10.1645, 11.6159



16.2490, 8.1893, 9.2232



0.7367, 0.3677, 0.5809

Inverse Universe

The Inverse Universe completely reimagines the original color for something new.



47.4580, 46.7699, 53.5406



83.8063, 81.1078, 94.0686



47.7646, 52.7847, 59.5190



10.2897, 10.1645, 11.6159



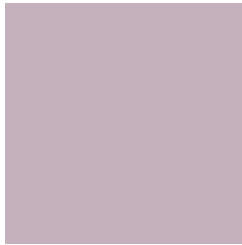
16.2490, 8.1893, 9.2232



0.7367, 0.3677, 0.5809

Previews

White Background



This preview shows how the XYZ color 47.4567, 46.7679, 53.5396 looks on a white background.

Color Contrast Check

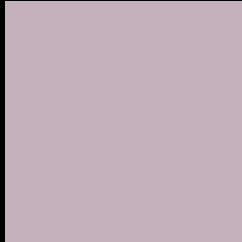
Large Text (above 18pt) WCAG AA × Fail

Any Text WCAG AA × Fail

Large Text (above 18pt) WCAG AAA × Fail

Any Text WCAG AAA × Fail

Black Background



This preview shows how the XYZ color 47.4567, 46.7679, 53.5396 looks on a black background.

Color Contrast Check

Large Text (above 18pt) WCAG AA ✓ Pass

Any Text WCAG AA ✓ Pass

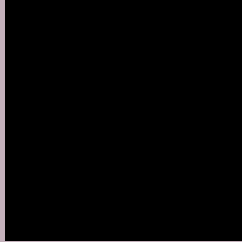
Large Text (above 18pt) WCAG AAA ✓ Pass

Any Text WCAG AAA ✓ Pass

If you want to check with other color combinations, try the [Color Contrast Checker](#).

XYZ 47.4567, 46.7679, 53.5396

Background



This preview shows how black text looks on a background with the XYZ color 47.4567, 46.7679, 53.5396.



This preview shows how white text looks on a background with the XYZ color 47.4567, 46.7679,

Color Blindness Simulation

Color vision deficiency is a very complex topic, and I could not describe the different causes any better than Wikipedia does, so if you want to learn more, you should check out their [article about color blindness](#).

Dichromacy



Original Color

47.4567, 46.7679, 53.5396

Protanopia

45.2376, 46.7891, 54.7910

Deuteranopia

47.7177, 46.9025, 53.5518



Tritanopia

47.5845, 46.5041, 55.1834

Trichromacy



Original Color

47.4567, 46.7679, 53.5396

Protanomaly

46.1374, 46.9647, 54.2103

Deuteranomaly

47.7177, 46.9025, 53.5518

Tritanomaly

47.4756, 46.4606, 54.6097

Monochromacy



Original Color

47.4567, 46.7679, 53.5396

Achromatopsia

45.5594, 47.9320, 52.1980

Achromatomaly

46.0199, 47.2419, 52.5920

CSS Examples

Text

The CSS property to change the color of the text to XYZ 47.4567, 46.7679, 53.5396 is called "color". The color property can be set on classes, ids or directly on the HTML element.

This example shows how text in the color `rgb(196, 177, 187)` looks like.

```
.text, #text, p{  
    color:rgb(196, 177, 187)  
}
```

If you want to add a text shadow in that color use the text-shadow property, you can generate a text shadow directly with our [CSS Text Shadow Generator](#).

Here you see how black text with a 4 pixel rgb(196, 177, 187) colored shadow looks like.

```
.shadow{ text-shadow: 4px 4px 2px rgb(196, 177, 187) }
```

Border

The CSS property to change the border of an element to XYZ 47.4567, 46.7679, 53.5396 is called "border". The border property can be set on classes, ids or directly on the HTML element.

This example shows the color as border, it can be applied via the CSS property "border" or "border-color".

```
.border, #border, table{ border:4px solid rgb(196, 177, 187) }
```


If only the border color should be changed use the property border-color.

```
.border{ border-color:rgb(196, 177, 187) }
```

If you want to add a box shadow in that color use:

Here you see how a box with a 4 pixel rgb(196, 177, 187) colored shadow looks like.

```
.boxshadow{ -moz-box-shadow:4px 4px 4px  
4px rgb(196, 177, 187); -webkit-box-  
shadow:4px 4px 4px 4px rgb(196, 177, 187);  
box-shadow:4px 4px 4px 4px rgb(196, 177,  
187) }
```

Background

The CSS property to change the background color of an element to XYZ 47.4567, 46.7679, 53.5396 is called "background". The background property can be set on classes, ids or directly on the HTML element.

```
.background, #background, body{  
background: rgb(196, 177, 187) }
```

If only the background color should be changed can be used:

```
.background{ background-color: rgb(196,  
177, 187) }
```

This example shows the color as background, it is applied via the CSS property "background".

To optimize and compress your CSS code, you can use our [online CSS compressor and optimizer](#) based on csstidy. If you want to create a linear or radial gradient as background or border, check our [CSS Gradient Generator](#).

Hey! You found this booklet interesting? Support Converting Colors with the new Membership Option!

The pro membership hides all ads, plus gives you double the colors in the color bucket, and more awesome pro features!

[Learn more, Memberships starting at \\$2.50/m!](#)

**Follow me
on Twitter!**

@ConvertingColor