

Converting Colors

XYZ(47.4658, 44.4065, 39.9037)

Have a look what the booklet for
XYZ(47.4658, 44.4065, 39.9037)
contains.

XYZ(47.5870, 44.5755, 39.8140)	3
<i>Conversions</i>	4
<i>Details</i>	6
<i>Harmonies</i>	12
<i>Previews</i>	24
<i>Color Blindness Simulation</i>	28
<i>CSS Examples</i>	31

Color

**XYZ(47.5870, 44.5755,
39.8140)**

Conversions

Conversions Part 1

Format	Color
Hex	D4A8A1
RGB	212, 168, 161
RGB Percent	83%, 66%, 63%
CMY	0.1686, 0.3412, 0.3686
CMYK	0.00, 0.21, 0.24, 0.17
HSL	8°, 37%, 73%
HSV	8°, 24%, 83%
XYZ	47.5870, 44.5755, 39.8140
YIQ	180.3580, 28.4710, 7.1510

Conversions

Conversions Part 2

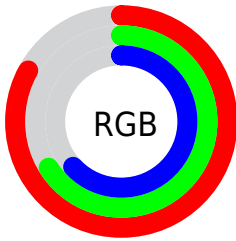
Format	Color
R _Y B	212, 169, 161
Decimal	13936801
CIE Lab	72.61, 15.08, 9.76
CIE LCh	73, 17.964, 32.913
Yxy	44.5755, 0.3606, 0.3378
Android (android.graphics.Color)	4292126881 (0xFFD4A8A1)
YUV	180.3580, -9.5435, 27.7500
Hunter-Lab	66.7649, 10.3882, 11.3789

Details

The XYZ color **47.5870, 44.5755, 39.8140** is a light color, and the websafe version is hex **CC9999**. A complement of this color would be **48.4123, 55.9915, 70.5434**, and the grayscale version is **43.6148, 45.8861, 49.9700**.

A 20% lighter version of the original color is **80.0223, 78.9932, 75.9953**, and **22.9645, 20.7847, 17.5533** is the 20% darker color. If you saturate the color by 10%, you get **42.7316, 37.6071, 29.7408**, and if you desaturate by 10%, it is **53.2366, 52.6245, 51.7168**.

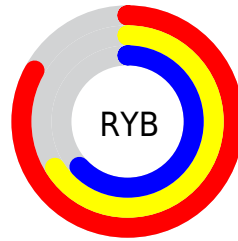
Distribution



Red (83%)

Green (66%)

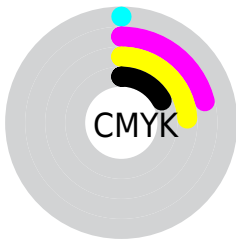
Blue (63%)



Red (83%)

Yellow (66%)

Blue (63%)

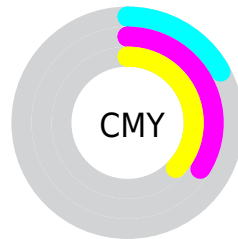


Cyan (0%)

Magenta (21%)

Yellow (24%)

Black (17%)



Cyan (17%)


Magenta (34%)


Yellow (37%)

Brightness & Saturation Gradients


These gradients show how the XYZ color 47.5870, 44.5755, 39.8140 changes by changing the brightness by 10 percent. The first figure shows a shift by +10% for each color and the second figure -10%.


Similar to the brightness gradients but the following saturation gradients show a change of the XYZ color 47.5870, 44.5755, 39.8140 by changing the saturation by 10% instead.


 47.5870, 44.5755,
39.8140


 47.5870, 44.5755,
39.8140


367.7626,
365.0516, 360.8677

 33.7098, 31.1232,
27.0809


 85.8026, 82.0830,
76.1142

 22.8326, 20.6927,
17.4010


 110.8717,
106.9071, 100.5183

 14.5900, 12.8995,
10.3558


140.4022,
136.2904, 129.6499

 8.6166, 7.3594,
5.5268

174.7594,
170.6176, 163.9274

 4.5470, 3.6879,
2.4955

214.3087,
210.2729, 203.7694

 2.0160, 1.5005,
0.8378

259.4155,

 0.6429, 0.2891,

255.6407, 249.5944

0.0000

310.4450,
307.1055, 301.8210

■ 0.0000, 0.0000,
0.0000

■ 47.5870, 44.5755,
39.8140

■ 47.5870, 44.5755,
39.8140

■ 42.7316, 37.6071,
29.7408

■ 53.2366, 52.6245,
51.7168

■ 38.6313, 31.6673,
21.4037

■ 59.7104, 61.7911,
65.5307

■ 35.2486, 26.7091,
14.7051

■ 67.0409, 72.1179,
81.3360

■ 32.5418, 22.6794,
9.5366

■ 75.2580, 83.6436,
99.2073

■ 30.4645, 19.5197,
5.7766

■ 80.9615, 92.7371,
108.2407

■ 28.9643, 17.1653,
3.2850

■ 27.9799, 15.5418,
1.8926

■ 27.5937, 14.8815,
1.4181

Harmonies

Analogous

The Analogous color harmony consists of three colors that are next to each other on the color wheel.



48.6229, 44.5755, 47.6702



47.5870, 44.5755, 39.8140



45.1484, 44.5755, 34.8323

Triad

The Triadic color harmony groups three colors that are evenly spaced from another and form a triangle on the color wheel.



47.5870, 44.5755, 39.8140



37.2651, 44.5755, 41.1493



42.6722, 44.5755, 67.7203

Complementary

The Complementary color scheme is a pair of colors which are on the opposite of each other on the color wheel.



47.5870, 44.5755, 39.8140



48.4123, 55.9915, 70.5434

Split Complementary

Split-complementary colors differ from the complementary color scheme. The scheme consists of three colors, the original color and two neighbors of the complement color.



39.7035, 44.5755, 65.4294



47.5870, 44.5755, 39.8140



36.6734, 44.5755, 49.4105

Square

The Square scheme is like the rectangle color scheme, but the four colors are evenly spaced on the color wheel.



47.5870, 44.5755, 39.8140



39.2017, 44.5755, 35.5344



37.5447, 44.5755, 58.4450



45.6997, 44.5755, 64.3734

Rectangle

The Rectangle color scheme consists of four colors that form a rectangle on the color wheel.



47.5870, 44.5755, 39.8140



43.1095, 44.5755, 33.4506



37.5447, 44.5755, 58.4450



41.6344, 44.5755, 67.5847

Sweetspot

The Sweet Spot groups the original color and five complimentary colors.



47.5882, 44.5776, 39.8149



87.5909, 89.4690, 92.8884



50.9402, 43.9047, 63.6742



18.6169, 18.9645, 19.6015



0.0000, 0.0000, 0.0000



20.3446, 21.4041, 23.3091

Same Dimension

The Same Dimension uses a secret algorithm to generate beautiful new colors.



47.5882, 44.5776, 39.8149



68.2614, 61.9498, 52.1027



52.7211, 54.8433, 41.5259



12.5594, 12.6931, 12.9488



17.0776, 9.2725, 0.8897



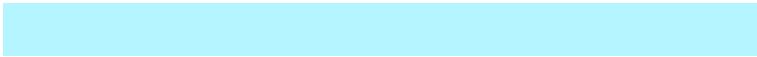
1.0756, 0.6504, 0.0689

Inverse Universe

The Inverse Universe completely reimagines the original color for something new.



48.4123, 55.9915, 70.5434



69.7230, 82.2602, 106.8108



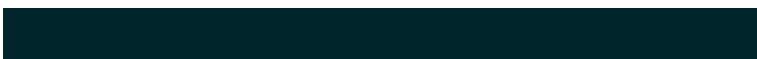
42.8428, 44.8525, 68.6869



12.6400, 13.8034, 15.9356



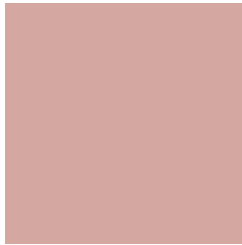
17.8302, 23.9222, 42.1309



1.1165, 1.5249, 2.5548

Previews

White Background



This preview shows how the XYZ color 47.5870, 44.5755, 39.8140 looks on a white background.

Color Contrast Check

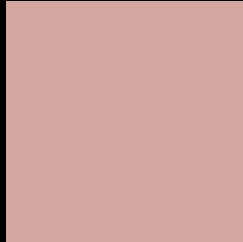
Large Text (above 18pt) WCAG AA × Fail

Any Text WCAG AA × Fail

Large Text (above 18pt) WCAG AAA × Fail

Any Text WCAG AAA × Fail

Black Background



This preview shows how the XYZ color 47.5870, 44.5755, 39.8140 looks on a black background.

Color Contrast Check

Large Text (above 18pt) WCAG AA ✓ Pass

Any Text WCAG AA ✓ Pass

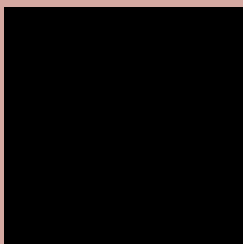
Large Text (above 18pt) WCAG AAA ✓ Pass

Any Text WCAG AAA ✓ Pass

If you want to check with other color combinations, try the [Color Contrast Checker](#).

XYZ 47.5870, 44.5755, 39.8140

Background



This preview shows how black text looks on a background with the XYZ color 47.5870, 44.5755, 39.8140.



This preview shows how white text looks on a background with the XYZ color 47.5870, 44.5755,

39.8140.

Color Blindness Simulation

Color vision deficiency is a very complex topic, and I could not describe the different causes any better than Wikipedia does, so if you want to learn more, you should check out their [article about color blindness](#).

Dichromacy



Original Color

47.5870, 44.5755, 39.8140

Protanopia

42.5705, 44.7843, 42.4769

Deuteranopia

45.4548, 44.5997, 39.4706



Tritanopia

49.2226, 44.4208, 48.0992

Trichromacy



Original Color

47.5870, 44.5755, 39.8140

Protanomaly

44.0850, 44.4218, 41.3727

Deuteranomaly

46.3617, 44.7857, 39.4587

Tritanomaly

48.5232, 44.3971, 45.0418

Monochromacy



Original Color

47.5870, 44.5755, 39.8140

Achromatopsia

43.3819, 45.6411, 49.7032

Achromatomaly

44.8064, 45.2743, 45.9124

CSS Examples

Text

The CSS property to change the color of the text to XYZ 47.5870, 44.5755, 39.8140 is called "color". The color property can be set on classes, ids or directly on the HTML element.

This example shows how text in the color `rgb(212, 168, 161)` looks like.

```
.text, #text, p{  
    color:rgb(212, 168, 161)  
}
```

If you want to add a text shadow in that color use the text-shadow property, you can generate a text shadow directly with our [CSS Text Shadow Generator](#).

Here you see how black text with a 4 pixel rgb(212, 168, 161) colored shadow looks like.

```
.shadow{ text-shadow: 4px 4px 2px rgb(212, 168, 161) }
```

Border

The CSS property to change the border of an element to XYZ 47.5870, 44.5755, 39.8140 is called "border". The border property can be set on classes, ids or directly on the HTML element.

This example shows the color as border, it can be applied via the CSS property "border" or "border-color".

```
.border, #border, table{ border:4px solid rgb(212, 168, 161) }
```


If only the border color should be changed use the property `border-color`.

```
.border{ border-color:rgb(212, 168, 161) }
```

If you want to add a box shadow in that color use:

Here you see how a box with a 4 pixel `rgb(212, 168, 161)` colored shadow looks like.

```
.boxshadow{ -moz-box-shadow:4px 4px 4px  
4px rgb(212, 168, 161); -webkit-box-  
shadow:4px 4px 4px 4px rgb(212, 168, 161);  
box-shadow:4px 4px 4px 4px rgb(212, 168,  
161) }
```

Background

The CSS property to change the background color of an element to XYZ 47.5870, 44.5755, 39.8140 is called "background". The background property can be set on classes, ids or directly on the HTML element.

```
.background, #background, body{  
background: rgb(212, 168, 161) }
```

If only the background color should be changed can be used:

```
.background{ background-color: rgb(212,  
168, 161) }
```

This example shows the color as background, it is applied via the CSS property "background".

To optimize and compress your CSS code, you can use our [online CSS compressor and optimizer](#) based on csstidy. If you want to create a linear or radial gradient as background or border, check our [CSS Gradient Generator](#).

Hey! You found this booklet interesting? Support Converting Colors with the new Membership Option!

The pro membership hides all ads, plus gives you double the colors in the color bucket, and more awesome pro features!

[Learn more, Memberships starting at \\$2.50/m!](#)

**Follow me
on Twitter!**

@ConvertingColor