

Converting Colors

XYZ(47.5367, 47.5821, 43.0989)

Have a look what the booklet for
XYZ(47.5367, 47.5821, 43.0989)
contains.

XYZ(47.7238, 47.7267, 43.2561)	3
<i>Conversions</i>	4
<i>Details</i>	6
<i>Harmonies</i>	12
<i>Previews</i>	24
<i>Color Blindness Simulation</i>	28
<i>CSS Examples</i>	31

Color

**XYZ(47.7238, 47.7267,
43.2561)**

Conversions

Conversions Part 1

Format	Color
Hex	CBB3A7
RGB	203, 179, 167
RGB Percent	80%, 70%, 65%
CMY	0.2039, 0.2980, 0.3451
CMYK	0.00, 0.12, 0.18, 0.20
HSL	20°, 26%, 73%
HSV	20°, 18%, 80%
XYZ	47.7238, 47.7267, 43.2561
YIQ	184.8080, 18.1560, 1.3560

Conversions

Conversions Part 2

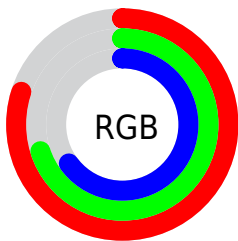
Format	Color
RYB	203, 185, 167
Decimal	13349799
CIELab	74.65, 6.66, 9.27
CIELCh	75, 11.418, 54.290
Yxy	47.7267, 0.3441, 0.3441
Android (android.graphics.Color)	4291539879 (0xFFCBB3A7)
YUV	184.8080, -8.7793, 15.9544
Hunter-Lab	69.0845, 2.4105, 11.2357

Details

The XYZ color **47.7238, 47.7267, 43.2561** is a light color, and the websafe version is hex **CCCCCC**. A complement of this color would be **45.3465, 49.7880, 63.7205**, and the grayscale version is **46.0486, 48.4467, 52.7585**.

A 20% lighter version of the original color is **84.1331, 85.9506, 81.2631**, and **22.9498, 22.5491, 19.3625** is the 20% darker color. If you saturate the color by 10%, you get **43.4126, 41.8752, 33.2757**, and if you desaturate by 10%, it is **52.5984, 54.2326, 54.8788**.

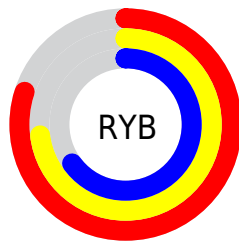
Distribution



Red (80%)

Green (70%)

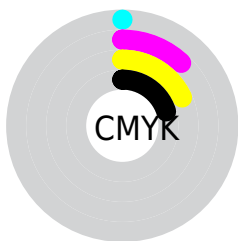
Blue (65%)



Red (80%)

Yellow (73%)

Blue (65%)

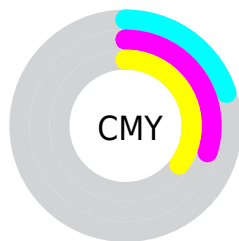


Cyan (0%)

Magenta (12%)

Yellow (18%)

Black (20%)



Cyan (20%)


Magenta (30%)


Yellow (35%)

Brightness & Saturation Gradients


These gradients show how the XYZ color 47.7238, 47.7267, 43.2561 changes by changing the brightness by 10 percent. The first figure shows a shift by +10% for each color and the second figure -10%.


Similar to the brightness gradients but the following saturation gradients show a change of the XYZ color 47.7238, 47.7267, 43.2561 by changing the saturation by 10% instead.


 47.7238, 47.7267,
43.2561


 47.7238, 47.7267,
43.2561

368.2971,
377.7078, 375.6160

 33.8186, 33.6105,
29.7532


 86.0052, 86.7973,
81.3877

 22.9165, 22.5945,
19.4009

 111.1121,
112.5206, 106.8535

 14.6522, 14.2944,
11.7806


140.6836,
142.8816, 137.1440

 8.6604, 8.3257,
6.4737

175.0850,
178.2649, 172.6777

 4.5757, 4.3041,
3.0618

214.6817,
219.0547, 213.8732

 2.0327, 1.8451,
1.1263

259.8390,

 0.6522, 0.5150,

265.6356, 261.1491

0.0000

310.9224,
318.3918, 314.9239

■ 0.0000, 0.0000,
0.0000

■ 47.7238, 47.7267,
43.2561

■ 47.7238, 47.7267,
43.2561

■ 43.4126, 41.8752,
33.2757

■ 52.5984, 54.2326,
54.8788

■ 39.6395, 36.6510,
24.8598

■ 58.0526, 61.4063,
68.2107

■ 36.3831, 32.0344,
17.9289

■ 64.1068, 69.2687,
83.3187

■ 33.6189, 28.0020,
12.3952

■ 70.7793, 77.8381,
100.2649

■ 31.3200, 24.5291,
8.1613

■ 75.8362, 86.2314,
107.2551

■ 29.4569, 21.5887,
5.1174

■ 78.4388, 91.4366,
108.1226

■ 27.9958, 19.1514,
3.1352

■ 26.8917, 17.1819,
2.0312

■ 26.6771, 16.7931,
1.8354

Harmonies

Analogous

The Analogous color harmony consists of three colors that are next to each other on the color wheel.



49.0850, 47.7267, 47.4206



47.7238, 47.7267, 43.2561



45.7596, 47.7267, 41.4373

Triad

The Triadic color harmony groups three colors that are evenly spaced from another and form a triangle on the color wheel.



47.7238, 47.7267, 43.2561



41.5197, 47.7267, 50.8413



47.0184, 47.7267, 63.0539

Complementary

The Complementary color scheme is a pair of colors which are on the opposite of each other on the color wheel.



47.7238, 47.7267, 43.2561



45.3465, 49.7880, 63.7205

Split Complementary

Split-complementary colors differ from the complementary color scheme. The scheme consists of three colors, the original color and two neighbors of the complement color.



44.9683, 47.7267, 64.1428



47.7238, 47.7267, 43.2561



41.8337, 47.7267, 56.7935

Square

The Square scheme is like the rectangle color scheme, but the four colors are evenly spaced on the color wheel.



47.7238, 47.7267, 43.2561



42.2097, 47.7267, 45.5980



43.0810, 47.7267, 61.7736



48.6691, 47.7267, 58.9015

Rectangle

The Rectangle color scheme consists of four colors that form a rectangle on the color wheel.



47.7238, 47.7267, 43.2561



44.3883, 47.7267, 41.6923



43.0810, 47.7267, 61.7736



46.3515, 47.7267, 63.8029

Sweetspot

The Sweet Spot groups the original color and five complimentary colors.



47.7251, 47.7288, 43.2571



90.4130, 93.9027, 97.5612



47.8519, 44.0962, 55.2802



19.2170, 19.9206, 20.5538



0.0000, 0.0000, 0.0000



20.3446, 21.4041, 23.3091

Same Dimension

The Same Dimension uses a secret algorithm to generate beautiful new colors.



47.7251, 47.7288, 43.2571



77.2469, 76.3208, 66.1963



51.5705, 55.4197, 44.5389



11.5129, 11.8147, 11.7531



17.0524, 10.8378, 1.1931



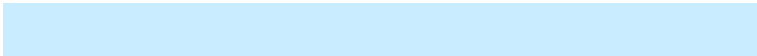
0.9494, 0.6984, 0.0848

Inverse Universe

The Inverse Universe completely reimagines the original color for something new.



45.3465, 49.7880, 63.7205



72.5846, 80.3522, 106.2916



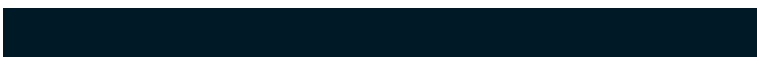
41.6601, 42.4151, 62.4917



11.2159, 12.0722, 14.3094



12.4883, 14.0005, 38.0004



0.7122, 0.8582, 1.9831

Previews

White Background



This preview shows how the XYZ color 47.7238, 47.7267, 43.2561 looks on a white background.

Color Contrast Check

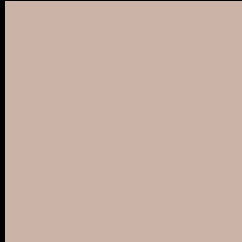
Large Text (above 18pt) WCAG AA × Fail

Any Text WCAG AA × Fail

Large Text (above 18pt) WCAG AAA × Fail

Any Text WCAG AAA × Fail

Black Background



This preview shows how the XYZ color 47.7238, 47.7267, 43.2561 looks on a black background.

Color Contrast Check

Large Text (above 18pt) WCAG AA ✓ Pass

Any Text WCAG AA ✓ Pass

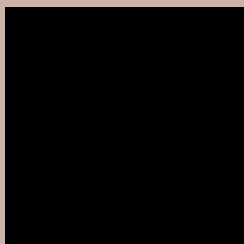
Large Text (above 18pt) WCAG AAA ✓ Pass

Any Text WCAG AAA ✓ Pass

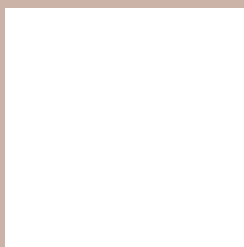
If you want to check with other color combinations, try the [Color Contrast Checker](#).

XYZ 47.7238, 47.7267, 43.2561

Background



This preview shows how black text looks on a background with the XYZ color 47.7238, 47.7267, 43.2561.



This preview shows how white text looks on a background with the XYZ color 47.7238, 47.7267,

43.2561.

Color Blindness Simulation

Color vision deficiency is a very complex topic, and I could not describe the different causes any better than Wikipedia does, so if you want to learn more, you should check out their [article about color blindness](#).

Dichromacy



Original Color

47.7238, 47.7267, 43.2561

Protanopia

45.5808, 47.8079, 44.3616

Deuteranopia

48.7096, 47.6442, 43.1882



Tritanopia

50.1642, 47.8466, 54.7355

Trichromacy



Original Color

47.7238, 47.7267, 43.2561

Protanomaly

46.3015, 47.8852, 43.8482

Deuteranomaly

48.3490, 47.7526, 43.2281

Tritanomaly

49.2395, 47.7596, 50.3394

Monochromacy



Original Color

47.7238, 47.7267, 43.2561

Achromatopsia

46.1135, 48.5150, 52.8328

Achromatomaly

46.7076, 48.2878, 48.9782

CSS Examples

Text

The CSS property to change the color of the text to XYZ 47.7238, 47.7267, 43.2561 is called "color". The color property can be set on classes, ids or directly on the HTML element.

This example shows how text in the color `rgb(203, 179, 167)` looks like.

```
.text, #text, p{  
    color:rgb(203, 179, 167)  
}
```

If you want to add a text shadow in that color use the text-shadow property, you can generate a text shadow directly with our [CSS Text Shadow Generator](#).

Here you see how black text with a 4 pixel rgb(203, 179, 167) colored shadow looks like.

```
.shadow{ text-shadow: 4px 4px 2px rgb(203, 179, 167) }
```

Border

The CSS property to change the border of an element to XYZ 47.7238, 47.7267, 43.2561 is called "border". The border property can be set on classes, ids or directly on the HTML element.

This example shows the color as border, it can be applied via the CSS property "border" or "border-color".

```
.border, #border, table{ border:4px solid rgb(203, 179, 167) }
```


If only the border color should be changed use the property `border-color`.

```
.border{ border-color:rgb(203, 179, 167) }
```

If you want to add a box shadow in that color use:

Here you see how a box with a 4 pixel `rgb(203, 179, 167)` colored shadow looks like.

```
.boxshadow{ -moz-box-shadow:4px 4px 4px  
4px rgb(203, 179, 167); -webkit-box-  
shadow:4px 4px 4px 4px rgb(203, 179, 167);  
box-shadow:4px 4px 4px 4px rgb(203, 179,  
167) }
```

Background

The CSS property to change the background color of an element to XYZ 47.7238, 47.7267, 43.2561 is called "background". The background property can be set on classes, ids or directly on the HTML element.

```
.background, #background, body{  
background: rgb(203, 179, 167) }
```

If only the background color should be changed can be used:

```
.background{ background-color: rgb(203,  
179, 167) }
```

This example shows the color as background, it is applied via the CSS property "background".

To optimize and compress your CSS code, you can use our [online CSS compressor and optimizer](#) based on csstidy. If you want to create a linear or radial gradient as background or border, check our [CSS Gradient Generator](#).

Hey! You found this booklet interesting? Support Converting Colors with the new Membership Option!

The pro membership hides all ads, plus gives you double the colors in the color bucket, and more awesome pro features!

[Learn more, Memberships starting at \\$2.50/m!](#)

**Follow me
on Twitter!**

@ConvertingColor