

Converting Colors

XYZ(47.5433, 46.5373, 47.3426)

Have a look what the booklet for
XYZ(47.5433, 46.5373, 47.3426)
contains.

XYZ(47.7189, 46.7418, 47.5813)	3
<i>Conversions</i>	4
<i>Details</i>	6
<i>Harmonies</i>	12
<i>Previews</i>	24
<i>Color Blindness Simulation</i>	28
<i>CSS Examples</i>	31

Color

**XYZ(47.7189, 46.7418,
47.5813)**

Conversions

Conversions Part 1

Format	Color
Hex	CAB0B0
RGB	202, 176, 176
RGB Percent	79%, 69%, 69%
CMY	0.2078, 0.3098, 0.3098
CMYK	0.00, 0.13, 0.13, 0.21
HSL	0°, 20%, 74%
HSV	0°, 13%, 79%
XYZ	47.7189, 46.7418, 47.5813
YIQ	183.7740, 15.4960, 5.5120

Conversions

Conversions Part 2

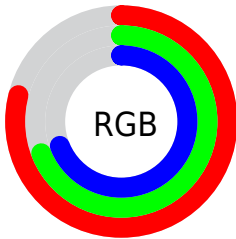
Format	Color
R _Y B	202, 176, 176
Decimal	13283504
CIE Lab	74.02, 9.36, 3.44
CIE LCh	74, 9.971, 20.202
Yxy	46.7418, 0.3359, 0.3291
Android (android.graphics.Color)	4291473584 (0xFFCAB0B0)
YUV	183.7740, -3.8326, 15.9842
Hunter-Lab	68.3680, 4.9440, 6.5942

Details

The XYZ color **47.7189, 46.7418, 47.5813** is a light color, and the websafe version is hex **CC9999**. A complement of this color would be **49.6854, 55.7342, 64.0166**, and the grayscale version is **45.4508, 47.8178, 52.0736**.

A 20% lighter version of the original color is **84.6621, 84.7994, 88.2497**, and **22.9338, 21.9171, 22.0905** is the 20% darker color. If you saturate the color by 10%, you get **42.1974, 38.6627, 36.6029**, and if you desaturate by 10%, it is **54.1296, 56.1225, 60.3246**.

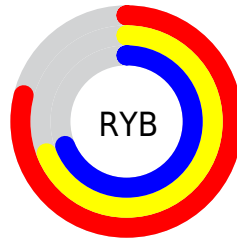
Distribution



Red (79%)

Green (69%)

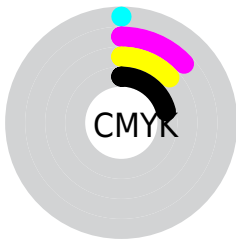
Blue (69%)



Red (79%)

Yellow (69%)

Blue (69%)

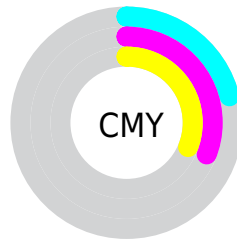


Cyan (0%)

Magenta (13%)

Yellow (13%)

Black (21%)



Cyan (21%)

Magenta (31%)

Yellow (31%)

Brightness & Saturation Gradients

These gradients show how the XYZ color 47.7189, 46.7418, 47.5813 changes by changing the brightness by 10 percent. The first figure shows a shift by +10% for each color and the second figure -10%.

Similar to the brightness gradients but the following saturation gradients show a change of the XYZ color 47.7189, 46.7418, 47.5813 by changing the saturation by 10% instead.

■ 47.7189, 46.7418,
47.5813

■ 47.7189, 46.7418,
47.5813

368.2780,
373.7830, 393.5908

■ 33.8147, 32.8316,
33.1378

■ 85.9980, 85.3281,
87.9397

■ 22.9135, 21.9975,
21.9600

111.1035,
110.7729, 114.6917

■ 14.6500, 13.8550,
13.6295

140.6735,
140.8315, 146.3836

■ 8.6588, 8.0199,
7.7276

175.0733,
175.8881, 183.4340

■ 4.5746, 4.1077,
3.8359

214.6683,
216.3271, 226.2614

■ 2.0321, 1.7340,
1.5358

259.8239,

■ 0.6519, 0.4455,

262.5330, 275.2843

0.2444

310.9053,
314.8902, 330.9212

■ 0.0000, 0.0000,
0.0000

■ 47.7189, 46.7418,
47.5813

■ 47.7189, 46.7418,
47.5813

■ 42.1974, 38.6627,
36.6029

■ 54.1296, 56.1225,
60.3246

■ 37.5223, 31.8217,
27.3088

■ 61.4623, 66.8519,
74.9025

■ 33.6529, 26.1596,
19.6165

■ 69.7527, 78.9828,
91.3847

■ 30.5437, 21.6099,
13.4357

■ 78.1673, 91.2967,
108.1099

■ 28.1447, 18.0994,
8.6669

■ 26.3999, 15.5460,
5.1987

■ 25.2448, 13.8557,
2.9031

■ 24.6022, 12.9151,
1.6261

■ 24.3576, 12.5573,
1.1400

Harmonies

Analogous

The Analogous color harmony consists of three colors that are next to each other on the color wheel.



47.8877, 46.7418, 52.5813



47.7189, 46.7418, 47.5813



46.6551, 46.7418, 43.7239

Triad

The Triadic color harmony groups three colors that are evenly spaced from another and form a triangle on the color wheel.



47.7189, 46.7418, 47.5813



41.8470, 46.7418, 44.8704



43.8464, 46.7418, 61.1839

Complementary

The Complementary color scheme is a pair of colors which are on the opposite of each other on the color wheel.



47.7189, 46.7418, 47.5813



49.6854, 55.7342, 64.0166

Split Complementary

Split-complementary colors differ from the complementary color scheme. The scheme consists of three colors, the original color and two neighbors of the complement color.



42.2704, 46.7418, 58.8078



47.7189, 46.7418, 47.5813



41.1366, 46.7418, 49.2430

Square

The Square scheme is like the rectangle color scheme, but the four colors are evenly spaced on the color wheel.



47.7189, 46.7418, 47.5813



43.2544, 46.7418, 42.2328



41.2895, 46.7418, 54.3567



45.6199, 46.7418, 60.6649

Rectangle

The Rectangle color scheme consists of four colors that form a rectangle on the color wheel.



47.7189, 46.7418, 47.5813



45.5968, 46.7418, 42.2118



41.2895, 46.7418, 54.3567



43.2768, 46.7418, 60.6915

Sweetspot

The Sweet Spot groups the original color and five complimentary colors.



47.7202, 46.7439, 47.5823



90.2833, 93.0251, 99.4234



50.5436, 47.8721, 62.4538



19.1386, 19.6394, 20.9115



0.0000, 0.0000, 0.0000



20.3446, 21.4041, 23.3091

Same Dimension

The Same Dimension uses a secret algorithm to generate beautiful new colors.



47.7202, 46.7439, 47.5823



78.4817, 75.7564, 75.9613



50.3917, 52.0869, 48.4728



11.2125, 11.2139, 11.6530



15.6738, 8.0805, 0.7336



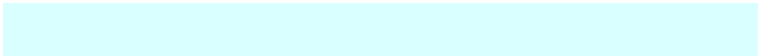
0.8086, 0.4170, 0.0379

Inverse Universe

The Inverse Universe completely reimagines the original color for something new.



49.6854, 55.7342, 64.0166



82.3493, 93.4500, 108.3051



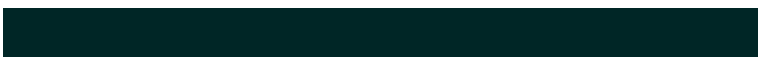
46.7633, 49.8902, 63.0426



11.5432, 12.7268, 14.4185



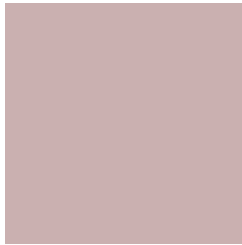
20.4466, 29.9172, 40.6532



1.0549, 1.5435, 2.0973

Previews

White Background



This preview shows how the XYZ color 47.7189, 46.7418, 47.5813 looks on a white background.

Color Contrast Check

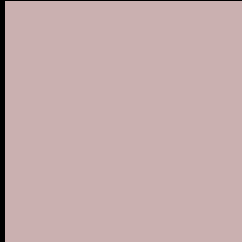
Large Text (above 18pt) WCAG AA × Fail

Any Text WCAG AA × Fail

Large Text (above 18pt) WCAG AAA × Fail

Any Text WCAG AAA × Fail

Black Background



This preview shows how the XYZ color 47.7189, 46.7418, 47.5813 looks on a black background.

Color Contrast Check

Large Text (above 18pt) WCAG AA ✓ Pass

Any Text WCAG AA ✓ Pass

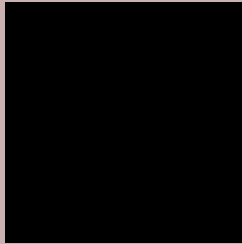
Large Text (above 18pt) WCAG AAA ✓ Pass

Any Text WCAG AAA ✓ Pass

If you want to check with other color combinations, try the [Color Contrast Checker](#).

XYZ 47.7189, 46.7418, 47.5813

Background



This preview shows how black text looks on a background with the XYZ color 47.7189, 46.7418, 47.5813.



This preview shows how white text looks on a background with the XYZ color 47.7189, 46.7418,

Color Blindness Simulation

Color vision deficiency is a very complex topic, and I could not describe the different causes any better than Wikipedia does, so if you want to learn more, you should check out their [article about color blindness](#).

Dichromacy



Original Color

47.7189, 46.7418, 47.5813

Protanopia

44.9103, 46.7415, 49.3028

Deuteranopia

47.7189, 46.7418, 47.5813



Tritanopia

49.1150, 46.7403, 54.0101

Trichromacy



Original Color

47.7189, 46.7418, 47.5813

Protanomaly

45.8942, 46.6610, 48.7071

Deuteranomaly

47.7189, 46.7418, 47.5813

Tritanomaly

48.6103, 46.8171, 51.8220

Monochromacy



Original Color

47.7189, 46.7418, 47.5813

Achromatopsia

45.5594, 47.9320, 52.1980

Achromatomaly

46.3502, 47.4603, 50.4339

CSS Examples

Text

The CSS property to change the color of the text to XYZ 47.7189, 46.7418, 47.5813 is called "color". The color property can be set on classes, ids or directly on the HTML element.

This example shows how text in the color rgb(202, 176, 176) looks like.

```
.text, #text, p{  
    color:rgb(202, 176, 176)  
}
```

If you want to add a text shadow in that color use the text-shadow property, you can generate a text shadow directly with our [CSS Text Shadow Generator](#).

Here you see how black text with a 4 pixel rgb(202, 176, 176) colored shadow looks like.

```
.shadow{ text-shadow: 4px 4px 2px rgb(202, 176, 176) }
```

Border

The CSS property to change the border of an element to XYZ 47.7189, 46.7418, 47.5813 is called "border". The border property can be set on classes, ids or directly on the HTML element.

This example shows the color as border, it can be applied via the CSS property "border" or "border-color".

```
.border, #border, table{ border:4px solid rgb(202, 176, 176) }
```


If only the border color should be changed use the property `border-color`.

```
.border{ border-color:rgb(202, 176, 176) }
```

If you want to add a box shadow in that color use:

Here you see how a box with a 4 pixel `rgb(202, 176, 176)` colored shadow looks like.

```
.boxshadow{ -moz-box-shadow:4px 4px 4px  
4px rgb(202, 176, 176); -webkit-box-  
shadow:4px 4px 4px 4px rgb(202, 176, 176);  
box-shadow:4px 4px 4px 4px rgb(202, 176,  
176) }
```

Background

The CSS property to change the background color of an element to XYZ 47.7189, 46.7418, 47.5813 is called "background". The background property can be set on classes, ids or directly on the HTML element.

```
.background, #background, body{  
background: rgb(202, 176, 176) }
```

If only the background color should be changed can be used:

```
.background{ background-color: rgb(202,  
176, 176) }
```

This example shows the color as background, it is applied via the CSS property "background".

To optimize and compress your CSS code, you can use our [online CSS compressor and optimizer](#) based on csstidy. If you want to create a linear or radial gradient as background or border, check our [CSS Gradient Generator](#).

Hey! You found this booklet interesting? Support Converting Colors with the new Membership Option!

The pro membership hides all ads, plus gives you double the colors in the color bucket, and more awesome pro features!

[Learn more, Memberships starting at \\$2.50/m!](#)

**Follow me
on Twitter!**

@ConvertingColor