

Converting Colors

XYZ(47.5949, 46.7047, 33.2916)

Have a look what the booklet for
XYZ(47.5949, 46.7047, 33.2916)
contains.

XYZ(47.5922, 46.7013, 33.2939)	3
<i>Conversions</i>	4
<i>Details</i>	6
<i>Harmonies</i>	12
<i>Previews</i>	24
<i>Color Blindness Simulation</i>	28
<i>CSS Examples</i>	31

Color

**XYZ(47.5922, 46.7013,
33.2939)**

Conversions

Conversions Part 1

Format	Color
Hex	D4AF91
RGB	212, 175, 145
RGB Percent	83%, 69%, 57%
CMY	0.1686, 0.3137, 0.4314
CMYK	0.00, 0.17, 0.32, 0.17
HSL	27°, 44%, 70%
HSV	27°, 32%, 83%
XYZ	47.5922, 46.7013, 33.2939
YIQ	182.6430, 31.6820, -1.4860

Conversions

Conversions Part 2

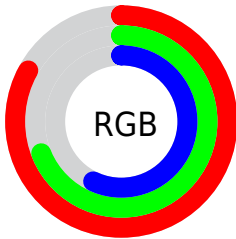
Format	Color
R_{YB}	212, 199, 145
Decimal	13938577
CIE _{Lab}	74.00, 9.12, 20.43
CIE _{LCh}	74, 22.371, 65.948
Yxy	46.7013, 0.3730, 0.3660
Android (android.graphics.Color)	4292128657 (0xFFD4AF91)
YUV	182.6430, -18.5580, 25.7461
Hunter-Lab	68.3383, 4.7189, 18.9512

Details

The XYZ color **47.5922, 46.7013, 33.2939** is a light color, and the websafe version is hex **CC9966**. A complement of this color would be **40.2882, 44.2278, 68.7010**, and the grayscale version is **44.9014, 47.2398, 51.4441**.

A 20% lighter version of the original color is **80.1247, 82.5353, 65.7407**, and **22.8136, 22.0420, 13.6418** is the 20% darker color. If you saturate the color by 10%, you get **43.9274, 41.7481, 24.7459**, and if you desaturate by 10%, it is **51.7621, 52.1760, 43.5162**.

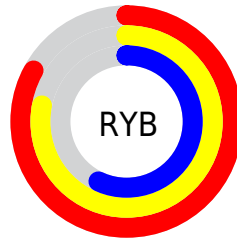
Distribution



Red (83%)

Green (69%)

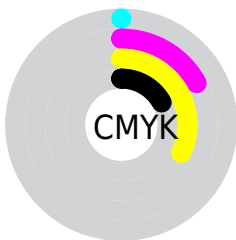
Blue (57%)



Red (83%)

Yellow (78%)

Blue (57%)

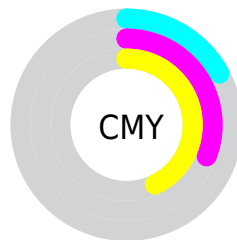


Cyan (0%)

Magenta (17%)

Yellow (32%)

Black (17%)



Cyan (17%)


Magenta (31%)


Yellow (43%)

Brightness & Saturation Gradients


These gradients show how the XYZ color 47.5922, 46.7013, 33.2939 changes by changing the brightness by 10 percent. The first figure shows a shift by +10% for each color and the second figure -10%.


Similar to the brightness gradients but the following saturation gradients show a change of the XYZ color 47.5922, 46.7013, 33.2939 by changing the saturation by 10% instead.


 47.5922, 46.7013,
33.2939


 47.5922, 46.7013,
33.2939


367.7830,
373.6210, 331.6445

 33.7140, 32.7996,
22.0787


 85.8103, 85.2676,
65.9554

 22.8358, 21.9730,
13.7159


 110.8809,
110.7009, 88.2388

 14.5923, 13.8370,
7.7868


140.4129,
140.7470, 115.0487

 8.6182, 8.0074,
3.8730

174.7718,
175.7901, 146.8036

 4.5481, 4.0997,
1.5560

214.3229,
216.2146, 183.9221

 2.0167, 1.7295,
0.2591

259.4316,

 0.6433, 0.4426,

262.4050, 226.8228

0.0000

310.4631,
314.7457, 275.9240

■ 0.0000, 0.0000,
0.0000

■ 47.5922, 46.7013,
33.2939

■ 47.5922, 46.7013,
33.2939

■ 43.9274, 41.7481,
24.7459

■ 51.7621, 52.1760,
43.5162

■ 40.7420, 37.2930,
17.7782

■ 56.4538, 58.1815,
55.4941

■ 38.0133, 33.3204,
12.2917

■ 61.6879, 64.7351,
69.3071

■ 35.7152, 29.8110,
8.1746

■ 67.4826, 71.8512,
85.0288

■ 33.8180, 26.7441,
5.2993

■ 73.8551, 79.5439,
102.7290

■ 32.2871, 24.0962,
3.5131

■ 77.9271, 86.6684,
107.2292

■ 31.2382, 22.1706,
2.6329

■ 80.9615, 92.7371,
108.2407

Harmonies

Analogous

The Analogous color harmony consists of three colors that are next to each other on the color wheel.



50.8999, 46.7013, 39.0003



47.5922, 46.7013, 33.2939



43.5971, 46.7013, 31.9615

Triad

The Triadic color harmony groups three colors that are evenly spaced from another and form a triangle on the color wheel.



47.5922, 46.7013, 33.2939



37.1798, 46.7013, 53.1632



49.0508, 46.7013, 70.8135

Complementary

The Complementary color scheme is a pair of colors which are on the opposite of each other on the color wheel.



47.5922, 46.7013, 33.2939



40.2882, 44.2278, 68.7010

Split Complementary

Split-complementary colors differ from the complementary color scheme. The scheme consists of three colors, the original color and two neighbors of the complement color.



45.1888, 46.7013, 76.0117



47.5922, 46.7013, 33.2939



38.4570, 46.7013, 64.8848

Square

The Square scheme is like the rectangle color scheme, but the four colors are evenly spaced on the color wheel.



47.5922, 46.7013, 33.2939



37.7383, 46.7013, 42.4024



41.3313, 46.7013, 73.6940



51.7767, 46.7013, 60.3505

Rectangle

The Rectangle color scheme consists of four colors that form a rectangle on the color wheel.



47.5922, 46.7013, 33.2939



41.1120, 46.7013, 33.5264



41.3313, 46.7013, 73.6940



47.8339, 46.7013, 73.3007

Sweetspot

The Sweet Spot groups the original color and five complimentary colors.



47.5934, 46.7035, 33.2949



87.6623, 90.7885, 89.2848



45.8209, 37.6659, 49.6372



18.5216, 19.1278, 18.4792



0.0000, 0.0000, 0.0000



20.3446, 21.4041, 23.3091

Same Dimension

The Same Dimension uses a secret algorithm to generate beautiful new colors.



47.5934, 46.7035, 33.2949



68.4222, 65.7362, 41.4750



54.7048, 60.9262, 35.6653



12.8765, 13.3273, 13.0545



19.3817, 13.8807, 1.6577



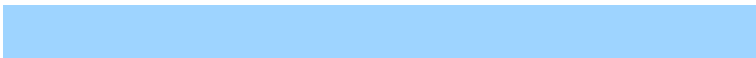
1.2509, 1.0010, 0.1273

Inverse Universe

The Inverse Universe completely reimagines the original color for something new.



40.2882, 44.2278, 68.7010



55.6153, 61.3893, 103.5258



34.3826, 32.4166, 66.7324



12.3054, 13.1342, 15.8241



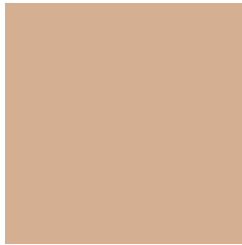
11.3693, 11.0004, 39.9772



0.7678, 0.8277, 2.4386

Previews

White Background



This preview shows how the XYZ color 47.5922, 46.7013, 33.2939 looks on a white background.

Color Contrast Check

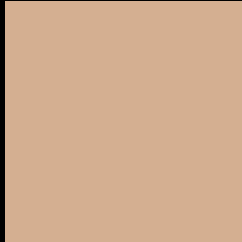
Large Text (above 18pt) WCAG AA × Fail

Any Text WCAG AA × Fail

Large Text (above 18pt) WCAG AAA × Fail

Any Text WCAG AAA × Fail

Black Background



This preview shows how the XYZ color 47.5922, 46.7013, 33.2939 looks on a black background.

Color Contrast Check

Large Text (above 18pt) WCAG AA ✓ Pass

Any Text WCAG AA ✓ Pass

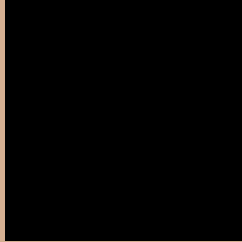
Large Text (above 18pt) WCAG AAA ✓ Pass

Any Text WCAG AAA ✓ Pass

If you want to check with other color combinations, try the [Color Contrast Checker](#).

XYZ 47.5922, 46.7013, 33.2939

Background



This preview shows how black text looks on a background with the XYZ color 47.5922, 46.7013, 33.2939.



This preview shows how white text looks on a background with the XYZ color 47.5922, 46.7013,

Color Blindness Simulation

Color vision deficiency is a very complex topic, and I could not describe the different causes any better than Wikipedia does, so if you want to learn more, you should check out their [article about color blindness](#).

Dichromacy



Original Color

47.5922, 46.7013, 33.2939

Protanopia

44.0656, 46.9315, 34.7531

Deuteranopia

47.5922, 46.7013, 33.2939



Tritanopia

51.2409, 46.7673, 51.1260

Trichromacy



Original Color

47.5922, 46.7013, 33.2939

Protanomaly

45.2060, 46.6261, 34.2209

Deuteranomaly

47.5922, 46.7013, 33.2939

Tritanomaly

49.9383, 46.8167, 43.9406

Monochromacy



Original Color

47.5922, 46.7013, 33.2939

Achromatopsia

45.0092, 47.3531, 51.5676

Achromatomaly

45.7308, 46.9764, 44.1932

CSS Examples

Text

The CSS property to change the color of the text to XYZ 47.5922, 46.7013, 33.2939 is called "color". The color property can be set on classes, ids or directly on the HTML element.

This example shows how text in the color `rgb(212, 175, 145)` looks like.

```
.text, #text, p{  
    color:rgb(212, 175, 145)  
}
```

If you want to add a text shadow in that color use the text-shadow property, you can generate a text shadow directly with our [CSS Text Shadow Generator](#).

Here you see how black text with a 4 pixel rgb(212, 175, 145) colored shadow looks like.

```
.shadow{ text-shadow: 4px 4px 2px rgb(212, 175, 145) }
```

Border

The CSS property to change the border of an element to XYZ 47.5922, 46.7013, 33.2939 is called "border". The border property can be set on classes, ids or directly on the HTML element.

This example shows the color as border, it can be applied via the CSS property "border" or "border-color".

```
.border, #border, table{ border:4px solid rgb(212, 175, 145) }
```


If only the border color should be changed use the property `border-color`.

```
.border{ border-color:rgb(212, 175, 145) }
```

If you want to add a box shadow in that color use:

Here you see how a box with a 4 pixel `rgb(212, 175, 145)` colored shadow looks like.

```
.boxshadow{ -moz-box-shadow:4px 4px 4px  
4px rgb(212, 175, 145); -webkit-box-  
shadow:4px 4px 4px 4px rgb(212, 175, 145);  
box-shadow:4px 4px 4px 4px rgb(212, 175,  
145) }
```

Background

The CSS property to change the background color of an element to XYZ 47.5922, 46.7013, 33.2939 is called "background". The background property can be set on classes, ids or directly on the HTML element.

```
.background, #background, body{  
background: rgb(212, 175, 145) }
```

If only the background color should be changed can be used:

```
.background{ background-color: rgb(212,  
175, 145) }
```

This example shows the color as background, it is applied via the CSS property "background".

To optimize and compress your CSS code, you can use our [online CSS compressor and optimizer](#) based on csstidy. If you want to create a linear or radial gradient as background or border, check our [CSS Gradient Generator](#).

Hey! You found this booklet interesting? Support Converting Colors with the new Membership Option!

The pro membership hides all ads, plus gives you double the colors in the color bucket, and more awesome pro features!

[Learn more, Memberships starting at \\$2.50/m!](#)

**Follow me
on Twitter!**

@ConvertingColor