

# Converting Colors

XYZ(47.6208, 45.3521, 44.0495)

Have a look what the booklet for  
XYZ(47.6208, 45.3521, 44.0495)  
contains.

<b>XYZ(47.5507, 45.2935, 44.2665)</b> .....	3
<b><i>Conversions</i></b> .....	4
<b><i>Details</i></b> .....	6
<b><i>Harmonies</i></b> .....	12
<b><i>Previews</i></b> .....	24
<b><i>Color Blindness Simulation</i></b> .....	28
<b><i>CSS Examples</i></b> .....	31

# Color

**XYZ(47.5507, 45.2935,  
44.2665)**

# Conversions

## Conversions Part 1

Format	Color
Hex	CFABAA
RGB	207, 171, 170
RGB Percent	81%, 67%, 67%
CMY	0.1882, 0.3294, 0.3333
CMYK	0.00, 0.17, 0.18, 0.19
HSL	2°, 28%, 74%
HSV	2°, 18%, 81%
XYZ	47.5507, 45.2935, 44.2665
YIQ	181.6500, 21.7770, 7.3210

# Conversions

## Conversions Part 2

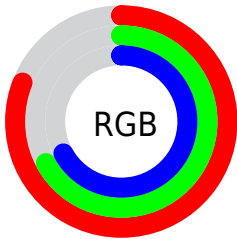
<b>Format</b>	<b>Color</b>
R <sub>YB</sub>	207, 171, 170
Decimal	13609898
CIE <sub>Lab</sub>	73.08, 12.94, 5.43
CIE <sub>LCh</sub>	73, 14.034, 22.775
Yxy	45.2935, 0.3468, 0.3303
Android (android.graphics.Color)	4291799978 (0xFFCFABAA)
YUV	181.6500, -5.7434, 22.2320
Hunter-Lab	67.3004, 8.3423, 8.1126

# Details

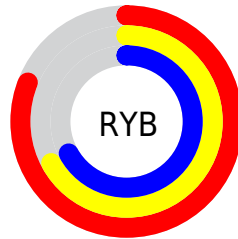
The XYZ color **47.5507, 45.2935, 44.2665** is a light color, and the websafe version is hex **CC9999**. A complement of this color would be **49.9108, 57.1921, 67.4404**, and the grayscale version is **44.2961, 46.6029, 50.7506**.

A 20% lighter version of the original color is **82.0270, 81.0890, 82.5626**, and **22.8157, 21.1771, 20.0246** is the 20% darker color. If you saturate the color by 10%, you get **42.2263, 37.5354, 33.5795**, and if you desaturate by 10%, it is **53.7655, 54.3381, 56.7726**.

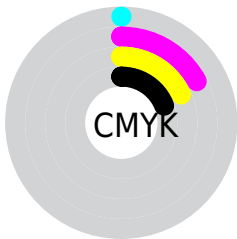
# Distribution



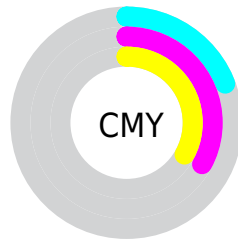
- Red (81%)
- Green (67%)
- Blue (67%)



- Red (81%)
- Yellow (67%)
- Blue (67%)



- Cyan (0%)
- Magenta (17%)
- Yellow (18%)
- Black (19%)




- Cyan (19%)
- Magenta (33%)
- Yellow (33%)


# Brightness & Saturation Gradients

These gradients show how the XYZ color 47.5507, 45.2935, 44.2665 changes by changing the brightness by 10 percent. The first figure shows a shift by +10% for each color and the second figure -10%.


Similar to the brightness gradients but the following saturation gradients show a change of the XYZ color 47.5507, 45.2935, 44.2665 by changing the saturation by 10% instead.





 47.5507, 45.2935,  
44.2665

 47.5507, 45.2935,  
44.2665


367.6207,  
367.9609, 379.8678

 33.6810, 31.6887,  
30.5413


 85.7488, 83.1607,  
82.9254

 22.8104, 21.1238,  
19.9943


110.8079,  
108.1918, 108.6961

 14.5735, 13.2145,  
12.2069


140.3275,  
137.8005, 139.3192

 8.6049, 7.5764,  
6.7605

174.6730,  
172.3711, 175.2131

 4.5394, 3.8251,  
3.2366

214.2097,  
212.2881, 216.7964

 2.0116, 1.5762,  
1.2167

259.3030,

 0.6405, 0.3415,

257.9358, 264.4876

0.0000

310.3182,  
309.6986, 318.7052

■ 0.0000, 0.0000,  
0.0000

■ 47.5507, 45.2935,  
44.2665

■ 47.5507, 45.2935,  
44.2665

■ 42.2263, 37.5354,  
33.5795

■ 53.7655, 54.3381,  
56.7726

■ 37.7481, 30.9996,  
24.6241

■ 60.9049, 64.7175,  
71.1738

■ 34.0736, 25.6257,  
17.3101

■ 69.0058, 76.4848,  
87.5454

■ 31.1552, 21.3456,  
11.5380

■ 78.1022, 89.6885,  
105.9579

■ 28.9403, 18.0844,  
7.1973

■ 79.5423, 92.0055,  
108.1742

■ 27.3696, 15.7574,  
4.1632

■ 26.3740, 14.2665,  
2.2891

■ 25.8638, 13.4900,  
1.3670

■ 25.7932, 13.3874,  
1.2246

# Harmonies

## Analogous

The Analogous color harmony consists of three colors that are next to each other on the color wheel.



47.9048, 45.2935, 51.0366



47.5507, 45.2935, 44.2665



45.9692, 45.2935, 39.3166

# Triad

The Triadic color harmony groups three colors that are evenly spaced from another and form a triangle on the color wheel.



47.5507, 45.2935, 44.2665



39.3998, 45.2935, 41.5827



42.4592, 45.2935, 63.9807

# Complementary

The Complementary color scheme is a pair of colors which are on the opposite of each other on the color wheel.



47.5507, 45.2935, 44.2665



49.9108, 57.1921, 67.4404

# Split Complementary

Split-complementary colors differ from the complementary color scheme. The scheme consists of three colors, the original color and two neighbors of the complement color.



40.2573, 45.2935, 60.8836



47.5507, 45.2935, 44.2665



38.5350, 45.2935, 47.6363

# Square

The Square scheme is like the rectangle color scheme, but the four colors are evenly spaced on the color wheel.



47.5507, 45.2935, 44.2665



41.2485, 45.2935, 37.8730



38.8429, 45.2935, 54.7376



44.9034, 45.2935, 62.8611



# Rectangle

The Rectangle color scheme consists of four colors that form a rectangle on the color wheel.



47.5507, 45.2935, 44.2665



44.4631, 45.2935, 37.4987



38.8429, 45.2935, 54.7376



41.6674, 45.2935, 63.3890

# Sweetspot

The Sweet Spot groups the original color and five complimentary colors.



47.5519, 45.2955, 44.2674



89.2344, 91.5455, 97.1683



51.2945, 46.4903, 64.9073



18.9315, 19.3497, 20.4587



0.0000, 0.0000, 0.0000



20.3446, 21.4041, 23.3091



# Same Dimension

The Same Dimension uses a secret algorithm to generate beautiful new colors.



47.5519, 45.2955, 44.2674



73.1687, 68.1644, 64.8369



51.2109, 52.6135, 45.4871



11.8341, 11.8589, 12.2773



16.2620, 8.4569, 0.7753



0.9185, 0.4913, 0.0464



# Inverse Universe

The Inverse Universe completely reimagines the original color for something new.



49.9108, 57.1921, 67.4404



77.5568, 90.2964, 107.9490



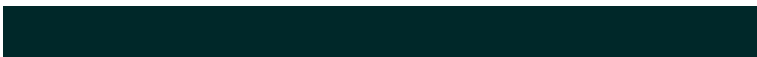
45.7988, 48.9682, 66.0697



12.1297, 13.3497, 15.1811



20.3236, 29.2939, 41.7756

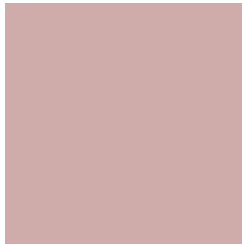


1.1452, 1.6557, 2.3388



# Previews

## White Background



This preview shows how the XYZ color 47.5507, 45.2935, 44.2665 looks on a white background.

## Color Contrast Check

Large Text (above 18pt) WCAG AA × Fail

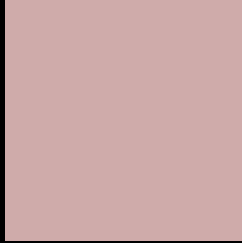
Any Text WCAG AA × Fail

Large Text (above 18pt) WCAG AAA × Fail

Any Text WCAG AAA × Fail



# Black Background



This preview shows how the XYZ color 47.5507, 45.2935, 44.2665 looks on a black background.

## Color Contrast Check

Large Text (above 18pt) WCAG AA ✓ Pass

Any Text WCAG AA ✓ Pass

Large Text (above 18pt) WCAG AAA ✓ Pass

Any Text WCAG AAA ✓ Pass

If you want to check with other color combinations, try the [Color Contrast Checker](#).

**XYZ 47.5507, 45.2935, 44.2665**

## **Background**



This preview shows how black text looks on a background with the XYZ color 47.5507, 45.2935, 44.2665.



This preview shows how white text looks on a background with the XYZ color 47.5507, 45.2935,



# Color Blindness Simulation

Color vision deficiency is a very complex topic, and I could not describe the different causes any better than Wikipedia does, so if you want to learn more, you should check out their [article about color blindness](#).

## Dichromacy



### Original Color

47.5507, 45.2935, 44.2665

### Protanopia

43.5272, 45.4865, 46.5300

### Deuteranopia

46.2867, 45.2069, 44.3164



## Tritanopia

48.9260, 45.3086, 50.4227

# Trichromacy



## Original Color

47.5507, 45.2935, 44.2665

## Protanomaly

44.8064, 45.2743, 45.9124

## Deuteranomaly

46.6368, 45.1038, 44.2781

## Tritanomaly

48.4230, 45.3737, 48.3253

# Monochromacy



## Original Color

47.5507, 45.2935, 44.2665

## Achromatopsia

44.4628, 46.7784, 50.9417

## Achromatomaly

45.4421, 46.1315, 48.6287

# CSS Examples

## Text

The CSS property to change the color of the text to XYZ 47.5507, 45.2935, 44.2665 is called "color". The color property can be set on classes, ids or directly on the HTML element.

This example shows how text in the color `rgb(207, 171, 170)` looks like.

```
.text, #text, p{  
    color:rgb(207, 171, 170)  
}
```

If you want to add a text shadow in that color use the text-shadow property, you can generate a text shadow directly with our [CSS Text Shadow Generator](#).

Here you see how black text with a 4 pixel rgb(207, 171, 170) colored shadow looks like.

```
.shadow{ text-shadow: 4px 4px 2px rgb(207, 171, 170) }
```

## Border

The CSS property to change the border of an element to XYZ 47.5507, 45.2935, 44.2665 is called "border". The border property can be set on classes, ids or directly on the HTML element.

This example shows the color as border, it can be applied via the CSS property "border" or "border-color".

```
.border, #border, table{ border:4px solid rgb(207, 171, 170) }
```



If only the border color should be changed use the property `border-color`.

```
.border{ border-color:rgb(207, 171, 170) }
```

If you want to add a box shadow in that color use:

Here you see how a box with a 4 pixel `rgb(207, 171, 170)` colored shadow looks like.

```
.boxshadow{ -moz-box-shadow:4px 4px 4px  
4px rgb(207, 171, 170); -webkit-box-  
shadow:4px 4px 4px 4px rgb(207, 171, 170);  
box-shadow:4px 4px 4px 4px rgb(207, 171,  
170) }
```

# Background

The CSS property to change the background color of an element to XYZ 47.5507, 45.2935, 44.2665 is called "background". The background property can be set on classes, ids or directly on the HTML element.

```
.background, #background, body{  
background: rgb(207, 171, 170) }
```

If only the background color should be changed can be used:

```
.background{ background-color: rgb(207,  
171, 170) }
```

This example shows the color as background, it is applied via the CSS property "background".

To optimize and compress your CSS code, you can use our [online CSS compressor and optimizer](#) based on csstidy. If you want to create a linear or radial gradient as background or border, check our [CSS Gradient Generator](#).

Hey! You found this booklet interesting? Support Converting Colors with the new Membership Option!

The pro membership hides all ads, plus gives you double the colors in the color bucket, and more awesome pro features!

**[Learn more, Memberships starting at \\$2.50/m!](#)**

**Follow me  
on Twitter!**

@ConvertingColor