

Converting Colors

XYZ(47.6379, 45.8714, 45.8824)

Have a look what the booklet for
XYZ(47.6379, 45.8714, 45.8824)
contains.

XYZ(47.6632, 45.8834, 45.8794)	3
<i>Conversions</i>	4
<i>Details</i>	6
<i>Harmonies</i>	12
<i>Previews</i>	24
<i>Color Blindness Simulation</i>	28
<i>CSS Examples</i>	31

Color

**XYZ(47.6632, 45.8834,
45.8794)**

Conversions

Conversions Part 1

Format	Color
Hex	CDADAD
RGB	205, 173, 173
RGB Percent	80%, 68%, 68%
CMY	0.1961, 0.3215, 0.3216
CMYK	0.00, 0.16, 0.16, 0.20
HSL	0°, 24%, 74%
HSV	0°, 16%, 80%
XYZ	47.6632, 45.8834, 45.8794
YIQ	182.5680, 19.0720, 6.7840

Conversions

Conversions Part 2

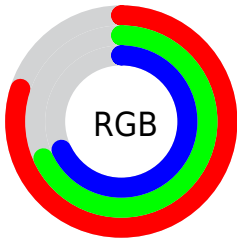
Format	Color
R_{YB}	205, 173, 173
Decimal	13479341
CIE Lab	73.47, 11.59, 4.32
CIE LCh	73, 12.371, 20.432
Yxy	45.8834, 0.3419, 0.3291
Android (android.graphics.Color)	4291669421 (0xFFCDADAD)
YUV	182.5680, -4.7170, 19.6729
Hunter-Lab	67.7373, 7.0609, 7.2582

Details

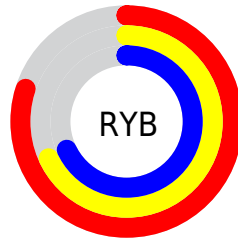
The XYZ color **47.6632, 45.8834, 45.8794** is a light color, and the websafe version is hex **CC9999**. A complement of this color would be **50.0839, 56.9533, 66.1113**, and the grayscale version is **44.7920, 47.1246, 51.3187**.

A 20% lighter version of the original color is **82.9870, 82.3482, 84.9197**, and **22.8662, 21.5393, 21.0415** is the 20% darker color. If you saturate the color by 10%, you get **42.1964, 37.8842, 35.0098**, and if you desaturate by 10%, it is **54.0399, 55.2144, 58.5550**.

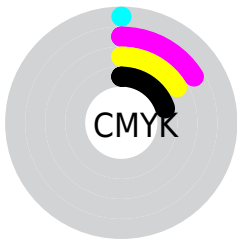
Distribution



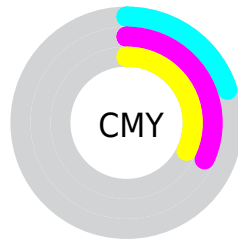
- Red (80%)
- Green (68%)
- Blue (68%)



- Red (80%)
- Yellow (68%)
- Blue (68%)



- Cyan (0%)
- Magenta (16%)
- Yellow (16%)
- Black (20%)





- Cyan (20%)
- Magenta (32%)
- Yellow (32%)

Brightness & Saturation Gradients


These gradients show how the XYZ color 47.6632, 45.8834, 45.8794 changes by changing the brightness by 10 percent. The first figure shows a shift by +10% for each color and the second figure -10%.


Similar to the brightness gradients but the following saturation gradients show a change of the XYZ color 47.6632, 45.8834, 45.8794 by changing the saturation by 10% instead.


 47.6632, 45.8834,
45.8794

 47.6632, 45.8834,
45.8794


368.0604,
370.3397, 386.5871

 33.7704, 32.1538,
31.8027


 85.9155, 84.0445,
85.3709

 22.8793, 21.4790,
20.9473


111.0056,
109.2447, 111.6227

 14.6246, 13.4746,
12.8946


140.5590,
139.0374, 142.7700

 8.6410, 7.7562,
7.2261

174.9408,
173.8068, 179.2312

 4.5630, 3.9393,
3.5233

214.5165,
213.9373, 221.4251

 2.0253, 1.6397,
1.3677

259.6514,

 0.6481, 0.3841,

259.8134, 269.7699

0.1163

310.7110,
311.8194, 324.6844

■ 0.0000, 0.0000,
0.0000

■ 47.6632, 45.8834,
45.8794

■ 47.6632, 45.8834,
45.8794

■ 42.1964, 37.8842,
35.0098

■ 54.0399, 55.2144,
58.5550

■ 37.5945, 31.1504,
25.8614

■ 61.3614, 65.9276,
73.1104

■ 33.8144, 25.6190,
18.3467

■ 69.6652, 78.0781,
89.6189

■ 30.8077, 21.2192,
12.3697

■ 78.9855, 91.7163,
108.1478

■ 28.5210, 17.8730,
7.8242

■ 78.9870, 91.7192,
108.1483

■ 26.8942, 15.4924,
4.5906

■ 25.8573, 13.9749,
2.5297

■ 25.3243, 13.1948,
1.4706

■ 25.1773, 12.9797,
1.1784

Harmonies

Analogous

The Analogous color harmony consists of three colors that are next to each other on the color wheel.



47.8818, 45.8834, 51.9838



47.6632, 45.8834, 45.8794



46.3393, 45.8834, 41.2543

Triad

The Triadic color harmony groups three colors that are evenly spaced from another and form a triangle on the color wheel.



47.6632, 45.8834, 45.8794



40.4548, 45.8834, 42.6871



42.9169, 45.8834, 62.7741

Complementary

The Complementary color scheme is a pair of colors which are on the opposite of each other on the color wheel.



47.6632, 45.8834, 45.8794



50.0839, 56.9533, 66.1113

Split Complementary

Split-complementary colors differ from the complementary color scheme. The scheme consists of three colors, the original color and two neighbors of the complement color.



40.9916, 45.8834, 59.8098



47.6632, 45.8834, 45.8794



39.6017, 45.8834, 47.9879

Square

The Square scheme is like the rectangle color scheme, but the four colors are evenly spaced on the color wheel.



47.6632, 45.8834, 45.8794



42.1619, 45.8834, 39.5207



39.7949, 45.8834, 54.2740



45.0925, 45.8834, 62.0907

Rectangle

The Rectangle color scheme consists of four colors that form a rectangle on the color wheel.



47.6632, 45.8834, 45.8794



45.0316, 45.8834, 39.4677



39.7949, 45.8834, 54.2740



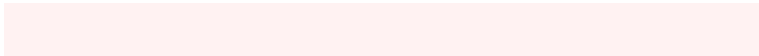
42.2202, 45.8834, 62.1625

Sweetspot

The Sweet Spot groups the original color and five complimentary colors.



47.6645, 45.8855, 45.8804



89.1316, 91.3399, 97.1340



51.1403, 47.2746, 64.1875



18.9067, 19.3000, 20.4504



0.0000, 0.0000, 0.0000



20.3446, 21.4041, 23.3091

Same Dimension

The Same Dimension uses a secret algorithm to generate beautiful new colors.



47.6645, 45.8855, 45.8804



74.6529, 70.1537, 68.3498



50.9177, 52.3920, 46.9648



11.2125, 11.2139, 11.6530



15.6737, 8.0804, 0.7336



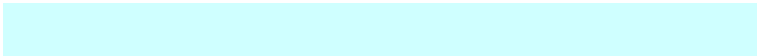
0.8086, 0.4169, 0.0379

Inverse Universe

The Inverse Universe completely reimagines the original color for something new.



50.0839, 56.9533, 66.1113



79.4147, 91.9370, 108.1678



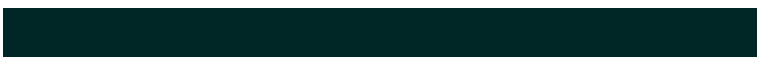
46.4511, 49.6878, 64.9004



11.5432, 12.7268, 14.4185



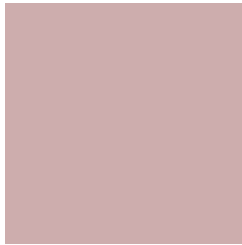
20.4472, 29.9185, 40.6534



1.0549, 1.5435, 2.0973

Previews

White Background



This preview shows how the XYZ color 47.6632, 45.8834, 45.8794 looks on a white background.

Color Contrast Check

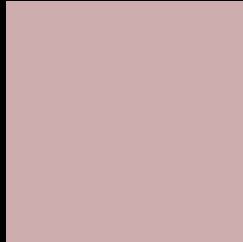
Large Text (above 18pt) WCAG AA × Fail

Any Text WCAG AA × Fail

Large Text (above 18pt) WCAG AAA × Fail

Any Text WCAG AAA × Fail

Black Background



This preview shows how the XYZ color 47.6632, 45.8834, 45.8794 looks on a black background.

Color Contrast Check

Large Text (above 18pt) WCAG AA ✓ Pass

Any Text WCAG AA ✓ Pass

Large Text (above 18pt) WCAG AAA ✓ Pass

Any Text WCAG AAA ✓ Pass

If you want to check with other color combinations, try the [Color Contrast Checker](#).

XYZ 47.6632, 45.8834, 45.8794

Background



This preview shows how black text looks on a background with the XYZ color 47.6632, 45.8834, 45.8794.



This preview shows how white text looks on a background with the XYZ color 47.6632, 45.8834,

45.8794.

Color Blindness Simulation

Color vision deficiency is a very complex topic, and I could not describe the different causes any better than Wikipedia does, so if you want to learn more, you should check out their [article about color blindness](#).

Dichromacy



Original Color

47.6632, 45.8834, 45.8794

Protanopia

44.2647, 46.1311, 48.1662

Deuteranopia

46.9602, 46.0946, 45.9572



Tritanopia

48.7735, 45.7504, 52.1590

Trichromacy



Original Color

47.6632, 45.8834, 45.8794

Protanomaly

45.2968, 45.7853, 47.5243

Deuteranomaly

47.0360, 45.8458, 45.9052

Tritanomaly

48.5466, 45.9631, 50.0291

Monochromacy



Original Color

47.6632, 45.8834, 45.8794

Achromatopsia

45.0092, 47.3531, 51.5676

Achromatomaly

45.7426, 46.5712, 49.2261

CSS Examples

Text

The CSS property to change the color of the text to XYZ 47.6632, 45.8834, 45.8794 is called "color". The color property can be set on classes, ids or directly on the HTML element.

This example shows how text in the color `rgb(205, 173, 173)` looks like.

```
.text, #text, p{  
    color:rgb(205, 173, 173)  
}
```

If you want to add a text shadow in that color use the text-shadow property, you can generate a text shadow directly with our [CSS Text Shadow Generator](#).

Here you see how black text with a 4 pixel rgb(205, 173, 173) colored shadow looks like.

```
.shadow{ text-shadow: 4px 4px 2px rgb(205, 173, 173) }
```

Border

The CSS property to change the border of an element to XYZ 47.6632, 45.8834, 45.8794 is called "border". The border property can be set on classes, ids or directly on the HTML element.

This example shows the color as border, it can be applied via the CSS property "border" or "border-color".

```
.border, #border, table{ border:4px solid rgb(205, 173, 173) }
```


If only the border color should be changed use the property `border-color`.

```
.border{ border-color:rgb(205, 173, 173) }
```

If you want to add a box shadow in that color use:

Here you see how a box with a 4 pixel `rgb(205, 173, 173)` colored shadow looks like.

```
.boxshadow{ -moz-box-shadow:4px 4px 4px  
4px rgb(205, 173, 173); -webkit-box-  
shadow:4px 4px 4px 4px rgb(205, 173, 173);  
box-shadow:4px 4px 4px 4px rgb(205, 173,  
173) }
```

Background

The CSS property to change the background color of an element to XYZ 47.6632, 45.8834, 45.8794 is called "background". The background property can be set on classes, ids or directly on the HTML element.

```
.background, #background, body{  
background: rgb(205, 173, 173) }
```

If only the background color should be changed can be used:

```
.background{ background-color: rgb(205,  
173, 173) }
```

This example shows the color as background, it is applied via the CSS property "background".

To optimize and compress your CSS code, you can use our [online CSS compressor and optimizer](#) based on csstidy. If you want to create a linear or radial gradient as background or border, check our [CSS Gradient Generator](#).

Hey! You found this booklet interesting? Support Converting Colors with the new Membership Option!

The pro membership hides all ads, plus gives you double the colors in the color bucket, and more awesome pro features!

[Learn more, Memberships starting at \\$2.50/m!](#)

**Follow me
on Twitter!**

@ConvertingColor