

Converting Colors

XYZ(47.7563, 45.4285, 46.8634)

Have a look what the booklet for
XYZ(47.7563, 45.4285, 46.8634)
contains.

XYZ(47.7544, 45.3428, 46.7925)	3
<i>Conversions</i>	4
<i>Details</i>	6
<i>Harmonies</i>	12
<i>Previews</i>	24
<i>Color Blindness Simulation</i>	28
<i>CSS Examples</i>	31

Color

**XYZ(47.7544, 45.3428,
46.7925)**

Conversions

Conversions Part 1

Format	Color
Hex	CEABAF
RGB	206, 171, 175
RGB Percent	81%, 67%, 69%
CMY	0.1922, 0.3294, 0.3137
CMYK	0.00, 0.17, 0.15, 0.19
HSL	353°, 26%, 74%
HSV	353°, 17%, 81%
XYZ	47.7544, 45.3428, 46.7925
YIQ	181.9210, 19.5760, 8.6640

Conversions

Conversions Part 2

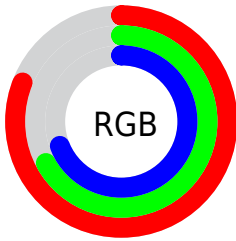
Format	Color
R _Y B	206, 171, 175
Decimal	13544367
CIE Lab	73.12, 13.37, 2.72
CIE LCh	73, 13.641, 11.512
Yxy	45.3428, 0.3414, 0.3241
Android (android.graphics.Color)	4291734447 (0xFFCEABAF)
YUV	181.9210, -3.4121, 21.1173
Hunter-Lab	67.3371, 8.7496, 5.9353

Details

The XYZ color **47.7544, 45.3428, 46.7925** is a light color, and the websafe version is hex **CC9999**. A complement of this color would be **49.5284, 57.0660, 64.2845**, and the grayscale version is **44.4320, 46.7459, 50.9063**.

A 20% lighter version of the original color is **82.7193, 81.3659, 86.2083**, and **22.9345, 21.2030, 21.6227** is the 20% darker color. If you saturate the color by 10%, you get **42.4897, 37.4900, 36.7848**, and if you desaturate by 10%, it is **53.8703, 54.5094, 58.2799**.

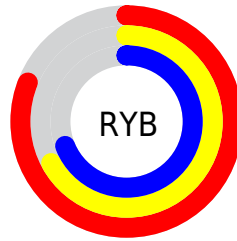
Distribution



Red (81%)

Green (67%)

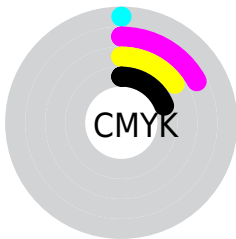
Blue (69%)



Red (81%)

Yellow (67%)

Blue (69%)

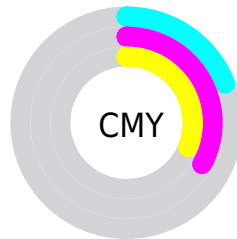


Cyan (0%)

Magenta (17%)

Yellow (15%)

Black (19%)



Cyan (19%)

Magenta (33%)

Yellow (31%)

Brightness & Saturation Gradients

These gradients show how the XYZ color 47.7544, 45.3428, 46.7925 changes by changing the brightness by 10 percent. The first figure shows a shift by +10% for each color and the second figure -10%.

Similar to the brightness gradients but the following saturation gradients show a change of the XYZ color 47.7544, 45.3428, 46.7925 by changing the saturation by 10% instead.

■ 47.7544, 45.3428,
46.7925

■ 47.7544, 45.3428,
46.7925

368.4166,
368.1601, 390.3554

■ 33.8429, 31.7275,
32.5185

■ 86.0505, 83.2346,
86.7505

■ 22.9352, 21.1535,
21.4897

111.1658,
108.2799, 113.2716

■ 14.6661, 13.2362,
13.2877

140.7465,
137.9040, 144.7122

■ 8.6702, 7.5914,
7.4939

175.1577,
172.4912, 181.4907

■ 4.5821, 3.8346,
3.6898

214.7650,
212.4261, 224.0258

■ 2.0364, 1.5815,
1.4567

259.9337,

■ 0.6543, 0.3451,

258.0929, 272.7359

0.1854

311.0291,
309.8762, 328.0396

■ 0.0000, 0.0000,
0.0000

■ 47.7544, 45.3428,
46.7925

■ 47.7544, 45.3428,
46.7925

■ 42.4897, 37.4900,
36.7848

■ 53.8703, 54.5094,
58.2799

■ 38.0347, 30.8850,
28.1938

■ 60.8689, 65.0397,
71.3008

■ 34.3502, 25.4653,
20.9563

■ 68.7847, 76.9884,
85.9099

■ 31.3922, 21.1606,
15.0028

■ 77.6493, 90.4055,
102.1582

■ 29.1122, 17.8931,
10.2581

■ 79.2638, 91.8619,
108.1612

■ 27.4557, 15.5751,
6.6387

■ 26.3598, 14.1043,
4.0507

■ 25.7432, 13.3454,
2.3827

■ 25.6138, 13.1859,
2.0335

Harmonies

Analogous

The Analogous color harmony consists of three colors that are next to each other on the color wheel.



47.5997, 45.3428, 53.6588



47.7544, 45.3428, 46.7925



46.6273, 45.3428, 41.1582

Triad

The Triadic color harmony groups three colors that are evenly spaced from another and form a triangle on the color wheel.



47.7544, 45.3428, 46.7925



40.1249, 45.3428, 40.1642



41.6574, 45.3428, 62.9210

Complementary

The Complementary color scheme is a pair of colors which are on the opposite of each other on the color wheel.



47.7544, 45.3428, 46.7925



49.5284, 57.0660, 64.2845

Split Complementary

Split-complementary colors differ from the complementary color scheme. The scheme consists of three colors, the original color and two neighbors of the complement color.



39.7495, 45.3428, 58.6087



47.7544, 45.3428, 46.7925



38.8875, 45.3428, 45.3171

Square

The Square scheme is like the rectangle color scheme, but the four colors are evenly spaced on the color wheel.



47.7544, 45.3428, 46.7925



42.1871, 45.3428, 37.5741



38.7527, 45.3428, 52.0417



44.0198, 45.3428, 63.4090

Rectangle

The Rectangle color scheme consists of four colors that form a rectangle on the color wheel.



47.7544, 45.3428, 46.7925



45.3243, 45.3428, 38.6916



38.7527, 45.3428, 52.0417



40.9439, 45.3428, 61.8532

Sweetspot

The Sweet Spot groups the original color and five complimentary colors.



47.7557, 45.3448, 46.7935



89.3511, 91.4270, 98.2919



50.0395, 46.1291, 64.6595



18.9598, 19.3211, 20.7305



0.0000, 0.0000, 0.0000



20.3446, 21.4041, 23.3091

Same Dimension

The Same Dimension uses a secret algorithm to generate beautiful new colors.



47.7557, 45.3448, 46.7935



74.4438, 69.0901, 70.2697



50.0329, 50.5182, 45.6446



11.2636, 11.2342, 11.9225



15.7904, 8.1268, 1.3492



0.8325, 0.4264, 0.1638

Inverse Universe

The Inverse Universe completely reimagines the original color for something new.



47.7557, 45.3448, 46.7935



74.4438, 69.0901, 70.2697



46.9149, 51.0718, 65.7782



11.2636, 11.2342, 11.9225



15.7904, 8.1268, 1.3492



0.8325, 0.4264, 0.1638

Previews

White Background



This preview shows how the XYZ color 47.7544, 45.3428, 46.7925 looks on a white background.

Color Contrast Check

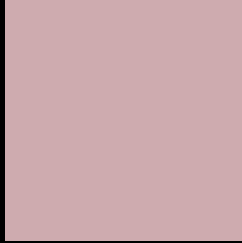
Large Text (above 18pt) WCAG AA × Fail

Any Text WCAG AA × Fail

Large Text (above 18pt) WCAG AAA × Fail

Any Text WCAG AAA × Fail

Black Background



This preview shows how the XYZ color 47.7544, 45.3428, 46.7925 looks on a black background.

Color Contrast Check

Large Text (above 18pt) WCAG AA ✓ Pass

Any Text WCAG AA ✓ Pass

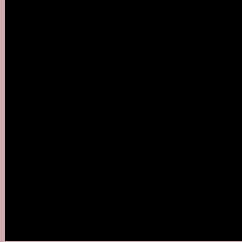
Large Text (above 18pt) WCAG AAA ✓ Pass

Any Text WCAG AAA ✓ Pass

If you want to check with other color combinations, try the [Color Contrast Checker](#).

XYZ 47.7544, 45.3428, 46.7925

Background



This preview shows how black text looks on a background with the XYZ color 47.7544, 45.3428, 46.7925.



This preview shows how white text looks on a background with the XYZ color 47.7544, 45.3428,

46.7925.

Color Blindness Simulation

Color vision deficiency is a very complex topic, and I could not describe the different causes any better than Wikipedia does, so if you want to learn more, you should check out their [article about color blindness](#).

Dichromacy



Original Color

47.7544, 45.3428, 46.7925

Protanopia

43.7852, 45.5622, 49.1345

Deuteranopia

46.3292, 45.4702, 46.3792



Tritanopia

48.6541, 45.4337, 51.0050

Trichromacy



Original Color

47.7544, 45.3428, 46.7925

Protanomaly

45.0471, 45.3414, 48.4970

Deuteranomaly

46.9407, 45.4997, 46.3527

Tritanomaly

48.3451, 45.3101, 49.3777

Monochromacy



Original Color

47.7544, 45.3428, 46.7925

Achromatopsia

44.4628, 46.7784, 50.9417

Achromatomaly

45.5429, 46.1718, 49.1595

CSS Examples

Text

The CSS property to change the color of the text to XYZ 47.7544, 45.3428, 46.7925 is called "color". The color property can be set on classes, ids or directly on the HTML element.

This example shows how text in the color `rgb(206, 171, 175)` looks like.

```
.text, #text, p{  
    color:rgb(206, 171, 175)  
}
```

If you want to add a text shadow in that color use the text-shadow property, you can generate a text shadow directly with our [CSS Text Shadow Generator](#).

Here you see how black text with a 4 pixel rgb(206, 171, 175) colored shadow looks like.

```
.shadow{ text-shadow: 4px 4px 2px rgb(206, 171, 175) }
```

Border

The CSS property to change the border of an element to XYZ 47.7544, 45.3428, 46.7925 is called "border". The border property can be set on classes, ids or directly on the HTML element.

This example shows the color as border, it can be applied via the CSS property "border" or "border-color".

```
.border, #border, table{ border:4px solid rgb(206, 171, 175) }
```


If only the border color should be changed use the property `border-color`.

```
.border{ border-color:rgb(206, 171, 175) }
```

If you want to add a box shadow in that color use:

Here you see how a box with a 4 pixel `rgb(206, 171, 175)` colored shadow looks like.

```
.boxshadow{ -moz-box-shadow:4px 4px 4px  
4px rgb(206, 171, 175); -webkit-box-  
shadow:4px 4px 4px 4px rgb(206, 171, 175);  
box-shadow:4px 4px 4px 4px rgb(206, 171,  
175) }
```

Background

The CSS property to change the background color of an element to XYZ 47.7544, 45.3428, 46.7925 is called "background". The background property can be set on classes, ids or directly on the HTML element.

```
.background, #background, body{  
background: rgb(206, 171, 175) }
```

If only the background color should be changed can be used:

```
.background{ background-color: rgb(206,  
171, 175) }
```

This example shows the color as background, it is applied via the CSS property "background".

To optimize and compress your CSS code, you can use our [online CSS compressor and optimizer](#) based on csstidy. If you want to create a linear or radial gradient as background or border, check our [CSS Gradient Generator](#).

Hey! You found this booklet interesting? Support Converting Colors with the new Membership Option!

The pro membership hides all ads, plus gives you double the colors in the color bucket, and more awesome pro features!

[Learn more, Memberships starting at \\$2.50/m!](#)

**Follow me
on Twitter!**

@ConvertingColor